

Euro  
Yarns

# महाराष्ट्र शैली रुईबुद लॉट्ट शेवळी



# महाराष्ट्र शिल्प रोडेबुद लॅट्टे शिवाळी



## Instructions

### SPECIAL STITCHES:

Provisional cast on: with waste yarn, crochet a chain of three, pick up and knit into each chain. Chain will be removed later to reveal live stitches into which you will knit.

i-cord cast on: \*knit 2, kfb, place stitch knitted through back loop onto left hand needle, slip 3 back to left hand needle\* repeat from \* - \*. Each back loop accumulates on left hand needle for cast on.

### SET UP (Chart 1)

Provisional cast on 3

i-cord cast on 8

(After slipping last three back, work Row 1 placing markers where indicated:

**Row 1:** k3 (border sts)k2, pm, k2. pm, k2, pm , k2 pm.  
sl3wyf (border sts) [14 sts]

**Row 2:** k3, k1 O2O k2 O2O k1 sl3wyf [18 sts]

**Row 3:** (and every odd row) k to last 3 sts, sl3wyf

**Row 4:** k3, k2 O2O k1 O2O k1 O2O k2, sl3wyf [24 sts]

**Row 6:** k3, k3 O2O k3 O2O k3 O2O k3, sl3wyf [30 sts]

**Row 8:** k3, k4 O2O k5 O2O k5 O2O k4, sl3wyf [36 sts]

**Row 10:** k3, k5 O2O k7 O2O k7 O2O k5, sl3wyf [42 sts]

**Row 12:** k3, k6 O2O k9 O2O k9 O2O k6, sl3wyf [48 sts]

**Row 14:** k3, k7 O2O k11 O2O k11 O2O k7, sl3wyf [54 sts]

**Row 16:** k3, k8 O2O k13 O2O k13 O2O k8, sl3wyf [60 sts]

### Materials

100g of Maharashtra Silk yarn  
by Euro Yarns (shade #7  
shown)

US 5 circular needle (or size  
needed to obtain gauge)

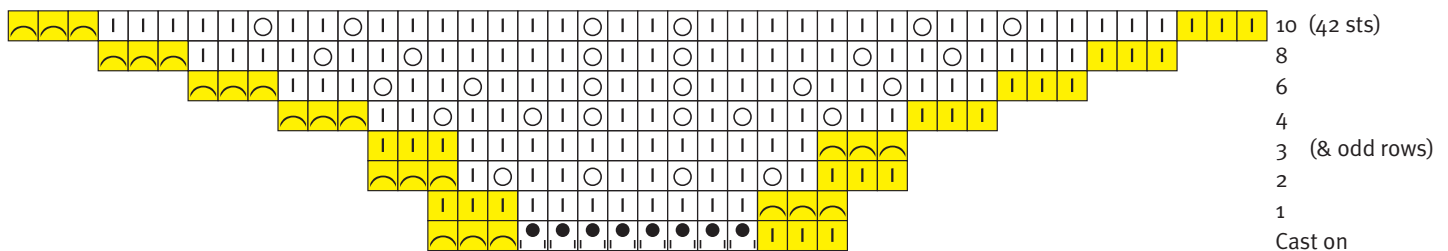
### Gauge

Approx. 24 sts per 4"/10 cm in garter  
stitch.

### Credits & Acknowledgements

garment design & photography  
by Nancy Nagle of Nangellini Designs

### Chart 1: Set Up



**Continue in this established fashion and at 84 sts and while maintaining i-cord edging and increases at stitch markers, begin Net Lace Section.**



# महाराष्ट्र और राज्याचे लॅस इहाजी

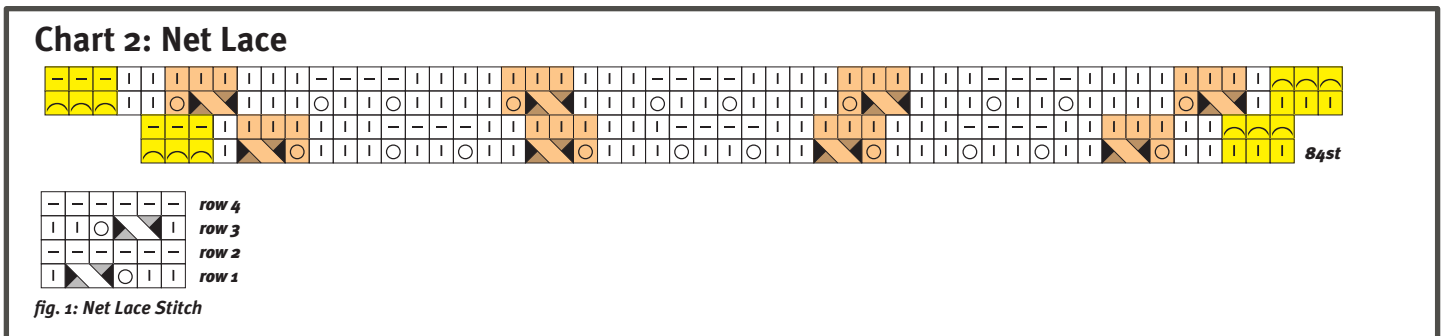
## NET LACE SECTION (Chart 2)

Work through lace chart 4 times, increasing repeats as needed and maintaining i-cord edging and increases at markers.

- Row 1:** k3 (edging) k2 \*yo sk2p\* repeat \* -\* to last 3 sts before marker, k2 yo k1 sm (K1 yo k3 \*yo sk2p\* k2 yo k1) \* twice, sm k1 yo k3 \*yo sk2p\* k1 s3wyf
- Row 2:** k3 (edging) p13 k2 sm k2 p23 k2 sm k2 p23 k2 sm k2 p13 s3wyf
- Row 3:** k3 (edging) k1 \*sk2p yo\* k4 yo k1 sm (k1 yo k3 \*sk2p yo\* k4 yo k1 sm) twice, k1 yo k3\* sk2p yo\* k2 sl3wyf
- Row 4:** k3(edging) p14 k2 sm k2 p25 k2 sm k2 p25 k2 sm k2 p14 sl3wyf
- Row 5:** k3(edging), k2 \*yo sk2pss0\* k4yo k1 sm ( k1 yo k5 \*yo sk2p\* k4 yo k1 sm) twice k1 yo k5 \*yo sk2p\* k1 s3wyf
- Row 6:** k3(edging) p15 k2 sm k2 p27 k2 sm k2 p27 k2 sm k2 p15 s3wyf
- Row 7:** k3(edging) k1 \*sk2p yo\*(4x) k3 yo k1 sm (k1 yo k2 \* sk2p yo\* (8x) k3 yo k1 sm) twice, k yo k2\* sk2p yo\*(4x) k2 sl3wyf
- Row 8:** k3(edging) p16 k2 sm k2 p29 sm k2 p29 k2 sm k2 p16 sl3wyf
- Row 9:** k3(edging), k2 \*yo sk2p \* repeat \* -\* to last 4 sts before marker, k3yo k1 sm ( kok4 \*yo sk2p\* k3ok sm) twice sm kok4\* yo sk2p\* k1 s3wyf
- Row 10:** k3(edging) p17 k2 sm k2 p31 k2 sm k2 p31 k2 sm k2 p17 s3wyf
- Row 11:** k3(edging) k1 \*sk2p yo\*(5x) k2 yo k1 sm (k1 yo k1 \* sk2p yo\* (10x) k2 yo k1 sm) twice, k yo k1\* sk2p yo\* (5x) k2 sl3wyf
- Row 12:** k3(edging) p18 k2 sm k2 p33 sm k2 p33 k2 sm k2 p18 sl3wyf
- Row 13:** k3(edging) k2 \*yo sk2p \* repeat \* -\* to last 3 sts before marker, k2 yo k1 sm ( k1 yo k3 \*yo sk2p\* k2 yo k1 sm) twice sm k1 yo k3\* yo sk2p\* k1 s3wyf
- Row 14:** k3(edging) p19 k2 sm k2 p35 k2 sm k2 p35 k2 sm k2 p19 s3wyf
- Row 15:** k3(edging) k1 \*sk2p yo\*(5x) k4 yo k1 sm (k1 yo k3 \* sk2p yo\* (10x) k4 yo k sm) twice, k yo k3\* sk2p yo\* (5x) k2 sl3wyf
- Row 16:** k3(edging) p20 k2 sm k2 p37 k2 sm k2 p37 k2 sm k2 p20 sl3wyf. Work 8 rows in garter stitch, maintaining k3(edging) at beginning of each row, k1, yo, sm, k1, yo at each marker, and sl3wyf at every end of row.

### Special Increase Row:

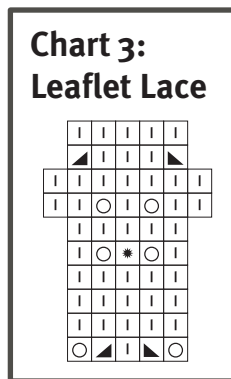
k28, yo, k1, sm, k1, yo, k12, m1, k11, m1, k12, m1, k12, yo, k1, sm, k1, yo, k12, m1, k12, m1, k11, m1, k12, yo, k1, sm, k1, yo, k25, sl3wyf [168 sts]



## LEAFLET LACE SECTION (Chart 3)

While maintaining k3(edging) at beginning of each row, k1, yo, k1 sm, k1, yo k1 at each marker, and sl3wyf at every end of row work second lace section 5x, 10x, 10x, 5x. When one repeat (10 rows) of lace is complete, you will begin again with 6x, 12x, 12x, 6x. Place markers of another color at the start and end of each lace section for each of the four segments of your shawl. This will help when it's time to add another repeat of the lace, and you will move the marker accordingly.

- Row 1: yo, ssk, k1, k2tog, yo
- Row 2: purl (k1, p1 in double yos)
- Row 3: knit even
- Row 4: purl
- Row 5: k1, yo, ddec, yo, k1
- Row 6: purl
- Row 7: k2, yo, k1, yo, k2
- Row 8: purl
- Row 9: ssk, k3, k2tog
- Row 10: purl



These 10 rows make up the lace pattern worked between the edging stitches and the spine stitches. After each repeat of these 10 rows, you will add one repeat to each side section and 2 repeats to each center section. Continue for 5 repeats; 50 rows.

Work 8 rows in garter stitch, maintaining k3(edging) at beginning of each row; yo, k1, sm, k1, yo at each marker, and sl3wyf at every end of row [336 sts plus 6 edge sts]

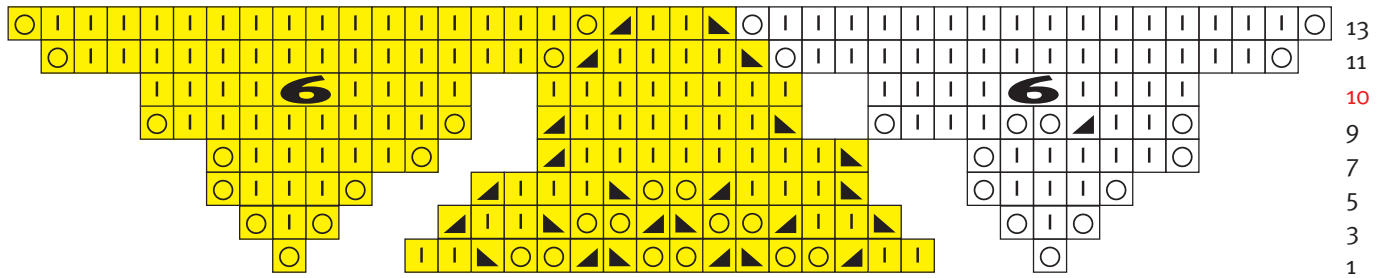
## LACE EDGE SECTION (Chart 4)

Work lace edge chart purling every even row and maintaining k3(edging) at beginning of each row and sl3wyf at every end of row. **Note: These edge stitches are not pictured in the chart.**

Repeat the yellow highlighted section 21 times across each row. **Hint: Remove old 'spine' markers as you come to them. You can place markers between repeats the first time through to maintain sections cleanly.** Also, remember to k1, p1 into double yarn-overs and pay special attention to row 10, which is the only even row depicted on the chart, here you will k, p, k, p, k, p in double yarn-over! Work one more purl row (row 14) after completing chart. Bind off on right side with Crochet Bind Off technique by gathering next three stitches together, pull yarn through all three stitches to sc, ch10 \*(gather next three stitches together, sc, ch10) 6x, gather next 4 stitches together, sc, ch10\* repeat to last section, gather next three stitches together sc, ch10) 6x, gather next 3 stitches, sc in last 3 stitches. **Note: The groups of 4 stitches will be the tops of the points, or , by keeping an eye on this, your bind off will be correct.**














# महाराष्ट्र और रोडबुट लॉट इहाजी

**Chart 4: Lace Edge**



Secure tail by pulling through last sc. Weave in securely. Alternatively, you may bind off with traditional bind off, but use a US 10 needle to obtain loose edge to ensure proper blocking and drape.

## Abbreviations

	icord cast on		Repeat these highlighted stitches as many times as needed
	or k Knit on front, purl on back		Edge stitches
	or k2tog Knit 2 stitches together through front loop		or ddec Slip 2 knit-wise, knit 1, pass 2 slipped stitches over together
	or p Purl on front, knit on back		or m6 Knit, purl, knit, purl, knit, purl all in the same space
	or slwyf Slip stitch with yarn in front	sm	Slip marker
	pm Place marker	m1	Lift bar between two stitches and knit through front loop
	or ssk Slip 1 knit-wise, slip 1 knit-wise; knit those two slipped stitches together	kfb	Knit into front and back of next stitch
st	Stitch	bo	Bind off
	or yo Yarn over	sl3wyf	Slip three stitches purl-wise with yarn held in front of work
	or sk2p Slip 1 knit-wise, k2, pass slipped stitch over both knit stitches	O2O	Yarn over, knit 2, yarn over

Revised 9/19/2013

