

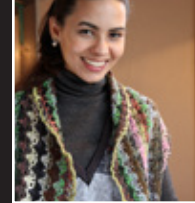
**NORO**

Kirara

# Crochet Jacket



# Crochet Jacket



Y-969

## Size

ONE SIZE To fit bust 34/38in (86/96cm)

## Finished Measurements

Width 20in/51cm (across back)  
Length 16in/41cm (center back)

## Materials

US 7 (4½mm) crochet hook  
190 gr (about 4 skeins) Noro Kirara shade #4

## Tension

Using US 7 crochet hook 17trs = 4in (10cm) square.

## Instructions

### FRONTS AND UPPER BACK

With 4.50mm crochet hook make 241ch and wk as follows:

Row 1: (RSF) 3ch, 1tr into 5th ch from hook, \* 3ch, skip 2ch, 1dc into next ch, 1ch, skip 1ch, 1dc into next ch, 3ch, skip 2ch, 1tr into next ch, 1ch, skip 1ch, 1tr into next ch, rep from \* ending 1tr into last ch, turn.

Row 2: 1ch, 1dc into first tr, 3ch, \* (1tr, 1ch, 1tr 1ch, 1tr) all into next 1 ch loop, 3ch, 1dc into next 1ch loop, 3ch, rep from \* ending 3ch, 1dc into top of 3ch, turn.

Row 3: 1ch, 1dc into first 2sts, \* 3ch, 1 tr into next 1ch loop, 1ch, 1tr into next 1ch loop, 3ch, 1dc into 3ch loop, 1ch, 1dc into next 3ch loop, rep from \* ending 1dc into last dc, turn.

Row 4: 4ch, 1tr into first dc, \* 3ch, 1dc into next 1ch loop, 3ch, (1tr 1ch, 1tr, 1ch, 1tr) all into next 1ch loop, rep from \* ending 3ch, (1tr, 1ch, 1tr) all into last dc, turn.

Row 5: 3ch, 1tr into 1ch loop, \* 3ch, 1dc into next 3ch loop, 1ch, 1dc into next 3ch loop, 3ch, 1tr into next 1ch loop. 1ch, 1tr into next 1ch loop, rep from \* ending 2tr into first 2ch of 4ch loop, turn.

Rep from row 2 until 28 rs in total have been worked.

NR: 1ch, 1dc into first st, \* [5ch., 1dc into 3ch loop] twice, 5ch, 1dc into center tr, rep from \* ending, 5ch, 1dc into top of 3ch, turn.

NR: \* 5ch, 1dc into 5ch loop, rep from \* ending 2ch, 1tr into last dc, turn.

NR: 1ch, 1dc into top of tr, \* 5ch, 1dc into 5ch loop, rep from \* ending 1dc into 3rd of 5ch. Fasten off.

### LOWER BACK

Turn work upside down.

Along row 1 of fronts and upper back piece, count in 65sts from both sides and place a colored marker.

RSF with 4.50mm crochet hook rejoin yarn at one colored marker and wk as follows:

Row 1: 1ch, 1dc into first st at marker, \* 3ch, skip 4ch, (1tr, 1ch, 1tr, 1ch, 1tr) all into next ch, 3ch, skip 4ch, 1dc into next ch, rep from \* ending with 3ch, 1dc into st at 2nd colored marker, turn.

Row 2: 1ch, 1dc into first dc, 1dc into 3ch loop, \* 3ch, 1tr into next 1ch loop, 1ch, 1tr into next 1ch loop, 3ch, 1dc into next 3ch loop, 1ch, 1dc into next 3ch loop, rep from \* ending 1dc into last dc, turn.

Row 3: 4ch, 1tr into base of 4ch, \* 3ch, 1dc into next 1ch loop, 3ch, (1tr, 1ch, 1tr, 1ch, 1tr) into next 1ch loop, rep from \* ending 3ch, (1tr, 1ch, 1tr) all into last dc, turn.

Row 4: 3ch, 1tr into 1ch loop, \* 3ch, 1dc into first 3ch loop, 1ch, 1dc into next 3ch loop, 3ch, 1tr into next 1ch loop. 1ch, 1tr into next 1ch loop, rep from \* ending 3ch, 1tr into first ch of 4ch loop, 1tr into next ch, turn.

Row 5: 1ch, 1dc into first tr, 3ch, \* (1tr, 1ch, 1tr 1ch, 1tr) all into next 1 ch loop, 3ch, 1dc into next 1ch loop, 3ch, rep from \* ending 3ch, 1dc into top of 3ch, turn. Rep from row 2 until a total of 36rs worked. Fasten off.

Join side seams by joining the last 16rs of lower back to the outer edges of upper back and front along the first row.

## TENSION

**VERY IMPORTANT:** Wk a tension square, if too small use a larger needle, if too large use a smaller needle. It is essential to work to correct tension to achieve finished measurements stated.

## ABBREVIATIONS (not all abbreviations apply to this pattern)

<b>K</b> = knit.	<b>NR</b> = next row.
<b>P</b> = purl.	<b> foll</b> = following.
<b>st(s)</b> = stitch(es).	<b>st.st.</b> = stocking stitch (RSF knit, WSF purl).
<b>rs</b> = rows.	<b>Rev.st.st.</b> = reverse stocking stitch (RSF purl, WSF knit).
<b>wk</b> = work.	<b> beg</b> = beginning.
<b>ins</b> = inches.	<b> alt</b> = alternate.
<b>dec</b> = decrease(ing).	<b> ch</b> = chain.
<b>inc</b> = increase(ing).	<b> dc</b> = double crochet.
<b>patt</b> = pattern.	<b> tr</b> = treble.
<b>rep</b> = repeat.	<b> yf</b> = yarn forward.
<b>tog</b> = together.	<b> sl 1</b> = slip one stitch.
<b>RSF/WSF</b> = right/wrong side facing.	<b> pssso</b> = pass slipped stitch over.
<b>rem</b> = remaining.	
<b>cont</b> = continue.	

**M1P** = make one stitch purlwise thus: pick up horizontal loop lying between last stitch worked and next stitch and purl into back of loop.

**M1K** = make one stitch thus: pick up horizontal loop lying between last stitch worked and next stitch and knit into back of loop.

**T3F** = slip next 2sts onto a cable needle and hold at front of work, purl next st from left hand needle then K2sts from cable needle.

**T3B** = Slip next stitch onto a cable needle and hold at back of work, knit next 2sts from left hand needle then Purl stitch from cable needle.

**C6F (C6B)** = slip next 3sts onto a cable needle and hold at front (back) of work, knit next 3sts from left hand needle then K3sts from cable needle.

**C4B** = slip next 2sts onto a cable needle and hold at back of work, knit next 2sts from left hand needle then K2sts from cable needle.

shade #26

