

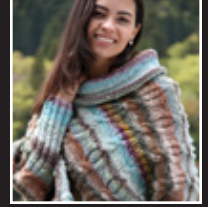
NORO

Obi

Cabled Sweater



Cabled Sweater



Y-959

Size

ONE SIZE To fit bust 34/38in (86/96cm)

Finished Measurements

Width 60in/152cm (underarm)
Length 19in/48cm (center back)
Sleeve Length 7½in/19cm

Materials

US 10½ (7mm) needles (x2)
US 10½ (7mm) circular needle
600 gr (about 6 skeins) Noro Obi shade #5

Tension

Measured over stocking stitch using US 10½ needles 14sts x 20rs = 4in (10cm) square.

TENSION

VERY IMPORTANT: Wk a tension square, if too small use a larger needle, if too large use a smaller needle. It is essential to work to correct tension to achieve finished measurements stated.

ABBREVIATIONS (not all abbreviations apply to this pattern)

K = knit.	NR = next row.
P = purl.	 foll = following.
st(s) = stitch(es).	st.st. = stocking stitch (RSF knit, WSF purl).
rs = rows.	Rev.st.st. = reverse stocking stitch (RSF purl, WSF knit).
wk = work.	 beg = beginning.
ins = inches.	 alt = alternate.
dec = decrease(ing).	 ch = chain.
inc = increase(ing).	 dc = double crochet.
patt = pattern.	 tr = treble.
rep = repeat.	 yf = yarn forward.
tog = together.	 sl 1 = slip one stitch.
RSF/WSF = right/wrong side facing.	 pssso = pass slipped stitch over.
rem = remaining.	
cont = continue.	

M1P = make one stitch purlwise thus: pick up horizontal loop lying between last stitch worked and next stitch and purl into back of loop.

M1K = make one stitch thus: pick up horizontal loop lying between last stitch worked and next stitch and knit into back of loop.

T3F = slip next 2sts onto a cable needle and hold at front of work, purl next st from left hand needle then K2sts from cable needle.

T3B = Slip next stitch onto a cable needle and hold at back of work, knit next 2sts from left hand needle then Purl stitch from cable needle.

C6F (C6B) = slip next 3sts onto a cable needle and hold at front (back) of work, knit next 3sts from left hand needle then K3sts from cable needle.

C4B = slip next 2sts onto a cable needle and hold at back of work, knit next 2sts from left hand needle then K2sts from cable needle.

Instructions

BACK

(worked in one piece)

Beg at right side seam.

With US 10½ needles cast on 81sts and wk as follows:

Row 1: (RSF) [P3, K2, P2, K2, P2, K2] 6 times, P3.

Row 2: K all K sts and P all P sts to end.

Row 3: As row 1.

Row 4: As row 2.

Row 5: As row 1.

Row 6: As row 2.

Row 7: [P3, T3F, P1, K2, P1, T3B] 6 times, P3.

Row 8: As row 2.

Row 9: P4, [T3F, K2, T3B, P5] 5 times, T3F, K2, T3B, P4.

Row 10: As row 2.

Row 11: P5, [C6B, P7] 5 times, C6B, P5.

Row 12: As row 2.

Row 13: P5, [K6, P7] 5 times, K6, P5.

Row 14: As row 2.

Rep the last 2 rs once more.

Row 17: As row 11.

Row 18: As row 2.

Row 19: P4, [T3B, K2, T3F, P5] 5 times, T3B, K2, T3F, P4.

Row 20: As row 2.

Row 21: P3, [T3B, P1, K2, P1, T3F, P3] 6 times.

Row 22: As row 2.

Rep patt from row 3 until 66rs in total worked.

Place a colored marker at the beg of the last row (indicates lower rib pick up)

Cont in patt for a further 20rs.

Place a colored marker at the end of the last row. (Indicates neck pick up)

Cont in patt for a further 32rs

Place a colored marker at the beg of the last row. (indicates sleeve pick up)

Cont in patt for a further 46rs.

Place a colored marker at the beg of the last row. (indicates sleeve pick up)

Cont in patt for a further 32 rs.

Place a colored marker at the end of the last row. (indicates neck pick up)

Cont in patt for a further 20 rs.

Place a colored marker at the beg of the last row. (indicates lower rib pick up)

Cont in patt for a further 66rs.

Cast off.

Fold piece over and join side seams as follows:

Join from row 67 to row 118 on the side that has the markers for lower rib – joining these rs to the corresponding rs on the folded side.

Join rs 1 to rs 86 on the other side again joining then to the corresponding rs on the folded side.

Cabled Sweater



Y-959

Instructions (cont.)

RIGHT SLEEVE

RSF with US 10½ needles pick up and K20sts across the first 20sts on the cast on row and then 20sts across the last 20sts on the cast off row. 40sts.

Wk as follows:

Row 1: K2, P2, rep from * to end.

Row 2: K all K sts and P all P sts to end.

Rep the last 2 rs for a further 36rs.

Cast off.

Sew remainder of cast on row to cast off row.

LOWER RIB

RSF with US 10½ circular needle pick up and K 132sts evenly from lower rib marker around to lower rib marker on the opposite side.

Working in rounds wk 18round in K2, P2 rib. Cast off.



LEFT SLEEVE

RSF with US 10½ circular needle pick up and K40sts evenly between the sleeve markers.

Working in rounds wk 38 rounds in K2, P2 rib.

Cast off.

COLLAR

RSF with US 10½ circular needle pick up and K80sts evenly from neck marker to neck marker.

Knit 26 rounds.

Cast off.

