

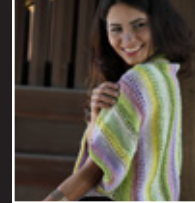
**NORO**

Ayatori

# Shrug Style Jacket



# Shrug Style Jacket



YS-568

## Size

ONE SIZE To fit bust 34/38in (86/96cm)

## Finished Measurements

Width 41in/104cm (flat)

Length 21in/53cm (at centre back, approx.)

## Materials

US 7 (4½mm) needles (x2)

US 3 (3.25mm) crochet hook

300 gr (about 6 skeins) Noro Ayatori shade #24

## Tension

Measured over st.st. using US 7 needles 19sts x 27rs = 4in (10cm) square.

## Instructions

### *BACK (KNIT HORIZONTALLY)*

With US 7 needles cast on 89sts and wk as follows:

Row 1: (RSF) Knit to end.

Row 2: Knit to end.

Row 3: \* K2tog, yf, rep to the last sts, K1.

Row 4: Knit to end.

Row 5: Knit to end.

Row 6: Knit to end.

Row 7: As row 3.

Row 8: Knit to end.

Row 9: Knit to end.

Row 10: Purl to end.

Rep the last 2 rs 5 times more.

These 20rs form the pattern.

Rep these 20rs until wk measures 41 ins from beg (aprox) ending with a row 8.

Cast off.

### *RIBS*

RSF with US 7 needles pick up and K175sts evenly along one side of wk.

Wk rib as follows:

Row 1: K1, \* P1, K1, rep from \* to end.

Row 2: K all K sts and P all P sts to end.

Rep the last 2 rs for a further 32rs.

Cast off.

Rep on the other side of work.

### *FINISHING*

Fold wk in half and join the ribs only at each side.

### *EDGING*

With US 3 crochet hook rejoin yarn at lower side edge of rib and wk as follows:

3ch, slip stitch to top of 2nd stitch, \* 3ch, skip one stitch, slip stitch to top of next stitch, rep from\* all around lower rib. Fasten off.

*Revised 7/3/13*

