

NORO

Taiyo

Half Sleeve Top



Half Sleeve Top



YS-573

Sizes

32/34in (81/86cm) | 34/36in (86/91cm) | 36/38in (91/96cm)

Finished Measurements

Width (underarm)

37in/94cm | 38½in/98cm | 40in/102cm

Length 26in/66cm

Materials

US 9 (5½mm) needles (x2)

Noro Taiyo shade #49

270gr (3 skeins) | 310gr (4skeins) | 350gr (4 skeins)

Tension

Measured over st.st. using US 9 needles 17sts x 24rs = 4in (10cm) square.

Instructions

CABLE PANEL (10STS)

Row 1: (RSF) [K2, P2] twice, K2.

Row 2: K all K sts and P all P sts.

Rep the last 2rs twice more.

Row 7: T3F, K4, T3B.

Row 8: K1, P8, K1.

Row 9: P1, T3F, K2, T3B, P1.

Row 10: K2, P6, K2.

Row 11: P2, C6B, P2.

Row 12: K2, P6, K2.

Row 13: P2, K6, P2.

Row 14: As row 12.

Rep the last 2 rs twice more. (18rs)

Row 19: As row 11.

Row 20: As row 12.

Row 21: P1, T3B, K2, T3F, P1.

Row 22: K1, [P2, K1] 3 times.

Row 23: T3B, P1, K2, P1, T3F.

Row 24: [P2, K2] twice, P2.

Row 25: [K2, P2] twice, K2.

Row 26: As row 24.

Rep the last 2 rs 3 times more.

Row 33: T3F, P1, K2, P1, T3B.

Row 34: As row 22.

Rep patt from row 9 as required.

BACK

With US 9 needles cast on 78(82,86)sts and wk rib as follows:

Row 1: (RSF) K2, * P2, K2, rep from * to end.

Row 2: K all K sts and P all P sts to end.

Rep the last 2 rs for a further 12rs.

Wk main patt as follows:

Row 1: (RSF) P34(36,38)sts, wk row 1 cable panel for 10sts, P34(36,38)sts.

Row 2: K34(36,38)sts, wk row 2 cable panel for 10sts, K34(36,38)sts.

Cont in patt as set *AT THE SAME TIME* inc 1 st at each end of row 25, row 53 and row 81.

Wk one row more.

Place a colored marker at each end of the last row. (marks armhole)

Then cont in patt inc 1 st at each end of row 109. Cont straight for a further 13rs thus ending on a row 18 of cable panel. 86(90,94)sts.

NR: (RSF) P39(41,43), C8B, P39(41,43).

NR: K39(41,43), P8, K39(41,43).

DIVIDE FOR BACK 'V' NECK

Row 1: (RSF) P38(40,42)sts, K2tog, K3, turn and put rem sts on a spare needle.

Row 2: P4, knit to end.

Row 3: Purl to the last 5sts, K2tog, K3.

Row 4: P4, knit to end.

Rep the last 2 rs twice more.

Row 9: Cast off 4sts, purl to the last 5sts, K2tog, K3.

Row 10: P4, knit to end.

Rep the last 2 rs 6 times more.

Cast off rem 4(6,8)sts.

Return to the sts on the spare needle. RSF rejoin yarn and wk as follows:

Row 1: K3, K2tog, purl to end.

Row 2: Knit to the last 4sts, P4.

Rep the last 2 rs 3 times more.

Row 9: K3, K2tog, purl to end.

Row 10: Cast off 4sts and patt to end.

Rep the last 2 rs 6 times more.

Cast off rem 4(6,8)sts.

FRONT

Cast on and wk as given for back until 96 rs worked thus ending on row 18 of cable panel. 84(88,92)sts.

NR: (RSF) P38(40,42), C8B, P38(40,42).

NR: K38(40,42), P8, K38(40,42).

DIVIDE FOR FRONT 'V' NECK

Row 1: (RSF) P37(39,41)sts, K2tog, K3, turn and put rem sts on a spare needle.

Row 2: P4, knit to end.

Row 3: Purl to the last 4sts, K4.

Row 4: P4, knit to end.

Row 5: Purl to the last 5sts, K2tog, K3.

Row 6: P4, knit to end.

Rep the last 4 rs once more.

Row 11: As row 3.

Row 12: As row 4.

Row 13: Inc 1 st into the first st, purl to the last 5sts, K2tog, K3.

Row 14: P4, knit to end.

Row 15: Purl to the last 4sts, K4.

Row 16: P4, knit to end.

Row 17: Purl to the last 5sts, K2tog, K3.

Row 18: P4, knit to end.

Rep the last 4 rs 4 times more.

Row 35: Cast off 4sts, purl to the last 4sts, K4.

Row 36: P4, knit to end.

Row 37: Cast off 4sts, purl to the last 5sts, K2tog, K3.

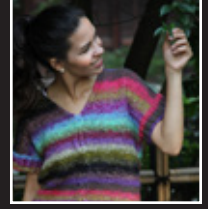
Row 38: P4, knit to end.

Rep the last 4 rs once more more.

Row 43: As row 35.

Row 44: As row 36.

Half Sleeve Top



YS-573

Rep the last 2 rs twice more.

Cast off rem 4(6,8)sts.

Return to the sts on the spare needle. RSF rejoin yarn to and wk as follows:

Row 1: K3, K2tog, purl to end.

Row 2: knit to the last 4sts, P4.

Row 3: K4, purl to end.

Row 4: Knit to the last 4sts, P4.

Rep the last 4 rs twice more.

Row 13: K3, K2tog, purl to the last st, inc 1 st into the last st.

Row 14: Knit to the last 4sts, P4.

Row 15: K4sts, purl to end.

Row 16: Knit to the last 4sts, P4.

Row 17: K3, K2tog, purl to end.

Row 18: Knit to the last 4sts, P4.

Rep the last 4 rs 4 times more.

Row 35: K4sts, purl to end.

Row 36: Cast off 4sts, knit to the last 4sts, P4.

Row 37: K3, K2tog, purl to end.

Row 38: Cast off 4sts, knit to the last 4sts, P4.

Rep the last 4 rs once more.

Row 43: As row 35.

Row 44: As row 36.

Rep the last 2rs twice more.

Cast off rem 4(6,8)sts.

ARMBANDS

Join shoulder seams.

RSF with US 9 needles pick up and K74sts evenly around armhole from colored marker to colored marker.

Wk 13 rs in K2, P2 rib as given for back.

Cast off.

FINISHING

Sew up side and armband seams.

