



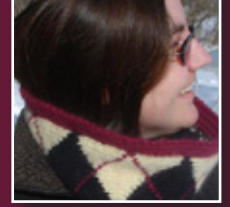
CHADWICK

argyle cowl



CHADWICK

argyle cowl



FINISHED MEASUREMENTS

9" tall x 26" circumference

MATERIALS

3 balls (1 of each color) of Juniper Moon Farm Chadwick

Main Color (MC): Black Magic (#10)

Contrasting Color (CC): Dawn (#3)

Accent Color (AC): Syrah (#4)

Needles: US 8 (or size needed to obtain gauge)

Notions: Smooth piece of contrasting color yarn in a similar weight for provisional cast on, crochet hook in appropriate size, stitch marker.

GAUGE

4.5 sts x 6 rows = 1"

ABBREVIATIONS

BO = Bind Off

CO = Cast On

K = Knit

P = Purl

PM = Place Marker

SM = Slip Marker

St(s) = Stitch(es)

St st = Stockinette Stitch

CREDITS

Garment design and photography:

Ann McClure

INSTRUCTIONS

NOTE: 6 edge sts in K1,P1 rib worked with accent color are not shown on chart.

Use different balls of accent color for the ribbed edge and for the chart (i.e., 4 balls). Divide the ball of contrasting color yarn in half.

With crochet hook and scrap yarn chain 50.

Cast on 44 sts by working into bumps on back of crochet chain in pattern to match chart row 1: AC 7 sts, CC 14 sts, MC 2 sts, CC 14 st, AC 7 sts

Row 1 (right side): With AC K1, P1 (3 times), PM, work next 32 sts according to chart, PM, with AC P1, K1 (3 times)

Row 2 (wrong side): P1, K1 (3 times), SM, work next 32 sts according to chart row 2, SM, K1, P1 (3 times)

Continue in rib and chart patterns as established until 5 complete diamonds have been worked.

Transfer sts from crochet chain to spare knitting needle.

Join ends of cowl using Kitchener stitch or 3-needle bind off.

Weave in ends.

