



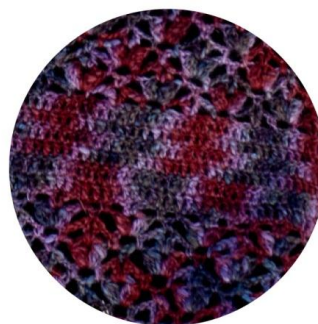
Araucania Yarns
NATURAL INSPIRATION
CHILE

Designs by
Mestizo / MLP

COZY DRESS YELCHO / A1015

YELCHO

COZY DRESS YELCHO



SIZE : M (S , L)

SKILL LEVEL : INTERMEDIATE

FINISHED MEASUREMENTS :

TO FIT BUST: 92(86,98) CM; 36 1/4(34,38 1/2)"

LENGTH : 88(87,89) CM 34 5/8(34 1/4,35)"

MATERIALS :

YELCHO , 700 (700,800)GRS. SHADE 1810
CROCHET HOOK E/4 (US) / 3,5 MM
CROCHET HOOK H/8 (US) / 5 MM OR SIZE TO OBTAIN GAUGE

IMPORTANT

AS THERE ARE NO DYE LOTS, WE RECOMMEND BUYING ENOUGH YARN AT ONE TIME TO COMPLETE EACH PROJECT.

PLEASE NOTE THAT DUE TO HAND DYING, HANKS ARE NEVER THE SAME, KNITT WITH TWO HANKS IN ASSORTED ROWS, THIS WILL ASSURE AN OVERALL BLENDED EFFECT.

FOR CARE INSTRUCTIONS FOLLOW LABEL ON THE BALL.

ABBREVIATIONS :

ST : STITCH
K : KNIT
P : PURL
ST-ST : STOCKINETTE STITCH
REM : REMAINING
WS : WRONG SIDE
RS : RIGHT SIDE
PATT : PATTERN
BEG : BEGINNING
REP : REPEAT
DEC : DECREASE
INC : INCREASE

STITCH GLOSSARY :

- **FPDC:** YARN OVER HOOK, INSERT HOOK FROM FRONT TO BACK, TO FRONT AGAIN AROUND POST OF ST INDICATED, YARN OVER HOOK AND PULL UP A LOOP (3 LOOPS ON HOOK) [YARNOVER HOOK AND DRAW THROUGH 2 LOOPS ON HOOK] TWICE.
- **BPDC:** YARN OVER HOOK, INSERT HOOK FROM BACK TO FRONT, TO BACK AGAIN AROUND THE POST OF NEXT ST, YARN OVER HOOK, DRAW YARN THROUGH ST, [YARN OVER HOOK, DRAW YARN THROUGH 2 LOOPS ON HOOK] TWICE.

STITCHES :

CABLE ST, SEE CHART 1
POST STITCH RIBBING, SEE CHART 2.
PATT ST, SEE CHART 3
DOUBLE CROCHET (DC), SEE CROCHET SYMBOLS.

GAUGE :

WITH SIZE H/8 CROCHET HOOK:
IN DC ST : 14 STS AND 8 ROWS = 10 X 10 CM 4 X4"
IN PATT ST: (CHART 3) = 1 MOTIF AND 5 ROWS = 2 1/2 X 2 1/2"

DIRECTIONS :

BACK:

LOWER EDGE BAND:
USING SIZE H/8 CROCHET HOOK, WORK IN CABLE ST (CHART 1), WHEN PIECE MEASURES 58 (55, 61) CM; 22 3/4 (21 5/8, 24)". FASTEN OFF.

WITH RS FACING, PICK UP 80(77,86) STS ALONG BAND EDGE, AND WORK 3 ROWS IN POST ST RIBBING (CHART 2).
NEXT WS ROW, WORK IN DC ST.

CONTINUE TO WORK AS FOLLOWS:
6 ROWS IN PATT ST CHART 3, 6 ROWS IN DC ST AND 6 ROWS CHART 3.
CHANGE TO SIZE E/4 CROCHET HOOK AND WORK 6 ROWS IN DC ST. AT SAME TIME DEC 1 ST AT BEG OF EACH ROW = 68(65,74) STS.
THEN WORK 6 ROWS IN PATT ST (CHART 3).

CHANGE TO SIZE H/8 CROCHET HOOK AND WORK 6 ROWS IN DC ST AND 6 ROWS IN PATT ST (CHART 3).

ARMHOLES:

WORK 6 ROWS IN DC ST AND DEC AT BEG OF EACH ROW 1 TIME 4 STS, 4 TIMES 1 ST = 52(49,58) STS.
CONTINUE TO WORK EVEN, 4 ROWS IN PATT ST (CHART 3).
FASTEN OFF.

FRONT :

WORK IN THE SAME WAY AS BACK UNTIL NECKLINE.

NECKLINE:

WHEN FRONT MEASURES 83 CM (32 5/8) ", WORKING 6° ROW IN DC ST, BIND OFF THE 28 CENTRAL STS AND WORK EACH SIDE SEPARATELY.
CHANGE TO PATT ST (CHART 3) AND DEC AT NECKLINE EDGE, 6 TIMES, 2 STS.
WORK THE OTHER SIDE IN THE SAME WAY.

SLEEVE:

LOWER EDGE BAND:
USING SIZE H/8 CROCHET HOOK, WORK IN CABLE ST (CHART 1), WHEN PIECE MEASURES 36 (34, 38) CM; 14 1/8 (13 3/8, 15)". FASTEN OFF.

WITH RS FACING, PICK UP 50(47,53) STS ALONG BAND EDGE, AND WORK 3 ROWS IN POST ST RIBBING (CHART 2).
NEXT WS ROW, WORK IN DC ST.

CONTINUE TO WORK AS FOLLOWS:
6 ROWS IN PATT ST CHART 3, 6 ROWS IN DC AND 6 ROWS IN CHART 3.

SLEEVE CAP:

WORK 6 ROWS IN DC ST. AT SAME TIME DEC AT BEG OF EACH ROW 1 TIME 4 STS AND 5 TIMES 1 ST = 32(29,35) STS.
THEN WORK 4 ROWS IN CHART 3 AND DEC AT BEG OF EACH ROW 4 TIMES 1 ST = 24(21,27) STS.
FASTEN OFF.

COLLAR:

USING SIZE H/8 CROCHET HOOK, WORK IN CABLE ST (CHART 1), WHEN PIECE MEASURES 100 (96, 110) CM; 39 1/2 (37 3/4, 43 1/4)". FASTEN OFF.

WITH RS FACING, PICK UP 124(112,130) STS ALONG COLLAR EDGE, AND WORK 3 ROWS IN POST ST RIBBING (CHART 2).
NEXT WS ROW, WORK IN DC ST AND FASTEN OFF.

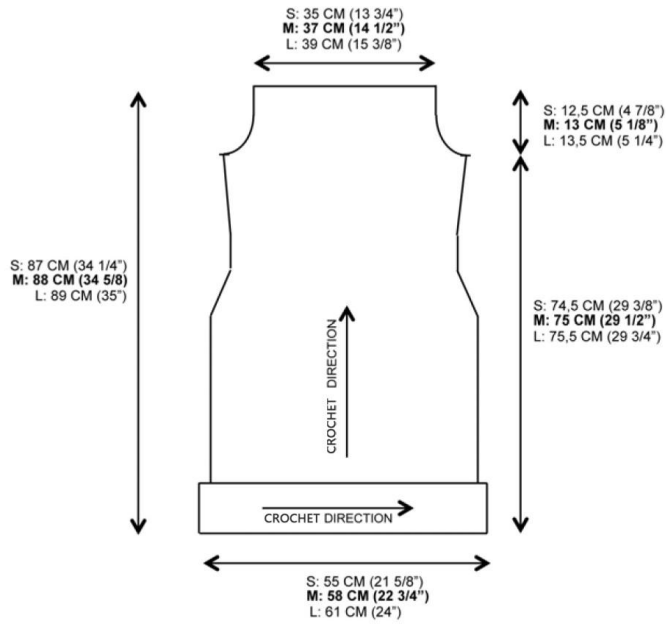
FINISHING :

BLOCK LIGHTLY TO MEASUREMENTS.

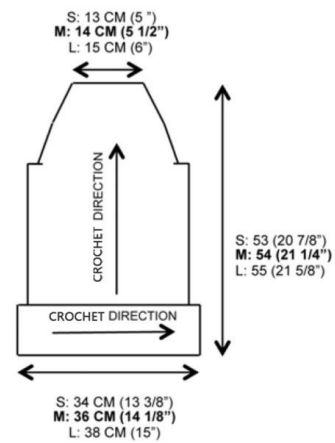
SEW SLEEVE AND SIDE SEAMS.
SEW COLLAR BAND TO NECKLINE EDGE.



BACK



SLEEVE



FRONT

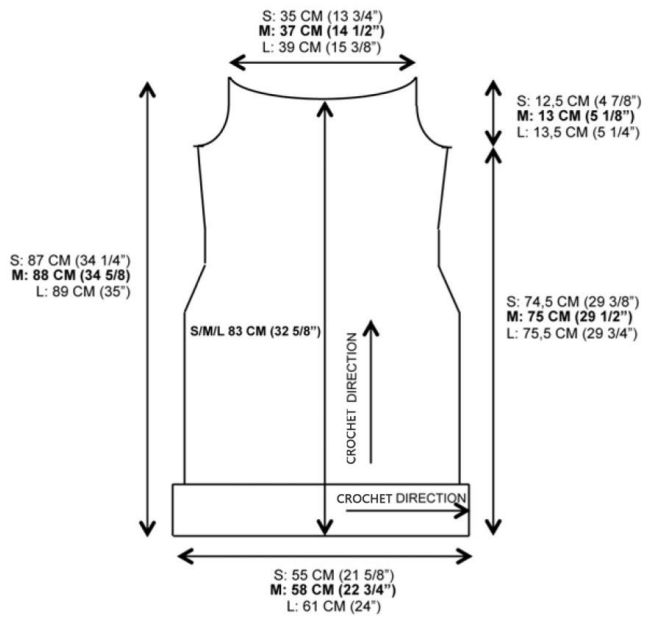
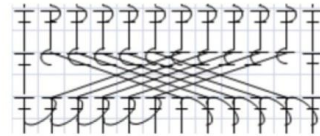
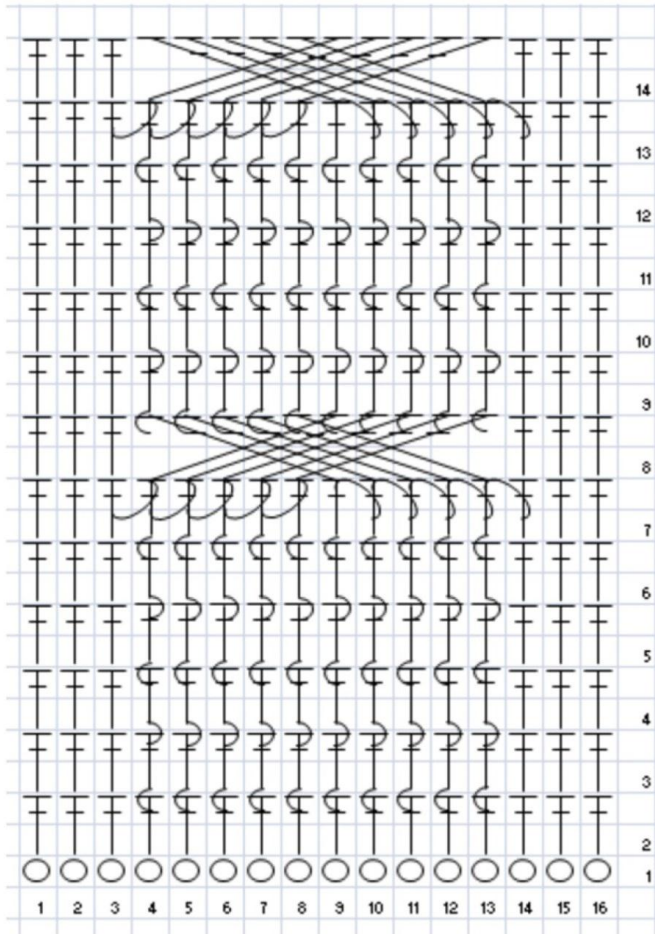





CHART 1



SKIP FIRST 5 STS, WORK FPDC AROUND POST OF NEXT 5 STS, WORKING IN FRONT OF ALL STS WORK FPDC IN 1^o-2^o-3^o-4^o-5^o STS

CHART 2

-  = DOUBLE CROCHET (DC)
-  = FRONT POST DC (FPDC)
-  = BACK POST DC (BPDC)

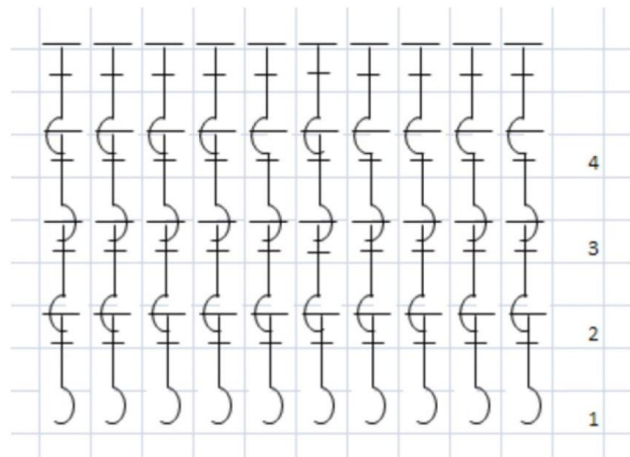
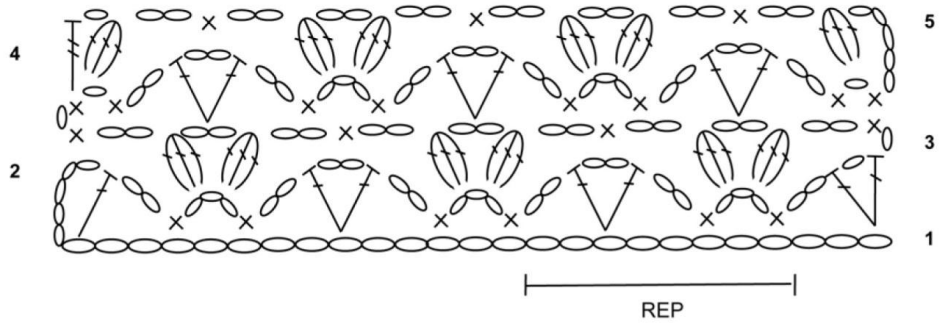








CHART 3





- | | | | | | |
|---|------------------------|---|-----------------|--|-----------------------|
|  | = TRIPLE CROCHET (TRC) |  | = V ST |  | = DOUBLE CROCHET (DC) |
|  | = 3 DC POPCORN ST |  | = CHAIN ST (CH) |  | = SINGLE CROCHET (SC) |

CROCHET HOOK SYMBOLS

-  **CHAIN ST (CH):** YARN OVER HOOK, PULL LOOP THROUGH.
- **SLIP ST (SL ST):** INSERT HOOK INTO 1 ST., YARN OVER HOOK, POOL LOOP THROUGH.
-  **SINGLE CROCHET (SC):** INSERT HOOK INTO 1 ST., YARN OVER HOOK, PULL LOOP THROUGH, YARN OVER AND PULL THROUGH LAST 2 STS ON HOOK.
-  **HALF DOUBLE CROCHET (HDC):** YARN OVER HOOK, INSERT HOOK INTO 1 ST, YARN OVER, PULL LOOP THROUGH, YARN OVER AND PULL THROUGH 3 STS ON HOOK .
-  **DOUBLE CROCHET (DC):** YARN OVER HOOK, INSERT HOOK INTO 1 ST, YARN OVER, PULL LOOP THROUGH, *YARN OVER AND PULL THROUGH 2 STS ON HOOK * REPEAT FROM * TO *.
-  **PICOT ST:** 3 STS IN CHAIN ST, AND END ROUND WITH 1 SLIP ST INSERTING HOOK IN THE FIRST CHAIN ST.
-  **TRIPLE CROCHET (TRC):** 2 YARNS OVER HOOK, INSERT HOOK INTO 1 ST, YARN OVER, PULL LOOP THROUGH, * YARN OVER AND PULL THROUGH 2 ST. ON HOOK * REPEAT FROM * TO * 3 TIMES.
-  **QUADRUPLE CROCHET:** 3 YARNS OVER HOOK, INSERT HOOK INTO 1 ST, YARN OVER, PULL LOOP THROUGH, * YARN OVER AND PULL THROUGH 2 ST. ON HOOK * REPEAT FROM * TO * 4 TIMES.
-  **SHELL ST.:** WORK SEVERAL STS. (SC, DC, TRC, ETC.,) IN THE SAME BASE STIICH.
- CRAB ST:** WORK SC, MOVING FROM LEFT TO RIGHT.
-  **POPCORN ST (POP):** (FROM 2 TO 6 STS) WORK 5 DC IN SAME ST, DROP LOOP FROM HOOK,INSERT HOOK IN TOP OF FIRST DC, PICK UP DROPPED LOOP, AND DRAW THROUGH ST, CHAIN 1 TIGHTLY TO SECURE (POP MADE).

NEEDLES SYMBOLS

-  **K1 :** KNIT ONE ST
-  **P1:** PURL ONE ST
-  **K2 TOG:** KNIT 2 STS TOGETHER
-  **K1,SL1, PSSO:** KNIT ONE, SLIP ONE, PASS SLIPPED STITCH OVER
-  **YO:** YARN OVER NEEDLE
- REP:** REPEAT
-  **CABLE 6 ST TO RIGHT:** PLACE 3 STS. ON CABLE NEEDLE AT BACK, K3, THEN K 3 STS FROM CABLE NEEDLE.