

K F I

L U X U R Y
C O L L E C T I O N

Designs by
Mestizo / MLP



REVERSIBLE CARDI WRAP / ANGORA MERINO (KFL6)

ANGORA MERINO

REVERSIBLE CARDI WRAP / ANGORA MERINO



SIZE : ALL

SKILL LEVEL : INTERMEDIATE

FINISHED MEASUREMENTS :

WIDTH ACROSS SHOULDERS AT BACK : 54 CM (21 1/4").

LENGTH : 94 CM (37")

MATERIALS :

- ANGORA MERINO 700 GRS, SHADE 8
- 1 PAIR 10 (US) / 6 MM KNITTING NEEDLES
OR SIZE TO OBTAIN GAUGE
- CROCHET HOOK J/10 (US) / 6 MM

ABBREVIATIONS :

ST : STITCH	K : KNIT
P : PURL	ST-ST : STOCKINETTE STITCH
REM : REMAINING	WS : WRONG SIDE
RS : RIGHT SIDE	PATT : PATTERN
BEG : BEGINNING	REP : REPEAT
DEC : DECREASE	INC : INCREASE



STITCHES :

MOSS STITCH:

1 ° AND 4 ° ROW : K1, *P1,K1; REP FROM * TO END.

2 ° AND 3 ° ROW : P1,*K1,P1; REP FROM * TO END.

REP THESE 4 ROWS

CROCHET HOOK PATT. ST.: SEE CHART 1

GAUGE :

IN MOSS ST, WITH SIZE 10 NEEDLES:

14 STS AND 22 ROWS = 4 X 4"

DIRECTIONS :

NOTE: FRONT AND BACK ARE KNITTED IN ONE PIECE.

CAST ON 98 ST, WORK IN MOSS ST.

ARMHOLE:

WHEN WORK MEASURES 42 CM (16 1/2") NEXT RS ROW, SHAPE ARMHOLE AS FOLLOWS: WORK FIRST ST OF ROW, BIND OFF 39 STS., WORK THE 58 REM. STS.

NEXT ROW (WS), WORK 58 STS., CAST ON 39 STS. AND WORK LAST ST. ON ROW (= 98 STS.).

CONTINUE TO WORK EVEN 54 CM (21 1/4") AND SHAPE ARMHOLE IN THE SAME WAY AS THE OTHER.

WORK EVEN 42 CM (16 1/2") MORE AND BIND OFF ALL STS.

(= 138 CM /54 1/4" FROM BEG. OF WORK).

SLEEVES:

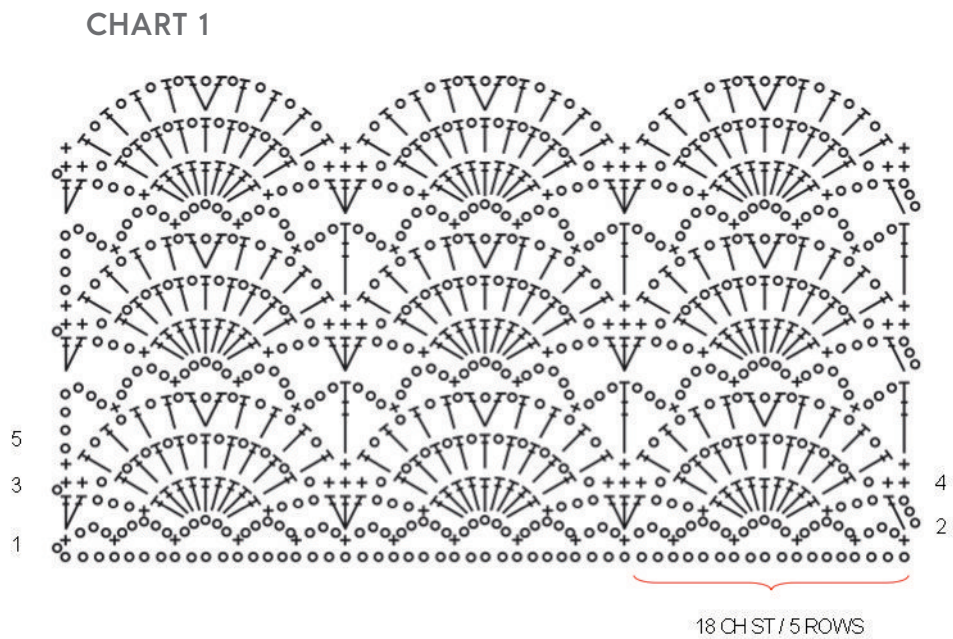
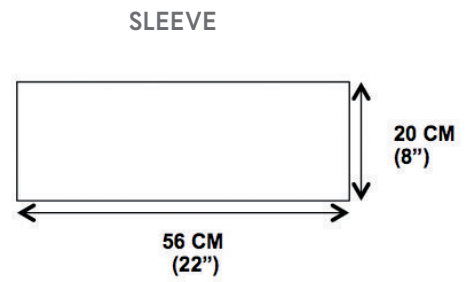
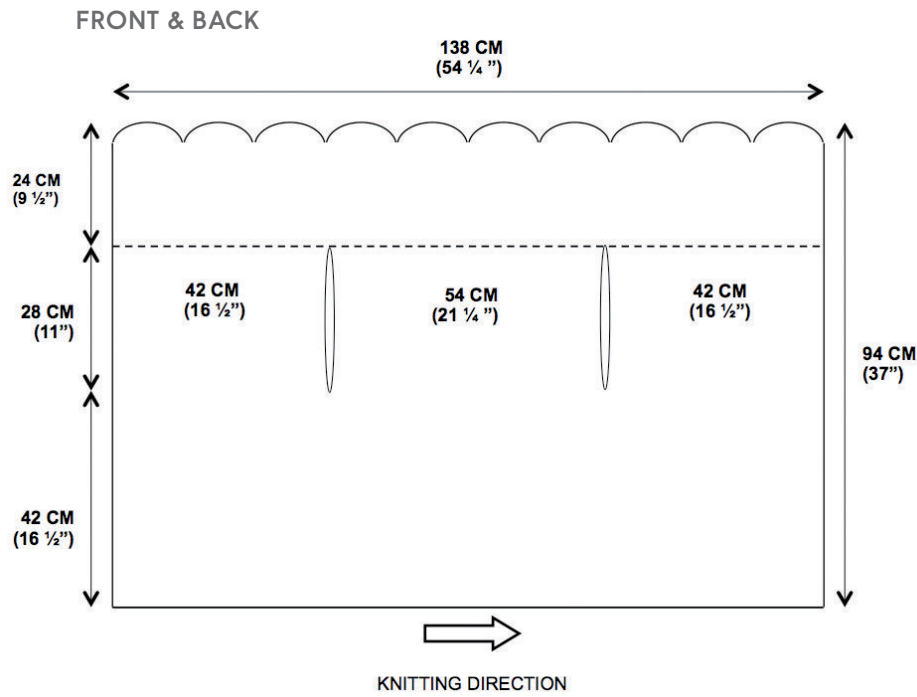
CAST ON 84 STS.. WORK IN MOSS ST., WHEN SLEEVE MEASURES 20 CM (8"), BIND OFF ALL STS.

WORK TWO.

FINISHING:

EDGING: WITH CROCHET HOOK, RS FACING, WORK 10 MOTIFS IN EDGING ST (SEE CHART 1) ALONG LEFT SIDE OF SHAWL (SHOWN WITH DOTTED LINE). REPEAT 5 ROWS OF PATTERN, 4 TIMES AND FASTEN OFF.

SEW SLEEVE SEAMS, SET IN SLEEVES TO ARMHOLES.





- = CHAIN ST
- T = DOUBLE CROCHET ST (DC)
- ≡ = TRIPLE CHOCHET ST (TR)
- + = SINGLE CHOCHET ST (SC)
- ∇ = 3 DC SHELL
- ∇ O T = V ST

CROCHET HOOK SYMBOLS


 **CHAIN ST (CH):** YARN OVER HOOK, PULL LOOP THROUGH.


• **SLIP ST (SL ST):** INSERT HOOK INTO 1 ST., YARN OVER HOOK, POOL LOOP THROUGH.


 **SINGLE CROCHET (SC):** INSERT HOOK INTO 1 ST., YARN OVER HOOK, PULL LOOP THROUGH, YARN OVER AND PULL THROUGH LAST 2 STS ON HOOK.

 **HALF DOUBLE CROCHET (HDC):** YARN OVER HOOK, INSERT HOOK INTO 1 ST, YARN OVER, PULL LOOP THROUGH, YARN OVER AND PULL THROUGH 3 STS ON HOOK .

 **DOUBLE CROCHET (DC):** YARN OVER HOOK, INSERT HOOK INTO 1 ST, YARN OVER, PULL LOOP THROUGH, *YARN OVER AND PULL THROUGH 2 STS ON HOOK * REPEAT FROM * TO *.

 **PICOT ST:** 3 STS IN CHAIN ST, AND END ROUND WITH 1 SLIP ST INSERTING HOOK IN THE FIRST CHAIN ST.

 **TRIPLE CROCHET (TRC):** 2 YARNS OVER HOOK, INSERT HOOK INTO 1 ST, YARN OVER, PULL LOOP THROUGH, * YARN OVER AND PULL THROUGH 2 ST. ON HOOK * REPEAT FROM * TO * 3 TIMES.

 **QUADRUPLE CROCHET:** 3 YARNS OVER HOOK, INSERT HOOK INTO 1 ST, YARN OVER, PULL LOOP THROUGH, * YARN OVER AND PULL THROUGH 2 ST. ON HOOK * REPEAT FROM * TO * 4 TIMES.

 **SHELL ST.:** WORK SEVERAL STS. (SC, DC, TRC, ETC.,) IN THE SAME BASE STIICH.

CRAB ST: WORK SC, MOVING FROM LEFT TO RIGHT.


 **POPCORN ST (POP):** (FROM 2 TO 6 STS) WORK 5 DC IN SAME ST, DROP LOOP FROM HOOK,INSERT HOOK IN TOP OF FIRST DC, PICK UP DROPPED LOOP, AND DRAW THROUGH ST, CHAIN 1 TIGHTLY TO SECURE (POP MADE).

NEEDLES SYMBOLS

 **K1 :** KNIT ONE ST

 **P1:** PURL ONE ST

 **K2 TOG:** KNIT 2 STS TOGETHER

 **K1,SL1, PSSO:** KNIT ONE, SLIP ONE, PASS SLIPPED STITCH OVER

 **YO:** YARN OVER NEEDLE

REP: REPEAT



CABLE 6 ST TO RIGHT: PLACE 3 STS. ON CABLE NEEDLE AT BACK, K3, THEN K 3 STS FROM CABLE NEEDLE.

IMPORTANT

AS THERE ARE NO DYE LOTS, WE RECOMMEND BUYING ENOUGH YARN AT ONE TIME TO COMPLETE EACH PROJYECT.

PLEASE NOTE THAT DUE TO HAND DYING, HANKS ARE NEVER THE SAME, KNITT WITH TWO HANKS IN ASSORTED ROWS, THIS WILL ASSURE AN OVERALL BLENDED EFFECT.

FOR CARE INSTRUCTIONS FOLLOW LABEL ON THE BALL.