

# NORO

Y-689







NO-Y689



### Y689

#### NORO BIG KUREYON DIAMOND AND MOSS STITCH JACKET

#### ONE SIZE

To fit bust 34/38 ins.  
86/96 cms.

#### FINISHED MEASUREMENTS

WIDTH 52 ins.  
132 cms

LENGTH 25 ins  
63 cms.

#### SLEEVE SEAM

17½ ins  
44 cms

#### MATERIALS

1 pair each of no 5½mm (UK5-USA8) and 6mm (UK4-USA9) needles.

Cable Needle. 6 buttons

Noro Big Kureyon x 100grm balls

Shade A 04 9 balls

Shade B 02 9 balls

#### TENSION

Measured over st.st. using 6mm needles 14sts x 21 rs = 10 cms (4 ins) square.

#### BACK

With 5½mm needles and A cast on 101sts and wk K1, P1, rib as follows:

[2rs A, 2rs B] twice, 2 rs A inc 11sts evenly along the last row. 112sts.

Change to 6mm needles and wk patt as follows:

**Row 1:** (RSF) Using A, P1, K16, [using B, P1, K8, P1, K24A] twice, using B P1, K8, P1, using A, K16, P1.

**Row 2:** In colours set, K all K sts and P all P sts to end.

**Row 3:** Using A P1, K16, [using B, P1, C8B, P1, K24A] twice, using B, P1, C8B, P1, using A, K16, P1.

**Row 4:** As row 2.

**Row 5:** As row 1.

**Row 6:** As row 2.

**Row 7:** As row 1.

**Row 8:** As row 2.

Rep rs 3 to 8 once more.

**Row 15:** As row 3.

**Row 16:** As row 2.

**Row 17:** As row 1.

**Row 18:** (VVSF) Using A K1, P15, [ms.st. 12B, P22A] twice, ms.st. 12B, using A, P15, K1.

**Row 19:** Using A, P1, K15, [ms.st. 12B, K22A] twice, ms.st. 12B, using A, K15, P1.

**Row 20:** Using A, K1, P14, [ms.st. 14B, P20A] twice, ms.st. 14B, using A, P14, K1.

**Row 21:** Using A, P1, K14, [ms.st. 14B, K20A] twice, ms.st. 14B, using A, K14, P1.

Cont moving diagonals as set, working 2sts extra into ms.st on the next and every foll alt row for a further 8 rs.

**Row 30:** Using A, K1, P8, K1, [ms.st. 24B, using A, K1, P8, K1] twice, ms.st. 24B, using A, K1, P8, K1.

**Row 31:** Using A, P1, C8B, P1, [ms.st. 24B, using A, P1, C8B, P1]

twice, ms.st. 24B, using A, P1, C8B, P1.

**Row 32:** As row 2.

**Row 33:** Using A, P1, K8, P1, [ms.st. 24B, using A, P1, K8, P1] twice, ms.st. 24B, using A, P1, K8, P1.

**Row 34:** As row 2.

**Row 35:** As row 33.

**Row 36:** As row 2.

Rep rs 31 to 36 inclusive once more.

**Row 43:** As row 31.

**Row 44:** As row 2.

**Row 45:** As row 33.

**Row 46:** Using A, K1, P10, [ms.st. 22B, P12A] twice, ms.st. 22B, using A, P10, K1.

**Row 47:** Using A, P1, K10, [ms.st. 22B, K12A] twice, ms.st. 22B, using A, K10, P1.

**Row 48:** Using A, K1, P11, [ms.st. 20B, P14A] twice, ms.st. 20B, using A, P11, K1.

**Row 49:** Using A, P1, K11, [ms.st. 20B, K14A] twice, ms.st. 20B, using A, K11, P1.

Cont moving diagonals as set, working 2sts less into ms.st on the next and every foll alt row for a further 8 rs.

**Row 58:** Using A, K1, P16, [using B, K1, P8, K1, P24A] twice, using B, K1, P8, K1, using A, P16, K1.

Rows 3 to 58 form the patt. Rep patt from row 3 until back measures 16 ins from beg ending with a wrong side row.

#### SHAPE ARMHOLES RSF

Cast off 5sts at the beg of the next 2 rs. Then dec 1 st at each end of the next 12 rs. 78sts rem. Patt straight until back measures 24 ins from beg, ending with a wrong side row.

#### SHAPE SHOULDER & BACK NECK

**Row 1:** (RSF) Cast off 9sts, patt





NO-Y689



until 20sts on right hand needle, turn and put rem sts on a spare needle.

**Row 2:** Wk2sts tog and patt to end.

**Row 3:** Cast off 8sts and patt to end.

**Row 4:** As row 2.

Cast off rem 8sts.

Return to the sts on the spare needle. Slip centre 24sts onto a st holder.

RSF rejoin yarn to rem sts and wk as follows:

**Row 1:** Patt to end.

**Row 2:** Cast off 9sts and patt to end.

**Row 3:** Wk2sts tog and patt to end.

**Row 4:** Cast off 8sts and patt to end.

**Row 5:** As row 3.

Cast off rem 8sts.

### RIGHT FRONT

With 5½mm needles and A cast on 47sts and wk rib as for back inc 5sts evenly along the last row. 52sts.

Change to 6mm needles and wk patt as follows:

**Row 1:** (RSF) Using B, P1, K8, P1, K24A, using B P1, K8, P1, K8A.

**Row 2:** In colours set, K all K sts and P all P sts to end.

**Row 3:** Using B, P1, C8B, P1, K24A, using B, P1, C8B, P1, K8A.

**Row 4:** As row 2.

**Row 5:** As row 1.

**Row 6:** As row 2.

**Row 7:** As row 1.

**Row 8:** As row 2.

Rep rs 3 to 8 once more.

**Row 15:** As row 3.

**Row 16:** As row 2.

**Row 17:** As row 1.

**Row 18:** (WSF) P7A, ms.st. 12B, P22A, ms.st. 11B.

**Row 19:** Ms.st. 11B, K22A, ms.st. 12B, K7A.

**Row 20:** P6A, ms.st. 14B, P20A, ms.st. 12B.

**Row 21:** Ms.st. 12B, K20A, ms.st. 14B, K7A.

Cont moving diagonals as set, working 2sts extra into ms.st on the next and every foll alt row for a further 8 rs.

**Row 30:** P1A, ms.st. 24B, using A, K1, P8, K1, ms.st. 17B.

**Row 31:** Ms.st. 17B, using A, P1, C8B, P1, ms.st. 24B, K1A.

**Row 32:** As row 2.

**Row 33:** Ms.st. 17B, using A, P1, K8, P1, ms.st. 24B, K1A.

**Row 34:** As row 2.

**Row 35:** As row 33.

**Row 36:** As row 2.

Rep rs 31 to 36 inclusive once more.

**Row 43:** As row 31.

**Row 44:** As row 2.

**Row 45:** As row 33.

**Row 46:** P2A, ms.st. 22B, P12A, ms.st. 16B.

**Row 47:** Ms.st. 16B, K12A, ms.st. 22B, K2A.

**Row 48:** P3A, ms.st. 20B, P14A, ms.st. 15B.

**Row 49:** Ms.st. 15B, K14A, ms.st. 20B, K3A.

Cont moving diagonals as set, working 2sts less into ms.st on the next and every foll alt row for a further 8 rs.

**Row 58:** P8A, using B, K1, P8, K1, P24A, using B, K1, P8, K1.

Rows 3 to 58 form the patt.

Rep patt from row 3 until front measures same as back up to beg of armhole shaping ending with a right side row.

### SHAPE ARMHOLE WSF

Cast off 5sts at the beg of the next row. Then dec 1 st at armhole edge on the next 12 rs. 35sts rem. Patt straight until

front is 18 rs shorter than back (measuring from top of shoulder) ending with a wrong side row.

### SHAPE FRONT NECK RSF

Cast off first 3sts and patt to end. Then dec 1 st at neck edge on the next 7 rs. 25sts rem. Patt 5 rs straight.

### SHAPE SHOULDER WSF

**Row 1:** Cast off 9sts and patt to end.

**Row 2:** Patt to end.

**Row 3:** Cast off 8sts and patt to end.

**Row 4:** As row 2.

Cast off rem 8sts.

### LEFT FRONT

Cast on and wk as for right front reversing patt placing thus:

**Row 1:** (RSF) K8A, using B, P1, K8, P1, K24A, using B, P1, K8, P1.

Cont and complete as for right front beg armhole shaping RSF, neck shaping WSF and shoulder shaping RSF

### SLEEVES

With 5½mm needles cast on 43sts and wk rib as follows:

[2 rs A, 2 rs B] 6 times inc 3sts evenly along the last row. 46sts.

Change to 6mm needles and wk patt as follows AT THE SAME

TIME inc 1 st at each end of the 3rd and every foll 4th row:

**Row 1:** (RSF) K18A, using B, P1, K8, P1, K18A.

**Row 2:** In colours set, K all K sts and P all P sts to end.

**Row 3:** (inc row) K19A, using B, P1, C8B, P1, K19A.

**Row 4:** As row 2.

**Row 5:** K19A, using B, P1, K8, P1, K19A.

**Row 6:** As row 2.

**Row 7:** (inc row) K20A, using B, P1, K8, P1, K20A.



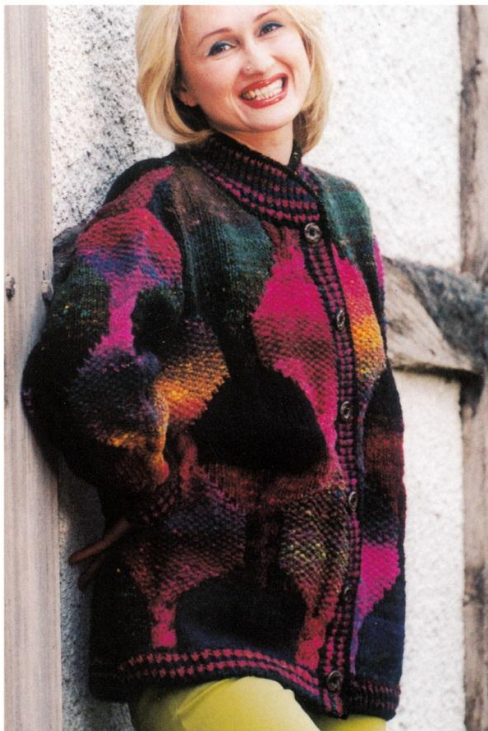
# NORO

## Y-689

Noro Big Kureyon



NO-Y689



**Row 8:** As row 2.

Keeping to inc rep rs 3 to 8 once more.

**Row 15:** (inc row) K22A, P1, C8B, P1, K22A.

**Row 16:** As row 2.

**Row 17:** K22A, P1, K8, P1, K22A.

**Row 18:** P21A, ms.st. 12B, P21A.

**Row 19:** (inc row) K22A, ms.st. 12B, K22A.

**Row 20:** P21A, ms.st. 14B, P21A.

**Row 21:** K21A, ms.st. 14B, K21A.

Patt is now set. Keeping to inc cont in patt as for body until 84sts. Wk straight until sleeve measures 17½ ins from beg, ending with a wrong side row.

### SHAPE TOP RSF

Cast off 4sts at the beg of the next 4 rs. Then cast off 3sts at the beg of the foll 6 rs. Then cast off 2sts at the beg of the foll 12 rs. Cast off rem 26sts.

### BUTTONHOLE BAND

RSF with 5½mm needles and A pick up and K123sts evenly up right front, from hem up to beg of neck shaping.

Wk K1, P1, rib as follows:

Rib 1 row A, 2rs B.

**NR:** (RSF) Using A, (make buttonholes) rib 8sts, [yf, K2tog, rib 20sts] 5 times, yf, K2tog, rib 3sts.

**NR:** Using A rib to end.

Rib 2 rs B, 2 rs A. Cast off.

### BUTTONBAND

RSF with 5½mm needles and A pick up and K123sts evenly down left front, from beg of neck shaping down to hem.

Wk K1, P1, rib as follows:

Rib 1 row A, [2rs B, 2 rs A] twice.

Cast off.

### COLLAR (join shoulder seams)

RSF with 5½mm needles and A pick up and knit around neck edge as follows:

8sts across buttonhole band, 22sts evenly up right front neck edge, 3sts down right back neck edge, 24sts across centre back neck, 3sts up left back neck edge, 22sts evenly down left front neck edge and 8sts across buttonband. 90sts.

Wk K1, P1, rib as follows:

1 row A,

2rs B, 2 rs A, 2 rs B.

**Row 8:** (RSF) Using A, rib to last 2sts, turn.

**Row 9:** As row 8.

**Row 10:** Using B rib to last 2sts, turn.

**Row 11:** As row 10.

Rep the last 4 rs once more.

Break off yarn.

Slip all sts onto the same needle. RSF rejoin yarn and pick up and K8sts evenly up side of collar, rib across 90sts, pick and K8sts down opposite side of collar. 106sts. Cast off.

### MAKE UP

Sew in sleeves thus: pin centre point of sleeve cast off edge to shoulder seam and stitch to body working from underarm to shoulder. Sew up side and sleeve seams. Sew in all loose threads.

Sew on buttons.