



**NORO**

Y-686



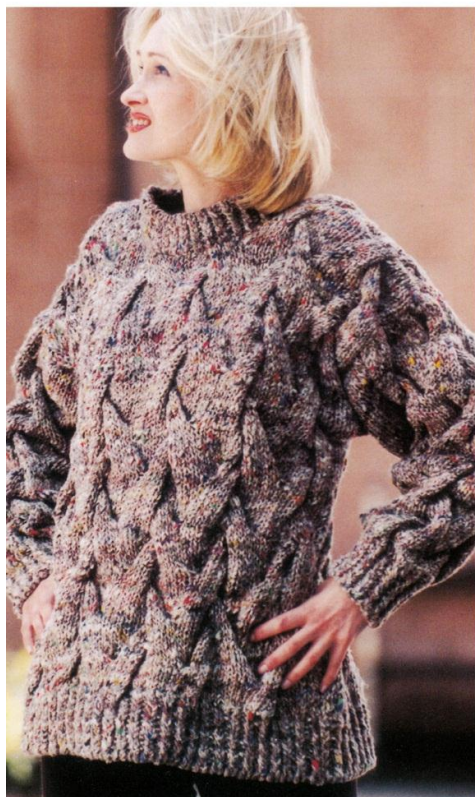
# NORO

## Y-686

Noro Kabuto



NO-Y686



**Y686**

### NORO KABUTO LADIES GIANT CABLE SWEATER

#### SIZES

To fit bust 32/34 36/38 ins.  
81/86 91/96 cms.

#### FINISHED MEASUREMENTS

##### WIDTH

41 48 ins.  
104 122 cms.

##### LENGTH

25 26 ins.  
63 66 cms.

##### SLEEVE LENGTH

18 19 ins.  
45 48 cms

#### MATERIALS

1 pair each of no 7½mm (UK1-USA11) and 8mm (UK0-USA12) needles.

Cable Needle.

Noro Kabuto x 50grm balls

Shade 11 25 26 balls

#### TENSION

Measured over patt using 8mm needles 18sts x 18rs = 10 cms (4 ins) square.

#### BACK

With 7½mm needles cast on 57(65)sts and wk 3 ins in K1tbl, P1, rib inc 35(45)sts evenly along the last row. 92(110)sts.

Change to 8mm needles and wk patt as follows:

**Row 1:** (RSF) Knit to end.

**Row 2:** Purl to end.

Rep the last 2 rs twice more.

**Row 7:** P1, [K6, C12B] 5(6) times, P1.

**Row 8:** As row 2.

Rep rs 1 and 2 for a further 8 rs.

**Row 17:** P1, [C12F, K6] 5(6) times, P1.

**Row 18:** As row 2.

Rep patt from row 1 until back measures 24(25) ins from beg, ending with a wrong side row.

#### SHAPE BACK NECK

**Row 1:** (RSF) Patt 35(41)sts, turn and put rem sts on a spare needle.

**Row 2:** Wk2sts tog and patt to end.

**Row 3:** Patt to end.

**Row 4:** As row 2.

Cast off rem 33(39)sts.

Return to the sts on the spare needle. Slip centre 22(28)sts onto a st holder.

RSF rejoin yarn to rem sts and wk as follows:

**Row 1:** Wk2sts tog and patt to end.

**Row 2:** Patt to end.

**Row 3:** As row 1.

**Row 4:** As row 2.

Cast off rem 33(39)sts.

#### FRONT

Cast on and wk as for back until front is 12(14)rs shorter than back.

#### SHAPE FRONT NECK RSF

Patt 37(46)sts and put rem sts on a spare needle. Turn P2tog, and patt to end. Cont to dec 1 st at

neck edge on the next 3(6) rs. 33(39) sts rem. Patt straight until front measures same as back. Cast off.

Return to the sts on the spare needle. Slip centre 18sts onto a st holder. RSF rejoin yarn to rem sts and complete to match first side reversing shapings.

#### SLEEVES

With 7½mm needles cast on 27(29)sts and wk 3 ins in K1tbl, P1 rib inc 29sts evenly along the last row. 56(58)sts.

Change to 8mm needles and wk patt as follows AT THE SAMETIME inc 1 st at each end of the 3rd and every foll 5th row:

**Row 1:** (RSF) Knit to end.

**Row 2:** Purl to end,

Keeping to inc rep the last 2 rs twice more.

**Row 7:** K2(3), [K6, C12B] 3 times, K2(3).

**Row 8:** Purl to end.

Keeping to inc rep rs 1 and 2 for a further 8 rs.

**Row 17:** K4(5), [C12F, K6] 3 times, K4(5).

**Row 18:** As row 2.

Keeping to inc rep patt from row 1 until 82(84)sts working inc sts into st.st.

Wk straight until sleeve measures 18(19) ins from beg, ending with a wrong side row. Cast off.

#### NECKBAND

(join right shoulder seam)

RSF with 7½mm needles pick up and knit around neck edge as follows:

12(14)sts evenly down left front neck edge, 18sts across centre front, 12(14)sts evenly up right front neck edge, 2sts down right back neck edge, 22(28)sts across

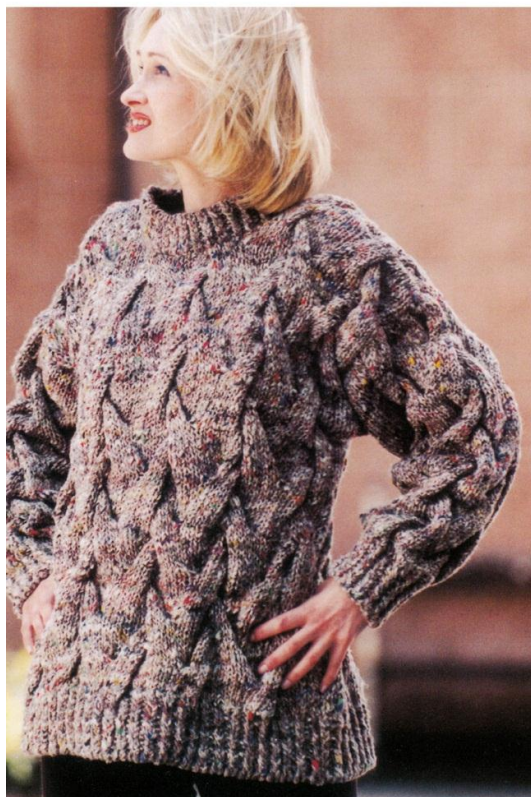
# NORO

## Y-686

Noro Kabuto



NO-Y686



centre back neck and 2sts up left back neck edge. 68(78)sts.

Wk 2 ins in K1tbl, P1 rib. Cast off loosely.

### MAKE UP

Join left shoulder and neckband seams. Sew in sleeves thus: pin centre point of sleeve cast off edge to shoulder seam and stitch to body working from shoulder to underarm. Sew up side and sleeve seams. Sew in all loose threads.