

# NORO

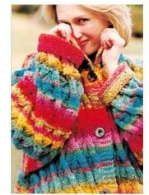
Y-705



# NORO

## Y-705

Noro Iro



NO-Y705



### Y705 NORO IRO CABLED COAT

#### ONE SIZE

To fit bust 34/38 ins.  
86/96 cms.

#### FINISHED MEASUREMENTS

WIDTH 59 ins.  
150 cms

LENGTH 39 ins  
99 cms.

#### SLEEVE SEAM

18 ins  
45 cms

#### MATERIALS

1 pair each of no 7½mm (UK1-USA11) and 8mm (UK0-USA12) needles.

Cable Needle. 5 Buttons.

Noro Iro x 100grm balls  
Shade 18 23 balls

#### TENSION

Measured over st.st. using 8mm needles 12sts x 17 rs = 10 cms (4 ins) square.

#### BACK

With 8mm needles cast on 91sts and K9 rs.

**NR:** (WSF) (inc row) Knit twice into first st, \* M1, K1 rep from \* to end. 182sts.

Wk patt as follows:

**Row 1:** (RSF) P1, [K8, P4] 15 times, P1.

**Row 2:** K all K sts and P all P sts to end.

Rep the last 2 rs twice more.

**Row 7:** P1, [C8F, P4] 15 times, P1.

**Row 8:** K1, [P8, K4] 15 times, K1.

**Row 9:** P1, [P4, K8]] 15 times, P1.

**Row 10:** As row 2.

Rep the last 2 rs once more.

**Row 13:** P1, [P4, C8F] 15 times, P1.

**Row 14:** K1, P4, [K4, P8] 14 times, K4, P4, K1.

**Row 15:** P1, K4, P4, [K8, P4] 14 times, K4, P1.

**Row 16:** As row 2.

Rep the last 2 rs once more.

**Row 19:** P1, K4, [P4, C8F] 14 times, P4, K4, P1.

**Row 20:** K1, [K4, P8] 15 times, K1.

**Row 21:** P1, [K8, P4] 15 times, P1.

**Row 22:** As row 2.

Rep the last 2 rs once more.

**Row 25:** P1, [C8F, P4] 15 times, P1.

**Row 26:** K1, [P8, K4] 15 times, K1.

Rows 9 to 27 form the patt.

Rep patt from row 9 AT THE SAME TIME dec 1 st at each end of the next and every foll 4th row until 146sts rem. Wk straight until back measures 27 ins from beg, ending with a wrong side row.

#### SHAPE ARMHOLES RSF

Cast off 11sts at the beg of the next 2 rs. Then dec 1 st at each end of the foll 18 rs. 88sts rem. Patt straight until back measures 38 ins from beg, ending with a wrong side row.

#### SHAPE SHOULDERS and BACK NECK

**Row 1:** (RSF) Cast off first 9sts, patt until 20sts on right hand needle, turn and put rem sts on a spare needle.

**Row 2:** Wk2sts tog and patt to end.

**Row 3:** Cast off 9sts and patt to end.

**Row 4:** As row 2.

Cast off rem 9sts.

Return to the sts on a spare

needle. RSF rejoin yarn and cast off centre 30sts and wk on rem sts as follows:

**Row 1:** Patt to end.

**Row 2:** Cast off 9sts and patt to end.

**Row 3:** Wk2sts tog and patt to end.

**Row 4:** As row 2.

**Row 5:** As row 3.

Cast off rem 9sts.

#### LEFT FRONT

With 8mm needles cast on 47sts and K9 rs.

**NR:** (WSF) (inc row) K5, \* M1, K1, rep from \* to last st, M1, knit twice into last stitch. 90sts.

Wk patt as follows:

**Row 1:** (RSF) P1, [K8, P4] 7 times, K5.

**Row 2:** K5, K all K sts and P all P sts to end.

Rep the last 2 rs twice more.

**Row 7:** P1, [C8F, P4] 7 times, K5.

**Row 8:** K5, [P8, K4] 7 times, K1.

**Row 9:** P1, [P4, K8]] 7 times, K5.

**Row 10:** As row 2.

Rep the last 2 rs once more.

**Row 13:** P1, [P4, C8F] 7 times, K5.

**Row 14:** K5, P4, [K4, P8] 6 times, K4, P4, K1.

**Row 15:** P1, K4, P4, [K8, P4] 6 times, K4, K5.

**Row 16:** As row 2.

Rep the last 2 rs once more.

**Row 19:** P1, K4, [P4, C8F] 6 times, P4, K4, K5.

**Row 20:** K5, [K4, P8] 7 times, K1.

**Row 21:** P1, [K8, P4] 7 times, K5.

**Row 22:** As row 2.

Rep the last 2 rs once more.

**Row 25:** P1, [C8F, P4] 7 times, K5.

**Row 26:** K5, [P8, K4] 7 times, K1.

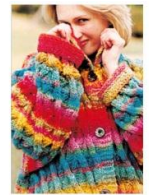
Rows 9 to 27 form the patt.

Rep patt from row 9 AT THE SAME TIME dec 1 st at the beg of

# NORO

## Y-705

Noro Iro



NO-Y705



the next and at this same edge on every foll 4th row until 72sts rem. Wk straight until front measures same as back up to beg of armhole shaping, ending with a wrong side row.

### SHAPE ARMHOLE RSF

Cast off 11sts at the beg of the next row. Then dec 1 st at armhole edge on the foll 18 rs. 43sts rem. Patt straight until front is 16 rs shorter then back (measuring from top of shoulder) and ending with a right side row.

### SHAPE FRONT NECK WSF

Cast off first 5sts and patt to end. Then dec 1 st at neck edge on the next 11 rs. 27sts rem. Patt one row.

### SHAPE SHOULDER RSF

**Row 1:** (RSF) Cast off 9sts and patt to end.

**Row 2:** Patt to end.

Rep the last 2 rs once more.

Cast off rem 9sts

Make positions for 5 buttons, the first 13 ins up from hem, the last 1 inch down from beg of neck shaping and the rem spaced evenly between.

### RIGHT FRONT

Cast on and wk as for left front working the 5 garter sts for the front band at the beg of right side rows and at the end of wrong side row and working buttonholes to match markers as follows:

Buttonholes rs:

**Row 1:** (RSF) K3, cast off 2sts, patt to end.

**Row 2:** Patt to end casting on 2sts over those cast off on previous row.

### SLEEVES

With 7½mm needles cast on 42sts and K20 rs inc 32sts evenly along the last row. 74sts.

Change to 8mm needles and wk patt as follows:

**Row 1:** (RSF) P1, [K8, P4] 6 times, P1

**Row 2:** K all K sts and P all P sts to end.

Cont in now set.

Cont in patt as for body AT THE SAME TIME inc 1 st at each end of the next and every foll 3rd row until 114sts working inc sts into patt. Wk straight until sleeve measures 18 ins from beg, ending with wrong side row.

### SHAPE TOP RSF

Cast off 4sts at the beg of the next 4 rs. Then cast off 3sts at the beg of the foll 20 rs. Cast off rem 38sts.

### COLLAR

With 8mm needles cast on 36sts and wk as follows:

**Row 1:** (RSF) [K8, P4] 3 times.

**Row 2:** K all K sts and P all P sts to end.

**Row 3:** Cast on 8sts and then K4, P4, [K8, P4] 3 times.

**Row 4:** Cast on 8sts and P8, K all K sts and P all P sts to end.

**Row 5:** Cast on 8sts, P4, [K8, P4] 4 times, K8.

**Row 6:** Cast on 8sts P4, K4, K all K sts and P all P sts to end.

**Row 7:** Cast on 9sts, P1, K8, P4, [C8F, P4] 5 times, K4..

**Row 8:** Cast on 9sts, K1, [P8, K4] 7 times, P1 (86sts)

Cont straight in patt as for body for a further 14 rs dec 24sts evenly along the last row. 62sts rem. Put sts on a spare needle. RSF with 8mm needles pick up

and K11sts up side of collar, 62sts from spare needle and 11sts down rem side of collar. Knit one row. Cast off.

### MAKE UP

Join shoulder seams. Sew on collar thus: pin centre point of cast on edge to centre back neck and stitch collar to neck edge meeting at centre of front bands. Sew in sleeves thus: pin centre point of sleeve cast off edge to shoulder seam and stitch to body working from underarm to shoulder. Sew up side and sleeve seams. Sew on buttons. Sew in all loose threads.