



NORO

Y-698



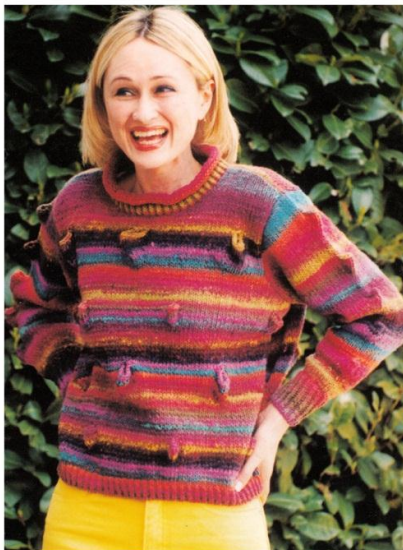
NORO

Y-698

Noro Kureyou



NO-Y698



**Y698
NORO KUREYON
LADIES SWEATER**

SIZES

To fit bust

32/34	34/36	36/38	ins.
81/86	86/91	91/96	cms

**FINISHED
MEASUREMENTS
WIDTH**

41	43	45	ins.
104	109	114	cms.

LENGTH

21	21	21	ins
53	53	53	cms.

SLEEVE SEAM

15	15	15	ins
38	38	38	cms

MATERIALS

1 pair each of no 5mm (UK6-USA7) and 5½mm (UK5-USA8) needles.

Noro Kureyon x 50grm balls
Shade
131 8 9 10 balls

TENSION

Measured over st.st. using 5½mm needles 17sts x 24rs = 10 cms (4 ins) square.

BACK

With 5mm needles cast on 88(92,96)sts and wk 1 inch in K1, P1 rib.

Change to 5½mm needles and wk patt as follows:

Row 1: (RSF) Knit to end.

Row 2: Purl to end.

Rep the last 2 rs for a further 8 rs.

Row 11: K7(9,11), [M1, K2, M1, K22] 3 times, M1, K2, M1, K7(9,11)

Row 12 and all foll alt rs unless row is stated: Purl to end.

Row 13: K7(9,11), [M1, K4, M1, K22] 3 times, M1, K4, M1, K7(9,11).

Row 15: K7(9,11), [M1, K6, M1, K22] 3 times, M1, K6, M1, K7(9,11).

Row 17: K7(9,11), [M1, K8, M1, K22] 3 times, M1, K8, M1, K7(9,11).

Row 19: K8(10,12) [cast off next 8sts, K24] 3 times, cast off next 8sts, K8(10,12).

Row 20: P7(9,11), [T2, P22] 3 times, T2, P7(9,11) 88(92,96)sts.

Row 21: Knit to end.

Row 22: Purl to end.
Rep the last 2 rs for a further 12 rs.

Row 35: K18(20,22), [M1, K4, M1, K20] twice, M1, K4, M1, K18(20,22).

Row 37: K18(20,22), [M1, K6, M1, K20] twice, M1, K6, M1, K18(20,22).

Row 39: K18(20,22), [M1, K8, M1, K20] twice, M1, K8, M1, K18(20,22).

Row 41: K18(20,22), [M1, K10, M1, K20] twice, M1, K10, M1, K18(20,22).

Row 43: K18(20,22), [M1, K12, M1, K20] twice, M1, K12, M1, K18(20,22).

Row 45: K18(20,22), [M1, K14, M1, K20] twice, M1, K14, M1, K18(20,22).

Row 47: K18(20,22) [M1, K1, cast off the next 14sts, K1, M1, K20] twice, M1, K1, cast off next 14sts, K1, M1, K18(20,22).

Row 48: P19(21,23), [T2, P22] twice, T2, P19(21,23).

Row 49: Knit to end.

Row 50: Purl to end.
Rep the last 2 rs for a further 14 rs.
Rep patt from row 11 to row 22 once more.

SHAPE ARMHOLES RSF

Row 77: Cast off first 6sts and knit to end.

Row 78: Cast off first 6sts and purl to end.

Cont in st.st. dec 1 st at each end of the next 8 rs. 60(64,68)sts rem.

Row 87: Knit to end.

Row 89: K4(6,8) [M1, K4, M1, K20] twice, M1, K4, M1, K4(6,8).

Row 91: K4(6,8), [M1, K6, M1, K20] twice, M1, K6, M1, K4(6,8).

Row 93: K4(6,8), [M1, K8, M1, K20] twice, M1, K8, M1, K4(6,8).

Row 95: K4(6,8), [M1, K10, M1, K20] twice, M1, K10, M1, K4(6,8).

Row 97: K4(6,8), [M1, K12, M1, K20] twice, M1, K12, M1, K4(6,8).

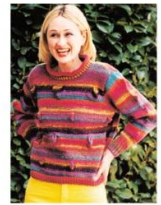
Row 99: K4(6,8), [M1, K14, M1, K20] twice, M1, K14, M1, K4(6,8).

Row 101: K4(6,8) [M1, K1, cast off next 14sts, K1, M1, K20] twice, M1, K1, cast off next 14sts,

NORO

Y-698

Noro Kureyou



NO-Y698



K1, M1, K4(6,8).

Row 102: P5(7,9), [T2, P22] twice, T2, P5(7,9).

Row 103: Knit to end.

Row 104: Purl to end.

Rep the last 2 rs for a further 20 rs.

SHAPE SHOULDER & BACK NECK

Row 1: (RSF) Cast off 6(6,6)sts, knit until 12(13,14)sts on right hand needle, turn and put rem sts on a spare needle.

Row 2: P2sts tog and purl to end.

Row 3: Cast off 5(6,6)sts and knit to end.

Row 4: As row 2.

Cast off rem 5(5,6)sts.

Return to the sts on the spare needle. Slip centre 24(26,28)sts onto a st holder.

RSF rejoin yarn to rem sts and wk as follows:

Row 1: Knit to end.

Row 2: Cast off 6(6,6)sts and purl to end.

Row 3: K2sts tog and knit to end.

Row 4: Cast off 5(6,6)sts and purl to end.

Row 5: As row 3.

Cast off rem 5(5,6)sts.

FRONT

Cast on and wk as for back until front is 18(20,22)rs shorter than back (measuring from top of shoulder)

SHAPE FRONT NECK RSF

K24(26,28)sts and put rem sts on a spare needle. Turn P2tog, and purl to end. Cont to dec 1 st at neck edge on the next 7(8,9)rs. 16(17,18) sts rem. Patt 5(6,7) rs.

SHAPE SHOULDER RSF

Row 1: Cast off 6(6,6)sts and knit to end.

Row 2: Purl to end.

Row 3: Cast off 5(6,6)sts and knit to end.

Row 4: As row 2.

Cast off rem 5(5,6)sts.

Return to the sts on the spare needle. Slip centre 12sts onto a st holder. RSF rejoin yarn to rem sts and complete to match first side reversing shapings.

SLEEVES

With 5mm needles cast on 33(35,37)sts and wk 2 ins in K1, P1 rib inc 7sts evenly along the last row. 40(42,44)sts.

Change to 5½mm needles and wk patt as follows AT THE TIME inc 1 st at each end of the 3rd and every foll 6th row.

Row 1: (RSF) Knit to end.

Row 2 and all foll alt rs unless row is stated: Purl to end.

Keeping to inc rep the last 2 rs for a further 8 rs.

Row 11: K21(22,23), M1, K2, M1, K21(22,23).

Row 13: K21(22,23), M1, K4, M1, K21(22,23)

Row 15: (inc row) K22(23,24), M1, K6, M1, K22(23,24).

Row 17: K22(23,24), M1, K8, M1, K22(23,24).

Row 19: K23(24,25), cast off next 8sts, K23(24,25).

Row 20: P22(23,24), T2, P22(23,24)

Row 21: Knit to end.

Row 22: Purl to end.

Keeping to inc rep the last 2 rs for a further 12 rs.

Keeping to inc rep patt from row 11 until 64(66,68)sts working inc sts into st.st.

Wk straight until sleeve measures 15 ins from beg, ending with a working side row.

SHAPE TOP RSF

Keeping to patt as set, cast off 2sts at the beg of the next 24 rs. Cast off rem 16(18,20)sts.

NECKBAND

(join right shoulder seam) RSF with 5mm needles pick up and knit around neck edge as follows:

18(20,22)sts evenly down left front neck edge, 12sts across centre front, 18(20,22)sts evenly up right front neck edge, 4sts down right back neck edge, 24(26,28)sts across centre back neck and 4sts up left back neck edge. 80(86,92)sts.

Wk 1 inch in K1, P1 rib.

RSF beg with a knit row st.st. 6 rs. Cast off loosely.

MAKE UP

Join left shoulder and neckband seams reversing neckband seam for roll down. Sew in sleeves thus: pin centre point of sleeve cast off edge to shoulder seam and stitch to body working from underarm to shoulder. Sew up side and sleeve seams. Sew in all loose threads.