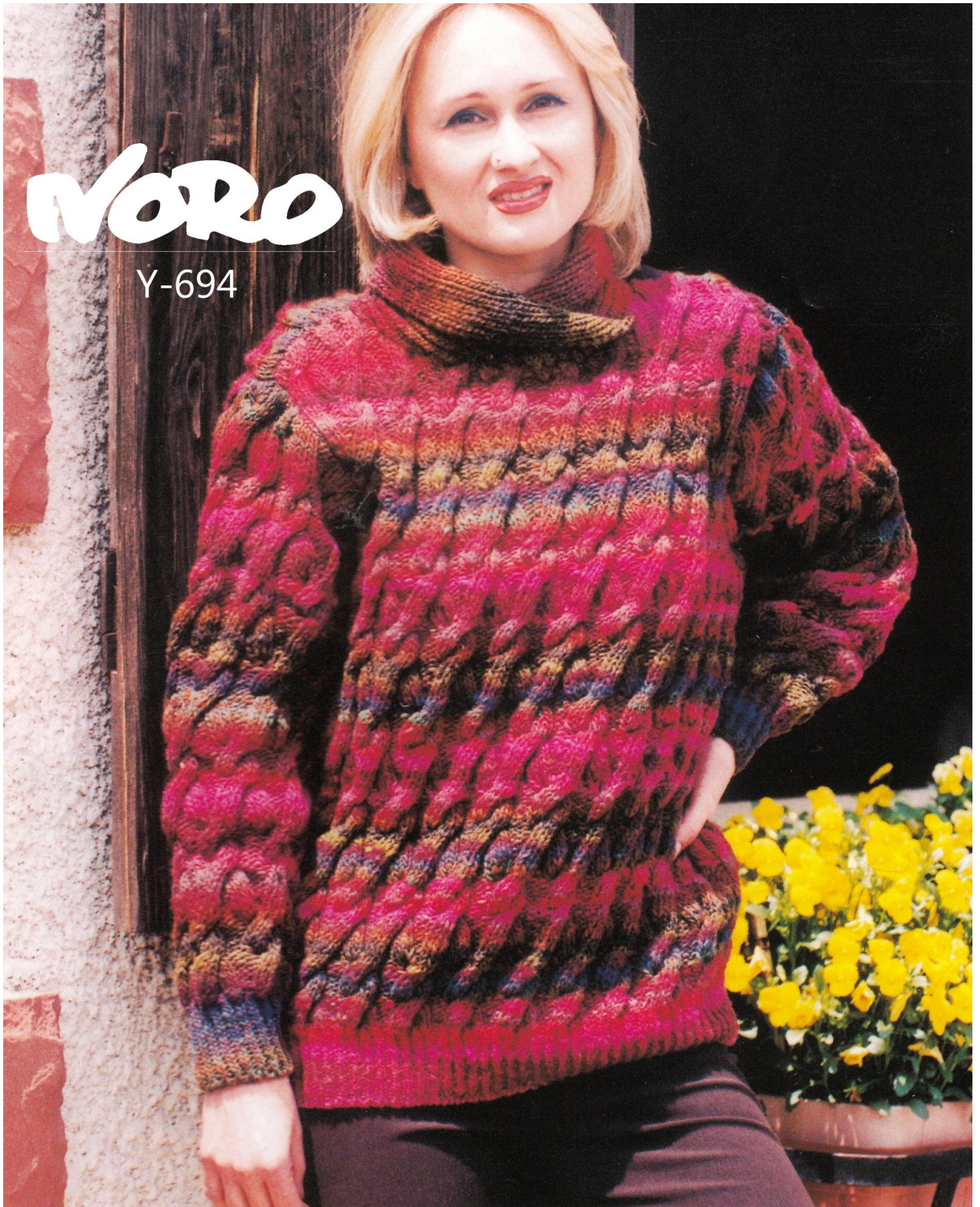


# NORO

Y-694



# NORO

## Y-694

Noro Kureyon



NO-Y694



**Y694**  
**NORO KUREYON**  
**LADIES CABLED SWEATER**

**ONE SIZE**

**To fit bust** 34/38 ins.  
86/96 cms.

**FINISHED**  
**MEASUREMENTS**

**WIDTH** 44 ins.  
112 cms

**LENGTH** 24 ins  
61 cms.

**SLEEVE SEAM**

17 ins  
43 cms

**MATERIALS**

1 pair each of no 5½mm (UK5-USA8) and 6mm (UK4-USA9) needles.

Cable Needle.

Noro Kureyon x 50grm balls  
Shade 115 15 balls

**TENSION**

Measured over patt using 6mm needles 28sts x 24rs = 10 cms (4 ins) square.

**BACK**

With 5½mm needles cast on 105sts and wk 3 ins in K1, P1, rib inc 50sts evenly along the last row. 155sts.

Change to 6mm needles and wk patt as follows:

**Row 1:** (RSF) P1, [K3, P3, K3, P3] 12 times, K3, P3, K3, P1.

**Row 2:** K all K sts and P all P sts to end.

Rep the last 2 rs twice more.

**Row 7:** P1, [C9B, P3] 12 times, C9B, P1.

**Row 8:** As row 2.

Rep rs 1 and 2 twice more.

**Row 13:** As row 7.

**Row 14:** As row 2.

Rep rs 1 and 2 four times more.

**Row 23:** P1, K3, [P3, C9B] 12 times, P3, K3, P1.

**Row 24:** As row 2.

Rep rs 1 and 2 twice more.

**Row 29:** As row 23.

**Row 30:** As row 2.

Rep rs 1 and 2 four times more.

Rep patt from row 7 until back measures 15½ ins from beg, ending with a wrong side row.

**SHAPE ARMHOLES RSF**

Cast off 8sts at the beg of the next 2 rs. Then dec 1 st at each end of the foll 16 rs. 107sts rem. Patt straight until back measures 23 ins from beg, ending with a wrong side row.

**SHAPE SHOULDER & BACK NECK**

**Row 1:** (RSF) Cast off 8sts patt until 18sts on right hand needle, turn and put rem sts on a spare needle.

**Row 2:** Wk2sts tog and patt to end.

12.

**Row 3:** Cast off 8sts and patt to end.

**Row 4:** As row 2.

Cast off rem 8sts.

Return to the sts on the spare needle. RSF rejoin yarn and cast off the centre 55sts and patt to end.

**SHAPE SHOULDER AND NECK**

**Row 1:** (WSF) Cast off 8sts and patt to end.

**Row 2:** Wk2sts tog and patt to end.

Rep the last 2 rs once more.

Cast off rem 8sts.

**FRONT**

Cast on and wk as for back until front is 18rs shorter than back (measuring from top of shoulder)

**SHAPE FRONT NECK RSF**

Patt 36sts and put rem sts on a spare needle. Turn P2tog, and patt to end. Cont to dec 1 st at neck edge on the next 11 rs. 24sts rem. Patt 1 row.

**SHAPE SHOULDER RSF**

**Row 1:** Cast off 8sts and patt to end.

**Row 2:** Patt to end.

Rep the last 2 rs once more.

Cast off rem 8sts.

Return to the sts on the spare needle. RSF rejoin yarn and cast off the centre 35sts. Complete 2nd side to match first side reversing shapings.

**SLEEVES**

With 5½mm needles cast on 39sts and wk 3 ins in K1, P1 rib inc 32sts evenly along the last row. 71sts.

Change to 6mm needles and wk patt as follows:

**Row 1:** (RSF) P1, [K3, P3, K3, P3] 5 times, K3, P3, K3, P1.

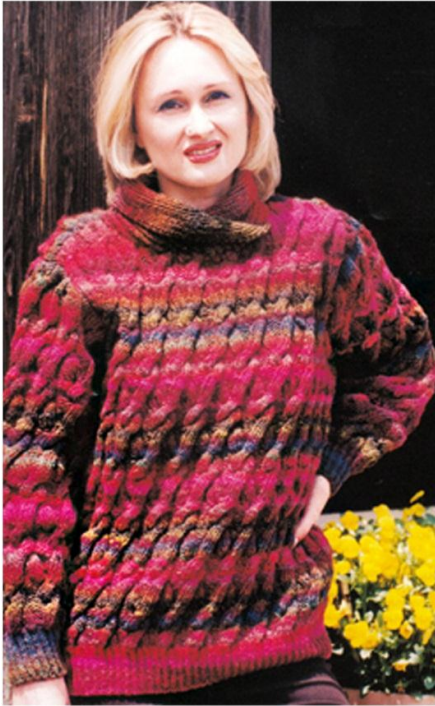
# NORO

## Y-694

Noro Kureyon



NO-Y694



**Row 2:** K all K sts and P all P sts to end.

Patt is now set. Cont in patt as for body AT THE SAME TIME inc 1 st at each end of the 3rd and every foll 4th row until 109sts, working inc sts into patt. Wk straight until sleeve measures 17 ins from beg, ending with a wrong side row.

### SHAPE TOP RSF

Cast off 4sts at the beg of the next 8 rs. Then cast off 3sts at the beg of the foll 6 rs. Then cast off 2sts at the beg of the foll 10 rs. Cast off rem 39sts.

### COLLAR

With 5<sup>1</sup>/<sub>2</sub>mm needles cast on 3sts and wk as follows:

**Row 1:** (RSF) K1, P1, K1.

**Row 2:** Inc 1 st into first st, rib as set to end.

**Row 3:** Rib to last st, inc 1 st into last st.

Rep the last 2 rs 4 times more

**Row 12:** As row 2.

**Row 13:** Rib to end.

Rep the last 2 rs for a further 38 rs. 33sts.

Wk straight in rib for 56 rs.

**Row 108:** (VVSF) Wk2sts tog and rib to end.

**Row 109:** Rib to end.

Rep the last 2 rs for a further 38 rs.

**Row 148:** As row 108.

**Row 149:** Rib to last 2sts, wk2sts tog.

Rep the last 2 rs 4 times more.

3sts rem.

Cast off.

### MAKE UP

Join shoulder seams. Sew on collar thus: pin centre point of shaped side of collar to centre back neck, pin cast on and cast off

edge to top of neck shaping and then stitch collar to neck edge overlapping at front. Sew in sleeves thus: pin centre point of sleeve cast off edge to shoulder seam and stitch to body working from underarm to shoulder. Sew up side and sleeve seams. Sew in all loose threads.