



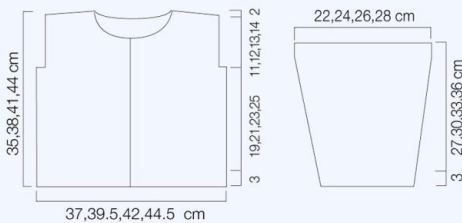
TRIXIE

YARN

Ella Rae CLASSIC

	A	B	C	D	Yrs
Chest	61	66	71	76	cm

Col. No.	Quantity x 100g balls			
col A 30	2	2	3	3
col B 71	1	1	1	1
col C 80	1	1	1	1



NEEDLES

- 1 pair 4.00mm needles (USA 6)(UK 8)
- 1 pair 4.50mm needles (USA 7)(UK 7)

ADDITIONAL REQUIREMENTS

4 buttons

TENSION

20 sts and 24 rows measured over 10 cm of St st using 4.50mm needles.
23 sts and 24 rows measured over 10 cm of pattern using 4.50mm needles.

LEFT FRONT

Using 4.00mm needles and col A, cast on 43(47,49,53) sts.

(RS) K1, * p1, k1; rep from * to end.

(WS) K1, * p1, k1; rep from * to end.

These 2 rows form Moss st patt.

Cont working in Moss st as set until length

measures 3cm, ending on a RS row, dec 1 st on last row worked, ending on a RS row, dec 1 st on last row worked.

[42(46,48,52) sts]

Change to 4.50mm needles.

(WS) Slip 5 sts onto a holder for front band, cont working on rem 37(41,43,47) sts. Refer to graph for col changes and patt placement, beg working on WS for first row.

Cont working in patt until 53(57,61,65) graph rows have been worked.

Shape armhole(RS) Cast off 3 sts, patt to end. [34(38,40,44) sts]

Cont working straight until 72(78,86,94) graph rows have been worked.

Shape front neck(WS) Cast off 2(2,2,3) sts, patt to end.

(RS) Patt to last 2 sts, k2tog.

(WS) P2tog, patt to end.

Rep last 2 rows twice more.

[26(30,32,35) sts]

Shape shoulder(RS) Cast off 8(9,10,11) sts, patt to end.

Patt 1 row.

(RS) Cast off 8(9,10,11) sts, patt to end.

Patt 1 row.

(RS) Cast off rem 10(12,12,13) sts.

RIGHT FRONT

Using 4.00mm needles and col A, cast on 43(47,49,53) sts.

Work 3cm in Moss st as for left front, ending on a WS row, dec 1 st on last row worked.

[42(46,48,52) sts]

Change to 4.50mm needles.

(RS) Slip 5 sts on to a holder for front band, cont working on rem 37(41,43,47) sts. Refer to graph for col changes and patt placement, beg working on RS for first row.

Cont working in patt until 53(57,61,65) graph rows have been worked.

Shape armhole(WS) Cast off 3 sts, patt to end. [34(38,40,44) sts]

Cont working straight until 72(78,86,94) graph rows have been worked.

Shape front neck(RS) Cast off 2(2,2,3) sts, patt to end.

(WS) Patt to last 2 sts, p2tog.

(RS) K2tog, patt to end.

Rep last 2 rows twice more.

[26(30,32,35) sts]

Shape shoulder(WS) Cast off 8(9,10,11) sts,

patt to end.

Patt 1 row.

(WS) Cast off 8(9,10,11) sts, patt to end.

Patt 1 row.

(WS) Cast off rem 10(12,12,13) sts.

BACK

Using 4.00mm needles and col A, cast on 75(79,85,89) sts.

(RS) K1, * p1, k1; rep from * to end.

(WS) K1, * p1, k1; rep from * to end.

These 2 rows form Moss st patt.

Cont working in Moss st as set until length measures 3 cm, ending on a WS row.

Change to 4.50mm needles.

Cont working in St st, beg with a RS row, until length measures same as fronts to armholes, ending on a WS row.

Shape armholes(RS) Cast off 3 sts at beg next 2 rows. [69(73,79,83) sts]

Cont working straight until length measures same as fronts to sh sh, ending on a WS row.

Shape shoulders and back neck(RS)

Cast off 8(8,9,9) sts, k22(23,24,25) sts, turn, leave rem sts on a holder.

Work each side of neck separately.

(WS) Cast off 3 sts, p to end.

(RS) Cast off 8(8,9,9) sts, k to end.

(WS) Cast off 3 sts, p to end.

(RS) Cast off rem 8(9,9,10) sts.

With RS facing, join yarn to rem sts, cast off 9(11,13,15) centre sts, k to end.

(WS) Cast off 8(8,9,9) sts, p to end.

(RS) Cast off 3 sts, k to end.

(WS) Cast off 8(8,9,9) sts, p to end.

(RS) Cast off 3 sts, k to end.

(WS) Cast off rem 8(9,9,10) sts.

SLEEVES

Using 4.00mm needles and col A, cast on 31(35,39,43) sts.

Work 3cm in Moss st as for back, ending on a WS row.

Change to 4.50mm needles.

Cont working in St st AT THE SAME TIME shape sides as foll: Inc 1 st each end foll row once, then 1 st each end foll

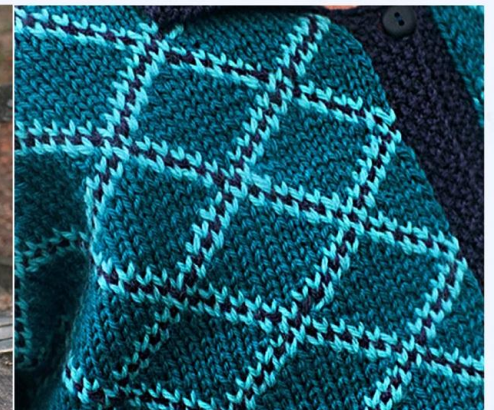
10th(12th,12th,14th) rows 4(4,5,5) times, then 1 st each end foll 8th(8th,0,0) row once.

[43(47,51,55) sts, 49(57,61,71) shaping rows]

Cont working straight until length (incl band) measures 30(33,36,39)cm,

ending on a WS row.

Cast off.



Please note: Some Ella Rae yarns, such as Amity and Amity Heathers have been discontinued. Please feel free to substitute Ella Rae Classic and Ella Rae Classic Heathers.

MAKING UP

Press pieces gently on WS, using a warm iron over a damp cloth.

Join shoulder seams. Centre sleeve into armhole and sew. Join side and sleeve seams.

Front Bands Left Band (button band)

With RS facing, using 4.00mm needles and col A, pickup 5 sts held at front for band.

Cont working in Moss st until length

(slightly stretched) measures same as left front to beg of neck shaping, ending on a WS row.

Cast off.

Mark positions for 4 buttons, the first to be placed 1 cm from bottom edge, the last to be placed 1 cm below neck shaping, the other 2 to be spaced evenly between.

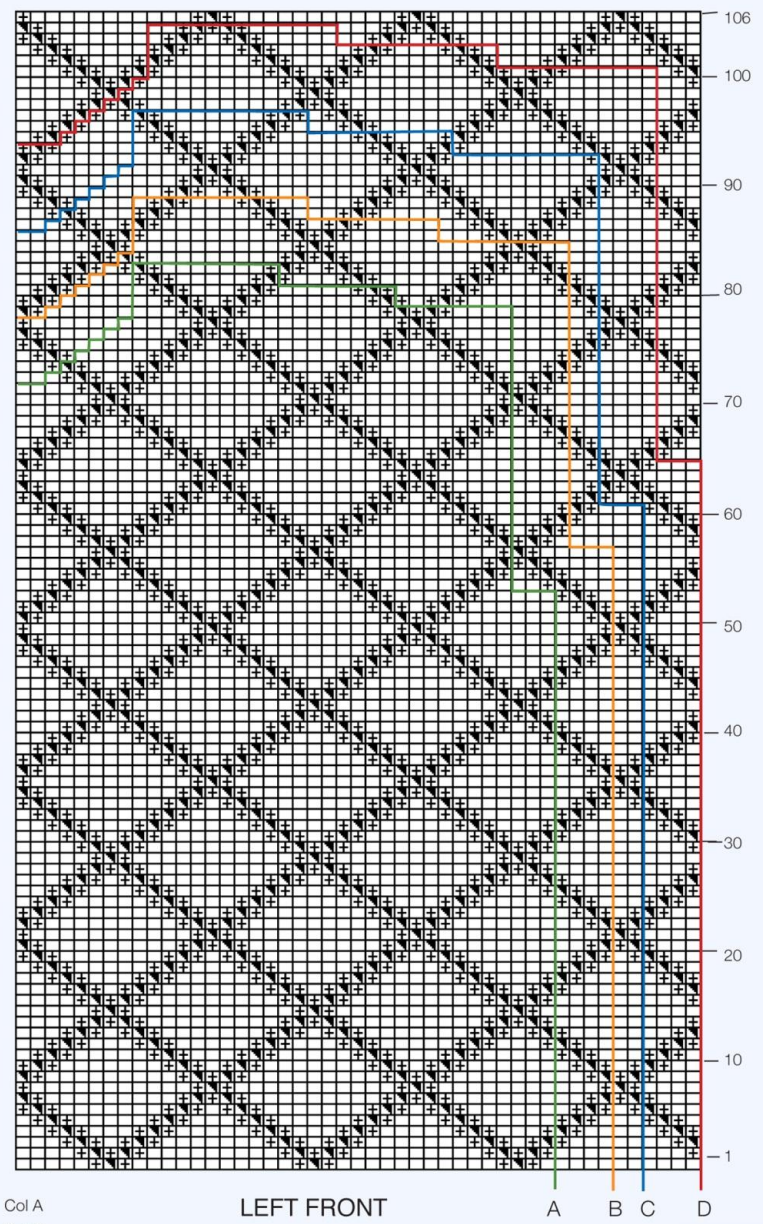
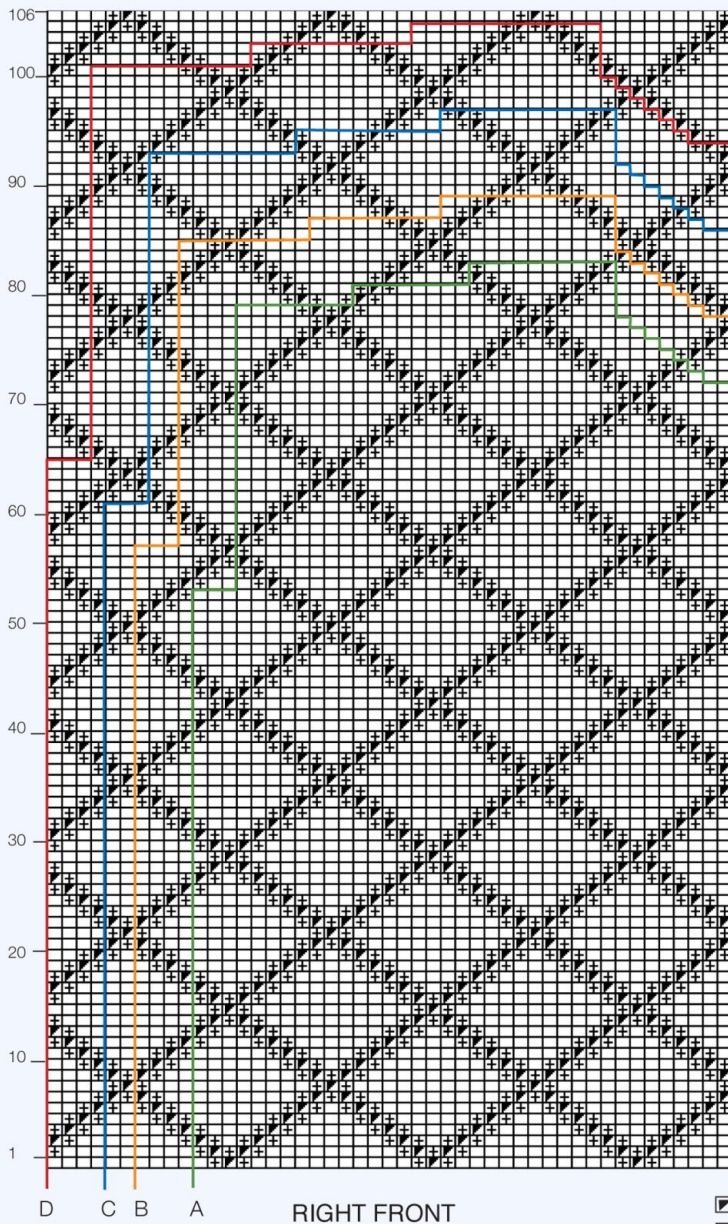
Right Band (buttonhole band) Work as for button band, making buttonholes to correspond with markers for button

placement as foll: (RS) K2, yf, k2tog, k1.

Collar With RS facing, using 4.00mm needles and col A, beg at edge of neck shaping, pickup and knit 13(15,17,19) sts along right front neck, 21(23,25,27) sts across back neck and 13(15,17,19) sts along left front finishing at edge of neck shaping. [47(53,59,65) sts]

Work 8cm in Moss st, ending on a WS row.

Cast off.



Please note: Some Ella Rae yarns, such as Amity and Amity Heathers have been discontinued. Please feel free to substitute Ella Rae Classic and Ella Rae Classic Heathers.