



## JACK AND JILL

### YARN

Ella Rae CLASSIC HEATHERS

	A	B	C	D	ys
Chest	56	66	71	76	cm

### Col. No. Quantity x 100g balls

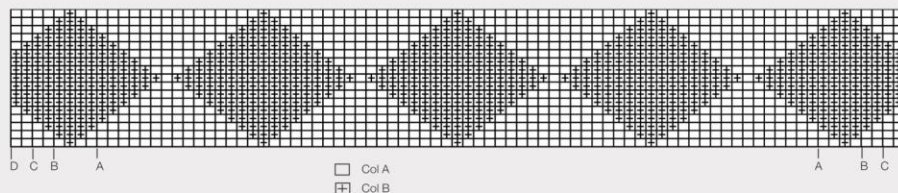
#### Version 1

col A 125	2	2	3	3
col B 116	1	1	1	1

#### Version 2

col A 103	2	2	3	3
col B 110	1	1	1	1

Approx 50cm of contrast colour yarn to darn crosses.



### NEEDLES

- 1 pair 4.00mm needles (USA 6)(UK 8)
- 1 pair 4.50mm needles (USA 7)(UK 7)
- 1 set 4.00mm circular needles (USA 6)(UK 8)
- 1 darning needle

### TENSION

20 sts and 24 rows measured over 10cm of St st using 4.50mm needles.

### FRONT

Using 4.00mm needles and col B, cast on 66(74,78,82) sts.

(RS) K2, \* p2, k2; rep from \* to end. Change to col A.

(WS) P2, \* k2, p2; rep from \* to end.

(RS) K2, \* p2, k2; rep from \* to end. These 2 rows form rib.

Cont working in rib until length measures 4 cm from beg, ending on a WS row, inc 1 st on last row worked.

[67(75,79,83) sts]

Change to 4.50mm needles. \*\*

Cont working in St st until length (incl band) measures 12.5(14.5,20.5,22.5)cm, ending on a WS row.

Refer to graph for colour changes and patt placement.

Work 17 graph rows.

Now cont working in col A until length (incl band) measures 20(22,28,30)cm, ending on a WS row.

**Shape armholes(RS)** Cast off 4(4,5,5) sts at beg next 2 rows. [59(67,69,73) sts]

Next row(RS)(dec) Dec 1 st each end next row, then 1 st each end every foll row 4(4,5,5) times. [49(57,57,61) sts]

Cont working straight until length (incl band) measures 24(27,34,37)cm, ending on a WS row.

**Shape front neck(RS)** K24(28,28,30) sts, turn, leave rem sts on a holder.

Work each side of neck separately. (WS) Dec 1 st at beg (neck edge) next row, then neck edge foll rows 8(7,5,4) times, then neck edge of foll alt rows 3(6,9,10) times. [12(14,13,15) sts, 16(21,25,26) shaping rows]

Cont working straight until length (incl band) measures 34(37,44,47)cm from beg, ending on a WS row.

**Shape shoulder(RS)** Cast off 4(5,4,5) sts at beg next row, then beg foll alt row once.

Purl 1 row.

Cast off rem 4(4,5,5) sts.

With RS facing, join yarn to rem sts, leave centre st on a holder.

Work second side to match first side, reverse all shapings.

### BACK

Work as for front to \*\*.

Cont working straight until length measures same as front to armhole shaping, ending on a WS row.

**Shape armholes(RS)** Cast off 4(4,5,5) sts at beg next 2 rows. [59(67,69,73) sts]

Next row(RS)(dec) Dec 1 st each end next row, then 1 st each end every foll row 4(4,5,5) times. [49(57,57,61) sts]

Cont working straight until length (incl band) measures same as front to sh sh, ending on a WS row.

**Shape shoulders and back neck(RS)** Cast off 4(5,4,5) sts, k15(17,18,20) sts, turn, leave rem sts on a holder.

Work each side of neck separately. (WS) Cast off 4(4,5,5) sts, p to end.

(RS) Cast off 4(5,4,5) sts, k to end. (WS) Cast off 3(4,4,5) sts, p to end.

(RS) Cast off rem 4(4,5,5) sts. With RS facing, join yarn to rem sts, cast off 11(13,13,11) centre sts, k to end.

(WS) Cast off 4(5,4,5) sts, p to end. (RS) Cast off 4(4,5,5) sts, k to end.

(WS) Cast off 4(5,4,5) sts, p to end. (RS) Cast off 3(4,4,5) sts, k to end.

(WS) Cast off rem 4(4,5,5) sts.

(WS) Cast off rem 4(4,5,5) sts.

(WS) Cast off rem 4(4,5,5) sts.

(WS) Cast off rem 4(4,5,5) sts.

(WS) Cast off rem 4(4,5,5) sts.

(WS) Cast off rem 4(4,5,5) sts.

(WS) Cast off rem 4(4,5,5) sts.

(WS) Cast off rem 4(4,5,5) sts.

(WS) Cast off rem 4(4,5,5) sts.

(WS) Cast off rem 4(4,5,5) sts.

(WS) Cast off rem 4(4,5,5) sts.

(WS) Cast off rem 4(4,5,5) sts.

(WS) Cast off rem 4(4,5,5) sts.

(WS) Cast off rem 4(4,5,5) sts.

(WS) Cast off rem 4(4,5,5) sts.

(WS) Cast off rem 4(4,5,5) sts.

(WS) Cast off rem 4(4,5,5) sts.

(WS) Cast off rem 4(4,5,5) sts.

(WS) Cast off rem 4(4,5,5) sts.

**Please note:** Some Ella Rae yarns, such as Amity and Amity Heathers have been discontinued. Please feel free to substitute Ella Rae Classic and Ella Rae Classic Heathers.