



## ELLA

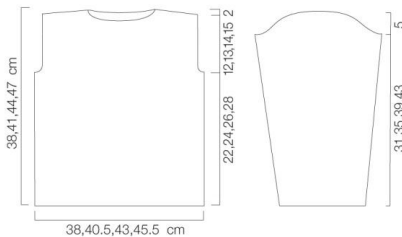
### YARN

Ella Rae AMITY

	3-4	5-6	7-8	9-10	yrs
Chest	61	66	71	76	cm

### Col. No. Quantity x 100g balls

Version 1	2	3	4	5	6
Version 1	2	3	4	5	6
Version 2	13	3	4	5	6



### NEEDLES

- 1 pair 4.50mm needles (USA 7)(UK 7)
- 1 pair 5.00mm needles (USA 8)(UK 6)
- 1 cable needle

### TENSION

20 sts and 25 rows measured over 10cm of Double Moss st using 5.00mm needles.  
23 sts and 25 rows measured over 10cm of Lace pattern using 5.00mm needles.  
Cable panel measures approx 5cm.

### Chalice Cable

- Row 1(RS)** K1, [p2,k2] 3 times, p2, k1.
- Row 2** P1, k2, [p2,k2] 3 times, p1.  
Rep last 2 rows twice more.
- Row 7** \* Slip next 4 sts onto cn and hold at back of work, k1, p2, k1 from left-hand

needle, then k1, p2, k1 from cn, slip next 4 sts onto cable needle and hold at front of work, k1, p2, k1 from left-hand needle, then k1, p2, k1 from cn.

**Row 8** As row 2.

**Row 9** As row 1.

**Row 10** As row 2.

Repeat these 10 rows.

### Double Moss St

**Row 1** K1, \* p1, k1; rep from \* to end.

**Row 2** P1, \* k1, p1; rep from \* to end.

**Row 3** As row 2.

**Row 4** As row 1.

Repeat these 4 rows.

### Bell Lace

**Row 1(RS)** K1, p1, k1, \* p1, yon, sl 1, k2tog, pssso, yfrn, [p1,k1] twice; rep from \* to end.

**Row 2** P1, k1, p1, \* k1, p3, [k1,p1] twice; rep from \* to end.  
Repeat last 2 rows twice more.

**Row 7** K1, k2tog, \* yfrn, [p1,k1] twice, p1, yon, sl 1, k2tog, pssso; rep from \* to last 8 sts, yfrn, [p1,k1] twice, p1, yon, sl 1, k1, pssso, k1.

**Row 8** P3, \* [k1,p1] twice, k1, p3; rep from \* to end.

Repeat last 2 rows twice more.

Repeat these 12 rows.

**C2B or C2F** (cross 2 back or front) knit into back (or front) of 2nd st on needle, then knit first st, slipping both sts off needle at the same time.

### FRONT

Using 5.00mm needles cast on 86(90,94,98) sts.

### Establishment rows

**Row 1(RS)** Work 27(29,31,33) sts in Double Moss St, work row 1 of Chalice Cable panel twice, work 27(29,31,33) sts in Double Moss St.

**Row 2(WS)** Work 27(29,31,33) sts in Double Moss St, work row 2 of Chalice Cable panel twice, work 27(29,31,33) sts in Double Moss St.

These 2 rows set pattern.

Cont working in pattern as set until length measures 20(22,24,26)cm from beg, ending on a WS row, **size A only** dec 3 sts on last row worked, **sizes B,C and D** inc 1(5,9) sts on last row worked. [83(91,99,107) sts]

Work 12 rows in Bell Lace pattern.

**Shape armholes(RS)** Cast off 3 sts, yon, sl 1, k2tog, pssso, yfrn, [p1,k1] twice, \* p1, yon, sl 1, k2tog, pssso, yfrn, [p1,k1] twice; rep from \* to end. [80(88,96,104) sts]

(WS) Cast off 3 sts, p3, [k1,p1] twice, \* k1, p3, [k1,p1] twice; rep from \* to last 5 sts, k1, p3, k1. [77(85,93,101) sts]

(RS) K2tog, p1, k1, \* p1, yon, sl 1, k2tog, pssso, yfrn, [p1,k1] twice; rep from \* to last 5 sts, p1, k1, p1, k2tog.

(WS) K2tog, p1, \* k1, p3, [k1,p1] twice; rep from \* to last 4 sts, k1, p1, k2tog.

(RS) K2tog, \* p1, yon, sl 1, k2tog, pssso, yfrn, [p1,k1] twice; rep from \* to last 7 sts, p1, yon, sl 1, k2tog, pssso, yfrn, p1, k2tog.

(WS) K2tog, \* p3, [k1,p1] twice, k1; rep from \* to last 5 sts, p3, k2tog. [69(77,85,93) sts]

(RS) \* P1, yon, sl 1, k2tog, pssso, yfrn, [p1,k1] twice; rep from \* to last 5 sts, p1, yon, sl 1, k2tog, pssso, yfrn, p1.

(WS) \* K1, p3, [k1,p1] twice; rep from \* to last 5 sts, k1, p3, k1.

\*\*\* (RS) \* [p1,k1] twice, p1, yon, sl 1, k2tog, pssso, yfrn; rep from \* to last 5 sts, [p1,k1] twice, p1.

(WS) \* [k1,p1] twice, k1, p3; rep from \* to last 5 sts, [k1,p1] twice, k1.

Rep last 2 rows twice more.

(RS) \* P1, yon, sl 1, k2tog, pssso, yfrn, [p1,k1] twice; rep from \* to last 5 sts, p1, yon, sl 1, k2tog, pssso, yfrn, p1.

(WS) \* K1, p3, [k1,p1] twice; rep from \* to last 5 sts, k1, p3, k1.

Rep last 2 rows twice more.

Cont working from \*\*\* to end in repeat until length measures 33(36,39,42)cm, ending on a WS row.

**Shape front neck(RS)** Patt 28(32,36,40) sts, turn, leave rem sts on a holder.

Work each side of neck separately.

(WS) Cast off 4(4,5,5) sts, patt to end. Patt 1 row.

(WS) Cast off 3(3,4,5) sts, patt to end. Patt 1 row.

(WS) Cast off 3(4,3,4) sts, patt to end.

**Shape shoulder(RS)** Cast off 6(7,8,9) sts at beg next row, then at beg foll alt row once.

Patt 1 row.  
Cast off rem 6(7,8,8) sts.  
With RS facing, cast off 13 centre sts, patt to end.

**Please note:** Some Ella Rae yarns, such as Amity and Amity Heathers have been discontinued. Please feel free to substitute Ella Rae Classic and Ella Rae Classic Heathers.



Patt 1 row.  
 (RS) Cast off 4(4,5,5) sts, patt to end.  
 Patt 1 row.  
 (RS) Cast off 3(3,4,5) sts, patt to end.  
 Patt 1 row.  
 (RS) Cast off 3(4,3,4) sts, patt to end.  
**Shape shoulder**(WS) Cast off 6(7,8,9) sts at beg next row, then beg foll alt row once.  
 Patt 1 row. Cast off rem 6(7,8,8) sts.

#### BACK

Using 5.00mm needles, cast on 75(81,85,89) sts.  
 Cont working in Double Moss St until length measures 20(22,24,26)cm from beg, ending on a WS row, inc 8(10,14,18) sts evenly across last row worked. [83(91,99,107) sts]  
 Work 12 rows in Bell Lace pattern.  
**Shape armholes**(RS) Cast off 3 sts, yon, sl 1, k2tog, pssso, yfrn, [p1,k1] twice, \* p1, yon, sl 1, k2tog, pssso, yfrn, [p1,k1] twice; rep from \* to end. [80(88,96,104) sts]  
 (WS) Cast off 3 sts, p3, [k1,p1] twice, \* k1, p3, [k1,p1] twice; rep from \* to last 5 sts, k1, p3, k1. [77(85,93,101) sts]  
 (RS) K2tog, p1, k1, \* p1, yon, sl 1, k2tog, pssso, yfrn, [p1,k1] twice; rep from \* to last 5 sts, p1, k1, p1, k2tog.  
 (WS) K2tog, p1, \* k1, p3, [k1,p1] twice; rep from \* to last 4 sts, k1, p1, k2tog.  
 (RS) K2tog, \* p1, yon, sl 1, k2tog, pssso, yfrn, [p1,k1] twice; rep from \* to last 7 sts, p1, yon, sl 1, k2tog, pssso, yfrn, p1, k2tog.  
 (WS) K2tog, \* p3, [k1,p1] twice, k1; rep from \* to last 5 sts, p3, k2tog. [69(77,85,93) sts]  
 (RS) \* P1, yon, sl 1, k2tog, pssso, yfrn, [p1,k1] twice; rep from \* to last 5 sts, p1, yon, sl 1, k2tog, pssso, yfrn, p1.  
 (WS) \* K1, p3, [k1,p1] twice; rep from \* to last 5 sts, k1, p3, k1.  
 \*\*\* (RS) \* [p1,k1] twice, p1, yon, sl 1, k2tog, pssso, yfrn; rep from \* to last 5 sts, [p1,k1] twice, p1.  
 (WS) \* [k1,p1] twice, k1, p3; rep from \* to last 5 sts, [k1,p1] twice, k1.  
 Rep last 2 rows twice more.  
 (RS) \* P1, yon, sl 1, k2tog, pssso, yfrn, [p1,k1] twice; rep from \* to last 5 sts, p1, yon, sl 1, k2tog, pssso, yfrn, p1.

#### ELLA continued

(WS) \* K1, p3, [k1,p1] twice; rep from \* to last 5 sts, k1, p3, k1.  
 Rep last 2 rows twice more.  
 Cont working from \*\*\* to end in repeat until length measures same as front to sh sh, ending on a WS row.  
**Shape shoulders and back neck**(RS)  
 Cast off 6(7,8,9) sts, patt 22(25,28,31) sts, turn, leave rem sts on a holder.  
 (WS) Cast off 5(5,6,7) sts, patt to end.  
 (RS) Cast off 6(7,8,9) sts, patt to end.  
 (WS) Cast off 5(6,6,7) sts, patt to end.  
 (RS) Cast off rem 6(7,8,8) sts.  
 With RS facing, cast off 13 centre sts, patt to end.  
 (WS) Cast off 6(7,8,9) sts, patt to end.  
 (RS) Cast off 5(5,6,7) sts, patt to end.  
 (WS) Cast off 6(7,8,9) sts, patt to end.  
 (RS) Cast off 5(6,6,7) sts, patt to end.  
 (WS) Cast off rem 6(7,8,8) sts.

#### SLEEVES

Using 5.00mm needles, cast on 42(46,50,54) sts.  
**Establishment rows**  
**Row 1**(RS) Work 13(15,17,19) sts in Double Moss st, work row 1 of Chalice Cable Panel, work 13(15,17,19) sts in Double Moss st.  
**Row 2**(WS) Work 13(15,17,19) sts in Double Moss st, work row 2 of Chalice Cable Panel, work 13(15,17,19) sts in Double Moss st.  
 These 2 rows set patt.  
 Cont working in patt as set, AT THE SAME TIME **shape sides** as foll: Inc 1 st each end foll 12th(14th,14th,16th) rows, 6(6,4,4) times, then on foll 0(0,16th,18th) rows, 0(0,2,2) times.  
 [54(58,62,66) sts, 72(84,88,100) shaping rows]  
 Cont working straight until length measures 31(35,39,43)cm, ending on a WS row.  
**Shape sleeve top**(RS) Cast off 4 sts at beg next 2 rows, then 3 sts at beg next 6 rows. [28(32,36,40) sts]  
 Dec 1 st each end next 4 rows.  
 [20(24,28,32) sts]  
 Cast off rem sts.

#### MAKING UP

Press pieces gently on WS, using a warm iron over a damp cloth.

Join right shoulder seam.

**Collar** With RS facing, using 4.50mm needles pickup and knit 16(17,18,19) sts along left side front neck, 14(15,16,17) sts across centre front, 16(17,18,19) sts along right side front neck, 13(14,15,16) sts along right side back neck, 14(15,16,17) sts across centre back neck and 13(14,15,16) sts along left side back neck.

[86(92,98,104) sts]

#### Double Twisted Rib

**Row 1**(WS) K2, \* p4, k2; rep from \* to end.

**Row 2**(RS) P2, \* C2B, C2F, p2; rep from \* to end.

These 2 rows form pattern repeat.

Cont working in twisted rib patt until length measures 8cm, ending on a WS row.

Cast off.

Join left shoulder and collar seam.

Join side seams. Join sleeve seams.

Centre sleeve into armhole and sew into place.

