



Version 1



Version 2

ELLEN

YARN

Ella Rae AMITY and AMITY HEATHERS

	5-6	7-8	9-10	11-12	yrs
Chest	66	71	76	81	cm

Col. No. Quantity x 100g balls

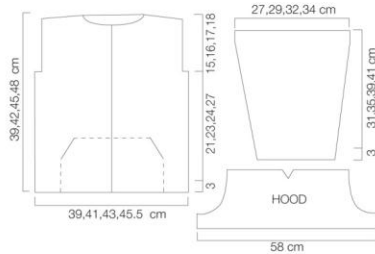
Version 1

col A 11 3 4 4 5

Version 2

col A 116 2 3 3 4

col B 112 1 1 1 1



NEEDLES

- 1 pair 4.50mm needles (USA 7)/(UK 7)
- 1 pair 5.00mm needles (USA 8)/(UK 6)
- 1 4.50mm circular needle (USA 7)/(UK 7)

ADDITIONAL REQUIREMENTS

5 buttons

TENSION

18 sts and 24 rows measured over 10 cm of St st using 5.00mm needles.

Colour Sequence (Version 2)

Working in St st throughout.
Work 2 rows col B, 4 rows col A.

BACK

Using 4.50mm needles and col A, cast on 70(74,78,82) sts.

Row 1(RS) K2, * p2, k2; rep from * to end.

Row 2(WS) P2, * k2, p2; rep from * to end. These 2 rows form rib.

Work 3 cm in rib, ending on a WS row.

Change to 5.00mm needles.

Cont working in St st and col sequence until length (incl band) measures 24(26,28,30)cm, ending on a WS row.

Shape armholes(RS) Cast off 3 sts at beg next 2 rows. [64(68,72,76) sts] Cont working straight until length (incl band) measures 39(42,45,48)cm from beg, ending on a WS row. Cast off.

Pocket Lining (Make 2)

Using 5.00mm needles and col A, cast on 16(16,18,18) sts.

Work 9 rows in St st.

Break off yarn and leave sts on a holder.

LEFT FRONT

Using 4.50mm needles and col A, cast on 34(34,38,38) sts.

Work 3 cm in rib as for back, ending on a WS row, inc 0(2,0,2) sts on last row worked. [34(36,38,40) sts] Change to 5.00mm needles.

Cont working in St st and col sequence until length (incl band) measures 9 cm, ending on a RS row. **

Divide for pocket Next row(WS)

P18(18,20,20) sts, turn, leave rem sts on a spare needle for pocket back, work on these 18(18,20,20) sts for pocket front.

POCKET FRONT Shape edge(RS) Dec 1 st at beg next row, then beg foll 4th rows,

5 times more. [12(12,14,14) sts]

Break off yarn and leave sts on a holder.

POCKET BACK With WS facing, using 5.00mm needles, rejoin yarn and p across 16(16,18,18) sts of one pocket lining, then with WS facing, p across 16(18,18,20) sts on spare needle for pocket back.

[32(34,36,38) sts]

St st 20 rows.

Joining row Next row(RS) K 22(24,24,26)

sts, place pocket front sts in front of rem 10(10,12,12) sts of pocket back. Insert needle into next st of front and next st of back at the same time, k sts tog, k the next 9(9,11,11) sts of front and back tog, k last 2 sts. [34(36,38,40) sts]

Cont working in St st and col sequence until length (incl band) measures same as back to armhole shaping, ending on a WS row.

Shape armhole(RS) Cast off 3 sts, k to end. [31(33,35,37) sts]

Cont working straight until length (incl band) measures 33(36,39,42) cm, ending on a RS row.

Shape neck(WS) Cast off 2(3,4,5) sts at beg next row. [29(30,31,32) sts]

Knit 1 row.

(WS) Dec 1 st at beg (neck edge) next row, then on foll alt rows, 5 times.

[23(24,25,26) sts]

Cast off rem sts.

RIGHT FRONT

Work as for left front to **.

Divide for pocket Next row(WS)

P 16(18,18,20) sts, leave rem sts on a spare needle for pocket front.

With WS facing, p across 16(16,18,18) sts of other pocket lining, turn and work on these 32(34,36,38) sts for pocket back.

POCKET BACK St st 20 rows.

Break off yarn and leave sts on a holder.

POCKET FRONT With WS facing, using 5.00mm needles, rejoin yarn to pocket front.

Shape edge(WS) Dec 1 st at beg next row, p across remainder of pocket front sts.

Dec 1 st at pocket edge of foll 4th rows, 5 times more. [12(12,14,14) sts]

Joining row K 2, place first 10(10,12,12) sts of pocket back behind rem 10(10,12,12) sts of pocket front. Insert needle into next st of front and next st of back at the same time,

Please note: Some Ella Rae yarns, such as Amity and Amity Heathers have been discontinued. Please feel free to substitute Ella Rae Classic and Ella Rae Classic Heathers.



k next 9(9,11,11) sts front and back tog, k to end. [34(36,38,40) sts]
Cont working in St st and col sequence until length (incl band) measures same as back to armhole shaping, ending on a RS row.

Shape armhole(WS) Cast off 3 sts, p to end. [31(33,35,37) sts]
Cont working straight until length (incl band) measures 33(36,39,42)cm, ending on a WS row.

Shape neck(RS) Cast off 2(3,4,5) sts at beg next row.

Purl 1 row.

(RS) Dec 1 st at beg (neck edge) next row, then on foll alt rows, 5 times.

[23(24,25,26) sts]

Cast off rem sts.

SLEEVES

Using 4.50mm needles and col A, cast on 38(38,42,42) sts.

Work 3 cm in rib as for back, ending on a WS row.

Change to 5.00mm needles.

Cont working in St st and col sequence, AT THE SAME TIME shape sides as foll: Inc 1 st each end foll 9th rows 0(0,0,8) times, then every foll 11th row, 0(6,7,2) times, then every foll 13th row, 5(1,1,0) times. [48(52,58,62) sts 65(79,90,94) shaping rows]

Cont working straight until length (incl band) measures 34(38,42,44) cm, ending on a WS row.

Cast off.

HOOD

Using 5.00mm needles and col B, cast on 104 sts.

Work 22 rows in St st and col sequence. Next row(RS)(dec) K2tog, k to last 2 sts, k2tog.

P 1 row.

Rep last 2 rows twice more, then RS row again.

Work 3 rows.

Next row(RS)(dec) K2tog, k to last 2 sts, k2tog.

Rep last 4 rows twice more.

P 1 row. (90 sts)

Place a marker (coloured thread) at centre of last row.

Shape back of hood Next row(RS)(dec)

K to within 2 sts of marker, k2tog, sl 1, k1,

pss0, k to end.

P 1 row.

Rep last 2 rows once more.

(RS) K to within 2 sts of marker, k2tog, sl 1, k1, pss0, k to end.

(WS) P to within 2 sts of marker, p2tog tbi, p2tog, p to end.

Rep last 2 rows, twice more.

Cast off.

MAKING UP

Press pieces gently on WS, using a warm iron over a damp cloth.

Join shoulder seams. Join side seams.

Sew sleeve seam. Centre sleeve into armhole and sew.

Sew pocket linings to inside of fronts.

Pocket tops With RS facing, using 4.50mm needles and col A, pickup and k 22 sts across top of pocket. Beg with a WS row, work 3 rows in k2, p2 rib, as for back.

Cast off in rib. Sew rib to front.

Rep for other pocket top.

Attach hood Fold cast off edge in half and join for back seam, attach back seam to centre back. Sew hood into place along seams, beg and ending at front edges.

Front bands With RS facing, using 4.50mm circ needle and col A, pickup and k 58(62,66,70) sts along right front edge from cast on to beg of neck shaping, 102 sts across hood and 58(62,66,70) sts along left front from beg of neck shaping to cast on edge. [218(226,234,242) sts]
(WS) P2, * k2, p2; rep from * to end.

(RS) K2, * p2, k2; rep from * to end.

Rep WS row once more.

(RS)(buttonhole row) Rib 3, * yf, k2tog, rib 12(12,14,14) sts; rep from * 4 times more, rib to end.

Work 3 more rows in rib.

(RS) Cast off in rib.

Sew buttons to correspond with buttonholes.