

Fair Isle Boot Toppers



Finished Measurements

Circumference 12" / 30.5cm

Cuff length 5 1/2" / 14cm (shown over boot)

Total length 9 1/2" / 24cm

Yarn & Notions

1 ball each of Chadwick in #2 Blush, #9 Mystic and #1 Indian Paintbrush

One set (5) size 8 (5 mm) double-pointed needles (DPNs)

Stitch marker

Gauge

21 sts and 26 rnds = 4" / 10 cm over fair isle pattern in the round using size 8 (5 mm) needles.



Boot Topper

(make 2)

With Blush, cast on 60 sts. Distribute evenly over dpns. Join for knitting in the rnd, taking care not to twist stitches. Place marker for beg of rnd.

[Knit 1 rnd, purl 1 rnd] twice.

Next rnd Work Rnd 1 and inc 4 sts evenly around - 64 sts.

Work Rnds 2-31 of chart pattern.

With Blush, k 1 rnd, p 1 (turning) rnd, k 1 rnd.

Next rnd *K1, p1; rep from * to marker.

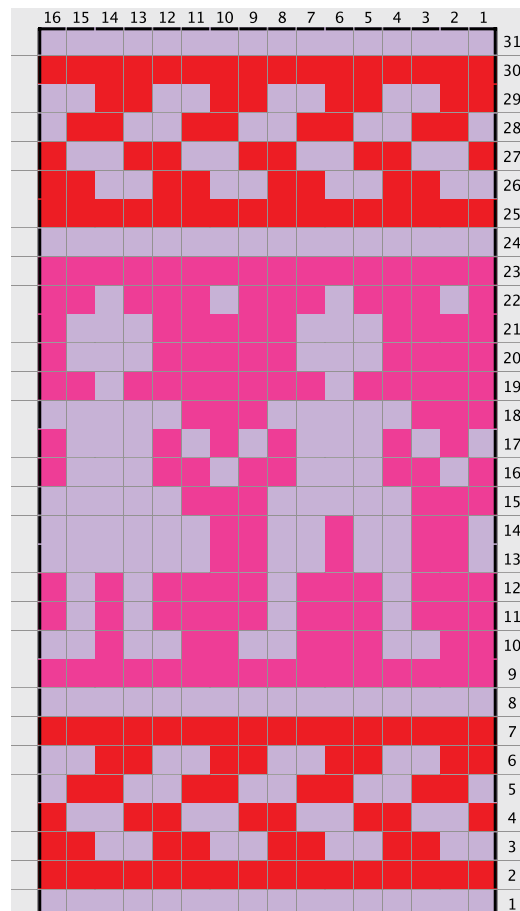
Work in k1, p1 rib as established until rib section measures 4"/10cm. Bind off in rib.

Finishing

Weave in ends. Block to measurements.

How to wear

Turn boot topper inside out. Pull onto leg with ribbing at bottom. Fold fair isle section over top of boot at turning rnd.



Legend:
 knit
 knit stitch