



CHADWICK

FAIR ISLE BOOT TOPPERS

By Tanis Gray



FINISHED MEASUREMENTS

Circumference: 12"/30.5cm.

Cuff length (shown over boot): 5½"/14cm.

Total length: 9½"/24cm.

YARN & NOTIONS

1 x 100g ball of Juniper Moon Farm **Chadwick** in color #02 Blush.

1 x 100g ball of Juniper Moon Farm **Chadwick** in color #09 Mystic.

1 x 100g ball of Juniper Moon Farm **Chadwick** in color #01 Indian Paintbrush.

One set (5) size US 8 (5mm) double-pointed needles.

Stitch marker.

GAUGE

21 sts and 26 rnds = 4"/10 cm over fair isle pattern in the round using size US 8 (5mm) needles.

BOOT TOPPER (MAKE 2)

With Blush, cast on 60 sts. Distribute evenly over dpns. Join for knitting in the rnd, taking care not to twist stitches. Place marker for beginning of rnd.

[Knit 1 rnd, purl 1 rnd] twice.

Next rnd: Work Rnd 1 and increase 4 sts evenly around—64 sts.

Work Rnds 2-31 of chart pattern.

With Blush, k 1 rnd, p 1 (turning) rnd, k 1 rnd.

Next rnd: *K1, p1; repeat from * to marker.

Work in k1, p1 rib as established until rib section measures 4"/10cm.

Bind off in rib.

FINISHING

Weave in ends. Block to measurements.

HOW TO WEAR

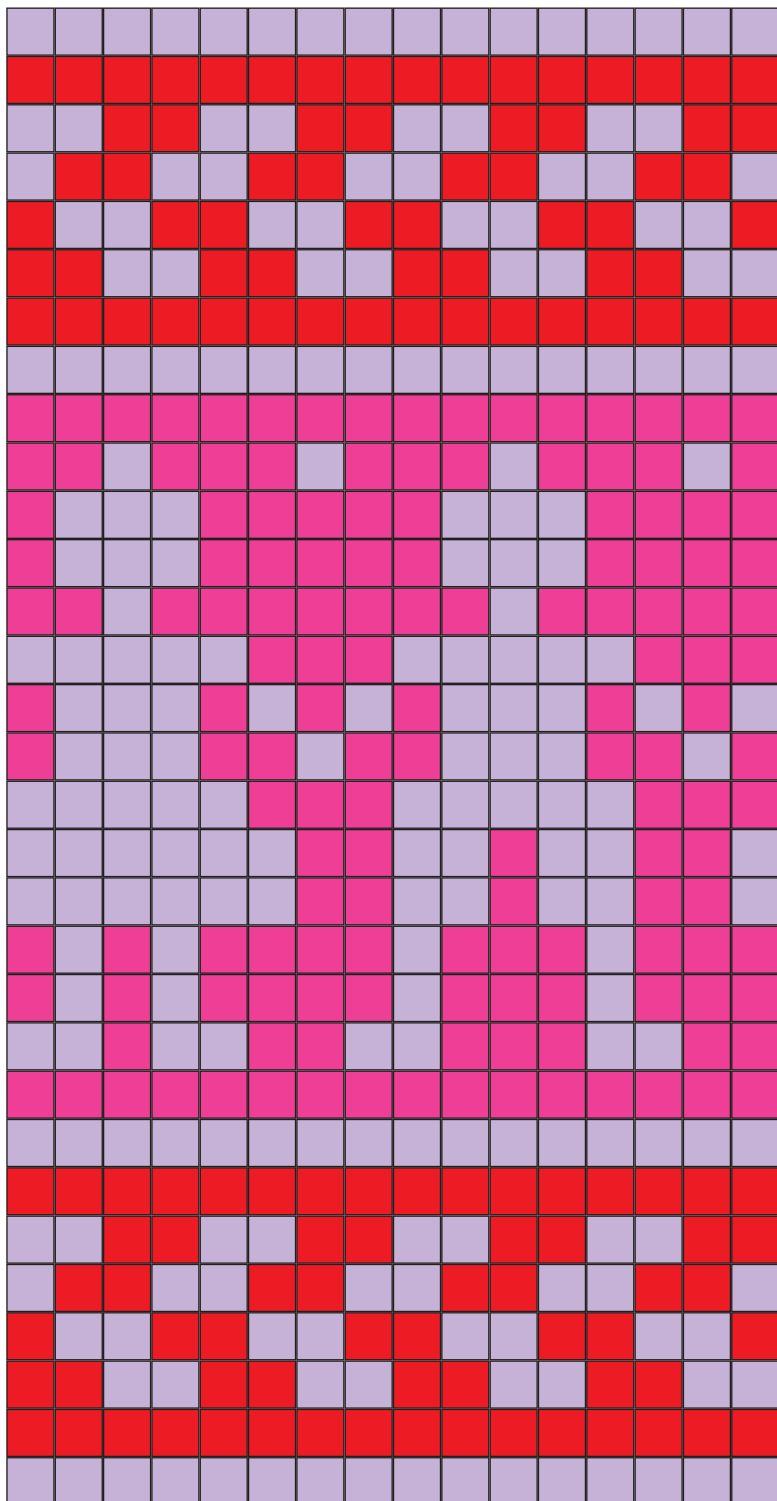
Turn boot topper inside out. Pull onto leg with ribbing at bottom. Fold fair isle section over top of boot at turning rnd.

ABBREVIATIONS

beg beginning
k knit
p purl
rnd(s) round(s)

RS right side
st(s) stitch(es)
tog together
WS wrong side

16 15 14 13 12 11 10 9 8 7 6 5 4 3 2 1



31
30
29
28
27
26
25
24
23
22
21
20
19
18
17
16
15
14
13
12
11
10
9
8
7
6
5
4
3
2
1

□ knit

16 15 14 13 12 11 10 9 8 7 6 5 4 3 2 1

Copyright © 2011 KnittingFever, Inc. All rights reserved. 315 Bayview Avenue, Amityville, New York 11701. United States of America. knittingfever.com. The knitwear designs in this publication are intended for personal use only and may not be knitted for sale. This publication is protected by international copyright laws and is sold on the condition that it is used for non-commercial purposes. No part of this publication may be copied or reproduced by any means without written permission of the publisher. Measurements, gauge, and other information, are included as a guideline. If you have any questions about the projects included in this publication, please contact us at knittingfever.com.

JMF1-05

Find Juniper Moon Farm on social media:

