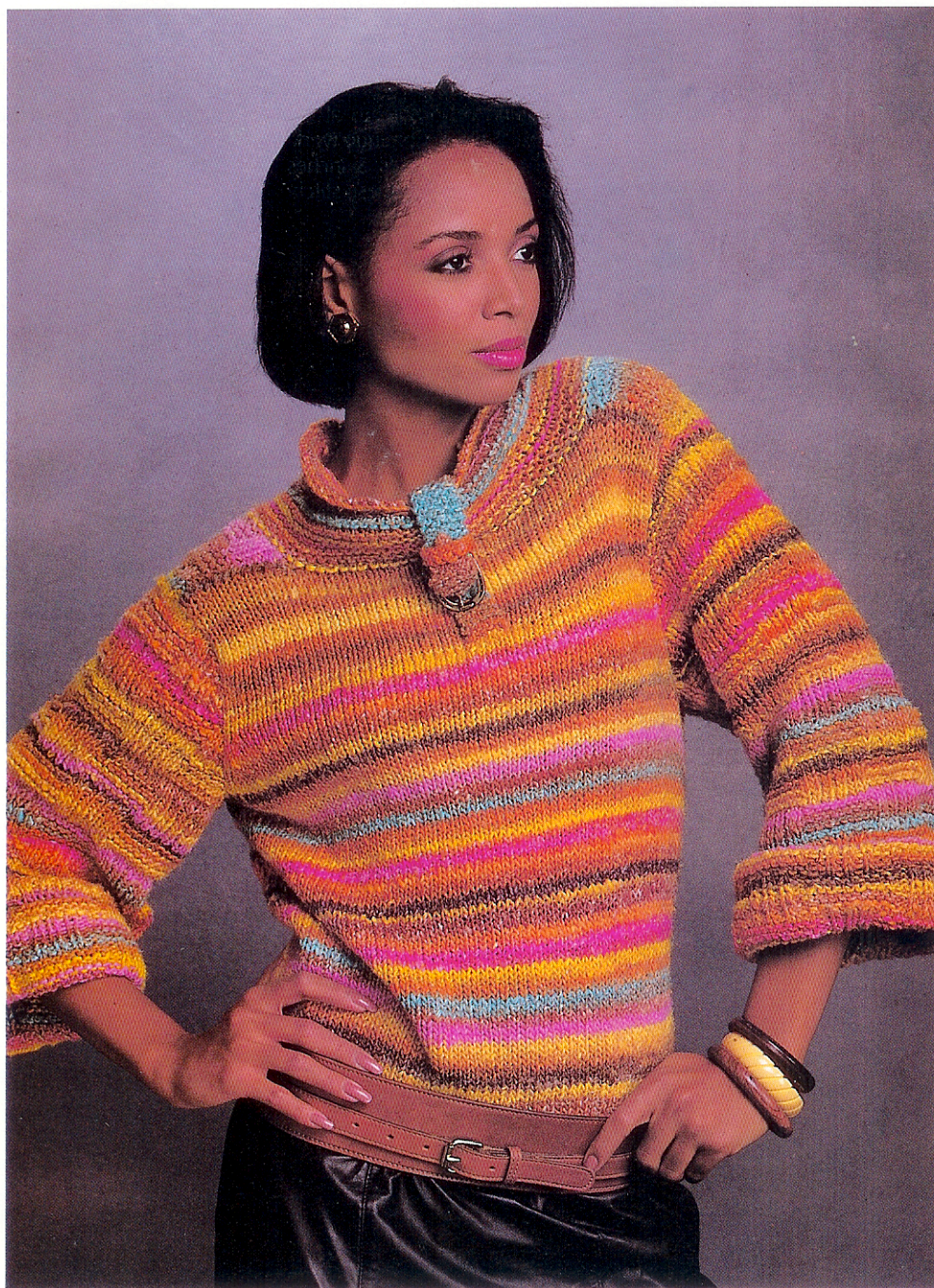


# SWEATER OF THE WEEK™



## Week #43

**Yarn:** 12 (12, 12) skeins Knitting  
Fever's Tsubaki Color 161

### Yarn Substitutions

Yarn	Needles
(NR-K) Kosumosu	Same
(83N-49) Yamato	Same
Sakura	Same
Asuka	Same
Pierre Cardin #35	Same
Dorothee Bis	Same
Kid Mohair	Same

**Needles:** #9 (or whatever size  
is necessary to obtain gauge)  
#9 (16") circular needle

**Gauge:** 4 sts. and 6 rows = 1"  
worked in stockinette stitch

**Notions:** 1 brass buckle  
1-1½" wide

**Sizes:** 33 (35, 37) finished  
measurement is about 2"  
larger





**Pattern for Sleeve:** (multiple of 18 + 1)  
**Rows 1, 3, 5 and 7,:** P1, \*K1, P1, K2, P9,  
K2, P1, K1, P1\*

**Rows 2, 4, 6, and 8:** K1, \*P1, K1, P13,  
K1, P1, K1\*

**Rows 9, 11, 13, and 15:** \*P5, K2, P1,  
K1, P1, K1, P1, K2, P4\*, P1

**Rows 10, 12, 14 and 16:** \*P7, K1, P1,  
K1, P1, K1, P6\*, P1

**Back:** Cast on 70 (74, 78) sts. Work in garter stitch (all knit) for 8 rows. Change to stockinette stitch and work straight for 13" or desired length. Bind off 6 (4, 4) stitches at the beginning of the next 2 rows. Work straight until armhole measures 6½ inches. Bind off all stitches straight across.

**Front:** Same as back.

**Sleeves:** Cast on 73 sts. and work in garter stitch for 8 rows. Start pattern. Work in pattern for 17 inches or desired length. **ARMHOLE:** Bind off 6 sts. at the beginning of the next 2 rows. Decrease 1 stitch each end every fourth row 10 times. Work straight until cap measures 6 inches. Bind off 5 stitches at the beginning of the next 2 rows. Continue working in pattern until piece measures 5 inches above the last set of bind-offs. Slip these stitches onto a holder.

**Tab:** Cast on 5 sts. and work up a strip 9 inches long working in garter stitch. Make a second strip the same way, 5 inches long. Attach buckle to 9 inch strip.

**Finishing:** Sew sweater together. **COLLAR:** With circular needle, pick up all stitches around

neckline. Work collar in garter stitch as follows: Place a marker at the beginning of first row. Knit all stitches to marker, work the next round in purl stitches. Work collar in this manner alternating from knit to purl on each round. When collar measures 8 inches, bind off all stitches across row. Attach 9 inch tab to inside edge at base of collar. Attach 5 inch tab 5 inches below neckline at center front of sweater.

