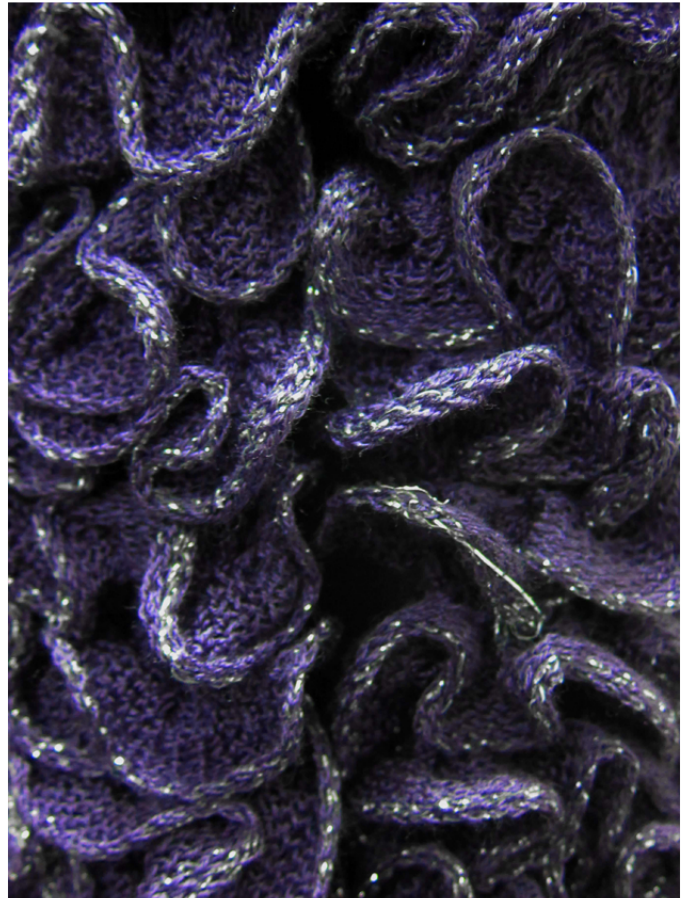


Sparkle Scarf Pattern



1. Spread yarn open to lie flat. **2a&b.** Cast on 6 sts by inserting needle into open spaces along top edge of yarn. **3.** Knit every st by leaving approximately 1.5 in. between sts. **4.** Bind off loosely. Weave in ends. Finished product approximately 2" wide x 70" long. **Materials:** 1 skein Sparkle (Euro Yarns), 4-6 US needle

Copywrited by KFI