

## DESIGN SEVENTEEN

# Boys Zipped Cardigan

Picture page 17

### Left Front

**Using 2.75mm (US2) needles** cast on 40 [43:46:49:52:54]sts and work 17 rows in st-st.

**18th Row:** Knit (for turn back row).

Commencing with 1st row of st-st work 17 rows.

**36th Row:** P4, (m1, P1) 8 times, m1, (P8, m1) 3 [3:4:4:5] times, P4 [7:2:5:8:2]: 5:8:2]. 52 [55:59:62:65:68]sts.

**Change to 3.25mm (US3) needles** and proceed as follows:-

**1st Row:** K4 [7:2:5:8:2], (P1, K8) 3 [3:4:4:4:5] times, P3, C4B, P4, C4F, P3, K3.

**2nd Row:** K6, P4, K4, P4, K3, (P8, K1) 3 [3:4:4:4:5] times, P4 [7:2:5:8:2].

**3rd Row:** K4 [7:2:5:8:2], (P1, K8) 3 [3:4:4:4:5] times, P2, T3B, T3F, P2, T3B, T3F, P2, K3.

**4th Row:** K5, (P2, K2) 4 times, (P8, K1) 3 [3:4:4:4:5] times, P4 [7:2:5:8:2].

**5th Row:** K4 [7:2:5:8:2], (P1, K8) 3 [3:4:4:4:5] times, P1, (T3B, P2, T3F) twice, P1, K3.

**6th Row:** K4, P2, K4, P4, K4, P2, K1, (P8, K1) 3 [3:4:4:4:5] times, P4 [7:2:5:8:2].

**7th Row:** K4 [7:2:5:8:2], (P1, K8) 3 [3:4:4:4:5] times, P1, K2, P4, C4B, P4, K2, P1, K3.

**8th Row:** As 6th row.

**9th Row:** K4 [7:2:5:8:2], (P1, K8) 3 [3:4:4:4:5] times, P1, K2, P4, K4, P4, K2, P1, K3.

**10th Row:** As 6th row.

**11th Row:** As 7th row.

**12th Row:** As 6th row.

**13th Row:** K4 [7:2:5:8:2], (P1, K8) 3 [3:4:4:4:5] times, P1, (T3F, P2, T3B) twice, P1, K3.

**14th Row:** As 4th row.

**15th Row:** K4 [7:2:5:8:2], (P1, K8) 3 [3:4:4:4:5] times, P2, T3F, T3B, P2, T3F, T3B, P2, K3.

**16th Row:** As 2nd row.

**17th Row:** As 1st row.

**18th Row:** As 2nd row.

**19th Row:** As 3rd row.

**20th Row:** As 4th row.

**21st Row:** K4 [7:2:5:8:2], (P1, K8) 3 [3:4:4:4:5] times, P2, (K2, P2) twice, K2, slip last 6sts worked onto cable needle and wrap yarn 4 times anti clockwise round these 6sts, then slip the 6sts back onto right hand needle, P2, K2, P2, K3.

**22nd Row:** As 4th row.

**23rd Row:** As 15th row.

**24th Row:** K6, P4, K4, P4, K3, (P8, K1) 3 [3:4:4:4:5] times, P4 [7:2:5:8:2].

1st to 24th row sets patt and cable panel. Keeping continuity of patt as set (throughout) cont until Left Front measures 25 [29:33:38:42:41]cm, 9¾ [11½:13:15:16½:16]in from turn back row, ending with a ws row.

### Shape Armhole

**Next Row:** Patt2tog (armhole edge), patt to end. 51 [54:58:61:64:67]sts.

**Next Row:** Patt to last 2sts, patt2tog.

50 [53:57:60:63:66]sts.

Work 6 [6:6:8:8] rows dec 1 st at armhole

edge in every row.

44 [47:51:52:55:58]sts.

Cont without shaping until armhole measures 7 [8:9:9:10:11]cm, 2¾ [3:3½:3½:4:4¼]in, ending with a rs row.

### Shape Neck

**Next Row:** Cast off 8 [10:10:12:12:13]sts in patt, patt to end. 36 [37:41:40:43:45]sts.

Work 8 rows dec 1 st at neck edge in every row. 28 [29:33:32:35:37]sts.

Work 7 rows dec 1 st at neck edge in next and every foll alt row.

24 [25:29:28:31:33]sts.

Cont without shaping until armhole measures 13 [14:15:16:17:18]cm, 5¼ [5½:6:6¼:6½:7]in, ending with a ws row. Cast off in patt.

### Right Front

**Using 2.75mm (US2) needles** cast on 40 [43:46:49:52:54]sts and work 17 rows in st-st.

**18th Row:** Knit (for turn back row).

Commencing with 1st row of st-st work 17 rows.

**36th Row:** P4 [7:2:5:8:2], (m1, P8) 3 [3:4:4:4:5] times, (m1, P1) 8 times, m1, P4.

52 [55:59:62:65:68]sts.

**Change to 3.25mm (US3) needles** and proceed as follows:-

**1st Row:** K3, P3, C4B, P4, C4F, P3, (K8, P1) 3 [3:4:4:4:5] times, K4 [7:2:5:8:2].

**2nd Row:** P4 [7:2:5:8:2], (K1, P8) 3 [3:4:4:4:5] times, K3, P4, K4, P4, K6.

**3rd Row:** K3, P2, T3B, T3F, P2, T3B, T3F, P2, (K8, P1) 3 [3:4:4:4:5] times, K4 [7:2:5:8:2].

**4th Row:** P4 [7:2:5:8:2], (K1, P8) 3 [3:4:4:4:5] times, (K2, P2) 4 times, K5.

**5th Row:** K3, P1, (T3B, P2, T3F) twice, P1, (K8, P1) 3 [3:4:4:4:5] times, K4 [7:2:5:8:2].

**6th Row:** P4 [7:2:5:8:2], (K1, P8) 3 [3:4:4:4:5] times, K1, P2, K4, P4, K4, P2, K4.

**7th Row:** K3, P1, K2, P4, C4B, P4, K2, P1, (K8, P1) 3 [3:4:4:4:5] times, K4 [7:2:5:8:2].

**8th Row:** As 6th row.

**9th Row:** K3, P1, K2, P4, K4, P4, K2, P1, (K8, P1) 3 [3:4:4:4:5] times, K4 [7:2:5:8:2].

**10th Row:** As 6th row.

**11th Row:** As 7th row.

**12th Row:** As 6th row.

**13th Row:** K3, P1, (T3F, P2, T3B) twice, P1, (K8, P1) 3 [3:4:4:4:5] times, K4 [7:2:5:8:2].

**14th Row:** As 4th row.

**15th Row:** K3, P2, T3F, T3B, P2, T3F, T3B, P2, (K8, P1) 3 [3:4:4:4:5] times, K4 [7:2:5:8:2].

**16th Row:** As 2nd row.

**17th Row:** As 1st row.

**18th Row:** As 2nd row.

**19th Row:** As 3rd row.

**20th Row:** As 4th row.

**21st Row:** K3, P2, (K2, P2) twice, K2, slip last 6sts worked onto cable needle and wrap yarn 4 times anti clockwise round these 6sts, then slip the 6sts back onto right

### Measurements

To Fit Age (approximately)

2-3 4-5 6-7 8-9 10-11 12-13

To Fit Chest

cm 56 61 66 71 76 81

in 22 24 26 28 30 32

Actual Measurement

cm 66 71 76 81 86 91

in 26 28 30 32 34 36

Full Length

cm 38 43 48 54 59 59

in 15 17 19 21¼ 23¼ 23¼

Sleeve Length

cm 24 29 33 37 41 42

in 9½ 11½ 13 14½ 16 16½

### Materials

300 [300:350:350:400:450]g of Queensland Joey's Baby Silk Shade 9

1 Pair of 3.25mm (US3) knitting needles

1 Pair of 2.75mm (US2) knitting needles

Cable needle

1 open end Zip 36 [41:46:51:56:56]cm, 14 [16:18:20:22:22]in, in length

### Tension

27sts and 34 rows to 10cm, 4in, over pattern using 3.25mm (US3) knitting needles.

### Special Abbreviations

**St-St. Stocking Stitch**

**1st Row:** Knit.

**2nd Row:** Purl.

Rep 1st and 2nd rows.

### G-st Garter Stitch

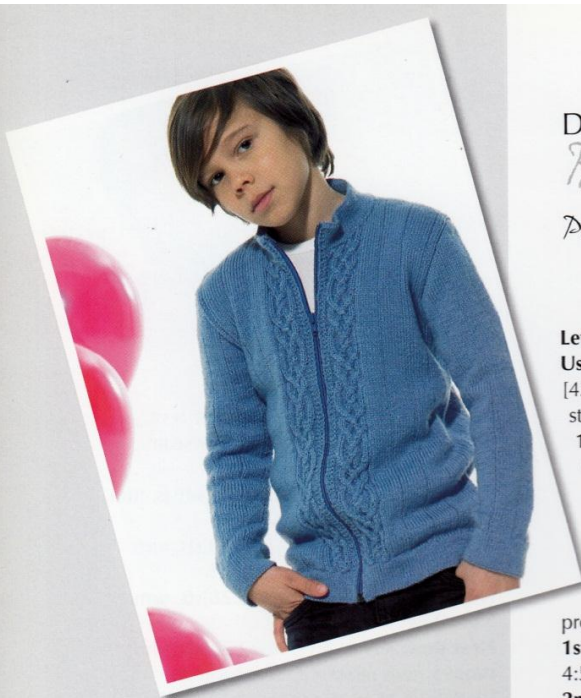
**Every Row:** Knit.

**C4B.** Slip next 2sts onto CN and hold at back of work, K2 then K2 from CN.

**C4F.** Slip next 2sts onto CN and hold at front of work, K2 then K2 from CN.

**T3B.** Slip next st onto CN and hold at back of work, K2, then P1 from CN.

**T3F.** Slip next 2sts onto CN and hold at front of work, P1, then K2 from CN.



hand needle, P2, K2, P2, ( K8, P1) 3 [3:4:4:4:5] times, K4 [7:2:5:8:2].

**22nd Row:** As 4th row.

**23rd Row:** As 15th row.

**24th Row:** P4 [7:2:5:8:2], (K1, P8) 3 [3:4:4:4:5] times K3, P4, K4, P4, K6.

1st to 24th row sets patt and cable panel.

Keeping continuity of patt as set

(throughout) cont until Right Front measures

25 [29:33:38:42:41]cm, 9¾ [11½:13:15:16½:16]in from turn back row, ending with a ws row.

#### Shape Armhole

**Next Row:** Patt to last 2sts, Patt2tog (armhole edge). 51 [54:58:61:64:67]sts.

**Next Row:** Patt2tog, patt to end.

50 [53:57:60:63:66]sts.

Work 6 [6:6:8:8:8] rows dec 1 st at armhole edge in every row.

44 [47:51:52:55:58]sts.

Cont without shaping until armhole

measures 7 [8:9:9:10:11]cm, 2¾ [3:3½:3½:4:4¼]in, ending with a ws row.

#### Shape Neck

**Next Row:** Cast off 8 [10:10:12:12:13]sts in patt, patt to end.

36 [37:41:40:43:45]sts.

**Next Row:** Patt.

Work 8 rows dec 1 st at neck edge in every row. 28 [29:33:32:35:37]sts.

Work 7 rows dec 1 st at neck edge in next and every foll alt row.

24 [25:29:28:31:33]sts.

Cont without shaping until armhole

measures 13 [14:15:16:17:18]cm, 5¼ [5½:6:6¼:6½:7]in, ending with a ws row.

Cast off in patt.

#### Back

**Using 2.75mm (US2) needles** cast on 80 [86:92:98:104:108]sts and work 17 rows in st-st.

**18th Row:** Knit (for turn back row).

Commencing with 1st row of st-st work 17 rows.

**36th Row:** P4 [7:2:5:8:2], m1, (P8, m1) 9 [9:11:11:11:13] times, P4 [7:2:5:8:2].

90 [96:104:110:116:122]sts.

**Change to 3.25mm (US3) needles** and proceed as follows:-

**1st Row:** K4 [7:2:5:8:2], P1, \* K8, P1, rep from \* to last 4 [7:2:5:8:2]sts, K4 [7:2:5:8:2].

**2nd Row:** P4 [7:2:5:8:2], \* K1, P8, rep from \* to last 5 [8:3:6:9:3]sts, K1, P4 [7:2:5:8:2].

1st and 2nd rows set patt.

Keeping continuity of patt as set

(throughout) cont until Back measures 25 [29:33:38:42:41]cm, 9¾ [11½:13:15:16½:16]in from turn back row, ending with a ws row.

#### Shape Armholes

Work 8 [8:8:10:10:10] rows dec 1 st at each end of every row. 74 [80:88:90:96:102]sts.

Cont without shaping until armholes

measure 13 [14:15:16:17:18]cm, 5¼ [5½:6:6¼:6½:7]in, ending with a ws row.

Cast off in patt.

#### Sleeves (Both alike)

**Using 2.75mm (US2) needles** cast on 42 [48:50:54:56:56]sts and work 17 rows in st-st.

**18th Row:** Knit (for turn back row).

Commencing with 1st row of st-st work 17 rows.

**36th Row:** P1 [4:5:7:8:8], m1, (P8, m1) 5 times, P1 [4:5:7:8:8].

48 [54:56:60:62:62]sts.

**Change to 3.25mm (US3) needles** and proceed as follows:-

**1st Row:** K1 [4:5:7:8:8], P1, \* K8, P1, rep from \* to last 1 [4:5:7:8:8]sts, K1 [4:5:7:8:8].

**2nd Row:** P1 [4:5:7:8:8], \* K1, P8, rep from \* to last 2 [5:6:8:9:9]sts, K1, P1 [4:5:7:8:8].

1st and 2nd rows set patt.

Keeping continuity of patt as set

(throughout) work 54 [61:77:95:104:109] rows inc 1 st at each end of 5th and every foll 7th [8th:8th:10th:9th:8th] row, working

increased sts in patt. 64 [70:76:80:86:90]sts.

Cont without shaping until Sleeve measures

24 [29:33:37:41:42]cm, 9½ [11½:13:14½:16:16½]in from turn back row, ending with a ws row.

#### Shape Sleeve Top

Work 8 [8:8:10:10:10] rows dec 1 st at each end of every row.

48 [54:60:60:66:70]sts.

Cast off 2sts in patt at beg of next 20 [22:26:26:28:28] rows. 8 [10:8:8:10:14]sts.

Cast off rem 8 [10:8:8:10:14]sts in patt.

#### Neckband

Join shoulder seams. With rs facing, **using 2.75mm (US2) needles** pick up and knit 26 [28:28:30:30:32]sts evenly along right side

of neck, 26 [30:30:34:34:36]sts from back of neck and 26 [28:28:30:30:32]sts evenly

along left side of neck.

78 [86:86:94:94:100]sts.

**Next Row:** Knit.

**1st Row:** Knit.

**2nd Row:** K3, purl to last 3sts, K3.

1st and 2nd rows set st-st with g-st border.

Cont until Neckband measures 4cm, 1½in, ending with a rs row.

**Next Row:** Knit (for turn back row).

Cont in st-st and g-st border for a further 4cm, 1½in, ending with a ws row.

Cast off.

#### To Complete

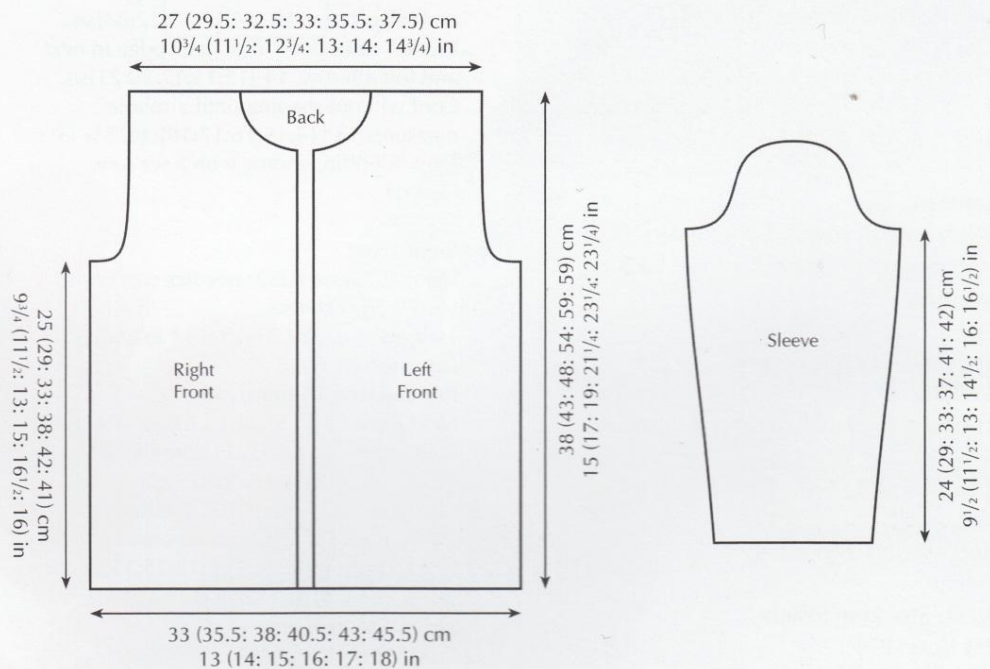
Fold Sleeves in half lengthways, then placing folds to shoulder seams sew Sleeves

in position. Join side and Sleeve seams. Fold first 17 rows of Sleeves onto ws and slip

stitch in position. Placing both ends of zip to turning rows sew zip in position.

Fold back lower edge of body and Neckband from turning rows onto ws and slip stitch

loosely in position. See ball band for care instructions.



Please note:  
All measurements are approximate