



MODA
FIBRE
CO. 

PAOLA

a design by Julie Powell
featuring Vela (C2614)

OVERVIEW

Tunic-length pullover with wide fold-over turtleneck, worked in all-over slip stitch pattern. Worked from the bottom up in pieces, then sewn together.

SIZES

Small (Medium, Large, X-Large, XX-Large, XXX-Large)

To fit bust: 32 (36, 40, 44, 48, 52)in/81.5 (91.5, 101.5, 112, 122, 132)cm.

Positive Ease: 6-7in (15-18cm).

FINISHED MEASUREMENTS

Bust: 39 (42½, 46, 50, 55, 58½)in/99 (108, 117, 127, 139.5, 148.5)cm.

Length: 24½ (25, 25½, 26, 26½, 27)in/62 (63.5, 65, 66, 67.5, 68.5)cm.

YARN

Moda Fibre Co. **VELA (C2614)**

A color 09 Impulse 3 (3, 3, 3, 4, 4) x 25g

Juniper Moon Farm **MOONSHINE FINE**

B color 1032 Plum Tree 3 (3, 3, 3, 4, 4) x 100g

Juniper Moon Farm **IRIS**

C color 03 Tropical Lagoon 1 (1, 1, 2, 2, 2) x 100g

NEEDLES + NOTIONS

Size US 8 (5mm) needles, for body.

Size US 6 (4mm) needles, for hem, cuffs, and turtleneck.

Stitch markers; stitch holders or waste yarn.

GAUGE

18 sts and 22 rows = 4in (10cm) in Slip Stitch Pattern, using larger needles.

Change needle size if necessary to obtain the correct gauge.

ABBREVIATIONS

beg: begin(ning)(s); **BO:** bind off; **CO:** cast on; **cont:** continu(e)(es)(ing); **inc:** increase(e)(es)(ing); **k:** knit; **p:** purl; **patt:** pattern(s); **rem:** remain(ing)(s); **rep:** repeat(ing)(s); **RS:** right side; **sl:** slip; **st(s):** stitch(es); **WS:** wrong side; **wyib:** wyib; **wyif:** with yarn in front.

STITCH GLOSSARY

M1L (make one left): insert left needle tip from front to back under strand between last st worked and next st and knit strand through the back loop.

M1R (make one right): insert left needle tip from back to front under strand between last st worked and next st and knit strand through the front loop.

NOTE

Slip Stitch Pattern may be worked from chart or written instructions.

PULLOVER

YARN PAIRINGS

Color 1: Work with 1 strand each of **A** and **B** held together.

Color 2: Work with 1 strand of **C**.

2X2 RIB (multiple of 4 sts)

Row 1 (RS): *K2, p2; rep from * to end.

Row 2 (WS): *P2, k2; rep from * to end.

Rep Rows 1 and 2 for patt.

SLIP STITCH PATTERN (multiple of 4 sts)

Note: Sl sts purlwise with yarn to WS (wyib on RS rows, wyif on WS rows).

Row 1 (RS): With Color 1, knit.

Row 2 (WS): With Color 1, purl.

Row 3: With Color 2, *k2, sl 2; rep from * to end.

Row 4: With Color 2, purl the purl sts and slip the slipped sts as they face you.

Rows 5 and 6: Rep Rows 1 and 2.

Row 7: With Color 2, *sl 2, k2; rep from * to end.

Row 8: Rep Row 4.

Rep Rows 1-8 for patt.

BACK

Using smaller needles and Color 1, CO 88 (96, 104, 112, 124, 132) sts. Beg 2x2 Rib; work 8 rows even.

Change to larger needles.

Beg Slip Stitch Pattern; work even until piece measures 23½ (24, 24½, 25, 25½, 26)in/59.5 (61, 62, 63.5, 65, 66)cm, ending with a WS row.

Shape shoulders

BO 7 (9, 10, 11, 12, 13) sts at beg of next 2 (6, 6, 6, 2, 2) rows, then 8 (0, 0, 0, 13, 14) sts at beg of next 4 (0, 0, 0, 4, 4) rows. Place rem 42 (42, 44, 46, 48, 50) sts on st holder or waste yarn for neck.

FRONT

Work as for back until piece measures 20½ (21, 21, 21½, 21½, 22)in/ 52 (53.5, 53.5, 54.5, 54.5, 56)cm, ending with a WS row.

Next Row (RS): Work 36 (40, 44, 47, 53, 56) sts in patt as established; place next 16 (16, 16, 18, 18, 20) sts on st holder or waste yarn for neck, then place rem 36 (40, 44, 47, 53, 56) sts on st holder or waste yarn for right shoulder.

Left Shoulder

Shape neck and shoulder

Note: Neck and shoulder shaping are worked at the same time; please read ahead.

Working on left shoulder sts and cont in patt as established, BO 3 sts at neck edge twice, 2 sts twice, then 1 st 3 (3, 4, 4, 5, 5) times.

AT THE SAME TIME, when piece measures 23½ (24, 24½, 25, 25½, 26)in/59.5 (61, 62, 63.5, 65, 66)cm, ending with a WS row, BO 7 (9, 10, 11, 12, 13) sts at armhole edge 1 (3, 3, 3, 1, 1) time(s), then 8 (0, 0, 0, 13, 14) sts 2 (0, 0, 0, 2, 2) times.

Right Shoulder

Shape neck and shoulder

Note: Neck and shoulder shaping are worked at the same time; please read ahead.

Cont in patt as established, BO 3 sts at neck edge twice, 2 sts twice, then 1 st 3 (3, 4, 4, 5, 5) times.

AT THE SAME TIME, when piece measures 23½ (24, 24½, 25, 25½, 26)in/59.5 (61, 62, 63.5, 65, 66)cm, ending with a RS row, BO 7 (9, 10, 11, 12, 13) sts at armhole edge 1 (3, 3, 3, 1, 1) time(s), then 8 (0, 0, 0, 13, 14) sts 2 (0, 0, 0, 2, 2) times.

SLEEVES

Using smaller needles and Color 1, CO 44 (44, 44, 48, 48, 48) sts. Beg 2x2 Rib; work 8 rows even.

Change to larger needles.

Beg Slip Stitch Pattern; work 4 rows even.

Shape sleeves

Inc Row (RS): K1, M1R, work in patt as established to last st, M1L, k1—2 sts inc'd.

Rep Inc Row every RS row 2 (5, 9, 9, 17, 21) times, then every 4th row 17 (16, 14, 14, 9, 7) times, working new sts in Slip Stitch Pattern—84 (88, 92, 96, 102, 106) sts.

Work even until piece measures 16¾ (17, 17, 17, 16¼, 16½)in/42.5 (43, 43, 43, 41.5, 42)cm, ending with a WS row.

BO all sts loosely.

FINISHING

Block pieces to measurements. Sew left shoulder seam.

TURTLENECK

With RS facing, using smaller needle and Color 1, and beg at right back neck edge, knit across 42 (42, 44, 46, 48, 50) held back neck sts, pick up and knit 17 (17, 20, 20, 23, 23) sts to held front sts, knit across 16 (16, 16, 18, 18, 20) these sts, then pick up and knit 17 (17, 20, 20, 23, 23) sts to shoulder—92 (92, 100, 104, 112, 116) sts. Do not join; work back and forth in rows.

Beg 2x2 Rib; work even until piece measures 8¼in/21cm from pick-up row, ending with a WS row.

BO all sts loosely in patt.

Sew turtleneck and second shoulder seam. Place removable markers 9 (9½, 10, 10½, 11, 11½)in/23 (24, 25.5, 26.5, 28, 29)cm down from shoulder seams on front and back. Sew sleeves between markers. Sew side and sleeve seams.



stitch key

□ knit on RS, purl on WS

▽ sl1

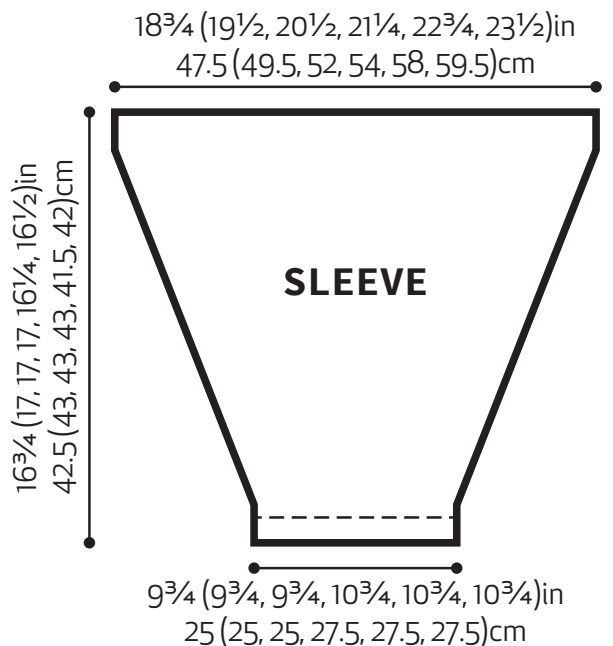
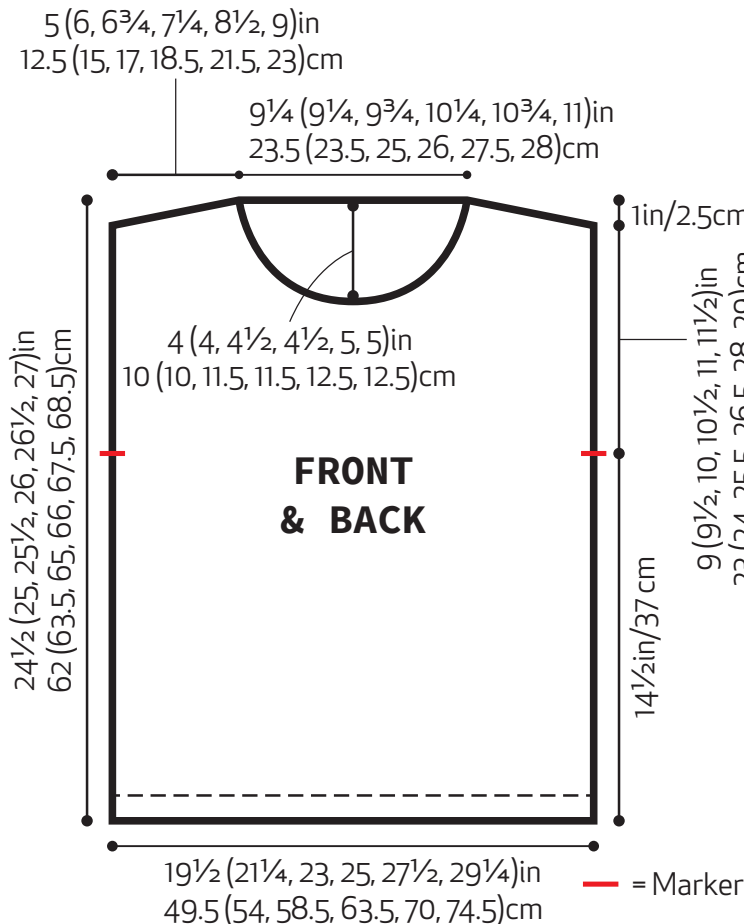
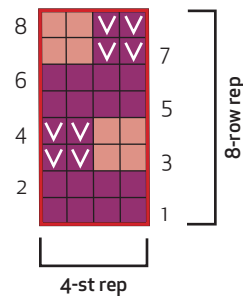
□ repeat

color key

■ color 1

■ color 2

Slip Stitch Pattern



— = Marker



MODA
FIBRE
CO. 

Copyright © 2025 Knitting Fever, Inc. All rights reserved. 315 Bayview Avenue, Amityville, New York 11701, United States of America. knittingfever.com. The knitwear designs in this publication are intended for personal use only and may not be knitted for sale. This publication is protected by international copyright laws and is sold on the condition that it is used for non-commercial purposes. No part of this publication may be copied or reproduced by any means without written permission of the publisher. Measurements, gauge, and other information, are included as a guideline. If you have any questions about the projects included in this publication, please contact us at knittingfever.com.