



THE COLOR EVOLUTION



DORE DE PERSE

MATERIALS

Luxury Silk by Laines du Nord 4 (5) balls of color 10
Size US7/4.5mm and US8/5mm circular needles.

SIZE

S/M (M/L)

FINISHED MEASUREMENTS

Width 27(32)"/68(81)cm

Length 18(23)"/46(58)cm

Sleeve length 14(16)"/35(41)cm

GAUGE

21sts and 27rows = equal to the height of one pattern repeat: 6 rows of open-work stitch + 10 rows of stockinette stitch), worked with US8/5 mm needles.

ABBREVIATIONS

sts = stitch (es);

MP = point marker

pMP = pass MP

RS = right side of the work

WS = wrong side of the piece

Skpo = slip next stitch, K1, pass slipped st over knit st.

K = knit

P = purl

NR: Next row

M1K = pick up horizontal loop lying between last stitch worked and next st and knit into back of loop.

NOTE

This sweater is worked from one side to the other. The two parts are worked the same up to a certain point, then the back is worked with the LEFT sleeve, and the front is worked with the RIGHT sleeve.

STITCHES USED

Seed stitch

Row 1: K1, P1,

Row 2: K the K sts and P the P sts.

INSTRUCTIONS

Worked horizontally.

RIGHT SLEEVE AND FRONT

*** With US7/4.5mm circular needle Cast on 54 (60) sts and close in the round.

Work 12 (14) rounds in K1, P1 rib.

Change to US8/5mm circular needles and work as follows:

Round 1: K26 (29) sts, place a coloured marker, K2, place a coloured marker, K26 (29).

** **Round 2:** Knit to end.

Slip markers as you go.

Round 3: K1, M1K, knit to coloured marker, M1K, K2, M1K, knit to coloured marker, M1K, K1.

Round 4: As round 2.

Rep the last 2 rounds twice more.

Round 9: Knit to 1 st before coloured marker, M1K, K2,

M1K, knit to end. **

Rep from ** to ** until 186 (240) sts.

Next round: knit to end.

Working in rows as follows:

Next row (RS): Knit to the coloured marker, K2, knit to end, turn.

Next row: K10 (12), purl to the last 10 (12)sts, K8 (10), slip the last 2sts purlwise with yarn in front.

Next row: Knit to the last 2sts, slip the last 2sts purlwise with yarn in front.

Rep the last 2 rows 3 times more slipping marker as you go.

Next row: K10 (12), purl to 2sts before the coloured marker, K2, P2, K2, purl to the last 8 (10)sts slip the last 2sts purlwise with yarn in front.

Next row: knit to the last 2sts slip the last 2sts purlwise with yarn in front.

Edge 2sts will be referred to patt 2sts.

Next row: K10 (12), purl to 3sts before colour marker, K3, P2, K3, patt to end.

Next row: Knit to the last 2sts, patt 2sts.

Next row: K10 (12), purl to 4sts before coloured marker, K4, P2, K4, patt to end. ***

Break off yarn.

Slip the first 93 (120)sts onto st holder for back.

Rejoin yarn to the rem 93 (120)sts and work front as follows:

FRONT

Keeping edge sts correct throughout cont as follows:

Knit 4 rows.

Next row (RS): K10 (12)sts, K4, [work row 1 patt patten panel for 19sts, K4] K3 (4) times, patt to end.

Cont in patt a set working the 16 rows off patt panel 4 (5) times in total.

Knit 4 rows.

Put sts on a st holder.

LEFT SLEEVE AND BACK

Rep from *** to ***

Slip the first 93 (120)sts onto st holder for front

Rejoin yarn to the rem 93 (120)sts and work back as follows:

Back

Keeping edge sts correct throughout cont as follows:

Knit 4 rows.

Next row (RS): Patt 10 (12)sts, knit to the last 10 (12)sts, wrapping yarn twice around needle for every sts, patt to end.

Next row: Patt 10 (12)sts, purl to the last 10 (12)sts, dropping extra loops, patt to end.

Next row (RS): Patt 10 (12)sts, knit to the last 10 (12)sts, patt to end.

Next row: Patt 10 (12)sts, purl to the last 10(12)sts,patt to end.

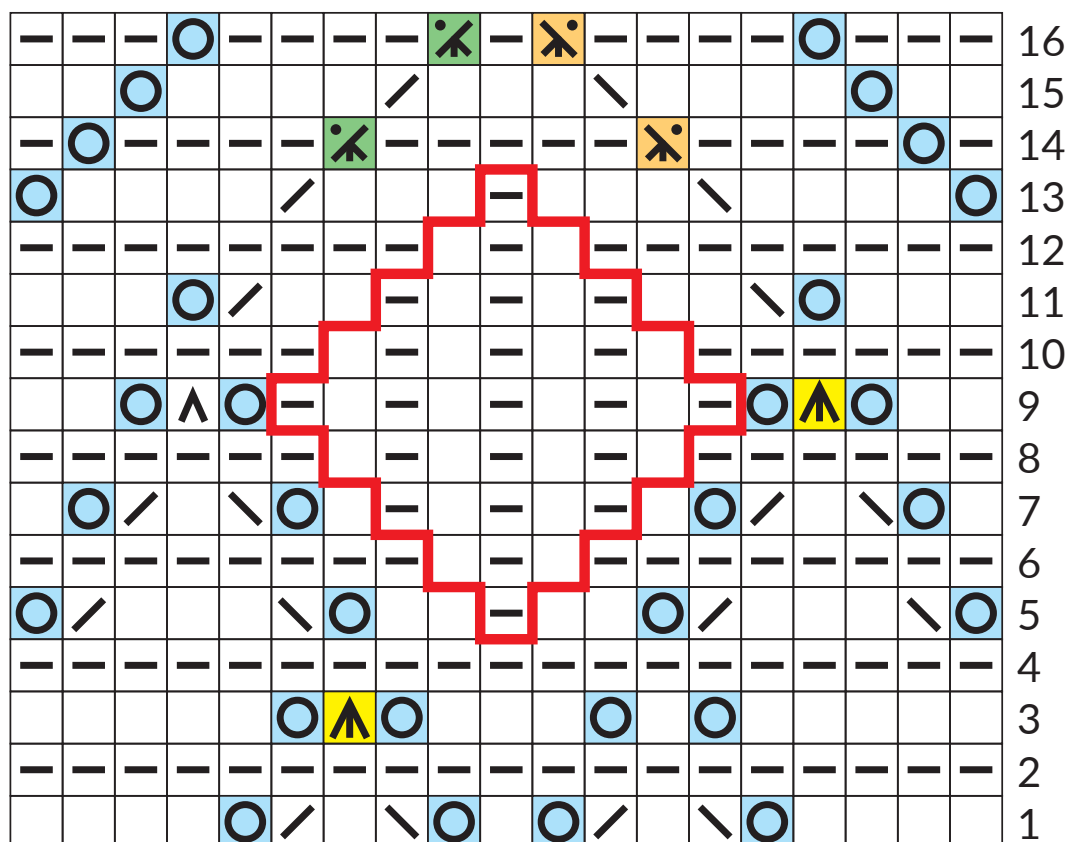
Cont as set for a further 52 (64) rows.

Knit 4 rows.

Graft sts to the back of the right sleeve

Graft the right front to the left sleeve sts.

Read the diagram from down to top, from right to left



- | | | |
|------|----------------|------------------|
| knit | k2tog | sl1, k2tog, pss0 |
| purl | sl1, k 1, pss0 | p3tog |
| yo | k3tog | p3tog tbl |

Work the stitches inside the red grid in seed stitch