



# THE COLOR EVOLUTION



## FANCY CARDIGAN

**SKILL LEVEL:** experienced

### SIZES

S (M, L)

### MEASUREMENTS OF THE GARMENT

**Width** 37 (41, 44)"/94 (104, 111)cm

**Length** 26 (28½, 32)"/66 (72, 81)cm

**Sleeve Length** 13 (13, 13)"/33 (33, 33)cm

### MATERIALS

Baby Soft Fancy by Laines du Nord 4 (5, 6) x 100g balls of col. 06

Size US6/4mm circular needle with 40"/100 cm and 24"/60 cm cables

Size US6/4mm straight needles

Stitch markers

Darning needle

Scissors

Tape measure

Waste yarn

### TENSION

24sts and 26 rows = 4"/10cm square in patt stitch using size US6/4 mm needles.

### ABBREVIATIONS

RS = right side of the work

WS = wrong side of the work

SM = stitch marker

b-SM = beginning stitch marker

st/s = stitch/es

col = color

k = knit

yo = yarn over

tog = together

rep = repeat

p = purl

sk2po = slip 1 st k-wise, knit 2 sts tog, pass slipped stitch over.

k2tog = knit 2 together (insert the right needle into the next 2 stitches on the left needle and knit them together).

### STITCHES USED

**Garter stitch in rows:** knit all rows.

**Garter stitch in the round:**

**Round 1 (RS):** knit.

**Round 2 (WS):** purl.

Rep rounds 1 and 2.

**Stockinette stitch in rows:**

**Row 1 (RS):** knit.

**Row 2 (WS):** purl.

Rep rows 1 and 2

**Stockinette stitch in the round:** knit all rounds.

### NOTES

Work the body of the cardigan as a single panel, including both front sections and the back. Worked in rows from the bottom up until the armholes. Work the upper sections of the right front, back and left front separately on the last row of the panel, then seam the shoulders together. Pick up and knit the sleeves in the round from the armholes.

Open-work st diagrams 1 and 2 are read from bottom to top. (diagram 1 worked in rows): odd-numbered rows (RS) are read from right to left, while even-numbered rows (WS) are read from left to right.

(diagram 2 worked in rounds): all rounds (RS) are read from right to left.

When instructed to place stitches on hold, transfer them onto waste yarn and tie the ends together to prevent losing stitches.

### INSTRUCTIONS

**BODY (right front, back and left front up to the armholes)**

Using circular needles sizes US6/4 mm 40"/100 cm cable, cast on 227 (247, 267) sts. And work as follows:

**Rows 1 to 8:** work in garter st in rows.

Continue in open-work st in rows (diagram 1), while shaping the side bands in garter st.

**Row 1 and all odd rows (RS):** K8, work row 1 diagram 1 repeating the 10sts until 9 sts remain, k9.

**Row 2 and all even rows (WS):** k8, P1 work row 2 diagram 1 repeating the 10sts until 8 sts remain, K8.

Rep the 8-rows of diagram 1, 4 times in total (32 rows).

Continue in stockinette st, shaping the 2 side bands in garter st.

**Row 1 (RS):** knit.

**Row 2 (WS):** k8, purl until 8 sts remain, k8.

Rep row 1 and 2 until the total length measures approx. 17 (19, 22)"/43 (49, 55)cm.

Continue working the 2 front sections and back separately.

### RIGHT FRONT

**Row 1 (RS):** knit across the first 57 (62, 67) sts, turn, leaving the remaining sts unworked.

**Row 2 (WS):** bind off 2 sts, purl to the last 8 sts, k8, turn. [55 (60, 65) sts]

**Row 3 (RS):** knit to end.

**Row 4 (WS):** purl to the last 8 sts, k8.

Rep rows 3 and 4 until the piece measures 9 (9½, 10)"/22 (24, 26) cm more.

At the end, place these sts on hold and continue working the next 113 (123, 133) sts for the back.

### BACK

**Row 1 (RS):** bind off the first 2 sts after the right front, knit until 111 (121, 131) sts on right hand needle leaving the remaining sts unworked, turn. [111 (121, 131) sts]

**Row 2 (WS):** bind off 2 sts, purl to the end of the row, turn. [109 (119 -129) sts]

**Row 3 (RS):** knit to end.

**Row 4 (WS):** purl to end.

Rep row 3 and 4 until the piece measures 9 (9½, 10)"/22 (24, 26) cm more.

Finally, place these sts on hold and continue working the last 57 (62, 67) sts for the left front.

#### LEFT FRONT

**Row 1 (RS):** bind off the first 2 sts after the back, knit across the next 55 (60, 65) sts, turn.

**Row 2 (WS):** k8, purl to the end of the row [55 (60, 65) sts]

**Row 3 (RS):** knit to end.

**Row 4 (WS):** purl to end.

Rep row 3 and 4 until the piece measures 9 (9½, 10)"/22 (24, 26) cm more.

At the end, place these sts on hold.

#### FINISHING

Using a darning needle, graft (invisible seam) the 47 (52, 57) sts on hold from the back to the corresponding 47 (52, 57) sts of the two front sections to join the shoulders. Leave the 8 garter stitch band sts from both edges of the cardigan opening (right and left sides) and the 15 back neckline sts on hold, as they will be worked later.

#### BACK COLLAR

Pick up the 8 sts from the right front opening band of the cardigan and place them onto a US6/4 mm needle. These stitches will be worked together with the 15 held sts from the back neckline to join the 2 edges:

**Row 1 (RS):** k7, k2tog (insert the needle through 1 st from the band and 1 st from the back neckline, knitting them together)

**Row 2 (WS):** k8.

Rep row 1 and 2 until all back neckline stitches have been worked.

**Note:** there will always be 8 sts on the needle.

After finishing the join with the back neckline, graft (invisible seam) the remaining 8 neckline sts to the 8 held sts from the left front opening band of the cardigan.

#### SLEEVE

Using US6/4mm circular needles 24"/60cm cable, pick up and knit 80 (90, 100) sts evenly around the edge of one armhole. Join in the round and place a b-SM to mark the beginning of the round. Continue in stockinette stitch in rounds until the sleeve measures approx. 7"/18cm from the underarm. Then work 32 rounds in open-work st following diagram 2 repeating the 8-rounds 4 times in total.

Finish the sleeve by working 8 rounds in garter, then bind off all sts.

Work the second sleeve as given for the first one.

#### BELT

Using US6/4 mm needles, cast on 12 sts and work in garter st in rows for approx. 59"/150cm. Bind off all sts.

Weave in all ends. Wet and block.

Diagram 1: open-work stitch in flat

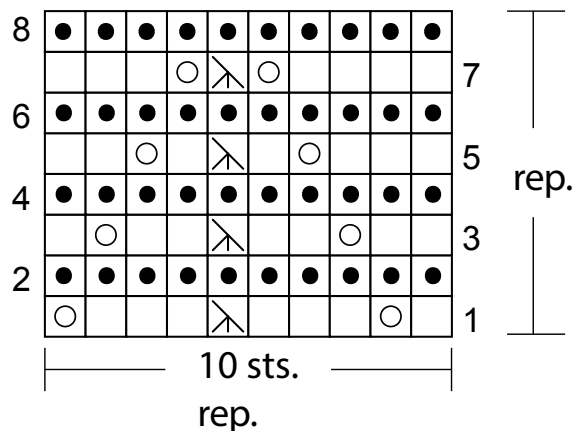
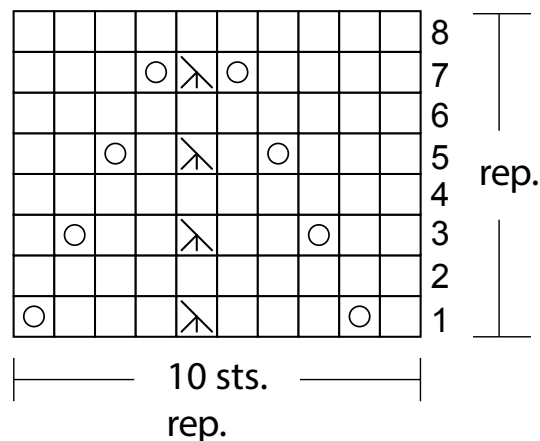


Diagram 2: open-work stitch in round



#### key

- k1
- p1
- yo
- ⊗ K3tog

Diagram 1: odd r. (RS) read from right to left  
even r. (WS) read from left to right

Diagram 2: read all r. (RS) from right to left