



NORO

MAGAZINE

An Alchemy of Stitches



An Alchemy of Stitches

●●○○ EASY

Design by Nicky Epstein

Finished Measurements

- **One finished block** 20in/51cm square.
- **Finished afghan** 44 x 64in/112 x 163cm.

Materials

To make the finished afghan:

- Size US 7/4.5 mm needles, or size to obtain gauge.
- One extra size US 7/4.5mm needle for 3-Needle Bind Off.
- One short double-pointed or straight cable needle for making Cluster 3.
- Removable stitch markers.
- Tapestry needle.

Note: Approx 1 skein makes two triangles.

Option 1

- 14 x 50g skeins of Noro *Silk Garden* in #87 (MC).
- 8 x 50g skeins of *Silk Garden Solo* in #61 (A).
- 8 x 50g skeins of *Silk Garden Solo* in #43 (B).

Option 2

- 14 x 50g skeins of Noro *Silk Garden* in #208 (MC).
- 8 x 50g skeins of *Silk Garden Solo* in #01 (A).
- 8 x 50g skeins of *Silk Garden Solo* in #11 (B).

Option 3

- 14 x 50g skeins of Noro *Silk Garden* in #341 (MC).
- 8 x 50g skeins of *Silk Garden Solo* in #07 (A).
- 8 x 50g skeins of *Silk Garden Solo* in #81 (B).

Gauge

20 sts and 24 rows = 4in/10cm square over St st using size US 7/4.5 mm needles.

TAKE TIME TO CHECK GAUGE.

General and Knitting Abbreviations

approx approximately; **beg** begin(ning); **CC** contrasting color; **cm** centimeter(s); **cn** cable needle; **cont** continue(ing); **dec** decrease(ing); **dpn** double-pointed needle(s); **est** established; **fol** follow(s)(ing); **g** gram(s); **in** inch(es); **inc** increase(ing); **k** knit; **kfb** knit into front and back of stitch; **LH** left-hand; **mm** millimeter(s); **MC** main color; **M1** make one (see glossary); **p** purl; **patt(s)** pattern(s); **pm** place marker; **psso** pass slip stitch(es) over; **rem** remain(s)(ing); **rep** repeat; **rev** reverse(ing)(ed); **RH** right-hand; **rnd(s)** round(s); **RS** right side; **SKP** slip 1, knit 1, pass slip stitch over; **SK2P** slip 1, knit 2 stitches together, pass slip stitch over k2tog; **S2KP** slip 2 stitches together knitwise, knit 1, pass slip stitches over knit 1; **sl** slip; **sm** slip marker; **ssk/ssp** slip, slip, knit/purl (see glossary); **st(s)** stitch(es); **St st** Stockinette stitch; **tbl** through back loop; **tog** together; **WS** wrong side(s); **wyib** with yarn in back; **wyif** with yarn in front; **yo** yarn over (hook or needle); * repeat directions following * as many times as indicated; [] repeat directions inside brackets as many times as indicated.

Notes

1. Each Quilt Block begins with 8 triangles, which are joined into 4 small squares, and then into one Block.
2. There are 2 triangle patterns and 2 colorways in each Block.
3. Instructions for the triangles may be worked from text or charts. The charts can be found at the end.
4. All triangles begin with the Garter Point.

5. One stitch is increased, using kfb (knit into front and back of st) at the beginning of every row of the triangle.

Garter Point

Make a slip knot—counts as first cast-on st.

Row 1 (RS) Kfb in st—2 sts.

Row 2 (WS) K1, kfb in next st—3 sts.

Row 3 Kfb, k1, kfb—5 sts. Place removable marker to indicate RS of work.

Row 4 Kfb, k4—6 sts.

Row 5 Kfb, knit to end—7 sts.

Row 6 Kfb, knit to end—8 sts.

Rows 7–22 Rep Rows 5 and 6 for 8 times—24 sts.

Rows 23 and 25 (RS) Kfb, knit to end.

Rows 24 and 26 (WS) Kfb, purl to end—28 sts. Do not cut yarn or bind off.

Triangle #1

(make 2 with MC and 2 with A)

Work Row 1–26 of Garter Point—28 sts.

Cont as foll:

Farrow Rib Pattern (3–st rep)

Row 27 Kfb, k1, [p1, k2] 8 times, p1, k1.

Row 28 Kfb, k2, [p1, k2] 8 times, p1, k1.

Row 29 Kfb, k2, [p1, k2] 9 times.

Row 30 Kfb, [p1, k2] 10 times.

Row 31 Kfb, [p1, k2] 10 times, p1.

Row 32 Kfb, k1, [p1, k2] 10 times, p1.

Row 33 Kfb, k1, [p1, k2] 10 times, p1, k1.

Row 34 Kfb, k2, [p1, k2] 10 times, p2.

Row 35 Kfb, k2, [p1, k2] 11 times.

Row 36 (WS) Kfb, purl to end—38 sts.

Leaves Pattern

Note: The Make Leaf Chart is worked 4 times across the triangle—it begins with 1 st on Row 37, increases to 9 sts on Row 43, then decreases back to 1 st on Row 51. The center st of the Make Leaf Chart corresponds to each of the 4 Make Leaf sts on the Triangle #1 chart.

If working from chart, work Row 37 as foll:

Kfb, [purl to next “make leaf” square, pm, work Row 37 of Make Leaf chart (2 sts inc’d), p6] 4 times, purl to end of row.

Row 37 (RS) Kfb, p7, [pm, yo, k1, yo, p6] 4 times, p2—47 sts.

All even-numbered Rows 38–50 Kfb, k the knit sts, p the purl sts and yo’s to end of row.

Row 39 Kfb, p8, [sm, k1, yo, k1, yo, k1, p6] 4 times, p3—57 sts.

Row 41 Kfb, p9, [sm, k2, yo, k1, yo, k2, p6] 4 times, p4—67 sts.

Row 43 Kfb, p10, [sm, k3, yo, k1, yo, k3, p6] 4 times, p5—77 sts.

Row 45 Kfb, p11, [sm, ssk, k5, k2tog, p6] 4 times, p6—71 sts.

Row 47 Kfb, p12, [sm, ssk, k3, k2tog, p6] 4 times, p7.

Row 49 Kfb, p13, [sm, ssk, k1, k2tog, p6] 4 times, p8—59 sts.

Row 51 Kfb, p14, [sm, SK2P, p6] 4 times, p9—53 sts.

An Alchemy of Stitches

Row 52 Kfb, knit to end, removing markers—54 sts.

Row 53 Kfb, knit to end.

Row 54 Kfb, purl to end.

Rows 55–58 Kfb, knit to end—60 sts.

Rows 59–60 Kfb, knit to end.

Slip Triangle sts to extra needle a length of waste yarn and set aside to be joined later.

Join triangles to make 2 small squares

Hold the RS of one MC triangle and one A triangle tog, join with 3-needle bind-off.

Triangle #2

(make 2 with MC and 2 with A)

Work Row 1–22 only of Garter Point—24 sts. Cont as follows:

Garter Block Pattern (10–st rep)

Odd-numbered rows 23–41 (RS) Kfb, knit to end.

Row 24 Kfb, k4, [p5, k5] twice.

Row 26 Kfb, k5, [p5, k5] twice, k1.

Row 28 Kfb, p1, k5, [p5, k5] twice, p1, k1.

Row 30 Kfb, k2, [p5, k5] twice, p5, k3.

Row 32 Kfb, k3, [p5, k5] twice, p5, k4.

Row 34 Kfb, k4, [p5, k5] 3 times.

Row 36 Kfb, [p5, k5] 3 times, p5, k1.

Row 38 Kfb, k1, [p5, k5] 3 times, p5, k2.

Row 40 Kfb, p2, [p5, k5] 3 times, p5, k3.

Rows 42 and 43 Kfb, p to end—45 sts.

Cluster 3 (6-st rep) Knit next 3 sts and slip them to dpn. Holding the dpn, wind yarn counterclockwise around the 3 sts (below the dpn) 6 times, end with yarn at back of work. Sl these 3 sts back to RH needle.

All even numbered rows 44–54 (WS) Kfb, purl to end.

Row 45 Kfb, knit to end—47 sts.

Row 47 Kfb, k1, [Cluster 3, k3] 7 times, Cluster 3, k1—49 sts.

Row 49 Kfb, knit to end—51 sts.

Row 51 Kfb, k6, [Cluster 3, k3] 7 times, k3—53 sts.

Rows 53–58 Kfb, knit to end—60 sts.

Rows 59 and 60 Knit to end.

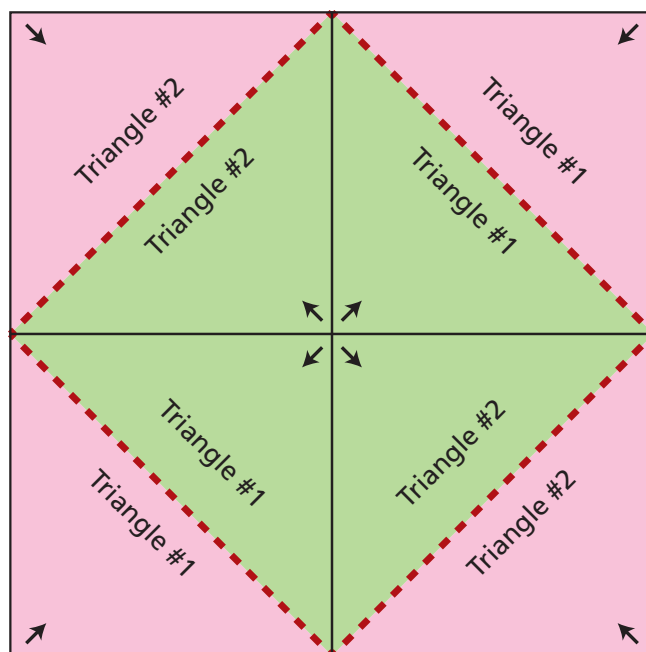
Slip Triangle sts to dpn and set aside to be joined later.

Join triangles to make 2 small squares Hold the RS of one MC triangle and one A triangle tog, join with 3-needle bind-off.

Assemble Block 1

Using Block Diagram as a guide, arrange the 4 small squares alternating Triangle #1 and #2, with the 4 A triangles at the center of the Block and the MC triangles at the outer corners. Seam the side edges of A triangles ■

Quilt Block Diagram



↑ = Direction of work

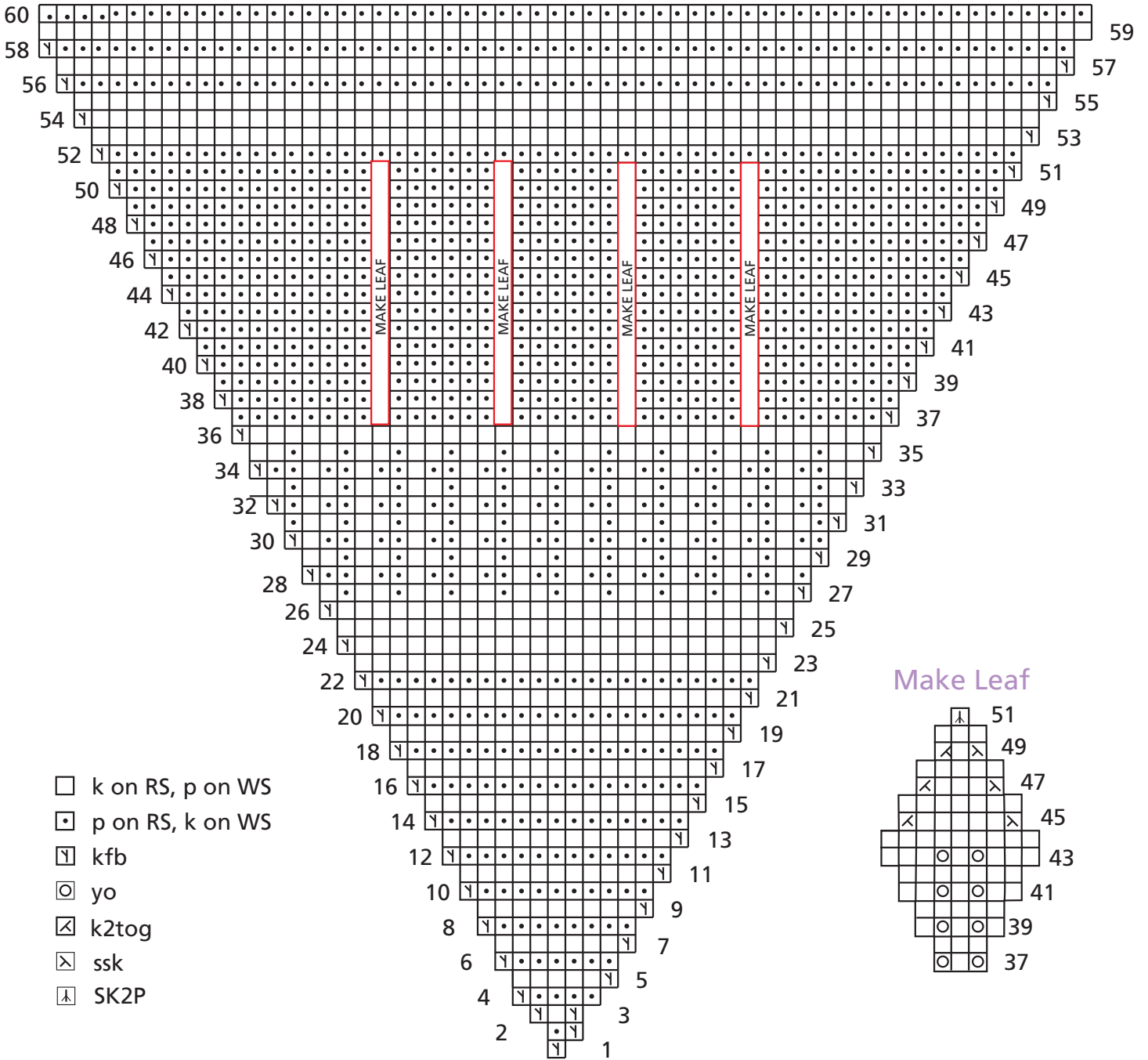
- - = 3-Needle Bind Off

■ Main color

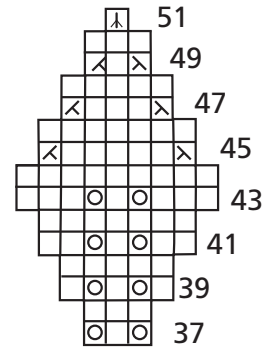
■ Color A

An Alchemy of Stitches

Triangle #1



Make Leaf



Triangle #2

