



# NORO

MAGAZINE

An Alchemy of Stitches





# An Alchemy of Stitches

●●○○ EASY

Design by Nicky Epstein

## Finished Measurements

- **One finished block** 20in/51cm square.
- **Finished afghan** 44 x 64in/112 x 163cm.

## Materials

To make the finished afghan:

- Size US 7/4.5 mm needles, or size to obtain gauge.
- One extra size US 7/4.5mm needle for 3-Needle Bind Off.
- One short double-pointed or straight cable needle for making Cluster 3.
- Removable stitch markers.
- Tapestry needle.

**Note:** Approx 1 skein makes two triangles.

## Option 1

- 14 x 50g skeins of Noro *Silk Garden* in #87 (MC).
- 8 x 50g skeins of *Silk Garden Solo* in #61 (A).
- 8 x 50g skeins of *Silk Garden Solo* in #43 (B).

## Option 2

- 14 x 50g skeins of Noro *Silk Garden* in #208 (MC).
- 8 x 50g skeins of *Silk Garden Solo* in #01 (A).
- 8 x 50g skeins of *Silk Garden Solo* in #11 (B).

## Option 3

- 14 x 50g skeins of Noro *Silk Garden* in #341 (MC).
- 8 x 50g skeins of *Silk Garden Solo* in #07 (A).
- 8 x 50g skeins of *Silk Garden Solo* in #81 (B).

## Gauge

20 sts and 24 rows = 4in/10cm square over St st using size US 7/4.5 mm needles.

**TAKE TIME TO CHECK GAUGE.**

## General and Knitting Abbreviations

**approx** approximately; **beg** begin(ning); **CC** contrasting color; **cm** centimeter(s); **cn** cable needle; **cont** continue(ing); **dec** decrease(ing); **dpn** double-pointed needle(s); **est** established; **fol** follow(s)(ing); **g** gram(s); **in** inch(es); **inc** increase(ing); **k** knit; **kfb** knit into front and back of stitch; **LH** left-hand; **mm** millimeter(s); **MC** main color; **M1** make one; **p** purl; **patt(s)** pattern(s); **pm** place marker; **psso** pass slip stitch(es) over; **rem** remain(s)(ing); **rep** repeat; **rev** reverse(ing)(ed); **RH** right-hand; **rnd(s)** round(s); **RS** right side; **SKP** slip 1, knit 1, pass slip stitch over; **SK2P** slip 1, knit 2 stitches together, pass slip stitch over k2tog; **S2KP** slip 2 stitches together knitwise, knit 1, pass slip stitches over knit 1; **sl** slip; **sm** slip marker; **ssk/ssp** slip, slip, knit/purl; **st(s)** stitch(es); **St st** Stockinette stitch; **tbl** through back loop; **tog** together; **WS** wrong side(s); **wyib** with yarn in back; **wyif** with yarn in front; **yo** yarn over (hook or needle); \* repeat directions following \* as many times as indicated; [ ] repeat directions inside brackets as many times as indicated.

## Notes

1. Each Quilt Block begins with 8 triangles, which are joined into 4 small squares, and then into one Block.
2. There are 2 triangle patterns and 2 colorways in each Block.
3. Instructions for the triangles may be worked from text or charts. The charts can be found at the end of each section.
4. All triangles begin with the Garter Point.

5. One stitch is increased, using kfb (knit into front and back of st) at the beginning of every row of the triangle.

## Garter Point

Make a slip knot—counts as first cast-on st.

**Row 1 (RS)** Kfb in st—2 sts.

**Row 2 (WS)** K1, kfb in next st—3 sts.

**Row 3** Kfb, k1, kfb—5 sts. Place removable marker to indicate RS of work.

**Row 4** Kfb, k4—6 sts.

**Row 5** Kfb, knit to end—7 sts.

**Row 6** Kfb, knit to end—8 sts.

**Rows 7–22** Rep Rows 5 and 6 for 8 times—24 sts.

**Rows 23 and 25 (RS)** Kfb, knit to end.

**Rows 24 and 26 (WS)** Kfb, purl to end—28 sts. Do not cut yarn or bind off.

## BLOCK #1

### Triangle #1

(make 2 with MC and 2 with A)

Work Row 1–26 of Garter Point—28 sts.

Cont as foll:

### Farrow Rib Pattern (3–st rep)

**Row 27** Kfb, k1, [p1, k2] 8 times, p1, k1.

**Row 28** Kfb, k2, [p1, k2] 8 times, p1, k1.

**Row 29** Kfb, k2, [p1, k2] 9 times.

**Row 30** Kfb, [p1, k2] 10 times.

**Row 31** Kfb, [p1, k2] 10 times, p1.

**Row 32** Kfb, k1, [p1, k2] 10 times, p1.

**Row 33** Kfb, k1, [p1, k2] 10 times, p1, k1.

**Row 34** Kfb, k2, [p1, k2] 10 times, p2.

**Row 35** Kfb, k2, [p1, k2] 11 times.

**Row 36 (WS)** Kfb, purl to end—38 sts.

## Leaves Pattern

**Note:** The Make Leaf Chart is worked 4 times across the triangle—it begins with 1 st on Row 37, increases to 9 sts on Row 43, then decreases back to 1 st on Row 51. The center st of the Make Leaf Chart corresponds to each of the 4 Make Leaf sts on the Triangle #1 chart.

If working from chart, work Row 37 as foll:

Kfb, [purl to next “make leaf” square, pm, work Row 37 of Make Leaf chart (2 sts inc’d), p6] 4 times, purl to end of row.

**Row 37 (RS)** Kfb, p7, [pm, yo, k1, yo, p6] 4 times, p2—47 sts.

**All even-numbered Rows 38–50** Kfb, k the knit sts, p the purl sts and yo’s to end of row.

**Row 39** Kfb, p8, [sm, k1, yo, k1, yo, k1, p6] 4 times, p3—57 sts.

**Row 41** Kfb, p9, [sm, k2, yo, k1, yo, k2, p6] 4 times, p4—67 sts.

**Row 43** Kfb, p10, [sm, k3, yo, k1, yo, k3, p6] 4 times, p5—77 sts.

**Row 45** Kfb, p11, [sm, ssk, k5, k2tog, p6] 4 times, p6—71 sts.

**Row 47** Kfb, p12, [sm, ssk, k3, k2tog, p6] 4 times, p7.

**Row 49** Kfb, p13, [sm, ssk, k1, k2tog, p6] 4 times, p8—59 sts.

# An Alchemy of Stitches

**Row 51** Kfb, p14, [sm, SK2P, p6] 4 times, p9—53 sts.

**Row 52** Kfb, knit to end, removing markers—54 sts.

**Row 53** Kfb, knit to end.

**Row 54** Kfb, purl to end.

**Rows 55–58** Kfb, knit to end—60 sts.

**Rows 59–60** Kfb, knit to end.

Slip Triangle sts to extra needle a length of waste yarn and set aside to be joined later.

## Join triangles to make 2 small squares

Hold the RS of one MC triangle and one A triangle tog, join with 3-needle bind-off.

## Triangle #2

(make 2 with MC and 2 with A)

Work Row 1–22 only of Garter Point—24 sts. Cont as follows:

## Garter Block Pattern (10–st rep)

**Odd-numbered rows 23–41 (RS)** Kfb, knit to end.

**Row 24** Kfb, k4, [p5, k5] twice.

**Row 26** Kfb, k5, [p5, k5] twice, k1.

**Row 28** Kfb, p1, k5, [p5, k5] twice, p1, k1.

**Row 30** Kfb, k2, [p5, k5] twice, p5, k3.

**Row 32** Kfb, k3, [p5, k5] twice, p5, k4.

**Row 34** Kfb, k4, [p5, k5] 3 times.

**Row 36** Kfb, [p5, k5] 3 times, p5, k1.

**Row 38** Kfb, k1, [p5, k5] 3 times, p5, k2.

**Row 40** Kfb, p2, [p5, k5] 3 times, p5, k3.

**Rows 42 and 43** Kfb, p to end—45 sts.

**Cluster 3 (6-st rep)** Knit next 3 sts and slip them to dpn. Holding the dpn, wind yarn counterclockwise around the 3 sts (below the dpn) 6 times, end with yarn at back of work. Sl these 3 sts back to RH needle.

**All even numbered rows 44–54 (WS)** Kfb, purl to end.

**Row 45** Kfb, knit to end—47 sts.

**Row 47** Kfb, k1, [Cluster 3, k3] 7 times, Cluster 3, k1—49 sts.

**Row 49** Kfb, knit to end—51 sts.

**Row 51** Kfb, k6, [Cluster 3, k3] 7 times, k3—53 sts.

**Rows 53–58** Kfb, knit to end—60 sts.

**Rows 59 and 60** Knit to end.

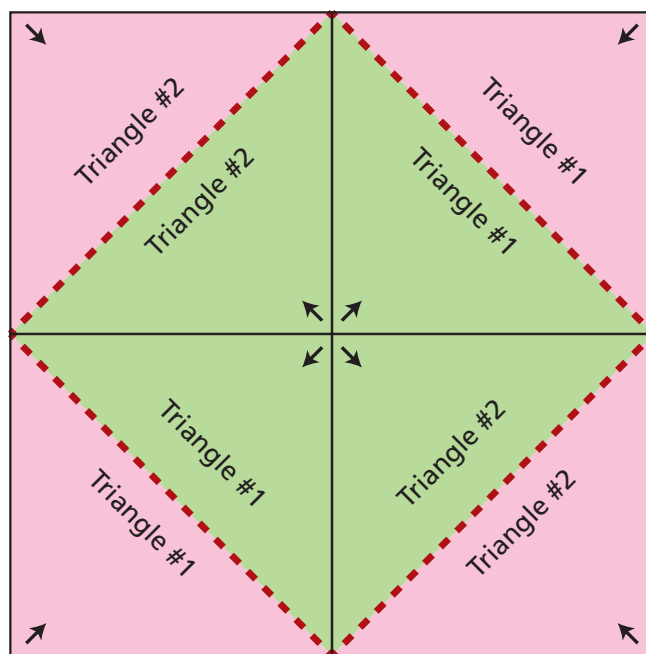
Slip Triangle sts to dpn and set aside to be joined later.

Join triangles to make 2 small squares Hold the RS of one MC triangle and one A triangle tog, join with 3-needle bind-off.

## Assemble Block 1

Using Block Diagram as a guide, arrange the 4 small squares alternating Triangle #1 and #2, with the 4 A triangles at the center of the Block and the MC triangles at the outer corners. Seam the side edges of A triangles.

Block #1 Diagram



↑ = Direction of work

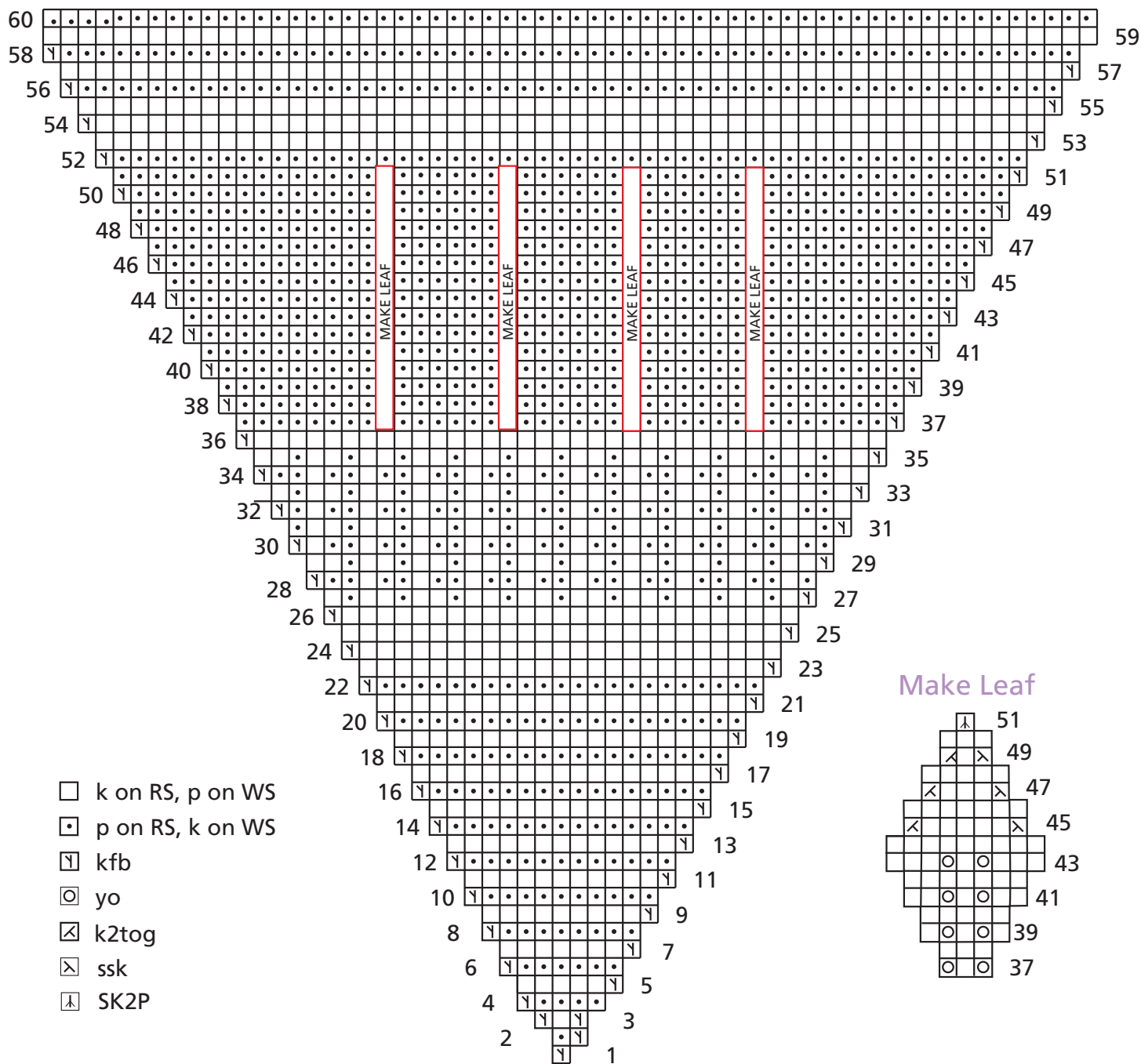
- - = 3-Needle Bind Off

■ Main color

■ Color A

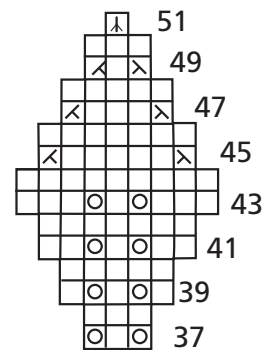
# An Alchemy of Stitches

## Block #1 - Triangle #1



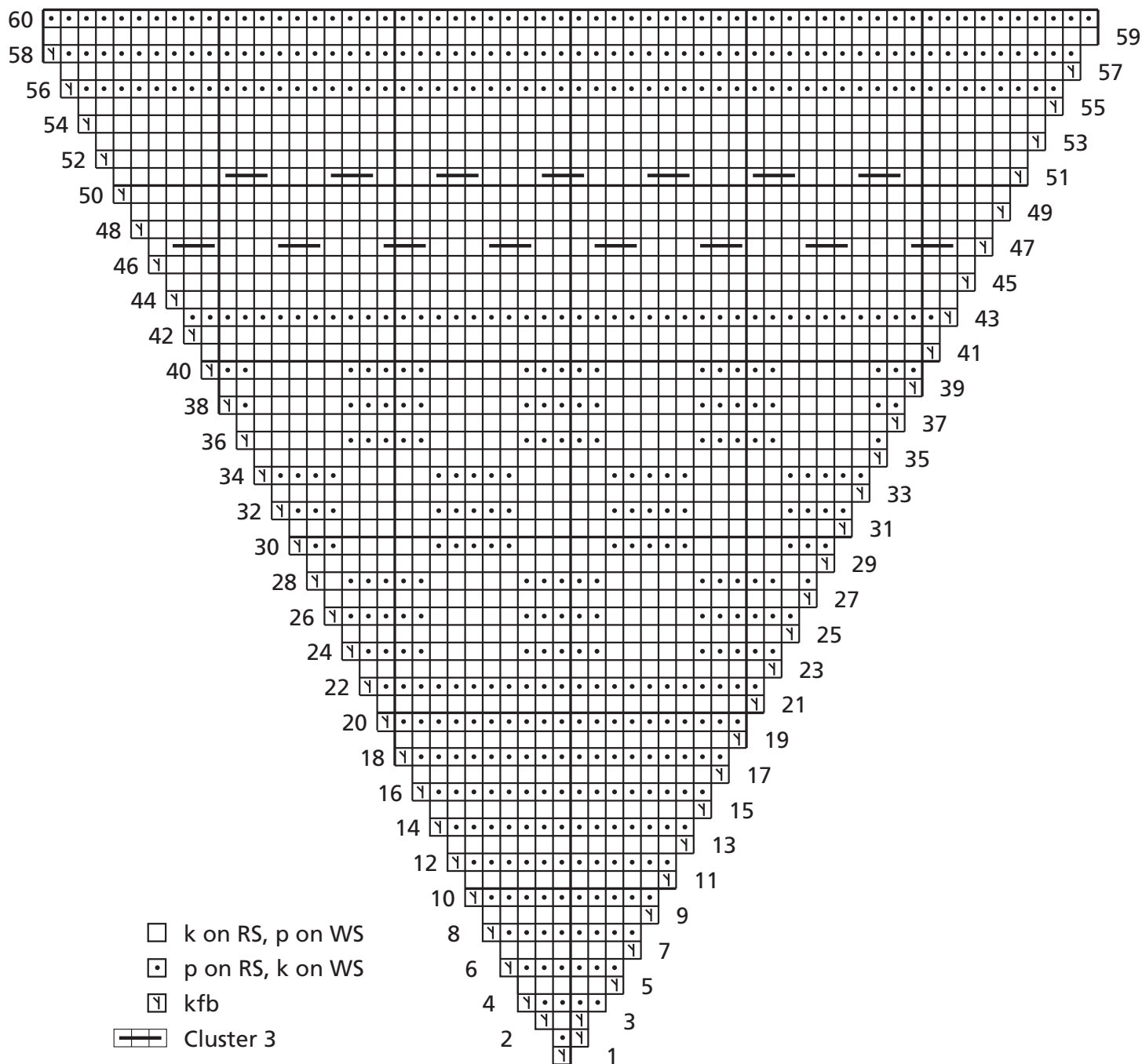
- k on RS, p on WS
- ◼ p on RS, k on WS
- Y kfb
- yo
- ⊗ k2tog
- ⊗ ssk
- ⊗ SK2P

### Make Leaf



# An Alchemy of Stitches

## Block #1 - Triangle #2



# An Alchemy of Stitches

## BLOCK #2

### Triangle #1

(Make 2 with MC and 2 with B)

With B, work Rows 1–21 only of Garter Point (see Square #1)—23 sts. Cont as foll:

**Row 22 (WS)** With B, kfb, knit to end—24 sts.

### Dots and Dashes

**Note:** For second pair of triangles, reverse colors MC and B for the slip stitch/garter dashes.

**Row 23 (RS)** With B, kfb, knit to end.

**Row 24** With B, kfb, purl to end—26 sts.

**Row 25** With MC, kfb, [k5, sl 2 wyib, k1, sl 2 wyib] twice, k5—27 sts.

**Row 26** With MC, kfb, [k4, sl 2 wyif, k1, sl 2 wyif, k1] twice, k6—28 sts.

**Rows 27 and 28** Rep Rows 23 and 24—30 sts at end of Row 28.

**Row 29** With MC, kfb, k2, [sl 2 wyib, k1, sl 2 wyib, k5] twice, sl 2 wyib, k1, sl 2 wyib, k2—31 sts.

**Row 30** With MC, kfb, k1, [sl 2 wyif, k1, sl 2 wyif, k5] twice, sl 2 wyif, k1, sl 2 wyif, k4—32 sts.

**Rows 31 and 32** Rep Rows 23 and 24—34 sts at end of Row 32.

**Row 33** With MC, kfb, k2, sl 2 wyib, [k5, sl 2 wyib, k1, sl 2 wyib] twice, k5, sl 2 wyib, k2—35 sts.

**Row 34** With MC, kfb, k1, sl 2 wyif, [k5, sl 2 wyif, k1, sl 2 wyif] twice, k5, sl 2 wyif, k4—36 sts.

**Rows 35 and 36** Rep Rows 23 and 24—38 sts at end of Row 36.

**Row 37** With MC, kfb, k6, [sl 2 wyib, k1, sl 2 wyib, k5] 3 times, k1—39 sts.

**Row 38** With MC, kfb, k6, [sl 2 wyif, k1, sl 2 wyif, k5] 3 times, k2—40 sts.

**Rows 39 and 40** Rep Rows 23 and 24—42 sts at end of Row 40.

**Rows 41 and 43** With B, kfb, knit to end.

**Rows 42 and 44** With B, kfb, knit to end.

**Rows 45, 47, 49, 51, 53, and 55** With B, kfb, knit to end.

**Rows 46, 48, 50, 52, and 54** With B, kfb, purl to end.

**Rows 56–58** Kfb, knit to end—60 sts.

**Rows 59–60** Knit to end.

### Disc Pattern

**Note:** Each disc is worked separately, then sewn in place.

Cast on 12 sts loosely (over 2 needles).

Work 3 rows in garter st.

Pass all sts, one at a time, over 1st st and fasten off. Stitch disc closed.

Cont in this manner until 8 discs are made.

Sew on discs as shown in photo, or as desired.

### Triangle #2

(Make 2 with MC and 2 with B)

With MC, work Rows 1–21 only of Garter Point (see Square #1)—23 sts. Cont as foll:

**Row 22 (WS)** With MC, kfb, knit to end—24 sts.

## Bowknots

Make bow knot Slip right needle under 3 strands, knit in next st, pulling the loop under the strands.

**Row 23 (RS)** Kfb, knit to end.

**Row 24** Kfb, purl to end.

**Row 25** kfb, knit to end—27 sts.

**Row 26 (WS)** Kfb, pm, [p5, bring yarn to back of work (ybk), sl 5 sts, bring yarn to front of work (yfwd)] 2 times, p5, pm, pl.

**Rows 27 and 29** Kfb, knit to end, slipping markers.

**Rows 28 and 30** Kfb, purl to marker, sl marker, [p5, bring yarn to back of work (ybk), sl 5 sts, bring yarn to front of work (yfwd)] 2 times, p5, sm, purl to end.

**Row 31 (RS)** Kfb, knit to marker, sm, [k7, make bow knot, k2] twice, k5, sm, knit to end.

**Rows 32 and 34** Kfb, purl to end.

**Rows 33 and 35** Kfb, knit to end.

**Row 36 (WS)** Kfb, purl to marker, sm, [bring yarn to back of work (ybk), sl 5 sts, bring yarn to front of work (yfwd), p5] twice, bring yarn to back of work (ybk), sl 5 sts, bring yarn to front of work (yfwd), purl to end.

**Rows 37 and 39** Kfb, knit to end, slipping markers.

**Rows 38 and 40** Rep Row 36.

**Row 41 (RS)** Kfb, k to marker, remove marker, [k2 make bow knot, k7] twice, k2, make bow knot, k2, remove marker, knit to end.

**Rows 42 and 44** Kfb, purl to end.

**Rows 43 and 45** Kfb, knit to end—47 sts.

## Loopy Loops

Loop Stitch (K1, [yo, k1] 5 times) all in the same st to make 11 sts.

**Row 46 (WS)** Kfb, pm, k1, [work loop st, k5] 7 times, work loop st, knit to end.

**Note:** Slip marker every row.

**Rows 47 and 49** Kfb, purl to end.

**Row 48** Kfb, knit to end.

**Row 50** Kfb, k to marker, remove marker, k1, [bind off next 9 sts, k6] 7 times, bind off next 9 sts, knit to end.

**Row 51** Kfb, [purl to 1 st before next gap, p2tog] 8 times, purl to end.

**Rows 52 and 54** Kfb, purl to end.

**Rows 53 and 55** Kfb, knit to end.

**Rows 56–58** Kfb, knit to end—60 sts.

**Rows 59–60** Knit to end.

## Join triangles to make 2 small squares

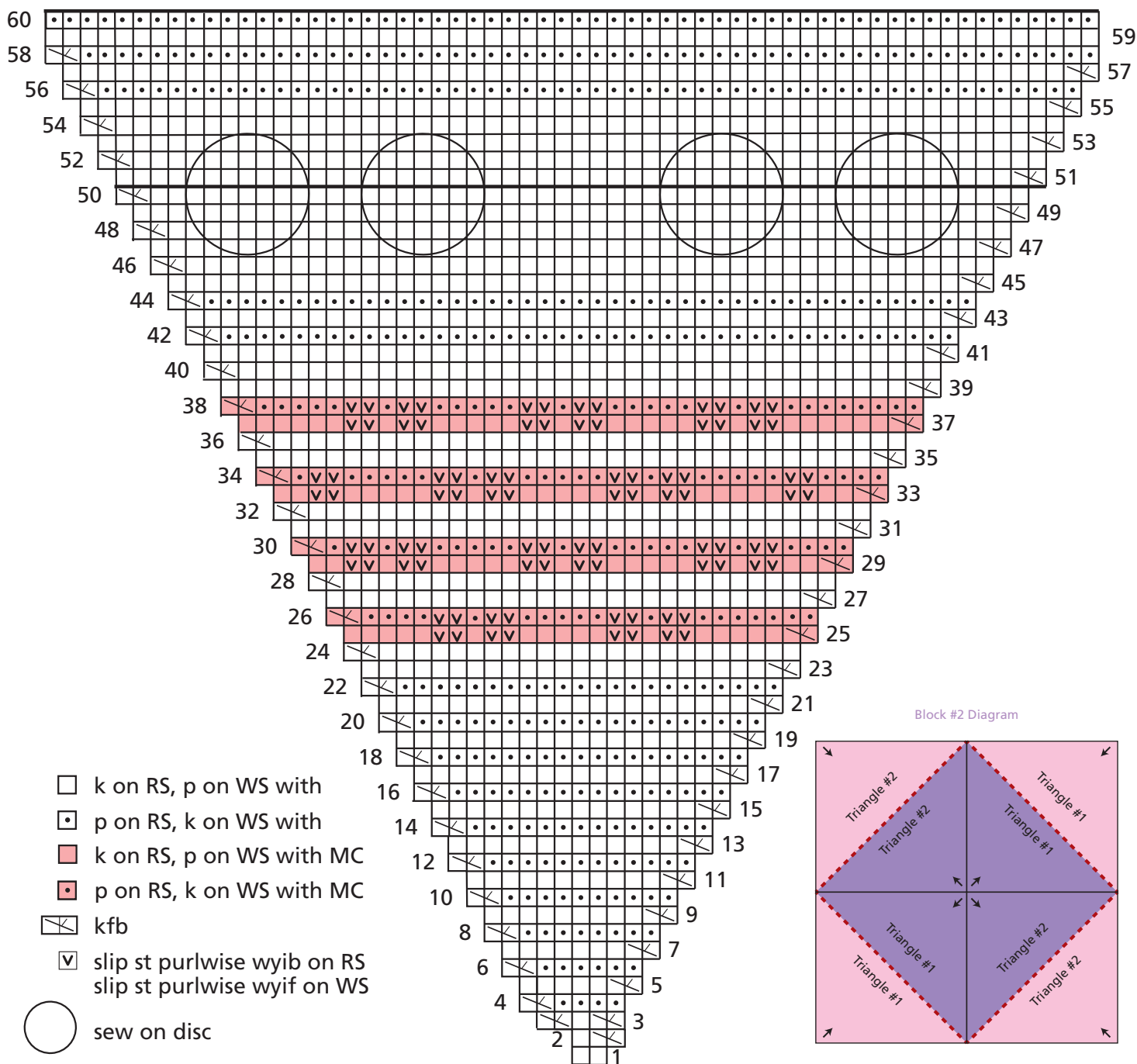
Hold the RS of one MC triangle and one B triangle tog, join with 3-needle bind-off.

## Assemble Block 2

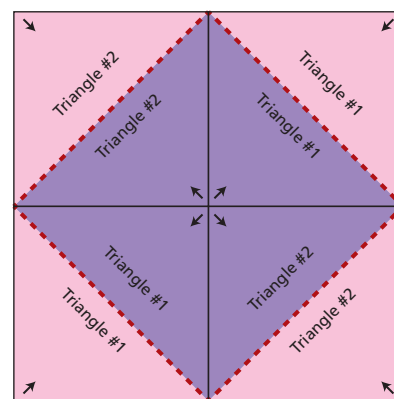
Using Block Diagram as a guide, arrange the 4 small squares alternating Triangle #1 and #2, with the 4 B triangles at the center of the Block and the MC triangles at the outer corners. Seam the side edges of B triangles. ■

# An Alchemy of Stitches

## Block #2 – Triangle #1



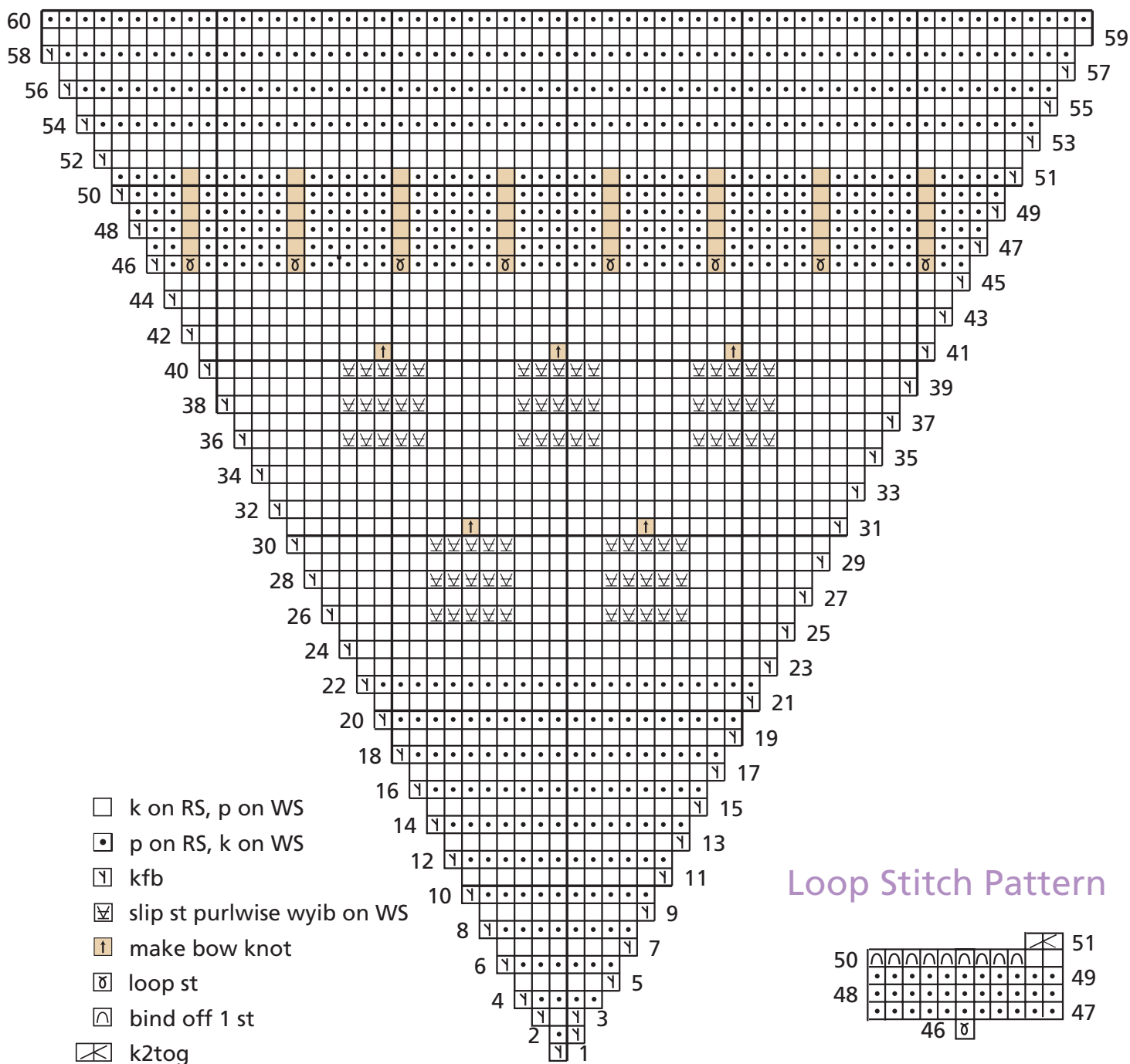
Block #2 Diagram



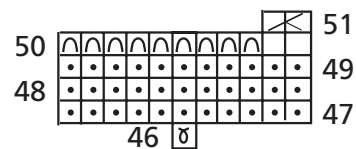
- ↑ = Direction of work
- = 3-Needle Bind Off
- ◻ Main color
- ◻ Color B

# An Alchemy of Stitches

## Block #2 - Triangle #2



### Loop Stitch Pattern





# An Alchemy of Stitches

## BLOCK #3

### Triangle #1

(Make 2 with MC and 2 with A)

With A, work Rows 1–21 only of Garter Point (see Square #1)—23 sts. Cont as foll:

### Lace Rib

**Row 22 (WS)** Kfb, pm, [p5, k2] 3 times, pm, p1—24 sts.

**Row 23** Kfb, sm, [p2, k5] 3 times, sm, p2—25 sts.

**Row 24** Kfb, k1, sm, [p5, k2] 3 times, sm, k2—26 sts.

**Row 25** Kfb, purl to marker, sm, [p2, k2tog, yo, k1, yo, ssk] 3 times, sm, purl to end—27 sts.

**Row 26** Kfb, knit to marker, sm, [p5, k2] 3 times, sm, knit to end.

**Row 27** Kfb, purl to marker, sm, [p2, k5] 3 times, sm, purl to end.

**Row 28** Kfb, knit to marker, sm, [p5, k2] 3 times, sm, knit to end.

**Row 29** Kfb, purl to marker, sm, [p2, k2tog, yo, k1, yo, ssk] 3 times, sm, purl to end—31 sts.

**Rows 30 and 32** Rep Row 26.

**Row 31** Rep Row 27.

**Row 33** Rep Row 29.

**Rows 34 and 36** Rep Row 26.

**Row 35** Rep Row 29. Remove markers.

**Rows 37–40** Kfb, knit to end—42 sts.

### Smocking Pattern

(over 6 sts)

Insert RH needle from front to back between 6th and 7th st on LH needle and draw through a long loop, sl loop to LH needle and k it tog with first st on LH needle, k1, p2, k2—smocking st made.

**Row 41** Kfb, p1, \*k2, p2, rep from \* to end—43 sts.

**Row 42** Kfb, k1, \*p2, k2; rep from \*, end p1.

**Row 43** Kfb, \*p2, k2; rep from \*, end p1.

**Row 44** Kfb, \*k2, p2; rep from \* to end.

**Row 45 (smocking row)** Kfb, k1, p2, [work Smocking st over next 6 sts, p2] 5 times, k2—47 sts.

**Row 46** Kfb, p1, \*k2, p2; rep from \*, end k1.

**Row 47** Kfb, \*k2, p2; rep from \*, end p1.

**Row 48** Kfb, \*p2, k2; rep from \* to end.

**Row 49 (smocking row)** Kfb, p1, [work Smocking st over next 6 sts, p2] 6 times—51 sts.

**Row 50** Kfb, k1, \*p2, k2; rep from \*, end p1.

**Row 51** Kfb, \*p2, k2; rep from \*, end k1.

**Row 52** Kfb, \*k2, p2; rep from \* to end.

**Row 53 (smocking row)** Kfb, k1, p2, k2, p2, [work Smocking st over next 6 sts, p2] 5 times, k2, p2, k2—55 sts.

**Row 54** Kfb, p1, \*k2, p2; rep from \*, end k1.

**Row 55** Kfb, \*k2, p2; rep from \*, end p1.

**Rows 56–58** Kfb, knit to end—60 sts.

**Rows 59–60** Knit to end.

Place sts on extra needle.

### Triangle #2

(Make 2 with MC and 2 with A)

With MC, work Rows 1–21 only of Garter Point (see Square #1)—23 sts. Cont as foll:

**Row 22 (WS)** Kfb, purl to end—24 sts.

### Single Cable Rib

**Right Twist (RT)** K2tog leaving sts on LH needle, then k first st again, slip both sts off needle.

**Row 23 (RS)** Kfb, \*k2, p3; rep from \*, end k2, p1.

**Row 24 (WS)** Kfb, \*p2, k3; rep from \*, end p2, k2.

**Row 25** Kfb, p1, \*k2, p3; rep from \*, end k2, p2.

**Row 26** Kfb, k1, \*p2, k3; rep from \* to end.

**Row 27** Kfb, p2, \*RT, p3; rep from \* to end.

**Row 28** Kfb, k2, \*p2, k3; rep from \*, end p1.

**Row 29** Kfb, \*p3, k2; rep from \*, end k1.

**Row 30** Kfb, \*k3, p2; rep from \* to end.

**Row 31** Kfb, k1, \*p3, k2; rep from \* to end.

**Row 32** Kfb, p1, \*k3, p2; rep from \*, end k1.

**Row 33** Kfb, \*RT, p3; rep from \*, end RT, p1.

**Rows 34–36** Rep Rows 24–26.

**Row 37** Kfb, p2, \*k2, p3; rep from \* to end.

**Row 38** Rep Row 28.

**Row 39** Kfb, \*p3, RT; rep from \*, end k1.

**Rows 40–42** Rep Rows 30–32.

**Rows 43 and 45 (RS)** Kfb, knit to end.

**Row 44 (WS)** Kfb, purl to end.

**Row 46 (WS)** Kfb, knit to end—48 sts.

### Lamb's Tail

(a multiple of 4 sts plus 1)

**Make tail (MT)** [K1 without taking st off needle and place the st onto the left hand needle beside the st just knit] 4 times (4 new sts), bind off these 4 new sts.

**Row 47 (RS)** Kfb, \*k3, MT; rep from \* to the last 3 sts, k3.

**Row 48** Kfb, k2, \*p1, k3; rep from \* to last 2 sts, end p1, k1.

**Rows 49 and 50** Kfb, knit to end.

**Row 51** Kfb, \*k3, MT; rep from \*, end k3.

**Row 52** Kfb, k2, \*p1, k3; rep from \* to last 2 sts, p1, k1—54 sts.

**Row 53** Kfb, knit to end.

**Row 54 (WS)** Kfb, purl to end.

**Rows 55–58** Kfb, knit to end

**Rows 59–60** Knit to end—60 sts.

Leave sts on needle.

Join triangles to make small squares.

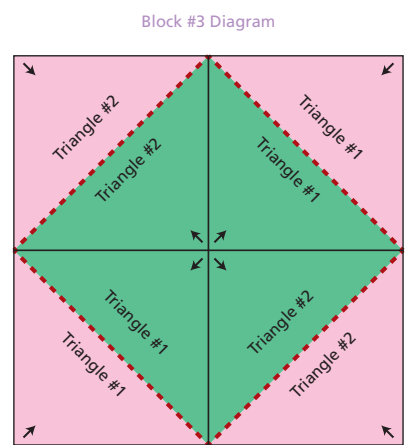
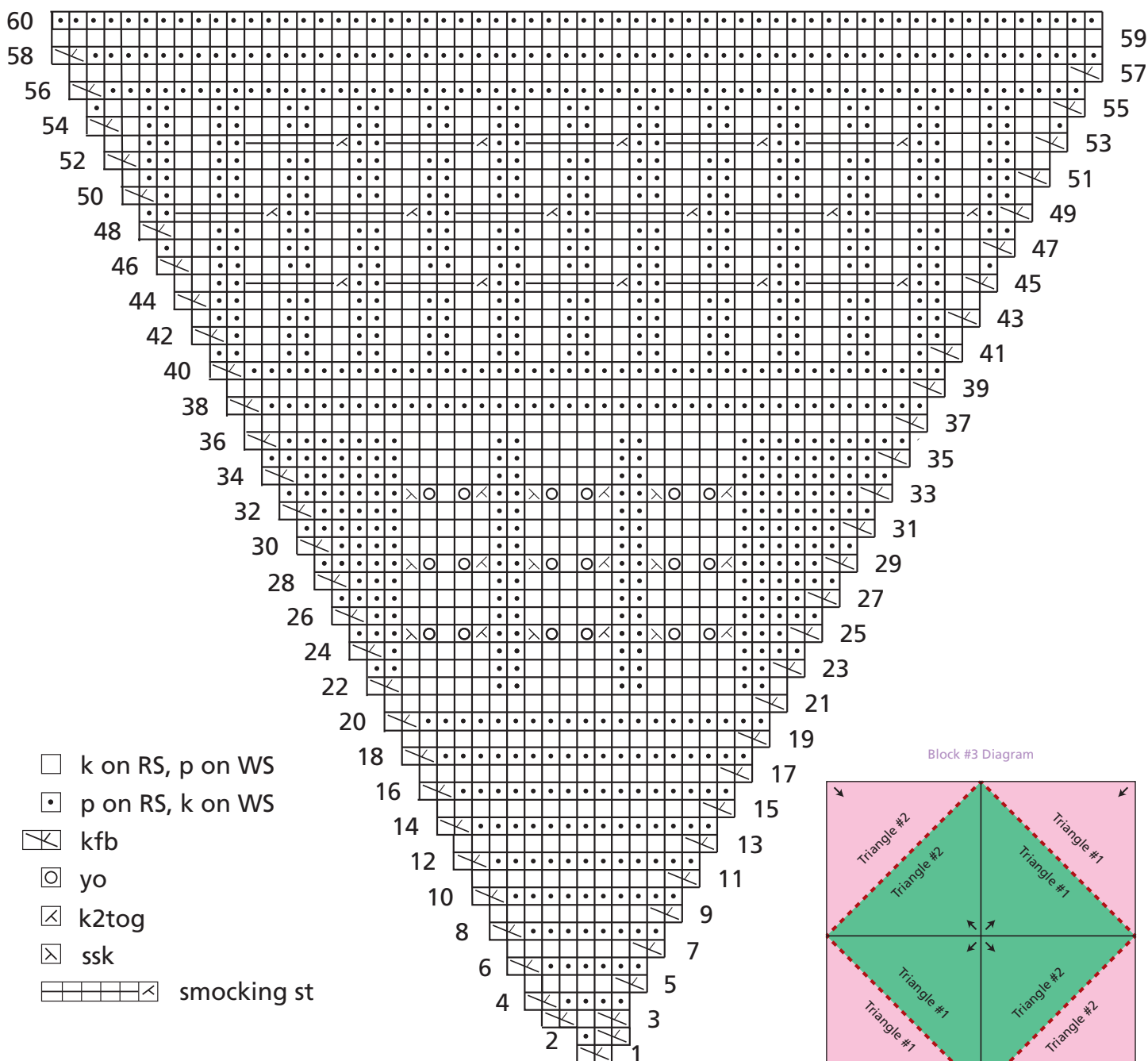
Hold the RS of one MC Triangle #1 and one A Triangle #1 tog, join with 3-needle bind-off. Repeat for Triangle #2.

### Assemble Block 1

Using Block Diagram as a guide, arrange the 4 small squares

# An Alchemy of Stitches

## Block #3 - Triangle #1



alternating Triangle #1 and #2, with the 4 A triangles at the center of the Block and the MC triangles at the outer corners. Seam the side edges of A Triangles. ■

- ↑ = Direction of work
- - - = 3-Needle Bind Off
- = Main color
- = Color A

# An Alchemy of Stitches

## Block #3 - Triangle #2

