



THE COLOR EVOLUTION



NOTE: This is an Italian pattern and has not been tech edited for the US market, and might require advanced knitting skills & math.

CABLE JACKET

MATERIAL

Dolly Maxi by Laines du Nord:

Color 1: 6 (6, 7) balls, col 01 white

Color 2: 7 (7, 8) balls, col 215 orange

Size US9/5.5 mm circular needles, 40"/100 cm and 24"/60 cm cables.

Cable needle

Darning needle

Stitch marker

Pins

Row counter

Scissors

Tape measure

GAUGE

19 sts and 23 row over 4"/10 cm square in stocking st using US9/5.5 mm needles.

If required, for right tension, use different size of needles.

ABBREVIATIONS

RS = right side of work

WS = wrong side of work

SM = stitch marker

SMb = stitch marker of the beginning of the round

st(s) = stitch(es)

col = color

decrow = decrease(ing)

k = knit

tog = together

rep = repeat

p = purl

foll = follow(ing)

NOTES

Work 2 fronts and back top-down separately, using circular needles in back-and-forth rows. After sewing the side and shoulder seams, work the sleeves in round, beg. from armholes.

SKILL LEVEL: Intermediate

SIZES: S (M, L)

MEASUREMENTS:

Measures of the cardigan shown by the picture (size M)

Chest circumference: 40"/100 cm

Total height: 26½"/67 cm

Side length (from under sleeve to lower band): 18"/46 cm

Sleeves length (from under sleeve to lower band): 19"/48 cm

Circumference of sleeve head: 14¼"/36 cm

STITCHES USED

Rib Stitch in back-and-forth rows

1st row: (k1, p1) rep across the entire row.

2nd row and even row: work the sts as they appear.

Rib 1/1 in round

1st round and next rounds: (k1, p1) rep across the entire row.

Stocking stitch in back-and-forth rows

1st row (RS): knit all sts.

2nd row (WS): purl all sts.

Stocking stitch in round

1st round and next rounds: knit every st.

2 cables motif: 18 sts foll diagram A and rep from 1st to 10th row, reaching the required length.

Cable crossed to the left: 10 sts foll diagram B and rep from 1st to 10th row reaching the required length.

Cable crossed to the right: 10 sts foll diagram C and rep from 1st to 10th row reaching the required length.

Cross 6 sts to the left: leave 3 sts onto cable needle and let it hang in front of work, k3, knit 3 sts off of cable needle.

Cross 6 sts to the right: leave 3 sts onto cable needle and let it hang in back of work, k3, knit 3 sts off of cable needle.

k2tog: insert right needle into first 2 sts of left needle and knit them together.

skp: slip 1 st k-wise, k1, pass slipped st over k1.

Binding off: work 2 sts, insert the point of left needle through first of 2 sts on right needle, pass first st over second one, * work next st (on right needle there are 2 sts), insert the point of left needle through first of these 2 sts, then pass first st over second one *, rep. from * to * binding off as many times as necessary.

INSTRUCTIONS

BACK

Using size US9/5.5 mm circular needles and 40"/100 cm cable and col 1, cast-on 84 (92, 102) sts and work 12 row rib 1/1 for band shaping.

Body

Cont working the cables motif.

1st row (RS): k33 (37, 42), place 1 SM, 18 sts for cables motif (diagram A), place 1 SM, k33 (37, 42).

2nd row (WS): p33 (37, 42), move the SM, 18 sts foll the diagram A, move the SM, p33 (37, 42).

Rep 1st and 2nd row reaching 16¼ (16¼, 16½)"/41 (41, 42) cm. As you work, move the 2 SM upwards.

Armholes shaping

1st row (RS): bind off 4 sts, k1 in every st until SM, move the SM, 18 sts foll the diagram A, k33 (37, 42). [80 (88, 89) sts]

2nd row (WS): bind off 4 sts, p1 in every st until SM, move the SM, 18 sts foll the diagram A, move the SM, p1 in every st until the end of row [76 (84, 94) sts]

Cont working these sts until the end.

3rd row (RS): knit until SM, move the SM, 18 sts foll the diagram A, move the SM, knit until the end of row.

4th row (RS): purl until SM, move the SM, 18 sts foll the diagram A, move the SM, knit until the end of row.

Rep 3rd and 4th row 3 (3, 5) times more.

Top part in cable stitch

Using col 2 work as foll:

1st row (RS): k3 (7, 12), 18 sts foll the diagram A, k8, 18 sts foll the diagram A, k8, 18 sts foll the diagram A, k3 (7, 12).

2nd row (WS): p3 (7, 12), 18 sts foll the diagram A, p8, 18 sts foll the diagram A, p8, 18 sts foll the diagram A, p3 (7, 12).

Rep 1st and 2nd row $6\frac{1}{4}$ ($6\frac{3}{4}$, 7)/16 (17, 18) cm more, approx.

Bind off all sts.

RIGHT FRONT

Using size US9/5.5 mm circular needles, 40"/100 cm cable and col 1, cast-on 42 (46, 50) sts and work 12 row rib 1/1 for band shaping.

Body

Using col 2, work in cable stitch.

1st row (RS): k3, place 1 SM, 10 sts foll the diagram B, place 1 SM, k4, place 1 SM, 18 sts foll the diagram A, place 1 SM, k7 (11, 15).

2nd row (WS): p7 (11, 15), move the SM, 18 sts foll the diagram A, move the SM, p4, move the SM, 10 sts foll the diagram B, move the SM, p3.

Rep 1st and 2nd row reaching $16\frac{1}{4}$ ($16\frac{1}{4}$, $16\frac{1}{2}$)/41 (41, 42) cm. As you work, move the SM upwards.

Neckline shaping

1st row (RS): k3, move the SM, 10 sts foll the diagram B, move the SM, k4, move the SM, 18 sts foll the diagram A, move the SM, k7 (11, 15).

2nd row (WS): bind off 4 sts, p1 in every st until SM, move the SM, 28 sts foll. the diagram A, move the SM, p4, move the SM, 10 sts foll the diagram B, p3.

3rd row (RS): knit until SM, move the SM, 10 sts foll the diagram B, move the SM, k4, move the SM, 18 sts foll the diagram A, move the SM, knit until the end of row.

4th row (RS): purl until SM, move the SM, 18 sts foll the diagram A, move the SM, p4, move the SM, 10 sts foll the diagram B, move the SM, knit until the end of row.

Rep 3rd and 4th row 13 (14, 17) times more.

Cont working the neckline.

1st row (RS): bind off 15 sts and work the rem sts foll the cables pattern.

2nd row (WS): work the sts as they appear.

3rd row (RS): work foll the pattern.

4th row (WS): work the sts as they appear.

Rep 3rd and 4th rows 8 times more.

Note: work row as given for back.

Bind off all sts.

LEFT FRONT

Using size US9/5.5 mm circular needles with 40"/100 cm cable and col 1, cast-on 42 (46, 50) sts and work 12 row rib 1/1 for band shaping.

Body

Using col 2, work in cable stitch.

1st row (RS): k7 (11-15), place 1 SM, 18 sts foll the diagram A, place 1 SM, k4, place 1 SM, 10 sts foll the diagram C, place 1 SM, k3.

2nd row (WS): p3, move the SM, 10 sts foll the diagram C, move the SM, p4 move the SM, 18 sts foll the diagram A, p7 (11, 15).

Rep 1st and 2nd row reaching $16\frac{1}{4}$ ($16\frac{1}{4}$, $16\frac{1}{2}$)/41 (41, 42) cm. As you work, move the SM upwards.

Armhole shaping

1st row (RS): bind off 4 sts, knit until SM, move the SM, 18 sts foll the diagram A, move the SM, k4, move the SM, 10 sts foll the diagram C, move the SM, k3.

2nd row (WS): p3, move the SM, 10 sts foll the diagram C, move the SM, p4, move the SM, 18 sts foll the diagram A, move the SM, purl until the end of row.

3rd row (RS): knit until SM, move the SM, 18 sts foll the diagram A, move the SM, k4, move the SM, 10 sts foll the diagram C, move the SM knit until the end of row.

4th row (RS): purl until SM, move the SM, 10 sts foll the diagram C, move the SM, p4, move the SM, 18 sts foll the diagram A, move the SM, knit until the end of row.

Rep 3rd and 4th rows 13 (14, 17) times more.

Neckline shaping

1st row (RS): work foll the cables pattern.

2nd row (WS): bind off 15 sts and work the rem sts as they appear. [23 (27, 31) sts]

3rd row (RS): work foll the pattern.

4th row (WS): work the sts as they appear.

Rep 3rd and 4th rows 8 times more.

Note: work row as given for back.

Bind off all sts.

FINISHING

On WS, join the shoulders, sewing first and last 23 (27, 31) sts of front and back. Sew the side edges of 2 panels.

SLEEVES

Using size US9/5.5 mm circular needles with 24"/60 cm cable and col 2, pick-up and knit 68 (72, 76) sts around armhole, place SMb and work in the round. Move the SM upwards, as you work.

Cont in stocking st in round, alternating the colors and decreasing as foll.:

Knit 3 rounds.

Use col 1 yarn.

Knit 4 rounds.

Round with decreases: k2tog, knit until 3 sts before the end, skp, k1.

Knit 11 rounds.

Round with decreases: k2tog, knit until 3 sts before the end, skp, k1.

Knit 1 round.

Use col 2 yarn.

Knit 11"/28 cm more and, at the same time, work the round with the increases, every 12 rounds (=5 rounds with decreases). [54 (58, 62) sts]

Use col 1 yarn.

Knit 8 rounds.

Use col 2 yarn.

Knit 6 rounds.

Use col 1 yarn.

Knit 1 round.

Round with decreases: knit, decreasing 1 st 12 (12, 14) times, uniformly.

Complete the sleeve and work 16 rounds rib 1/1 for band shaping.

At last, bind off all sts as they appear.

Work the second sleeve like first one.

BAND OF RIGHT FRONT

Using US9/5.5 mm circular needles with 40"/100 cm cable

and col 1 yarn, pick-up 93 (95, 101) sts along the right front edge, then work 11 row rib 1/1. Bind off all sts as they appear.

BAND OF LEFT FRONT

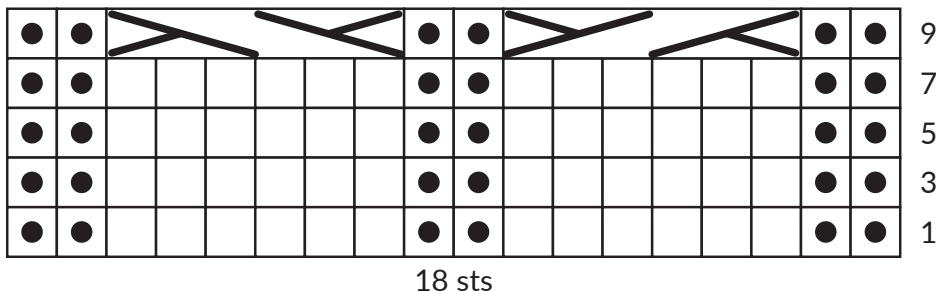
Work like band of right front edge.

COLLAR

Using US9/5.5 mm circular needles with 40"/100 cm cable and col 1 yarn, pick-up 108 (110, 112) sts around neckline and work 16 row rib 1/1. Bind off all sts as they appear.

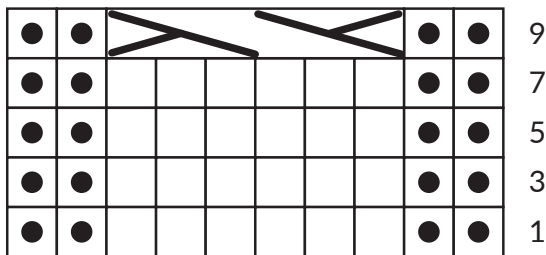
Hide the ends, then wash and block the garment according to required measures.

Diagram A: 2 cable motif



18 sts

Diagram B: left-crossed cable



10 sts

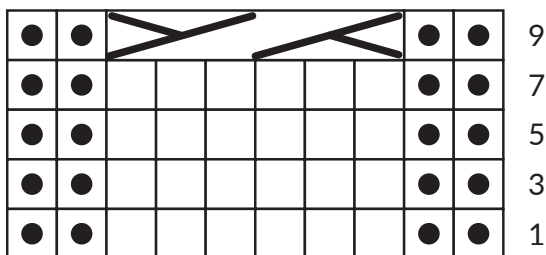


6-st right-crossed cable



6-st left-crossed cable

Diagram C: right-crossed cable



10 sts

On even rows (on WS, not shown in diagram) work sts as they appear.

Repeat from rows 1 to 10 until you reach the required length.