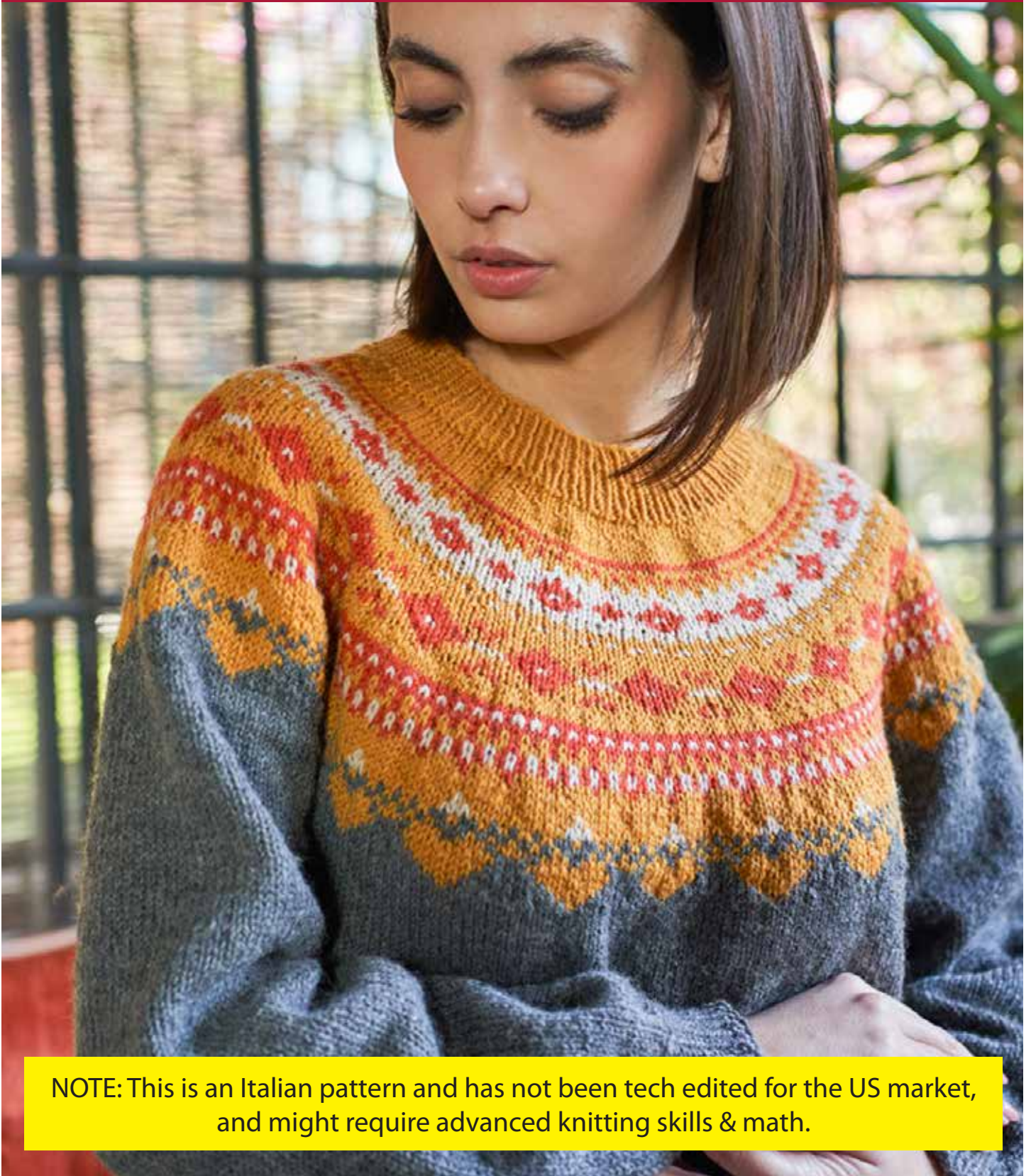




THE COLOR EVOLUTION



NOTE: This is an Italian pattern and has not been tech edited for the US market, and might require advanced knitting skills & math.

MATERA DRESS

MATERIAL

Matera by Laines du Nord:

Main color: 7 (8, 9) balls (Charcoal, col. 16)

Color 1: 2 (2, 3) balls (Pumpkin, col. 06)

Color 2: 1 (1, 2) balls (Orange, col. 07)

Color 3: 1 (1, 2) balls (Tan, col. 05)

US4/3.5 mm and US7/4.5 mm circular needles; 40"/100 cm and 24"/60 cm cables

Darning needle

Stitch marker

Pins

Scissors

Tape measure

GAUGE

22 sts and 32 rows over 4"/10 cm square in stocking st. using US7/4.5 mm needles.

If needed, to get the right tension, use different size needle.

ABBREVIATIONS

WS = wrong side of work

SM = stitch marker

r. = round(s)

st.(s) = stitch(es)

incr. = increase

col. = color

k = knit

tog. = together

rep. = repeat

p = purl

foll. = follow(ing)

k2tog = knit 2 stitches together

MC = main color

NOTES

Work the diagrams in stocking st. in the round (knit every round.) Read the diagrams from bottom to top and from right to left. Work the garment top-down with round yoke.

Place 1 SM at beginning of every round and move it upwards as you work.

SKILL LEVEL: Experienced

SIZES

S (M, L)

Measures of dress shown by the picture (size M)

MEASUREMENTS

Chest circumference: 42½"/108 cm

Total height: 30¾"/78 cm

Side length (from beginning of armhole to lower band): 22½"/57 cm.

Sleeves length (from beginning of armhole to lower band): 12½"/32 cm.

Circumference of top of sleeve: 17¾"/45 cm.

STITCHES USED

Rib 1/1 (in round)

1st round and next rounds: (k1, p1) rep. across the entire round.

Stocking stitch in the round

1st round and next rounds: knit.

Make one: using left needle, lift the yarn between right and left needle, inserting the needle under the yarn from front to back, then knit it through back loop.

Invisible closing in round: slip 1st st. from left to right needle. Pass 2nd st. from right needle over 1st st. and drop it. After fastening the work, pull 2 yarns together (yarn from ball and cast-on end); the stitch you have dropped will tighten itself and make one knot, shaping the invisible closing and fastening the ring. At last, move the 1st st. from right to left point, then place SM on right point.

INSTRUCTIONS

YOKE

Collar

Using circular needles size US4/3.5 mm and col. 1 yarn, cast-on 112 (116, 120) sts. Close in round working first and last st tog. Be careful not to twist the sts.

From 1st to 12th round: every round in rib 1/1.

Using US7/4.5 mm points, work the yoke in jacquard motif.

From 13th to 15th round: knit.

16th round: knit incr 38 (44, 50) sts uniformly. [150 (160, 170) sts.]

From 17th to 19th round: knit.

From 20th to 36th round: rep the diagram A from right to left.

37th round: knit incr 40 (40, 50) sts uniformly. [190 (200, 220) sts.]

From 38th to 46th round: rep the diagram B from right to left.

47th round: knit incr 86 (88, 92) sts uniformly. [276 (288, 312) sts.]

From 48th to 57th round: rep the diagram C from right to left.

58th round: knit incr 48 (60, 60) sts uniformly. [324 (248, 372) sts.]

From 59th to 70th round: rep the diagram D from right to left.

Cont using MC and knit 2 (3, 6) rounds, then leave the sts of sleeves as follow: for first sleeve, leave first 60 (64, 68) sts onto a waste yarn; for undersleeve cast-on 4 (6, 8) sts; for front knit 102 (110, 118) sts; for second sleeve leave first 60 (64, 68) sts onto waste yarn; for undersleeve cast-on 4 (6, 8) sts; for back knit 102 (110, 118) sts.

There are 212 (232, 252) sts and you have shaped the armholes. Cont working the sts of front and back in the round.

BODY

Using MC, cont in stocking st reaching 20 (20, 20¾)"/51 (51, 53) cm from beg of armhole, approx.

For lower band, work 16 rounds rib 1/1.

Bind off all sts as they appear.

SLEEVES (x 2)

Move 60 (64, 68) sts you have left for first needle onto US7/4.5 mm circular needles and 24"/60 cm cable, then knit 4 (6, 8) sts of the undersleeve; place 1 SM at center of these 4 (6, 8) sts and start working in round.

There are 64 (70, 76) sts.
 Work in stocking st reaching 15¾ (15¾, 16)"/40 (40, 41) cm total heigh.
 For cuff shaping, start the decreases across next round.
Round with decreases: knit decreasing 20 (22, 24) sts uniformly.
 For lower band of sleeve, work 12 rounds rib 1/1.

Bind off all sts as they appear.
 Work the second sleeve like first one.
FINISHING
 Hide the ends on WS. Wash and block the garment at stated measures.

