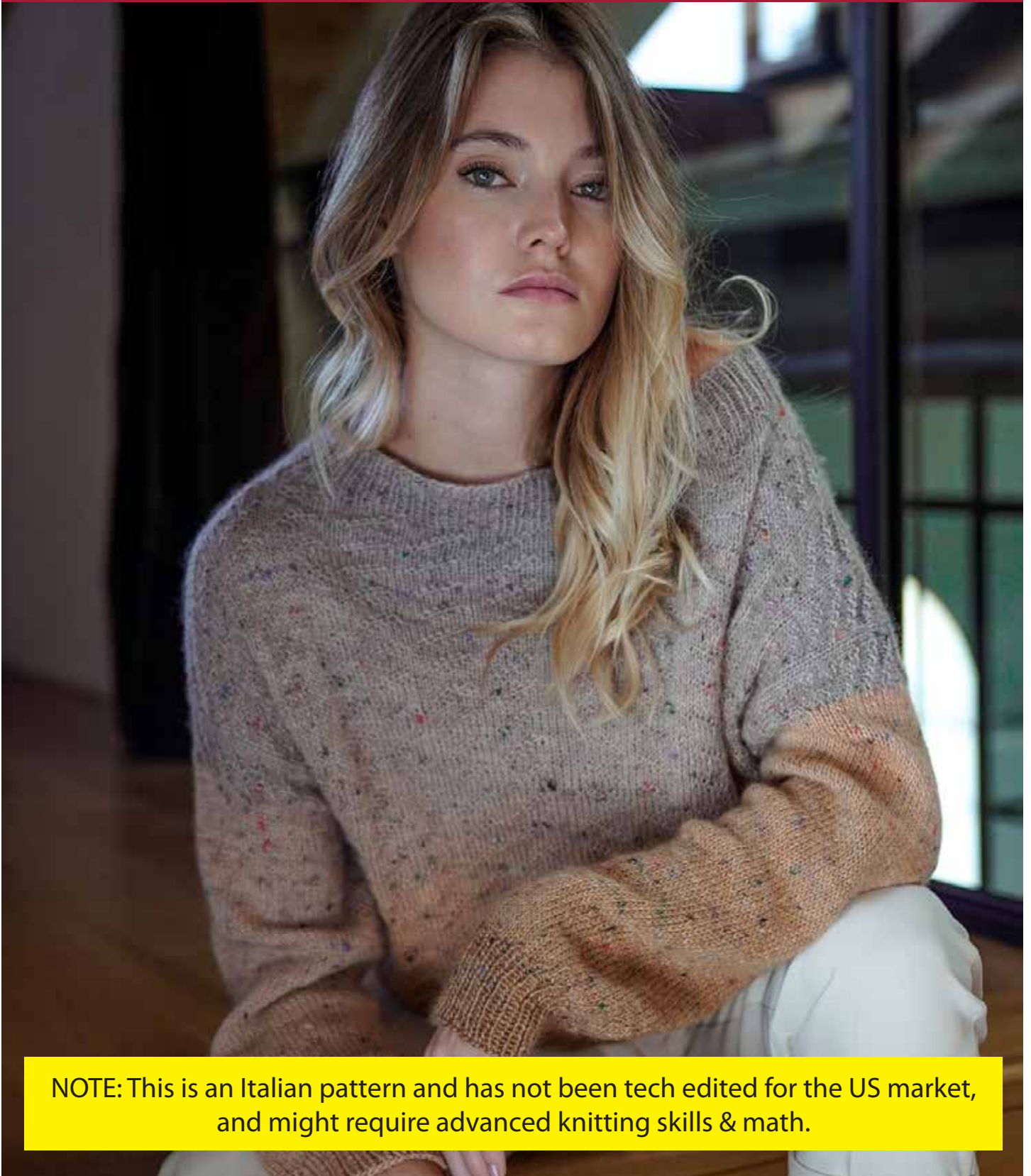




THE COLOR EVOLUTION



NOTE: This is an Italian pattern and has not been tech edited for the US market, and might require advanced knitting skills & math.

TWEED SWEATER

MATERIAL

Poema Tweed by Laines du Nord: Color 501: 2 (3) balls
Sizes US4/3,5 mm and US6/US6/4 mm circular needles,
40"/100 cm and 24"/60 cm long, for sleeves
Stitch markers
Tapestry needle

GAUGE

24 stitches and 30 rows = 4 x 4"/10 x 10 cm in stocking st.
with needles US6/4 mm.
Adjust the needles size if it's needed to achieve the correct
gauge.

ABBREVIATIONS

st(s) = stitch(es);
SM = stitch marker;
SMb = stitch marker of the beginning of the round;
sSM = slip SM;
K = knit;
P = purl;
RS = right side;
WS = wrong side;
K2tog = knit 2 sts together;
SKP = slip 1, K1, pass slipped stitch over;
m1 = make one by picking up one a loop between two
stitches and knitting into the back of the new stitch.
rep ** = repeat from * to *

NOTES

Charts: when you work in rounds read the charts always
from right to left; when you work back and forth read the
charts from right to left on RS rows and from left to right on
WS rows.

This project is worked in rounds from the bottom up in one
piece until the underarm. The upper part is worked back and
forth in two separate pieces, front and back. Sleeves are
worked in rounds picking up stitches along the armhole.

SIZES - S (M, L)

MEASURES OF THE FINISHED GARMENT

Size in photos: S/M
Bust circumference: 104 cm
Total length: 50 cm
Length from underarm to hem: 26 m

STITCHES USED

Stocking stitch;

1/1 rib st

* K1, P1 * rep ** to the end.

Next Round: work sts as they appear.

INSTRUCTIONS

With needles 3,5mm cast on 256 (288) 1 sts, insert the marker
to mark beginning of row, SMb, and start to work in the round
ensuring that the work is not twisted (to join in the round:
Ktog the first and the last cast-on stitch). [= 256 (288) sts]

Rounds 1-8 : * K1, P1 * rep ** to the end.

Change to needles US6/4 mm

Body

Round 1: K 64 (72), place SM, K 128 (144), place SM, K 64
(72)

Round 2: follow Chart A until SM, sSM, follow Chart B until
SM, sSM, follow Chart A to the end.

Work Round 2 until the piece measures about 10¼ (10¾)"/26
(27) cm or until the desired length.

Front [128 (144) sts]

Now divide the work in two parts and work back and forth
only on the first half of stitches.[128 (144) sts]

Row 1 (RS): follow Chart A until SM, sSM, follow Chart B to
the end

Row 2 (WS): follow ChartB untilSM, sSM, follow ChartA to
the end

Repeat Rows 1 and 2 until the sweater measures 9½ (9¾)"/24
(25 cm) from the underarm

Leave on hold these sts and work the Back.

Back [128 (144) sts]

Work back and forth the other half of stitches. [128 (144)
sts]

Row 1 (RS): follow Chart B until SM, sSM, follow Chart A to
the end.

Row 2 (WS): follow Chart A until SM, sSM, follow Chart B
to the end.

Leave sts on hold.

SHOULDER

Sew with the Kitchener Stitch the 32 (38) stitches for each
shoulder, joining the front at the back.

Leave the central 64 (68) sts on hold for the neck.

SLEEVES (X2)

Work in the round

With US6/4 mm needles pick up and knit 80 (90) stitches
along the armhole.

Place SM at the underarm and start working in the round as
follows:

K12 rounds

Decrease round: K2tog, K to 3 sts before end, SKP, K1
K8 rounds

Decrease round: K2tog, K to 3 sts before end, SKP, K1
K8 rounds

Decrease round: K2tog, K to 3 sts before end, SKP, K1
K8 rounds

Decrease round: K2tog, K to 3 sts before end, SKP, K1
K8 rounds

Decrease round: K2tog, K to 3 sts before end, SKP, K1
K8 rounds

Decrease round: K2tog, K to 3 sts before end, SKP, K1
K40 rounds

Decrease round: K and and decrease evenly 4 sts (=K2tog)
K2 rounds

Decrease round: K and and decrease evenly 16 (20) sts
(=K2tog). [48 (54) sts]

Cuff

Change to needles US4/3.5 mm

Rounds 1- 18: * K1, P1 * rep **to the end.

Loosely cast off.

Make the second sleeve.

NECK

With US6/4 mm needles pick up and knit 130 (138) stitches along the neckline.

Place SM and start working in the round as follows:

Rounds 1-14: * K1, P1 * rep ** to the end

Loosely cast off.

Weave in all ends. Wash and block garment carefully.

CHART A

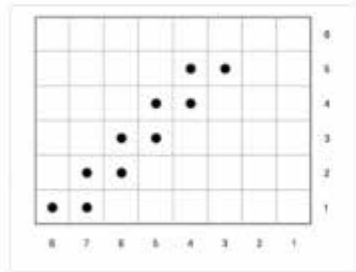
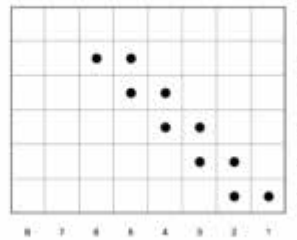


CHART B



KEY

- K on RS and P on WS
-