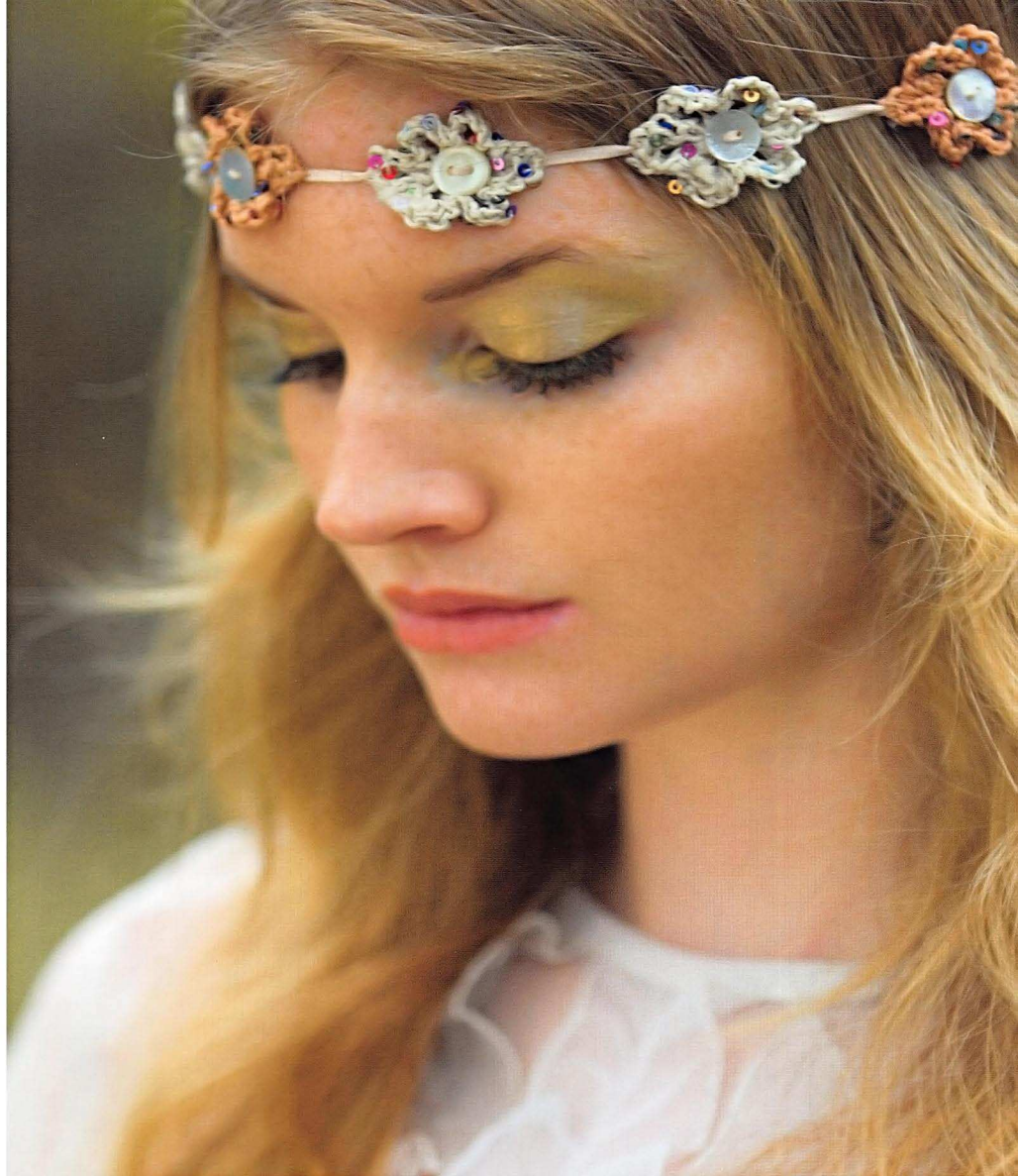


A close-up portrait of a young woman with long, wavy blonde hair and blue eyes. She is wearing a headband with several decorative, knotted fabric ornaments in shades of orange, white, and brown. Her eyes are heavily lined with bright yellow eyeshadow. She is wearing a white, ruffled, high-collared garment. The background is a soft, out-of-focus green and blue.

Louisa Harding

Daisy Chain





# Daisy Chain

## Yarn

Knitted in Coquette

A. sh. 1 Natural 1x 25g ball

B. sh. 4 Gold 1x 25g ball

## Needles

Pair of 4 mm (US 6) knitting needles

## Buttons

8 x small mother of pearl

Approx 1 metre (40 in) x 2mm (1/16 in) wide ribbon

## Tension/gauge

22 sts x 30 rows to 10cm /4in square measured over st st using 4 mm (US 6) knitting needles.

**Flowers** (Make 4 using yarn A, 4 using yarn B)

Using 4 mm (US 6) needles cast on 36 sts.

**Row 1:** \*K1, cast off 4 (2 sts on needle), rep from \* to end. (12 sts)

Thread yarn through rem sts, pull tight, secure with a few stitches.

## Making up

Sew flowers into place onto ribbon, starting at centre front, and working toward the back leaving 1 cm (3/8 in) between each flower.

Sew a button in the centre of each flower.

Wear as a headband, necklace or bracelet.

# Daisy Chain

is from



[#009 - Swallowtails](#)  
by Louisa Harding



**Design Credit:** Louisa Harding  
**Photography Credit:** Stephen Jessup

All Knitting Fever publications are intended for personal use only. Knitting Fever, Inc. (KFI) does not guarantee the final result. Measurements, gauge, etc. are included as a guideline. If you have any questions about this project, please contact us at [knittingfever.com](http://knittingfever.com).

**Copyright © 2014 Knitting Fever, Inc.** Copy or duplication for resale is strictly prohibited.