



THE COLOR EVOLUTION



ARROW SWEATER

MATERIALS

Baby Soft by Laines du Nord
3 x 50grm balls of each of the following:
green 602
light green 21
yellow 604
pink 142
white 111
US4/3.5mm crochet hook

SIZE: 42"

NOTES

Back and front Work every panel from centre of lower edge. Every time you change the color, join next color in last yo of last st of previous. row. While you are working, hide the ends through the sts.

ABBREVIATIONS

RS = right side of work
WS = wrong side of work
st/sts = stitch/stitches
ch = chain stitch
sc = single crochet
dc = double crochet
tr = treble crochet
rep. = repeat
foll = follow / following
beg = begin / beginning
cont. = continue

FRONT PANEL

Using yellow and US4/3.5mm crochet hook make 4ch, sl st to first ch to form a ring.

Row 1: 4ch (counts as 1tr) (3dc, 3ch, 3dc, 1tr) into ring.

Break off yarn, turn,

Row 2: Using light green, work (4ch and 3dc) into last tr of previous row, (3dc, 3ch, 3dc) into 3ch-corner-space, (3dc, 1tr) into 4ch of previous row. Break off yarn, turn.

Row 3: Using green, work (4ch and 3dc) into last tr of previous row, 3dc in next space between 2 groups of dc, (3dc, 3ch, 3dc) into 3ch-corner-space, 3dc into next space between 2 groups of dc, (3dc, 1tr) into 4ch of previous row. Break off yarn, turn.

Row 4: Using pink, work (4ch and 3dc) in last tr of previous row, (3dc in next space between 2 groups of dc) twice, (3dc, 3ch, 3dc) 3ch-corner-space, (3dc in next space between 2 groups of dc) twice, (3dc, 1tr) in 4ch of previous row. Break off yarn, turn.

Row 5: Using white yarn, work (4ch and 3dc) in last tr of previous row, 3dc in each space between the groups of 3dc until next 3ch-corner-space, (3dc, 3ch, 3dc) in 3ch-corner-space, 3dc in each space between the groups of 3dc until the end of row, (3dc, 1tr) in 4ch of previous row, Break off yarn, turn.

Cont repeating row 5 alternating the colors as follows: yellow, light green, green, pink, white.

After working row 19 cont with no side increases like shown in diagram 2 AT THE SAME TIME alternating the colors as already set.

For Neck shaping

At the end of row 34 (45cm) cont working each side of neckline separately following diagram 3.

For Sleeve Shaping at the end of row 7 cont working on one side of the panel.

Work the increases at the undersleeve and the decreases at the top part of the sleeve, in order to keep the same amount of sts.

Cont following the diagram 3 repeating row 12 and row 13 three times more.

Then work from row 2 to row 35 as stated.

Rejoin yarn and work the other side of the panel to complete the neckline and shape the second sleeve, reversing all shaping.

BACK

Work as given for front.

FINISHING

Place one panel on the other one (RS against RS) and using darning needle and white yarn, overcast the edges of the shoulders, the top of the sleeves, the undersleeve and sides seams.

Finish the neckline, sleeves and bottom edge of sweater as follows:

1st round: join the white at one st of the edge and work in sc around it making sure that the total amount of dc is multiple of 4sts, sl st to top of first st.

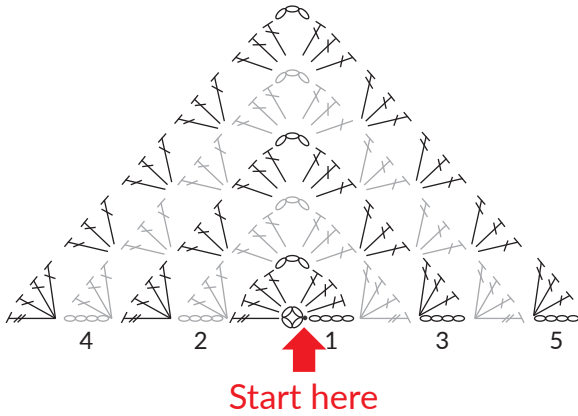
2nd round: 3ch (counts as 1dc), 1dc in each of the next 3sts, 1ch, skip 1 st. * 1dc in each of the next 3sts, 1ch, skip 1 st, rep from * until the end of round, sl st to top of first st.

3rd and 4th round: 1ch, 1sc in each st to end, sl st to top of 1st st.

5th round: 1ch, 1 crab st. in every st. (Crab stitch = sc from right to left)

Break off yarn.

Chart 1
Beginning of the granny motif



- chain
- slip stitch
- ┆ double crochet
- ┆ treble crochet

Chart 2
Straight working at the hips

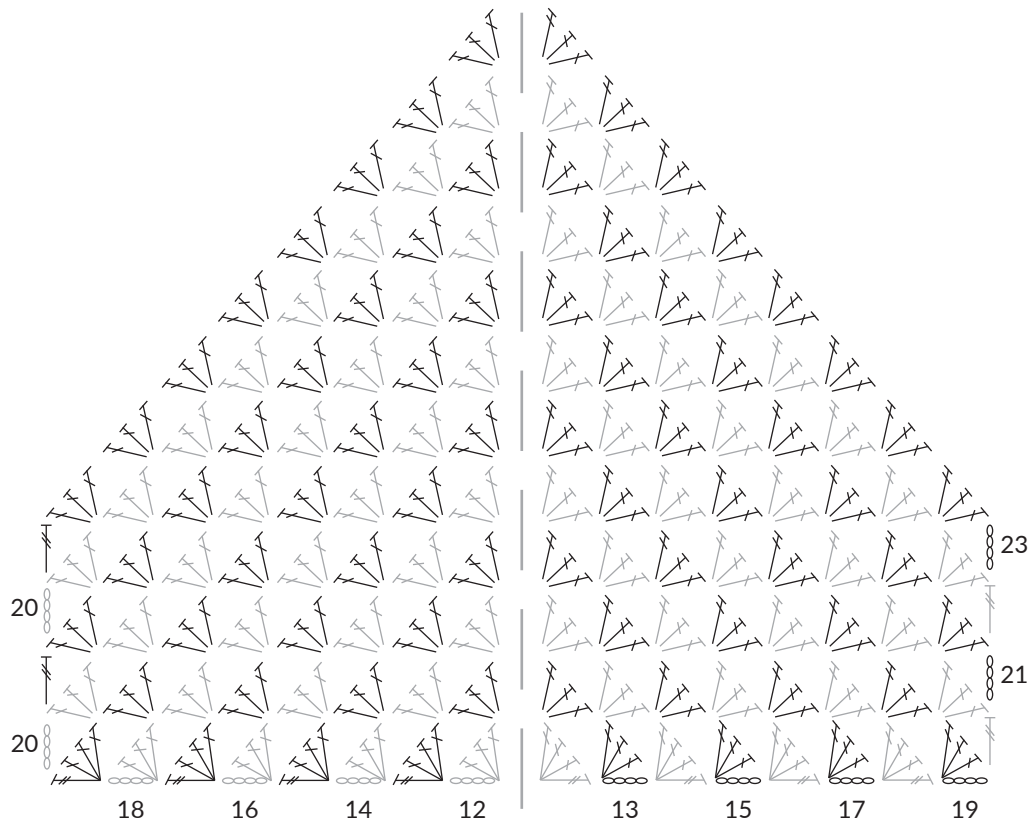


Chart 3
Top of the front/back, with neckline and sleeve

