



**Size:** UK 10 (14) - US 6 (10) - EU 36 (40)

**Note:** figures in brackets ( ) refer to larger size.

Where only one figure is given this refers to both sizes.

**Skill Level:** advanced

**How much yarn:** 3 (4) balls of 50g (275m)

of Wall Street yarn (37% SuperKid Mohair, 37% Alpaca Superfine, 26% Polyamide), shade no. 30122

**Needles:** A pair of 5.00mm knitting needles

**Sewing needle:** Yarn needle with rounded point

**Other items:** A stitch-holder

## STITCHES

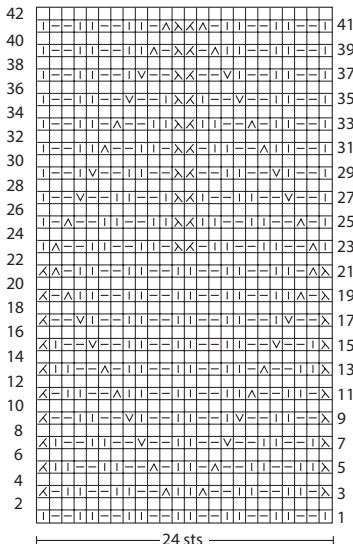
**Using needles:** tubular stitch - Stocking stitch (st st) Reverse stocking stitch (rev st st) - K2, P3 rib.

**DIAMOND STITCH:** work over a multiple of 24 sts, following diagram and key. Each square of diagram corresponds to a stitch.

## TENSION

17 sts and 22 rows measure 10cm square over K2, P3 rib with 5.00mm needles. Take time to check tension before starting work: it is essential to work to the stated tension to achieve success.

## DIAMOND STITCH



## KEY

- | = K1
  - = P1
  - λ = SK1P
  - ∧ = K2tog
  - ∇ = inc 1 stitch knitways
  - △ = inc 1 stitch purlways
- On even rows (WS of work) knit the K sts and purl the P sts.
- Each square of diagram corresponds to a stitch.

## INSTRUCTIONS

**Back:** with 5.00mm needles cast on 74 (80) sts and work 4 rows in tubular st. Cont in K2, P3 rib starting and ending first row with K3 and dec 1 (0) st. When work measures 42 (44)cm from beg,

shape armholes. Cast off 4 sts at beg of next 2 rows, then dec 1 st at each end on next and every following alternate row 4 times. When armhole measures 18 (20)cm, cast off 12 (14) sts at beg of next 2 rows and leave rem 33 (34) sts on a stitch-holder.

**Front:** cast on 74 (80) sts, work 4 rows in tubular st and cont to work in Diamond st, starting and ending with 1 selvedge st for smaller size and 4 sts in st st for larger size. When work measures 42 (44)cm from beg, shape armholes. Cast off 4 sts at beg of next 2 rows, then dec 1 st at each end on next and every following alternate row 4 times. When armhole measures 13.5 (14.5)cm, shape neck: cast off centre 22 (24) sts, join another ball and continue separately on either side, casting off on neck edge on next and every following alternate row: 3 sts once, 2 sts once and 1 st once. When neck shaping measures 4.5 (5.5)cm cast off the rem 12 (14) sts on either shoulder.

**Sleeves:** for each Sleeve, cast on 32 (34) sts and work in K2, P3 rib, starting and ending first row with K2 (3). Only for larger size: Inc 1 st at each end on 1st row. For both sizes: inc 1 st at each end on 13th row and every following 12th row 6 times, then every following 8th row 3 times and, only for larger size, on next 4th row once. There are 50 (56) sts. When Sleeve measures 44 (46)cm from beg, shape top: cast off 4 sts at beg of next 2 rows, then dec 1 st at each end on next and every following alternate row 16 (18) times. When sleeve top measures 15.5 (17.5)cm, cast off rem 10 (12) sts.

## FINISHING

Sew right shoulder seam. **Neck-border:** with RS and 5.00mm needles pick up and K 41 (46) sts around Front neck-edge and K the 33 (34) sts from stitch-holder on Back neck. There are 74 (80) sts. Starting with a P row on WS work 5 rows in st st, then work other 32 rows in rev st st. Cast off. Sew left shoulder seam. Sew neck-border seam as follows: first 6 rows on WS, as usually, and following 32 rows on RS, because this border will be folded outside. Set in Sleeves, then sew sleeve and side seams.

**Note:** wash garment carefully at low temperatures, with a very little fabric softener. Lay the garment to dry on a flat surface, without ever hanging it.