



Two-Piece Boho Chic Suit

LANA GATTO®

Size: UK 10 - US 6 - EU 36

Skill Level: advanced

How much yarn: 12 balls (each ball 50g and 125m) of Milo yarn (100% Cotton) shade no. 8705

Crochet hook: A 3.75mm crochet hook

Sewing needle: Yarn needle with rounded point

Other items: 4 buttons; tubular elastic as long as needed

STITCHES

Using crochet hook: chain (ch) - Slip stitch (sl st)

Double crochet (dc) - Treble (tr)

ARCH STITCH: follow instructions.

TENSIONS

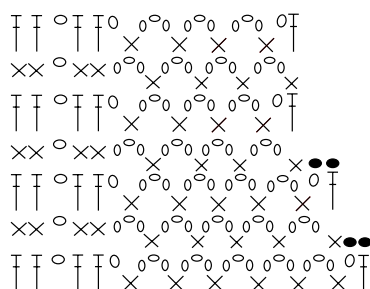
17 trebles measure 10cm in length with 3.75mm crochet hook. 7 arches and 14 rows measure 10cm square over arch st with 3.75mm crochet hook. First 5 rows for border measure 5cm in height.

Take time to check tension before starting work: it is essential to work to the stated tension to achieve success.

INSTRUCTIONS JACKET

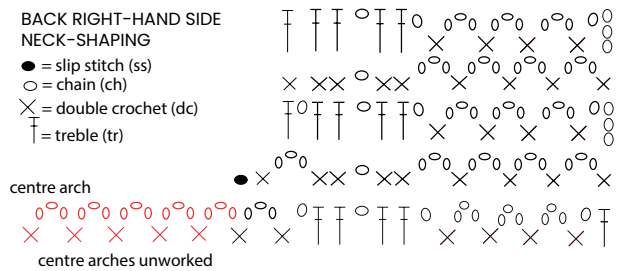
Back: with 3.75mm hook ch63. **1st row:** work 1 tr in each ch, but ch3 corresponding to 1st tr at beg of row (there are 63 tr); turn. **2nd and 4th rows:** ch4 (= first tr and ch-1 arch), * miss 1 st, 1 tr into next st, ch 1; rep from * to last 2 sts; miss 1 st and 1 tr into last st; turn. **3rd and 5th rows:** work 1 tr in each st and ch of previous row, turn. **6th row:** ch4, miss 1 tr, (1 dc into next st, ch3, miss 1 st) 5 times, 1 dc into next st, ch1, miss 1 st, 1 Motif (= 1 tr into each of next 2 sts, ch1, miss next st, 1 tr into each of next 2 sts), ch1, miss 1 st, (1 dc into next st, ch3, miss 1 st) 11 times, 1 dc into next st, ch1, miss 1 st, 1 Motif, ch1, miss 1 st, (1 dc into next st, ch3, miss 1 st) 5 times, 1 dc into next st, ch1, miss 1 st, 1 tr into last st, turn. **7th row:** ch6 (=

DIAGRAM OF BACK
RIGHT-HAND SIDE ARMHOLE



● = slip stitch (ss) † = treble (tr)
○ = chain (ch) × = double crochet (dc)

first tr and ch-3 arch), (1 dc into next ch-3 arch, ch3) 5 times, 1 dc into each of next 2 tr, ch1, 1 dc into each of next 2 tr, ch3, (1 dc into next ch-3 arch, ch3) 11 times, 1 dc into each of next 2 tr, ch1, 1 dc into each of next 2 tr, ch3, (1 dc into next



ch-3 arch, ch3) 5 times, 1 tr into last st, turn. Rep 6th and 7th rows throughout. When 18 rows have been worked (and work measures 14cm from beg) shape armholes. Dec arches at each end as shown in diagram (for left armhole, reverse shaping). When 35 rows have been worked (and work measures 26cm from beg), leave centre 9 arches unworked and cont separately on either part, dec arches as shown in diagram. When work measures 31 cm from beg, fasten off the sts on each shoulder.

Right Front: with 3.75 mm hook ch33. Work first **5 rows** as Back. **6th row:** ch4, miss 1 tr, (1 dc into next st, ch3, miss 1 st) 14 times, 1 dc into next st, ch1, miss 1 st, 1 tr into last st, turn. **7th row:** ch6, (1 dc into next ch-3 arch, ch3) 14 times, 1 tr into last st, turn. Rep 6th and 7th rows throughout. When 18 rows have been worked (and work measures 14cm from beg), shape armhole as Back. When work measures 31 cm from beg, fasten off.

Left Front: work as Right Front reversing shaping.

Sleeves: with 3.75 mm hook ch41. Work first **5 rows** as Back. **6th row:** ch4, miss 1 tr, * 1 dc into next st, ch3, miss 1 st; rep from * until last 3 sts, 1 dc into next st, ch1, miss 1 st, 1 tr into last st, turn. **7th row:** ch6, * 1 dc into next ch-3 arch, ch3; rep from * to last st, 1 tr into last st, turn. Rep 6th and 7th rows throughout. At the same time, inc at each end 1 arch on 21st row (= there are 21 arches). When 40 rows have been worked (and work measures 30cm from beg), shape top sleeve decreasing arches at each end, as given for armholes of Back and Fronts. When 16 rows have been worked (and work measures 11cm from top beg), fasten off.

INSTRUCTIONS SKIRT

Work top down, starting from waistedge. Ch130, join with a ss to form a ring. **1st round:** ch3 (corresponding to first tr), 1 tr in each ch, end with a ss into 3rd of first 3 ch. There are 130 tr. **2nd and 4th rounds:** ch4 (corresponding to first tr and ch-1 arch), * miss next st, 1 tr into next st, ch 1; rep to all around ending with a ss into 3rd of first 4 ch. **3rd and 5th rounds:** ch3, 1 tr in each st or ch, ending with a ss into 3rd of first 3 ch. **6h round:** ch3, 1 tr into

next st, ch1, miss next st, 1 tr into each of next 2 sts, * ch1, (1 dc into next st, ch3, miss 1 st) 5 times, 1 dc into next st, ch1, miss next st, 1 Motif (as given for Jacket) *; rep from * to * twice, ** ch1, (1 dc into next st, ch3, miss 1 st) 12 times, 1 dc into next st, ch1, miss next st **, 1 Motif, rep from * to * twice, rep from ** to ** once, end with a ss into 3rd of first 3 ch. There are 6 arch-columns separated by Motifs with 4 trebles. **7th round:** * in correspondence of a Motif work 1 dc into each of first 2 tr, ch1, 1 dc into each of next 2 tr; ch 3, in each arch work 1 dc and ch3; rep from * all around ending with a ss into first dc. Rep 6th and 7th rounds 20 more times, then rep 6th round once (= 48 rounds have been worked). Now create skirt panels (or wedges) as follows: divide the 4 trebles of 6 Motifs, working Arch stitch at centre. **49th round:** * 1 dc into each of next 2 dc, ch2, 1 dc into each of next 2 dc, cont in Arch st as before until to next group; rep from * all around, ending with a ss into first dc. **50th round:** ch3, 1 tr into next dc, ch1, 1 dc into next ch2-arch, ch1, 1 tr into each of next 2 dc, cont in Arch st until to next group, * 1 tr into each of next 2 dc, ch1, 1 dc into next ch2-arch, ch1, 1 tr into each of next 2 dc, cont in Arch st until to next group; rep from * all around, ending with a ss into 3rd of first 3 ch. **51st round:** * 1 dc into each of next 2 sts, (ch3, 1 dc into ch-1 arch) twice, ch3, 1 dc into each of next 2 dc, cont in Arch st until to next group; rep from * all around, ending with a ss into first dc. Cont to work in this manner other 28 rounds, increasing number of arches between Motif sts, but keeping unchanged the number of 6 column-arches. **80th round:** work in dc as follows:

1 dc into each Motif-st and 3 dc into each ch-arch, ending with a ss into first dc (the finished skirt measures 58cm in length). Fasten off. On opposite side of beg ch, work a round of trebles (each tr in correspondence of a tr on 1st round) and 1 round of dc. While working, insert tubular elastic cut in size.

FINISHING

Jacket: sew shoulder seams. **Neck border:** join yarn with a ss to first st on Right Front and cont to work along neck-shaping until to last st on Left Front, as follows: **1st row:** work a row of dc, working 2 or 3 dc in each arch or treble, in order to have 83 dc; turn. **2nd row:** ch3 (= first tr), 1 tr in each dc of previous row, turn. **3rd and 5th rows:** ch 4 (= first tr and ch1-arch), * miss next st, 1 tr into next st, ch1; rep from * to last 2 sts, miss 1 st and work 1 tr into last st, turn. **4th and 6th rows:** ch3 (= first tr), 1 tr in each tr and ch1-arch of previous row, turn. At end of 6th row, fasten off. Then join yarn with a ss to first st on 6th row of Neck border, to correspond Left Front, and work as follows: **1st row:** work a row of dc along border and edge of Front. **2nd and 3rd rows:** work a row of dc only along Front edge. **4th row:** work a row of dc, opening 4 buttonholes: the first after first dc, the last 2 sts before last st and the others evenly spaced. For each buttonhole, ch3 and miss 3 sts. **5th row:** work a row of dc, working 1 dc into each st and 3 dc into each ch3-buttonhole. At end, fasten off. Work a border as previous along border and edge of Right Front, omitting buttonholes. Set in sleeves. Sew side and sleeve seams. Sew buttons.