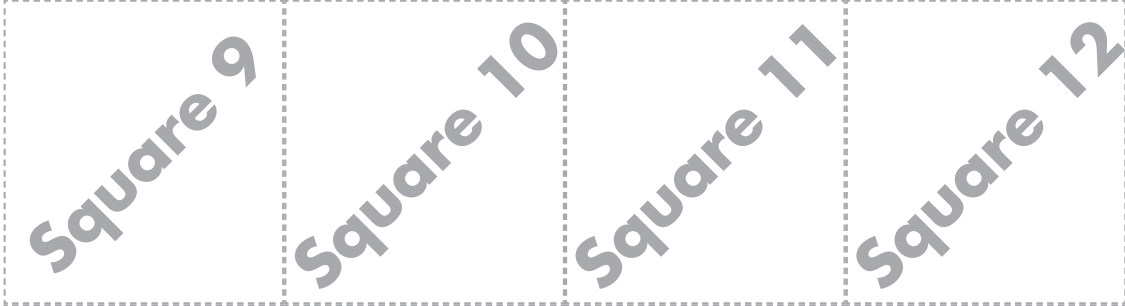




NORO

MAGAZINE

A Voyage East



A Voyage East

●●●○ INTERMEDIATE

Design by Deborah Newton

Finished Measurements

Approx, before edging 40 x 50in/102 x 127.5cm.

Materials

- 4 x 50g skeins of Noro *Silk Garden* in #84.
- 2 x 50g skeins of Noro *Silk Garden* in #205.
- 2 x 50g skeins of Noro *Silk Garden* in #208.
- 1 x 50g skein of Noro *Silk Garden* in #47.
- 1 x 50g skein of Noro *Silk Garden* in #203.
- 3 x 50g skeins of Noro *Silk Garden Solo* in #01.
- 1 x 50g skeins of Noro *Silk Garden Solo* in #03.
- 1 x 50g skeins of Noro *Silk Garden Solo* in #07.
- 1 x 50g skeins of Noro *Silk Garden Solo* in #11.
- 1 x 50g skeins of Noro *Silk Garden Solo* in #33.
- 1 x 50g skeins of Noro *Silk Garden Solo* in #35.
- 1 x 50g skeins of Noro *Silk Garden Solo* in #43.
- 1 x 50g skeins of Noro *Silk Garden Solo* in #61.
- One pair size US 8/5mm needles, or size to obtain given gauge.
- Size US 7/4.5mm circular knitting needle, 47in/120cm for edging.
- Tapestry needle.

Gauge

16 sts and 24 rows = 4in/10cm over St st using size US 8/5mm needles.

TAKE TIME TO CHECK GAUGE.

General and Knitting Abbreviations

approx approximately; **beg** begin (ing); **CC** contrasting color; **cm** centimeter(s); **cn** cable needle; **cont** continue (ing); **dec** decrease (ing); **dpn** double-pointed needle(s); **est** established; **fol** follow(s) (ing); **g** gram(s); **in** inch(es); **inc** increase (ing); **k** knit; **kfb** knit into front and back of stitch; **LH** left-hand; **mm** millimeter(s); **MC** main color; **M1** make one (see glossary); **p** purl; **pat**(s) pattern(s); **pm** place marker; **psso** pass slip stitch(es) over; **rem** remain(s) (ing); **rep** repeat; **rev** reverse(ing) (ed); **RH** right-hand; **rnd(s)** round(s); **RS** right side; **SKP** slip 1, knit 1, pass slip stitch over; **SK2P** slip 1, knit 2 stitches together, pass slip stitch over k2tog; **S2KP** slip 2 stitches together knitwise, knit 1, pass slip stitches over knit 1; **sl** slip; **sm** slip marker; **ssk/ssp** slip, slip, knit/purl (see glossary); **st(s)** stitch(es); **St st** Stockinette stitch; **tbl** through back loop; **tog** together; **WS** wrong side(s); **wyib** with yarn in back; **wyif** with yarn in front; **yo** yarn over (hook or needle); * repeat directions following * as many times as indicated; [] repeat directions inside brackets as many times as indicated.

Glossary

bind off To finish off an edge and keep stitches from unraveling by lifting the first stitch over the second, the second over the third, etc. (UK: cast off).

bind off in ribbing Maintain the rib pattern as you bind off (knit the knit stitches; purl the purl stitches) (UK: cast off in ribbing)

cast on Form a foundation row by making specified number of loops on the knitting needle.

decrease Reduce the number of stitches in a row (i.e., knit 2 together; purl 2 together).

increase Add to the number of stitches in a row (i.e., knit in front and back of stitch).

knitwise Insert the needle into the stitch as if you were going to knit it.

make one Insert tip of LH needle from front to back under the strand between the last stitch worked and the next stitch on the needle. Knit into the back loop to increase one stitch.

make one purl stitch With the needle tip, lift the strand between the last stitch worked and the next stitch on left-hand needle and purl it. One purl stitch has been added.

no stitch On some charts, "no stitch" is indicated with shaded spaces where stitches have been decreased or not yet made. In such cases, work the stitches of the chart, skipping over the "no stitch" spaces.

place markers Loop a piece of contrasting yarn or a purchased stitch marker onto the needle.

pick up and knit/purl Knit (or purl) into the loops along an edge.

purlwise Insert the needle into the stitch as if you were going to purl it.

selvage stitch Edge stitch that helps make seaming easier.

skip Skip specified number of stitches of the previous row and work into next stitch (UK: miss).

slip, slip, knit/purl Slip next two sts knitwise (purlwise), one at a time, to right-hand needle. Insert tip of left-hand needle into fronts of these sts from left to right and knit/purl them together to decrease one stitch.

slip stitch In knitting, pass a stitch from the left-hand to the right-hand needle as if to purl without working it. In crochet, insert hook through loop or edge, yarn over and pull through loop on hook (UK: ss or sc).

work even Continue in specified pattern without increasing or decreasing (UK: work straight).

yarn over In knitting, make a new stitch by placing the yarn over the right-hand needle (UK: yfwd, yon, yrn). In crochet, wind yarn around hook. (UK: yoh or yrh).

Notes

1. There are 20 blanket squares, each knitted separately and sewn together.
2. Each square is cast on with 42 sts using the long-tail method. The first row is purled. This row is not shown on chart.
3. Ten motif squares are worked Intarsia style, or a mix of in tarsia with stranded colorwork. These squares are worked in Stockinette stitch following the charts.
4. Ten plain squares are not patterned, and are worked in Stockinette stitch.
5. Before seaming, each square will measure approximately 10½ x 10½in/26.5 x 26.5cm. After seaming each square will be approximately 10 x 10in/25.5 x 25.5cm.
6. Each square is 42 sts wide and approximately 62 rows long. This does not include cast on and bind off rows, or the purl row after the cast on row.
7. Depending on the pattern stitch and yarn irregularities, you may reach the length of 10½in/26.5cm before you reach 62 rows. If you need extra rows, use the last color to complete the square.

Motif Squares

- All motif squares are worked in Stockinette Stitch Intarsia-style, or with stranded colorwork.
- Read odd-numbered, right-side rows from right to left.
- Read even-numbered, wrong-side rows from left to right.
- Due to the variation of colors in Silk Garden yarns, the background colors may be a little different from what is shown the photo. You can chose the desired section of color.

Square 1- Pagoda

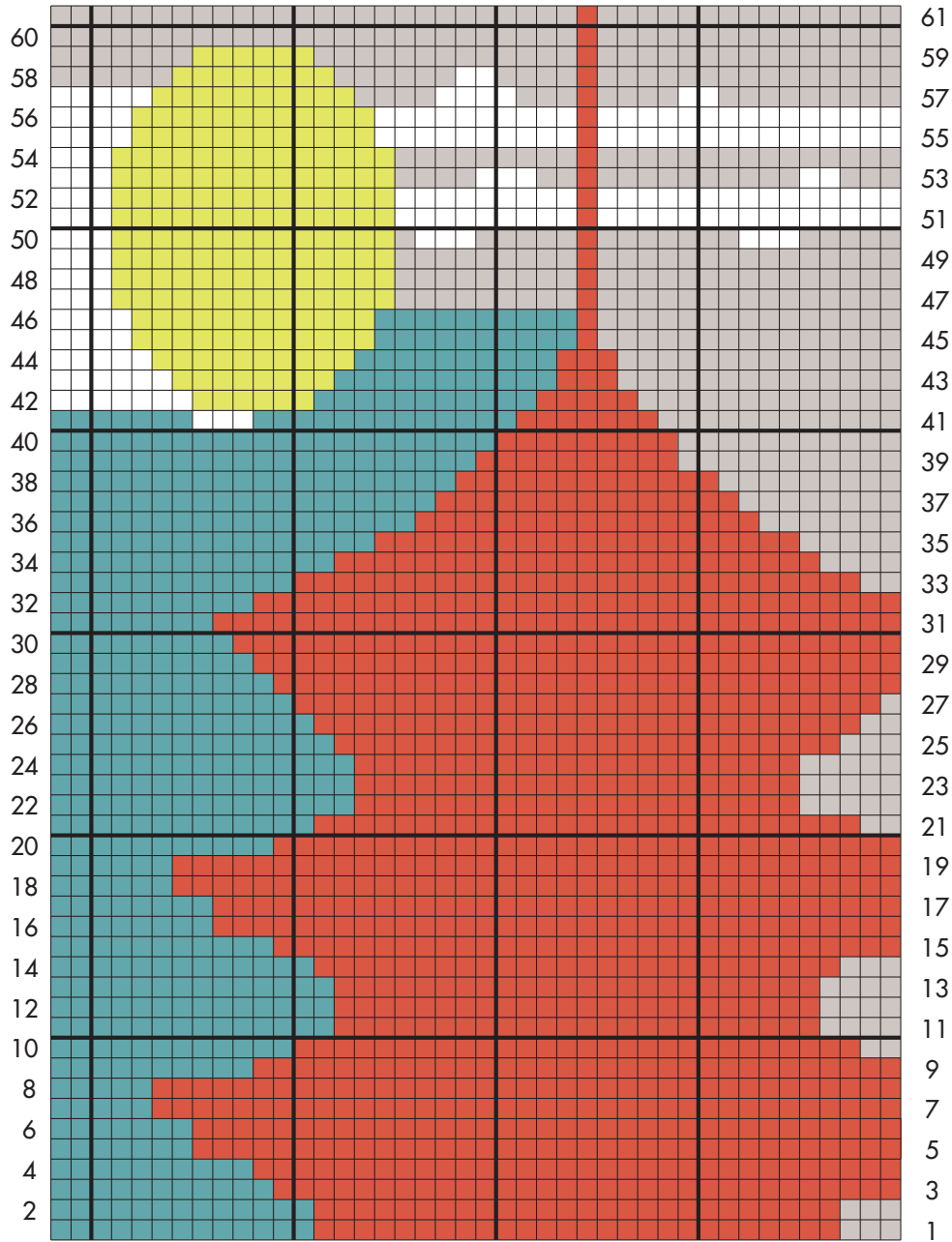
With color #07, cast on 42 sts and purl 1 row on WS.

Work rows 1–61 of Pagoda chart.

With color #208, bind off purlwise on WS.

A Voyage East

Pagoda



42 sts

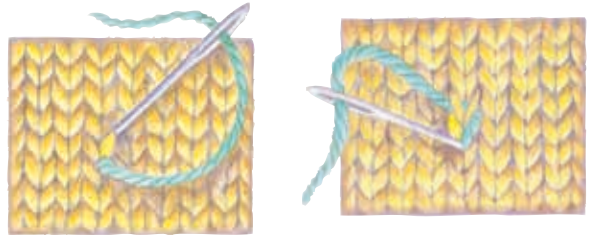
□ Color #01 ■ Color #07 ■ Color #35 ■ Color #208 ■ Color #203

A Voyage East

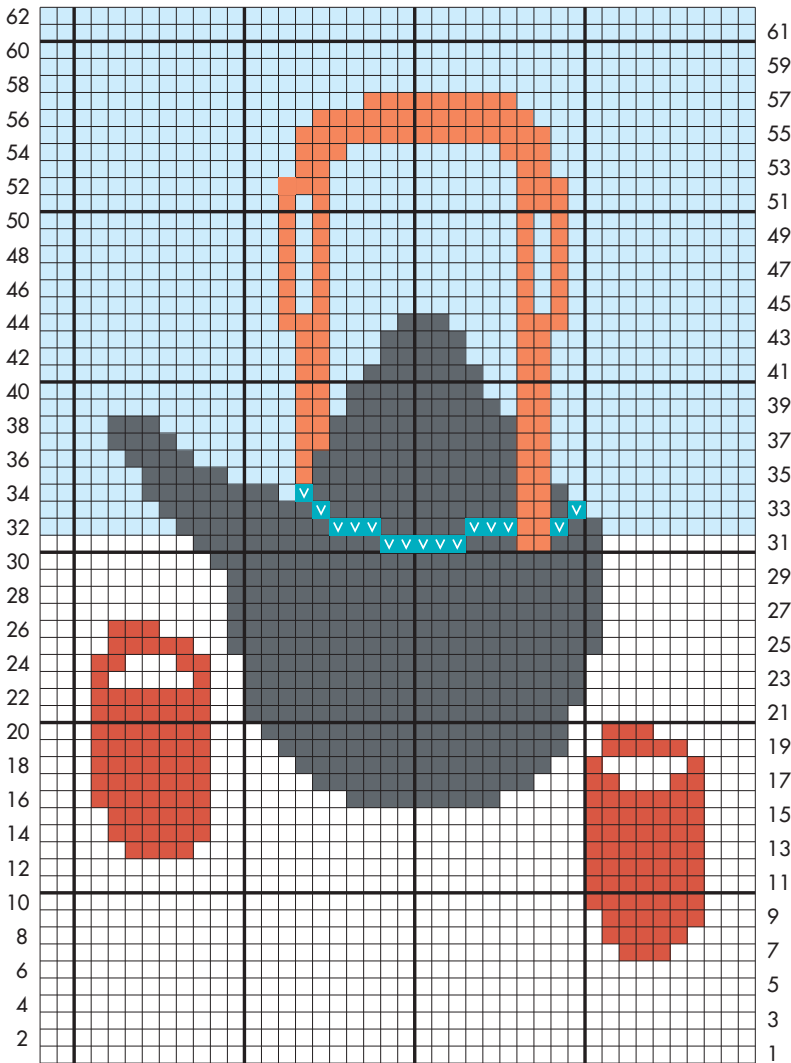
Square 2 - Teapot and cups

With color #01, cast on 42 sts and purl 1 row on WS.
 Work rows 1-62 of Teapot and Cups chart. With color #208,
 bind off purlwise on WS.
 With color #11 embroider lid of teapot using duplicate stitch.

Duplicate Stitch



Teapot and Cups



42 sts

- #01
- #84
- #47 or #208
- #07
- #208
- #11 (duplicate st with turquoise)

A Voyage East

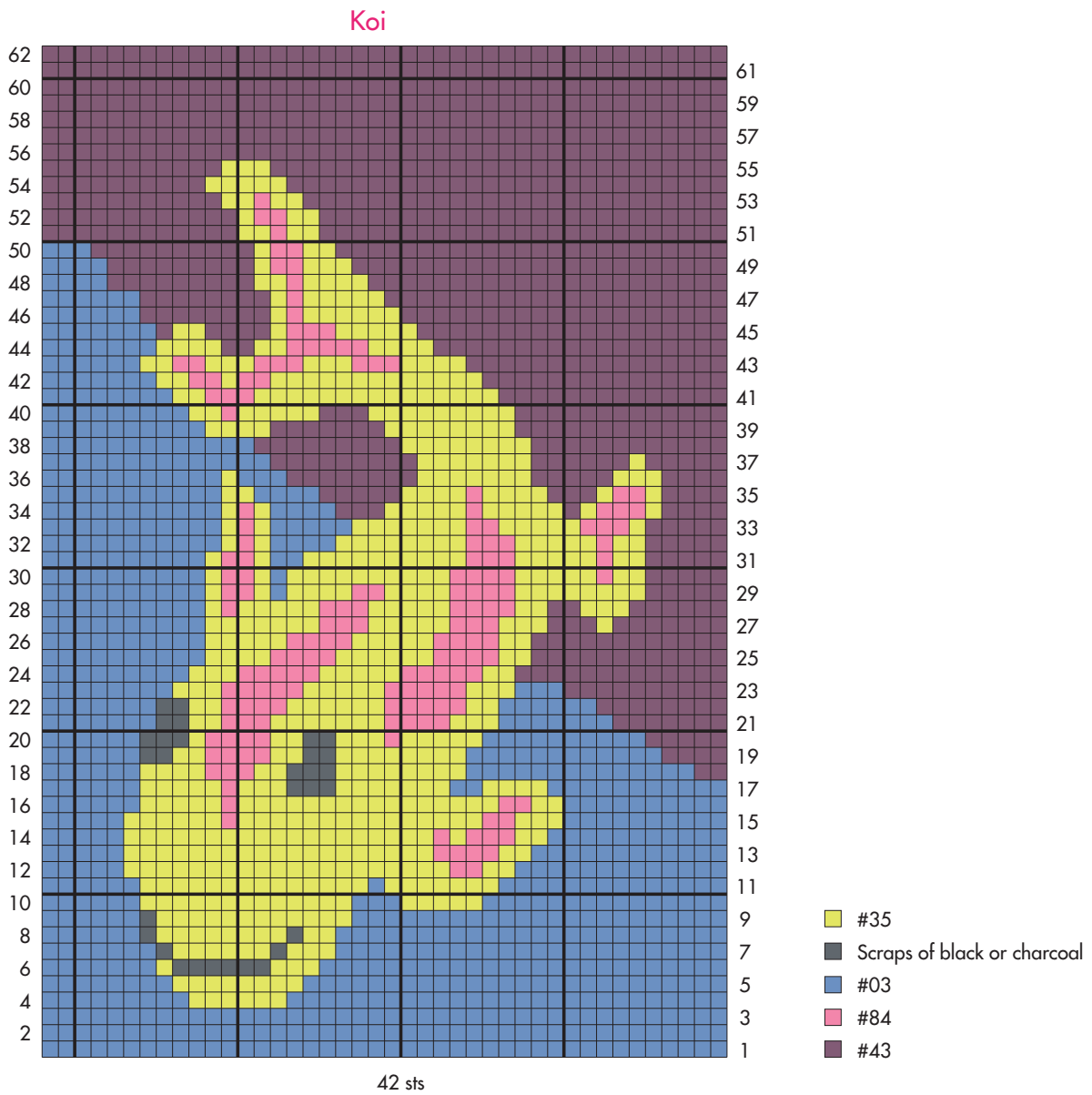
Square 3 - Koi

Additional materials

- Scraps of black or charcoal (for mouth and eyes).

With color #03, cast on 42 sts and purl 1 row on WS.
Work rows 1–62 of Koi chart.

With color #43, bind off knitwise on RS.



A Voyage East

Square 4 - Bonsai Tree

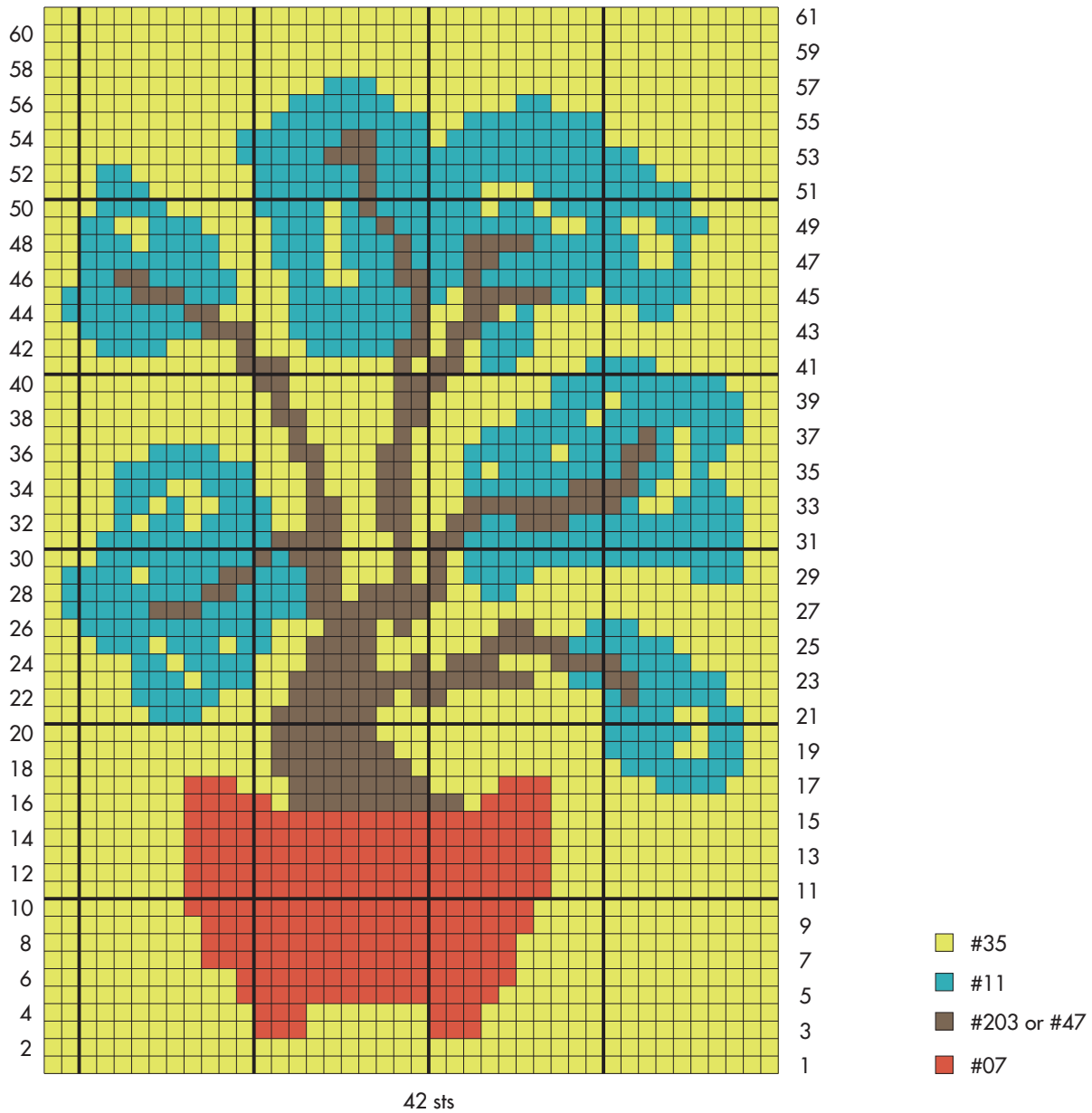
With color #35, cast on 42 sts and purl

1 row on WS.

Work rows 1–61 of Bonsai Tree chart.

With color #35, bind off purlwise on WS.

Bonsai Tree



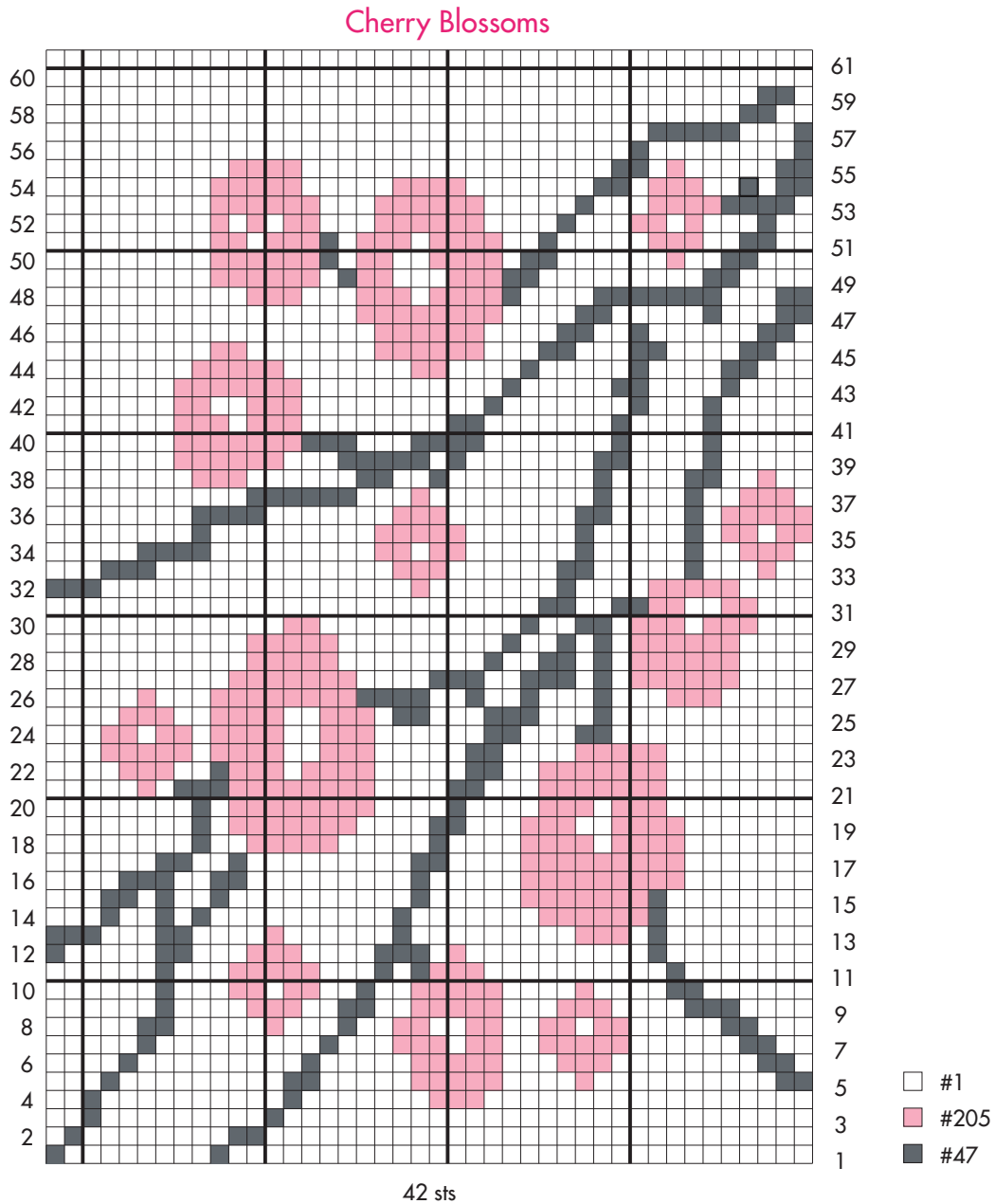
A Voyage East

Square 5 - Cherry Blossoms

With color #1, cast on 42 sts and purl 1 row on WS.

Work rows 1–61 of Cherry Blossoms chart.

With color #1, bind off purlwise on WS.



A Voyage East

Square 6 - Ocean Waves

Note: In this pattern stitch, you may not need 62 rows to reach your measurement of 10½in/26.5cm.

With color #01, cast on 42 sts and purl 1 row on WS.
 Work rows 1–54 of Ocean Waves chart, or until piece measures 10½in/26.5cm from beg.
 With color #208, bind off. ■

Ocean Waves

