



THE COLOR EVOLUTION



CANYON JERSEY

MATERIALS

Poema Nuance by Laines du Nord
Color 314: 2 (2, 3) balls
US6/4mm Circular needle. Stitch markers, tapestry

SIZES

S (M, L)

FINISHED MEASUREMENTS

Width 37½ (40,45)"/95(102,114)cm
Total Length 21(21½,22)"/53(54,55)cm
Length from underarm to hem: 13(13,13)"/34(34,34)cm
Sleeve Length 17(17½,18)"/43(44,45)cm.

TENSION

23sts x 32rows = 4"/10cm square over stocking st. using
US6/4mm needles.

NOTES

This garment is worked in rounds from the bottom up in one piece until the underarm. The upper part is worked back and forth in two separate pieces, front and back. Sleeves are worked in rounds picking up stitches along the armhole and working downwards.

Chart: read the chart from right to left and from the bottom up. Each square represents one stitch horizontally and one row vertically.

For the contrasting color use the yarn on the other end of the ball.

ABBREVIATIONS

st(s) = stitch(es);
K = knit;
P = purl;
RS = right side;
WS = wrong side;
K2tog = knit 2 sts together;
Skpo = slip 1, K1, pass slipped stitch over;
rep = repeat
MC = main color;
CC = contrasting color, use the yarn on the other end of the ball.
Stocking stitch = (RS knit, WS purl)

BODY

With US6/4mm needles cast on 216 (234, 258) sts, place a colored marker in indicate beg of round.

Working in rounds work as follows:

Rounds 1 - 8: * K1, P1, rep * to the end.

Knit 6 rounds.

Follow CHART (for the contrasting color use the yarn on the other end of the ball.)

Work the 25 rows pattern of chart repeating the 6 stitch pattern across the round.

When chart pattern completed cont working in stocking st. (K all rounds) until the sweater measures 13"/34cm from the beginning.

Divide for front and Back.

FRONT [108 (117, 129) sts]

Working in rows cont as follows:

Row 1 (RS): Cast off 4 sts, Knit until 104 (113, 125) sts on right hand needle, turn. [104 (113, 125) sts]

Row 2 (WS): Cast off 4 sts, P to end. [100 (109, 121) sts on the needle]

Row 3 (RS): K2, skpo, K to the last 4sts, K2tog, K2. [98 (107, 119) sts rem]

Row 4: P to the end

Work 48 (50, 54) rows more in stocking st.

Shape Front Neck

Row 1: (RS) K34 (38, 42)sts turn put rem sts on a spare needle.

Row 2: Purl to end.

Row 3: Knit to the last 4sts, K2tog, K2.

Row 4: Purl to end.

Rep the last 2 rows 3 times more. 30 (34, 38) sts rem.

Work 2 rows in stocking st.

Put sts on a st holder.

Return to the sts on the spare needle.

Slip the centre 30 (31, 35) sts onto a st holder for neckband.

With RS facing rejoin yarn to rem 34 (38, 42) sts and wk as follows:

Row 1: (RS) Knit to end.

Row 2: Purl to end.

Row 3: K2, skpo, knit to end.

Row 4: Purl to end.

Rep the last 2 rows 3 times more. 30 (34, 38) sts rem.

Work 2 rows more in stocking st.

Put sts on a st holder.

BACK [108 (117, 129) sts]

With RS facing rejoin yarn to the 108 (117, 129) sts and wk as follows:

Row 1 (RS): Cast off 4 sts, K to the end. [104 (113, 125) sts]

Row 2 (WS): Cast off 4 sts, P to the end. [100 (109, 121) sts]

Row 3: K2, skpo, K to the last 4 sts, K2tog, K2. [98 (107, 119) sts rem]

Row 4: P to the end.

Work 60(62,66) rows more in stocking st.

Put sts on a st holder.

MAKEUP

Join shoulder seams for 30 (34, 38) sts. Leaving the center back 30 (31, 35) sts on hold for the neckband.

SLEEVES

Working in rounds.

With US6/4mm needles pick up and K70 (74, 82) sts evenly around armhole.

Place a colored marker at the underarm to indicate the beg of the round.

Knit 120 rounds (15"/37cm)

Decrease round: Knit to end decreasing 28 (30, 36) sts evenly along the round. [42 (44, 46) sts rem]

Cuff

Work 20 rounds of K1, P1 rib.

Cast off all stitches.

NECKBAND

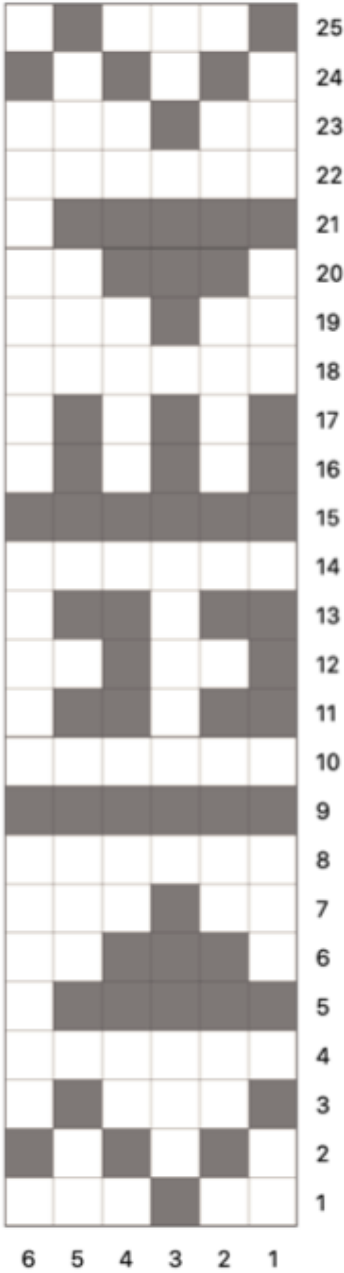
With RS facing and US6/4mm needles pick up and knit 86 (90, 98) sts around the neckline.

Place a colored marker and working in rounds work as follows:

Work 10 rounds K1, P1 rib.

Cast off Loosely.

CHART A



KEY

 MC

 CC