



THE COLOR EVOLUTION



SWEATER

MATERIALS

Matera by Laines du Nord

Main Color 05 (cream): 5 (5, 6, 7) x 50grm balls (MC)

Color 4 (Blue): 2(2, 2, 2) balls (C1)

Color 13 (pink) : 1(1, 1, 1) x 50grm balls. (C2)

Color 03 (light blue): 1(1, 1, 1) x 50grm balls (C3)

US5/3.5mm and US7/4.5mm Circular needles. 100cm long for body and 60cm long for sleeves.

SIZES

S (M, L). Size in photo: M

FINISHED MEASUREMENTS

Width 36 (40, 44, 48)"/91 (101, 111, 122) cm

Length 23 (23, 23½, 24)"/58 (58, 59, 61) cm

Sleeve Length 15½ (15½, 16, 16½)"/39 (39, 41, 42) cm

GAUGE

22sts x 32 rows = 4"/10cm square in 7/4.5mm needles.

NOTES

Charts are worked in Stocking st. (knit all rounds)

Read the CHARTS from the bottom-up and from right to left.

This sweater is worked in the round from the top down, with circular yoke.

ABBREVIATIONS

st(s) = stitch(es)

K = knit

P = purl

tog = together

inc = increasing

dec = decreasing

cont = continue

rep = repeat

GLOSSARY

M1K = make one stitch thus: by picking up horizontal loop lying between last stitch worked and next stitch and knit into back of loop.

INSTRUCTIONS

YOKE

With US4/3.5mm needles and C1 cast on 112 (112, 120, 128) sts plus 1 extra. Place a colored marker to indicate beginning of row.

Ensuring that the work is not twisted join the round by K2tog the first and the last cast on stitch. 112 (112, 120, 128) sts]

Working in rounds work as follows:

Rounds 1 - 10: * K2, P2 * rep from * to * to end.

Change to US7/4.5mm needles and cont as follows:

Round 11: Knit to end.

Round 12: Knit to end inc 40sts evenly across row. [152 (152, 160, 168) sts]

Round 13: Knit to end.

Round 14: * Work row 1 chart A for 8sts * rep * to * to end.

Cont until the 11 rows of chart A have been worked.

Round 25: Using C1, knit to end.

Round 26: Using C1, * K4, M1K * rep from * to * to the end [190 (190, 200, 210) sts]

Round 27: Using C1, knit to end.

Round 28: * work row 1 CHART B for 5sts* rep from * to * to end.

Cont until the 5 rows of Chart B have been worked.

Round 33: Using C1, knit to end.

Round 34: Knit to end inc 42 (50, 48, 46) sts evenly. [232 (240, 248, 256) sts]

Round 35: Using C1, knit to end.

Round 36: * wk row 1 CHART C for 8 sts * rep from * to * to end.

Cont until the 11 rows of Chart C have been worked.

Round 47: Using C1, knit to end.

Round 48: Knit to end inc 58 (60, 62, 64) sts evenly across row. [290 (300, 310, 320) sts]

Round 49: Using C1, knit to end.

Round 50: * wk row 1 CHART B for 5sts * rep* to * to end.

Cont until the 5 rows of Chart B have been completed.

Round 55: Using C1, knit to end.

Round 56: Knit to end inc 14 (20, 26, 32) sts evenly across row. [304 (320, 336, 352) sts]

Round 57: Using C1, knit to end.

Round 58: * wk row 1 CHART D for 8sts * rep * to * to end.

Cont until the 11 rows of Chart D have been worked.

Round 69: Knit to end inc 1 (10, 14, 23) sts evenly across row. [305 (330, 350, 375) sts]

Round 70: * wk row 1 CHART E for 5sts, * rep * to * to end.

Cont until the 5 rows of Chart E have been worked.

Only for sizes L and XL:

K(5, 7) rounds with MC

Divide for Back, Front and Sleeves

Slip the first 56 (60, 62, 64) sts onto a st holder (first sleeve), rejoin yarn and cast on 4 (5, 8, 10) underarm sts, K97 (105, 113, 124) sts (front), slip the next 56 (60, 62, 64) sts onto a 2nd stitch holder (second sleeve), cast on 4 (5, 8, 10) underarm sts, K96 (105, 113, 123) sts (back).

Body sts: 201 (220, 242, 267)

Body

Work with MC in stocking st until sweater measures about 11 (11, 11½, 12)"/28 (28, 29, 30) cm from underarm.

Dec round: Knit to end dec 13 (20, 22, 23) sts evenly across row. [188 (200, 220, 244) sts]

Work hem as follows:

Change to US4/3.5mm needles and work as follows:

Round 1: *K2, P2* rep from * to * to end.

Work a further 13 rounds in K2, P2 rib.

Cast off.

SLEEVES

Slip the 56 (60, 62, 64) sts from st holder onto US7/4.5mm needles and using MC cast on and K4 (6, 8, 10) underarm sts. 60 (66, 70, 74) sts.

Place a colored marker in the center of the underarm and cont working in rounds.

Work in stocking st (knit all rows) until sleeve measures 14 (14, 14½, 15)"/36 (36, 37, 38) cm from underarm.

Dec round: Knit to end dec 20 (22, 22, 22) sts evenly across row. [40 (44, 48, 52) sts]

Work cuff as follows:

Change to US4/3.5mm needles and work 12 rounds in K2, P2 rib as given for body.

Cast off.

CHART A

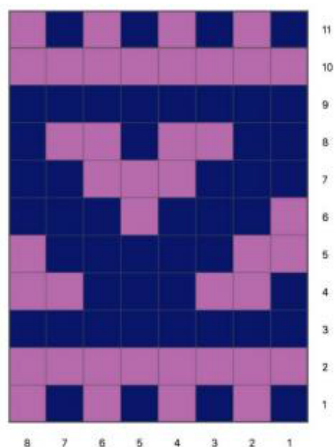


CHART B

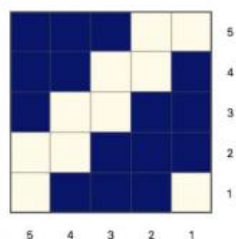


CHART C

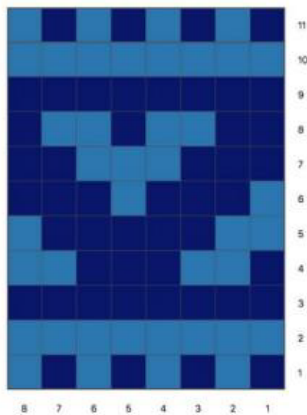


CHART D

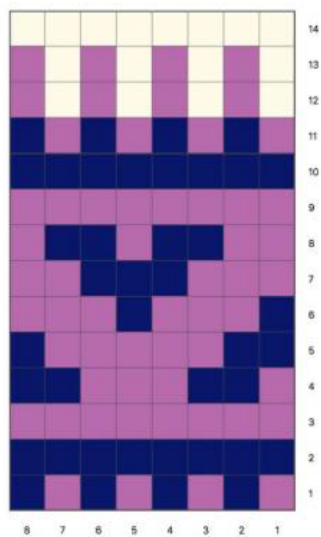
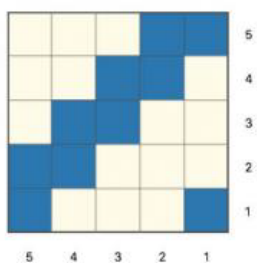






CHART E



KEY

-  MC
-  C1
-  C2
-  C3