



# THE COLOR EVOLUTION



## SHAWL TRINITY

### MATERIALS

Matera by Laines du Nord  
4 x 50grm balls of color 15 (Teal) (A)  
3 x 50grm balls of color 10 (Moss) (B)  
3 x 50grm balls of color 13 (Rose) (C)  
US7/4.5mm circular needle.

**LEVEL:** Expert

### NOTE

This shawl is made up of 3 different sections. These sections are knitted by picking up the stitches on one side of the previous section.

Section A: is the first section knitted.

Section B: is the second section knitted. You start by picking up the stitches along the short side of section A.

Section C: shawl border. These stitches are picked up along the outer side of the whole shawl.

### ABBREVIATIONS

sts = stitches  
P = purl  
K = knit  
tog = together  
yo = yarn over.  
inc = increase.  
Dec = decrease  
RS = right side  
WS = wrong side  
Cont = continue  
wk = work  
cn = cable needle  
sl = slip  
C2F = sl next 2 sts to cn at front of work, k2, p2, the k2 from cn.  
C2B = sl next 2 sts to cn at front of work, p4, the k2 from cn.

### INSTRUCTIONS

#### SECTION A (color A)

With US7/4.5mm needles and color A cast on 76 sts and work as follows:

**SPECIAL NOTES:** the first and last 3sts are edge stitches, that are not included in the chart, and are ALWAYS knitted as follows:

first 3 stitches: slip 1 purlwise, K2

last 3 stitches: K3

**Row 1 (RS):** Slip 1 purlwise, K2, wk row 1 Chart 1 for 70 sts, (rep the sts in the section in bold 10 times in total), K3. =76 sts. Cont working from chart 1 until the 40 rows are completed. Rep rows 1 to 40 six times more.

Rep row 1 to row 23 once more. (303 rows)

Wk dec as follows:

**Next row (WS):** K3sts, P2tog, patt to end.

Cont to dec 1 st as set on every wrong side row until 7 sts rem. Now dec in the middle until 3sts rem.

Cast off.

#### SECTION B (color B)

With RS facing and with US7/4.5mm needles and color B pick up and P76sts on short edge as in the figure 1.

**SPECIAL NOTES:** the first and last 3sts are edge stitches, are not included in chart, and are ALWAYS knitted as follows:

first st: slip 1 purlwise, K2.

last 3sts: K3

**Next row:** Wk row 1 Chart 1 section B for 72 sts repeating the sts marked in bold section 4 times.

Cont working up to row 27 then repeat 5 times more.

Cont in patt AT THE SAME TIME dec 1 st at the beg of the next row and on every right side row until 1 st remains

Fasten off.

#### SECTION C (color C)

With RS facing and with US7/4.5mm needles and color C pick up and Knit along edges of shawl:

Along the edge of long side of section B, plus cast on row of section A, pick up and K215sts evenly. Then pick up a stitch on the corner (this is central stitch, at this point we will work the increases), cont to pick up and K178sts along the long side of section A.

Purl one row.

Cont to work SECTION C in this order:

CHART 1 - section C

CHART 2 - section C

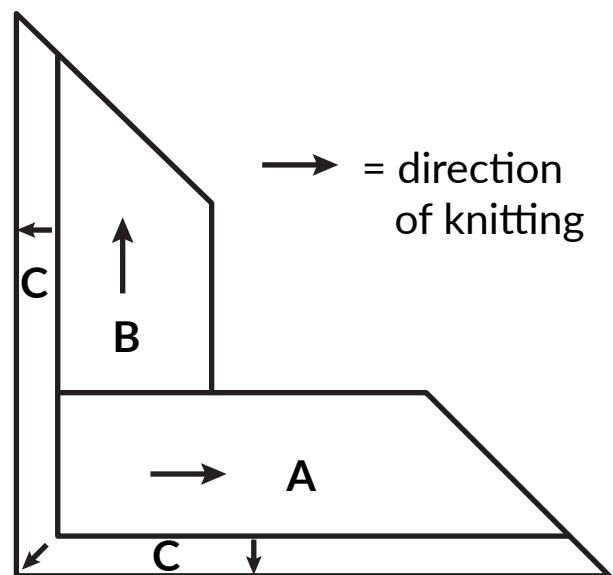
CHART 3 - section C

**Thus Row 1:** Work row 1 chart 1 (K1, inc 1, patt to the center corner stitch, work row 1 chart 2, (Knit corner stitch, work row 1 chart 3 (patt to the last st, inc 1, K1).

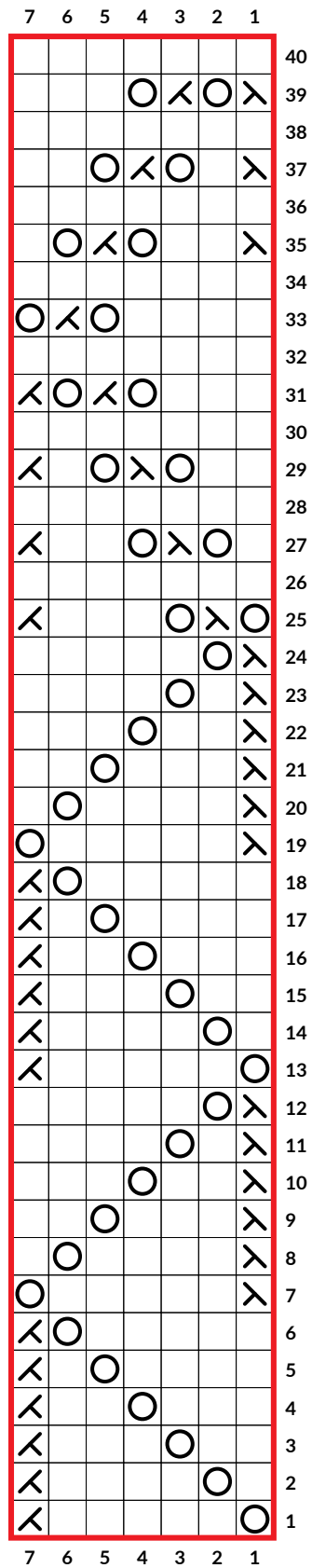
Row 2: work row 2 chart 3, row 2 chart 2 (inc 1 at each side of center corner stitch), work row 2 chart 1.

Cont until the 24 rows are worked then rep rows 1 to 13 once more.

Cast off.



# SECTION A - CHART 1



□ K on RS; P on WS

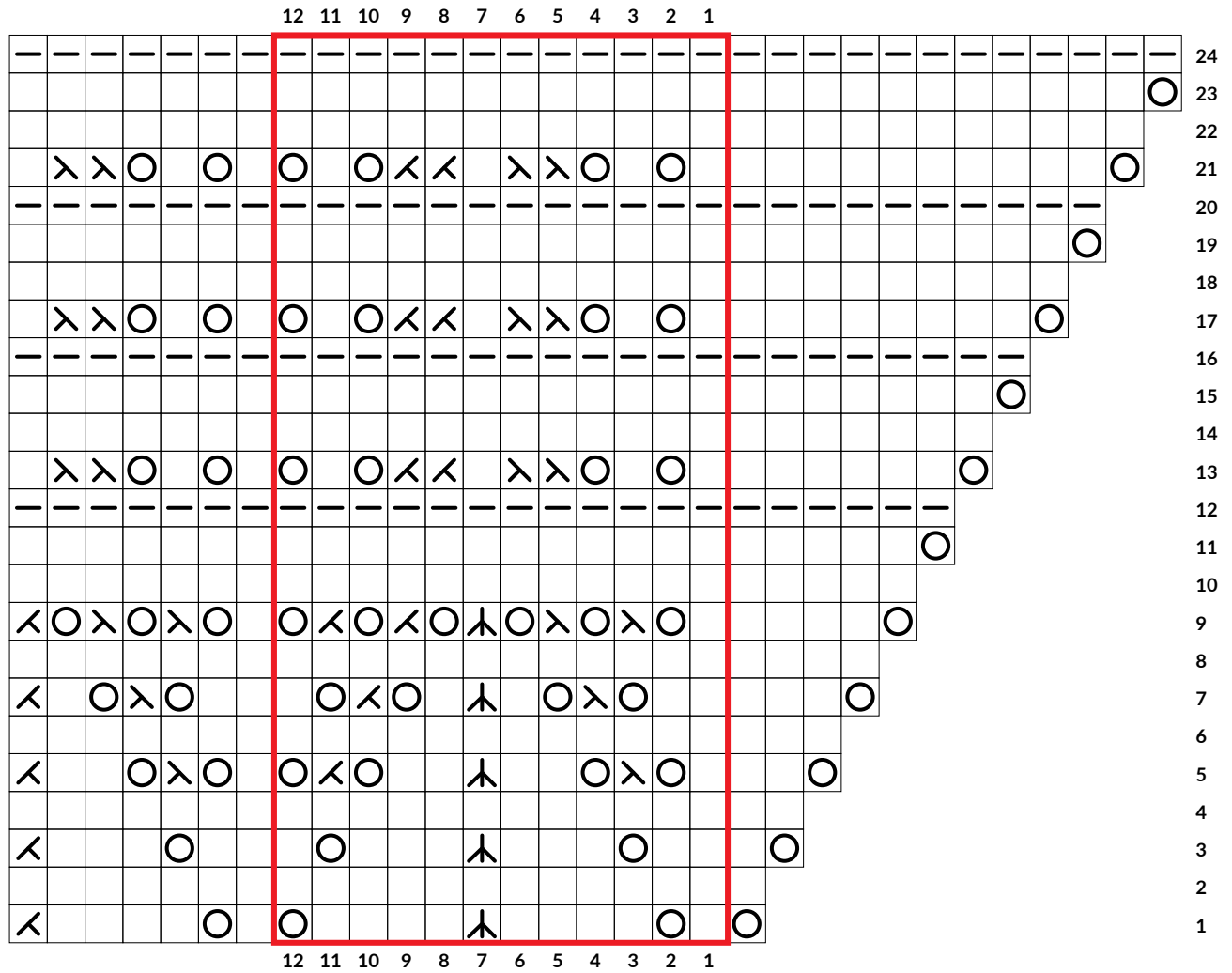
↙ ssk

↘ k2tog

○ yo

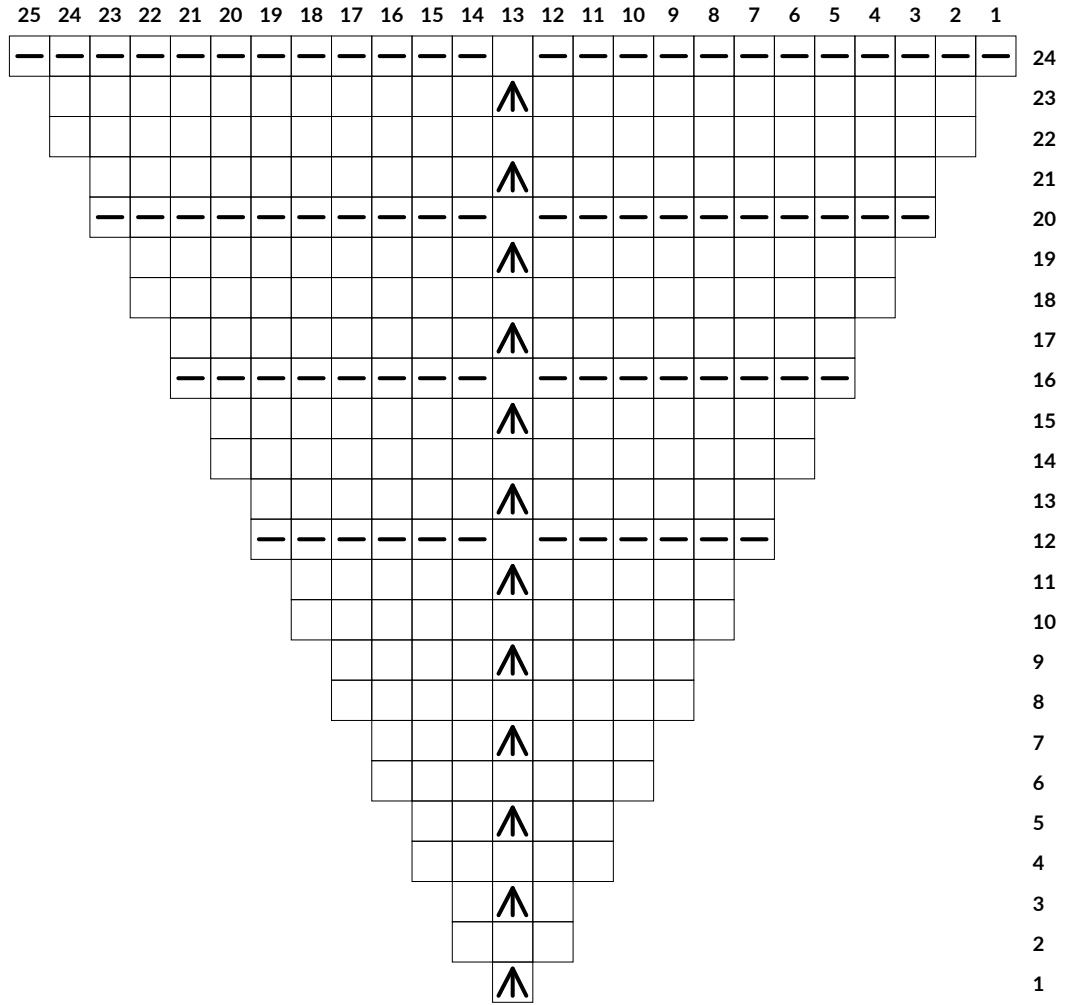


# SECTION C - CHART 1



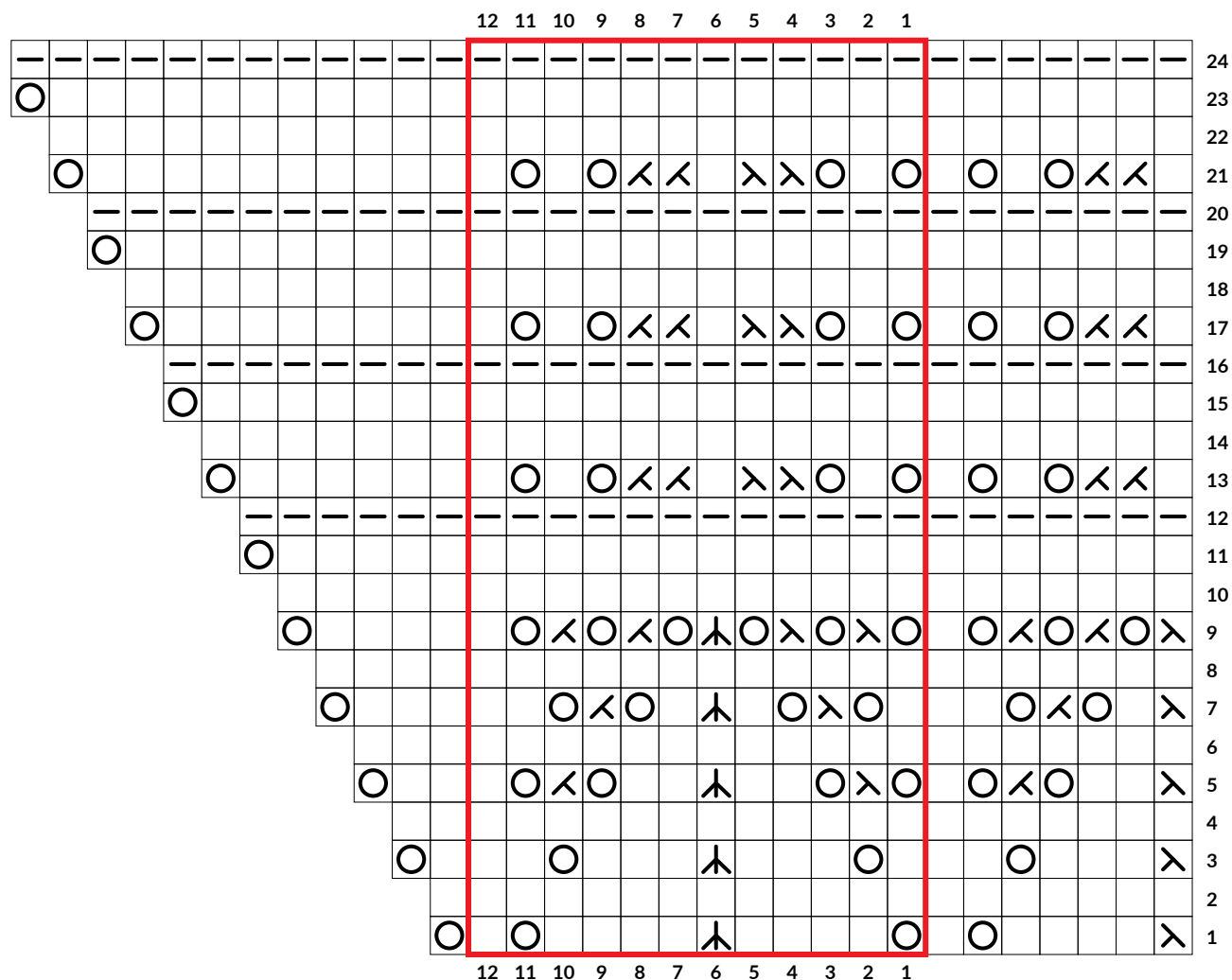
K on RS; P on WS  
 — P on RS; K on WS  
 ◀ ssk  
 ▶ k2tog  
 ○ yo  
 ▲ sl 1 k1 pss0

## SECTION C - CHART 2



K on RS; P on WS   
  P on RS; K on WS   
 ▲ center st

### SECTION C - CHART 3



  K on RS; P on WS  
 — P on RS; K on WS  
 ↙ ssk  
 ↘ k2tog  
 ○ yo  
 ⤴ sl 1 k1 pss0