

 *Ella Rae*
YARNS & DESIGNS



BERRY ★★★

YARN
Ella Rae Palermo

Col. No.	Quantity x 50g balls
Col A 05	6
Col B 01	2
Col C 02	2
Col D 06	2
Col E 03	2

NEEDLES
1 pair 8.00mm needles (USA 11)(UK 0)

FINISHED MEASUREMENT
(after felting)
Width 45cm
Depth 30cm

Note These measurements are only approximate as it will depend on how the bag is felted.

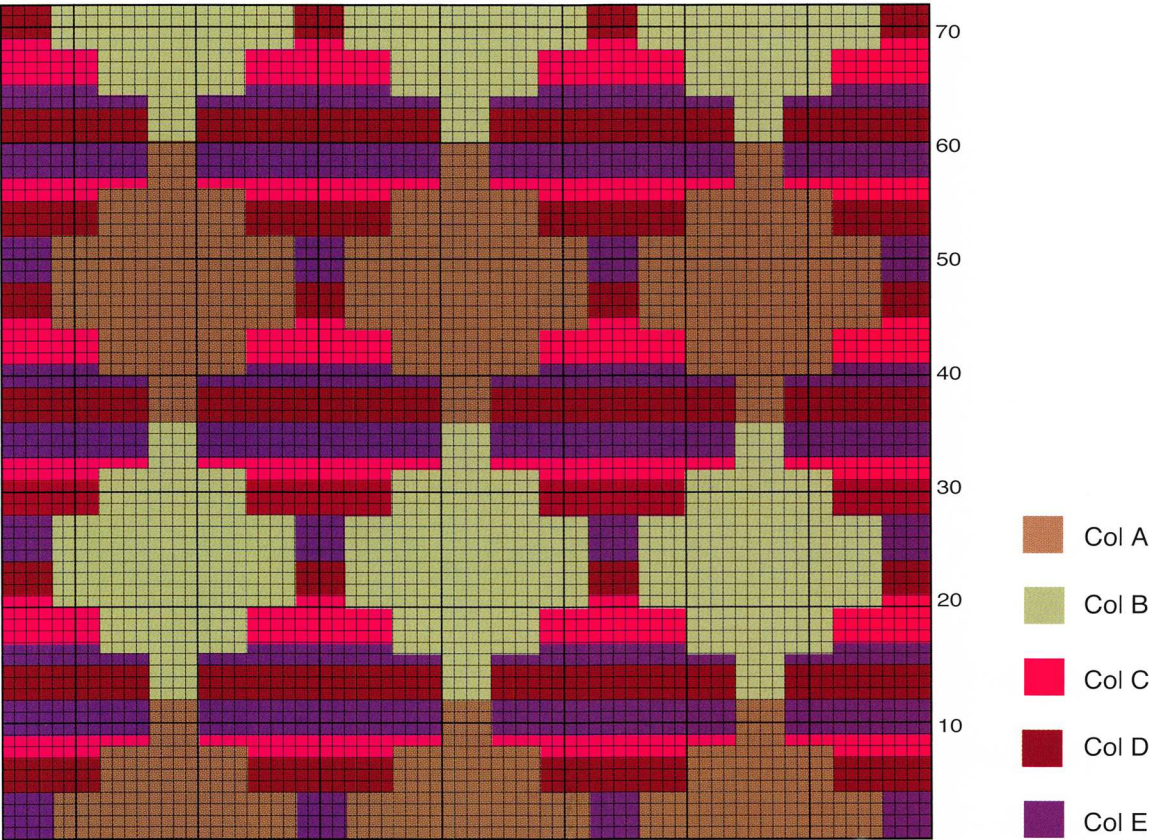
ADDITIONAL REQUIREMENTS
Handles.

TENSION
12 sts and 16 rows measured over 10cm of St st using 8.00mm needles.
Note 2 strands of yarn worked together are used throughout unless otherwise stated.

BAG
Base Using 8.00mm needles, Col A and 2 strands of yarn, cast on 20 sts. Work 76 rows in St st. Cast off.
Sides With RS facing, using 8.00mm needles, Col A and 2 strands of yarn, pickup and knit 76 sts along one side of base. Refer to graph for pattern placement and colour changes, beginning on a WS row, work 72 graph rows. Using Col A, knit 3 rows. Cast off. Repeat for other side.

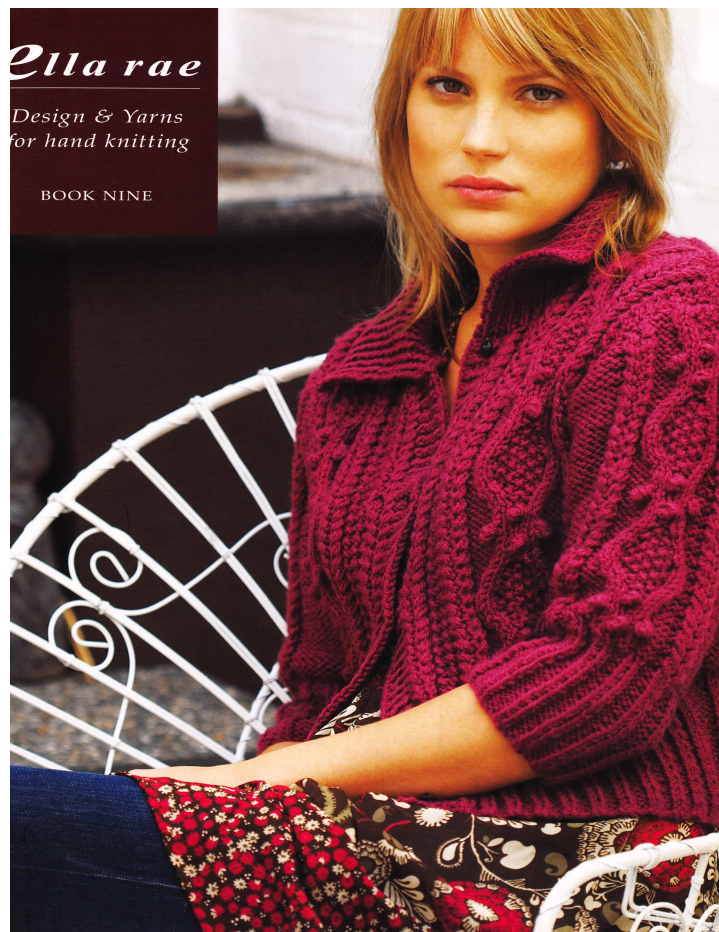
Ends With RS facing, using 8.00mm needles, Col A and 2 strands of yarn, pickup and knit 18 sts along one end of base. Work in St st until length measures same as sides, finishing with knit 3 rows. Cast off. Repeat at other end.

MAKING UP
Darn in all loose ends.
Sew seams, using edge to edge st. Felt using method on page 71. Attach handles.



Berry

is from



[Ella Rae Book #9 - Fall 2007](#)

by Ella Rae



Design Credit: Leanne Prouse

Photography Credit: Robert Frith, Acorn Photo Agency

All Knitting Fever publications are intended for personal use only. Knitting Fever, Inc. (KFI) does not guarantee the final result. Measurements, gauge, etc. are included as a guideline. If you have any questions about this project, please contact us at knittingfever.com.

Copyright © 2014 Knitting Fever, Inc. Copy or duplication for resale is strictly prohibited.