

LANA GATTO



SILK MOHAIR LUX

FLARED SWEATER

LANA GATTO

Size: 12 (16)

NOTE: figures in brackets () refer to larger size. Where only one figure is given this refers to both sizes.

Skill Level: intermediate

How much yarn:

g 125 (150) of Silk Mohair Lux yarn, in lilac shade n. 12940

Needles: Pair of 3.75 mm (no. 9) knitting needles

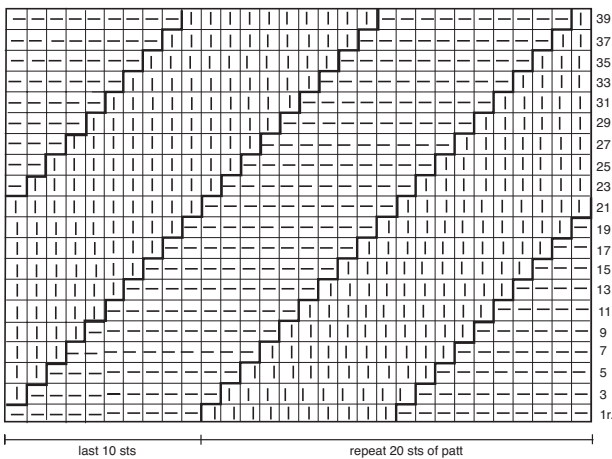
Sewing needle: Yarn needle with rounded point

STITCHES

Stocking stitch (st st)

DIAGONAL STRIPE PATTERN: work on multiple of 20 sts plus 10, following diagram and key. Rep rows 1-40 throughout

Diagonal stripe pattern



| = 1 st in st st - = 1 st in rev st st
Each square corresponds to 1 st and 1 row. There are only odd rows

TENSION

27 sts and 35 rows measure 10 cm square over diagonal stripe patt with 3.75 mm (no. 9) needles.

INSTRUCTIONS

Back: with 3.75 mm (no. 9) needles cast on 130 (140) sts and work in diagonal stripe Motif (for larger size rep the 20 sts of diagonal stripe motif 7 times) dec 1 st at each end every 16th row 9 (10) times. When work measures 43 (46) cm from beg, cont to work rem

112 (120) sts in st st and, at the same time, shape armholes: cast off 2 sts at beg of next 2 sts, then dec 1 st at each end every alternate row 3 (4) times and every following 4th row 3 times: 96 (102) sts rem. When armholes measure 16,5 (17,5) cm, shape neck. Cast off centre 54 (60) sts and work separately each side, dec 1 st at neck edge on next row. Then cont to dec 1 st at neck edge every alt row 4 times more. At the same time, shape each shoulder, casting off 4 sts on armhole edge every alt row 4 times.

Front: work as Back.

Sleeves: with 3.75 mm (no. 9) needles cast on 108 (114) sts. Work in st st, dec 1 st at each end every 6th row 17 times, then every 4th row twice: 70 (76) sts remain. When sleeve measures 30 (31) cm from beg, inc 1 st every 14th row 3 (5) times. There are 76 (86) sts. When sleeve measures 48 (51) cm from beg, shape top. Cast off 2 sts at beg of next 2 sts, then dec 2 sts at each end every alternate row 3 (4) times, 1 st at each end every alt row 14 (15) times and 2 sts at each end every alternate row 3 (4) times. When sleeve measures 12 (13) cm from top cast-off sts, cast off rem 20 sts.

FINISHING

With yarn needle, sew shoulder seams. Set in sleeves. Sew shoulder and side seams.

