

**LANA GATTO**



**SILK MOHAIR**



# SOFT ELEGANCE

**LANA GATTO**

**Size:** 10/12 (14/16) UK - **Size:** 6/8 (10/12) USA

**Size:** 36/38 (40/42) EU

**NOTE:** Figures in brackets ( ) refer to larger size

Where only one figure is given this refers to both sizes

**Skill Level:** advanced

**How much yarn:** g 250 (300) of Silk Mohair yarn, in fuchsia shade no. 7260

**Needles:** Pair of 4.00 mm (no. 8) knitting needles  
A 4.00mm (no. 8) spare needle

**Sewing needle:** Yarn needle with rounded point

**Other items:** stitch-holders

## STITCHES

**Using needles:** tubular stitch - Stocking stitch (st st).

**LILY-OF-THE-VALLEY PATT:** work on 29 sts, following cart and key. Across even rows, omitted in the chart, purl all sts and yfd of previous row. Rep rows 15- 48 throughout.

## TENSIONS

18 sts and 26 rows measure 10 cm square over st st with 4.00 mm (no. 8) needles and two strands of yarn held tog. Central panel, on 58 sts worked in lily-of-the-valley patt, is 32cm wide.

## INSTRUCTIONS

**NOTE:** work using two strands of yarn held together throughout. Central panel measurements are calculated across beginning patt sts. The width can lightly change during work. Template measurements correspond to beg sts. The number of sts for neck and shoulder shaping is counted in accordance with beg sts.

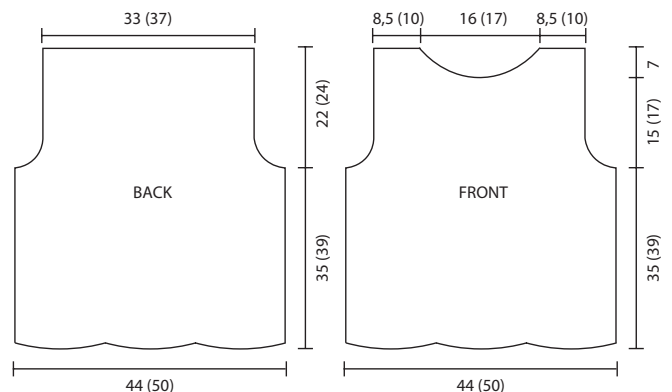
**Back:** with 4.00 mm (no. 8) needles cast on 80 (90) sts. For border work 6 rows in tubular st (= 1 cm). Then work as follows: 11 (16) sts in st st, 58 sts in lily-of-the-valley patt (rep Chart Motif twice), 11 (16) sts in st st. When

work measures 35 (39) cm from beg, shape armholes: cast off 6 (8) sts at beg of next 2 rows, then create armhole borders on next row as follows: (K1 and K1 t.b.l.) into each of first 3 sts, cont to last 3 sts, (K1 and K1 t.b.l.) into each of last 3 sts. Work these 6 sts on each side in tubular st for armhole borders. At the same time, inside borders, dec 1 st on each end every alternate row 4 times. When work measures 57 (63) cm from beg, leave rem sts on a spare needle.

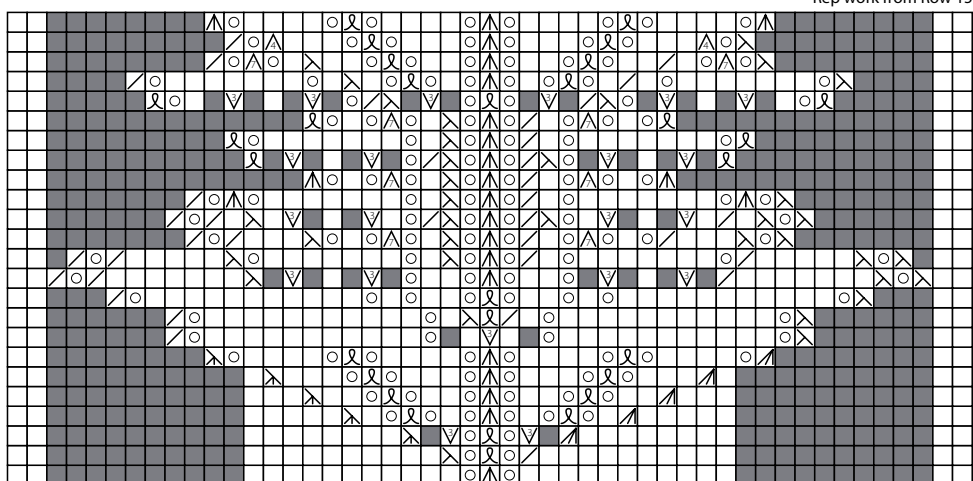
**Front:** work as Back until Front measures 50 (56) cm from beg. Shape neck: cast off centre 16 (18) sts, join another ball of yarn and cont separately on either side. Work as before, dec 1 st at neck edge, inside 1 st, every alternate row 6 times. When Front measures 57 (63) cm from beg, leave on a stitch-holder the sts for each shoulder and armhole border.

## FINISHING

With yarn needle graft left shoulder in darning stitch. **Turtleneck:** pick up and K 86 (90) sts around neckedge. Starting with a P row, work 21 rows in st st (= 8 cm). Cast off on RS. Graft also right shoulder. Sew turtleneck seam. Sew side and armhole-border seams.



## LILY-OF-THE-VALLEY PATT



Each square corresponds to 1 stitch and 1 row

## Key

- = no stitch
- = knit 1    ○ = yfd (yarn forward)
- ⊗ = K1 t.b.l. (through back loop)
- ⊘ = K2tog
- ⊙ = SK1P (= slip 1 st, knit 1 st, pass slipped st over K1)
- ⊚ = K3tog
- ⊛ = SK2P (= slip 1 st, knit 2 sts together, pass slipped st over K2 tog)
- ⊜ = K4tog
- ⊝ = (K1, yfd, K1) into same stitch
- ⊞ = 1 double dec (= slip next two sts together as if to knit, knit next st, pass both slipped sts over)
- ⊟ = K3tog, then K4tog, pass first stitch obtained over 2nd stitch