

A photograph of a woman from the waist down, wearing a dark purple, long-sleeved dress with a lace bodice. She is holding a large, colorful tassel made of red, blue, and gold threads, adorned with gold beads. She wears several bracelets on her right wrist, including a wide one with colorful beads and a gold chain bracelet. The background is a blurred indoor setting.

Louisa Harding



Size

Approx 18 cm (7 in) wide x 19 cm (7½ in) long

Yarn

Knitted in Sari ribbon, Kimono Angora Pure and Glisten

A. Sari Ribbon sh. 27 Burst 1 x 50g hank

B. K. Angora* sh. 16 Squeeze 1 x 25g ball

C. K. Angora* sh. 17 Sizzle 1 x 25g ball

D. Glisten sh. 29 Copper 1 x 50g ball

E. K. Angora* sh. 18 Azure 1 x 25g ball

* Use yarns double throughout

Needles

Pair of 4.5 mm (US 7) knitting needles

Extras

2 x 30.5 cm (12 in) lengths of twisted cord

Selection of beads for tassels

Tension/gauge

18 sts x 28 rows to 10 cm (4 in) square measured over stripe and eyelet pattern using 4.5 mm (US 7) knitting needles.

Note: When joining in new shade leave a tail of approx 7.5 cm (3in) for fringe around hem of Purse.

Purse

Using 4.5 mm (US 7) needles and yarn A cast on 25 sts. Now work 50 row stripe and eyelet patt rep as folls:

Row 1- Yarn A: Knit.

Row 2- Yarn A: K5, P to last 5 sts, K5.

Row 3- Yarn B: Knit.

Row 4- Yarn B: K5, P to last 5 sts, K5.

Row 5- Yarn C: Knit.

Row 6- Yarn C: Knit.

Row 7- Yarn D: Knit.

Row 8- Yarn D: K5, P1, (yo, P2tog) 7 times, K5.

Row 9- Yarn D: Knit.

Row 10- Yarn D: Knit.

Row 11- Yarn E: Knit.

Row 12- Yarn E: K5, P to last 5 sts, K5.

Row 13- Yarn A: Knit.

Row 14- Yarn A: K5, P to last 5 sts, K5.

Row 15- Yarn B: Knit.

Row 16- Yarn B: Knit.

Row 17- Yarn C: Knit.

Row 18- Yarn C: K5, P1, (yo, P2tog) 7 times, K5.

Row 19- Yarn C: Knit.

Row 20- Yarn C: Knit.

Row 21- Yarn D: Knit.

Row 22- Yarn D: K5, P to last 5 sts, K5.

Row 23- Yarn E: Knit.

Row 24- Yarn E: K5, P to last 5 sts, K5.

Row 25- Yarn A: Knit.

Row 26- Yarn A: Knit.

Row 27- Yarn B: Knit.

Row 28- Yarn B: K5, P1, (yo, P2tog) 7 times, K5.

Row 29- Yarn B: Knit.

Row 30- Yarn B: Knit.

Row 31- Yarn C: Knit.

Row 32- Yarn C: K5, P to last 5 sts, K5.

Row 33- Yarn D: Knit.

Row 34- Yarn D: K5, P to last 5 sts, K5.

Row 35- Yarn E: Knit.

Row 36- Yarn E: Knit.

Row 37- Yarn A: Knit.

Row 38- Yarn A: K5, P1, (yo, P2tog) 7 times, K5.

Row 39- Yarn A: Knit.

Row 40- Yarn A: Knit.

Row 41- Yarn B: Knit.

Row 42- Yarn B: K5, P to last 5 sts, K5.

Row 43- Yarn C: Knit.

Row 44- Yarn C: K5, P to last 5 sts, K5.

Row 45- Yarn D: Knit.

Row 46- Yarn D: Knit.

Row 47- Yarn E: Knit.

Row 48- Yarn E: K5, P1, (yo, P2tog) 7 times, K5.

Row 49- Yarn E: Knit.

Row 50- Yarn E: Knit.

Rep these 50 rows once more.

Cast off.

Making up

Top edge

Using 4.5 mm (US 7) needles and yarn A, pick up 57 stitches along top edge of knitting. (opposite end from fringe)

Row 1(WS)- Yarn A: Knit.

Row 2- Yarn B: Knit.

Row 3- Yarn B: Knit.

Row 4- Yarn C: Knit.

Row 5- Yarn C: K1, P1, (yo, P2tog) 27 times, K1.

Row 6- Yarn C: Knit.

Row 7- Yarn C: Knit.

Row 8- Yarn D: Knit.

Row 9- Yarn D: Purl.

Row 10- Yarn D: Knit.

Row 11- Yarn D: Purl.

Row 12- Yarn E: Knit.

Row 13- Yarn E: Knit.

Row 14- Yarn E: Knit.

Cast off knitwise on **WS**.

Fold purse in half and join side seam.

Sew seam at bottom edge by using running stitch worked on the RS just above fringe ends.

Secure and trim fringe.

Make 2 x twisted cords, each approximately 30.5 cm (**12 in**) long.

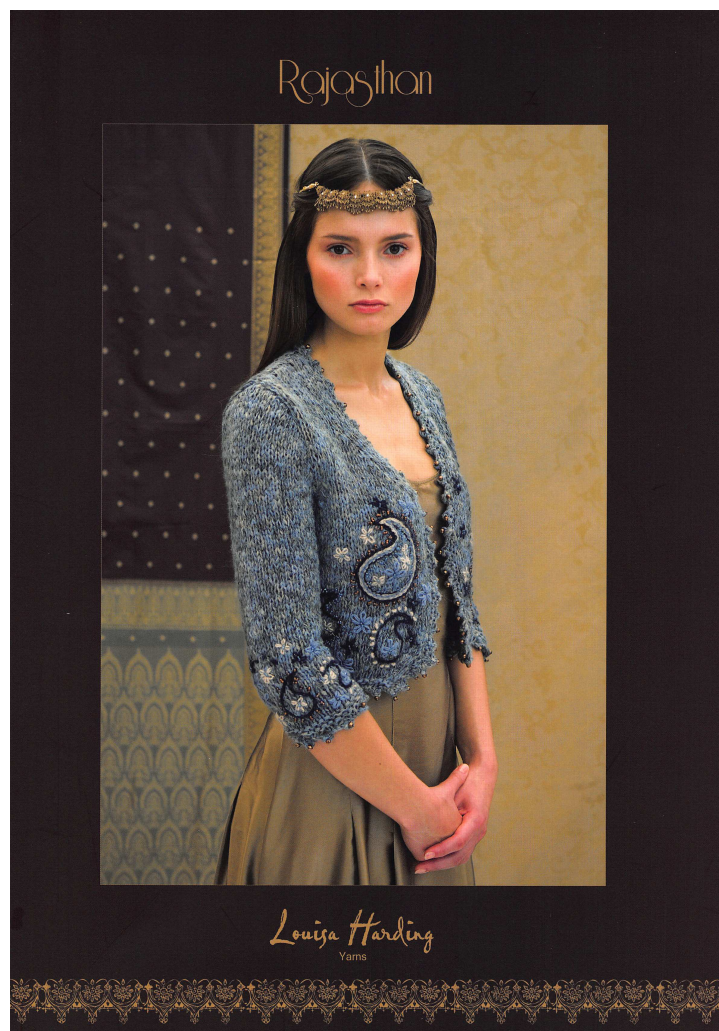
Twisted cord is made as follows: Cut 4 x 3 metre (**10 feet**) lengths of yarn. Knot the strands together at each end. Attach one end to a hook or door handle, insert a knitting needle through the other end. Twist the needle - the tighter the twisting, the firmer the finished cord will be. Hold the cord in the centre with one hand (you may need some help); bring both ends of cord together, allowing the two halves to twist together. Keep the cord straight and avoid tangling. Knot the cut ends together and trim. Starting at opposite sides of Bag, thread cords in and out of eyelet holes around top of Bag and knot ends, leaving long lengths as tassels.

Thread beads onto tassels as illustrated in the photograph.



Monsoon

is from



[#018 - Rajasthan](#)

by Louisa Harding



Design Credit: Louisa Harding
Photography Credit: Stephen Jessup

All Knitting Fever publications are intended for personal use only. Knitting Fever, Inc. (KFI) does not guarantee the final result. Measurements, gauge, etc. are included as a guideline. If you have any questions about this project, please contact us at knittingfever.com.

Copyright © 2014 Knitting Fever, Inc. Copy or duplication for resale is strictly prohibited.