

# *Indulgence Brushed Merino*



**KFI** | LUXURY  
COLLECTION

## SIZE

One size: Medium.

## MATERIALS

3 x 100g skeins of KFI Luxury Collection *Indulgence Brushed Merino* color 03 Taj Mahal.

Size US 11 or 7mm knitting needles.

Size US 13 (9mm) knitting needles.

## GAUGE

12 sts and 12 rows to 4 in (10 cm) measured over Stockinette stitch using US 13 (9 mm) needles.

## ABBREVIATIONS

**cm** centimetres; **g** grams; **in** inch(es); **K** knit; **k2tog** knit two stitches together; **mm** millimeters; **rep** repeat; **SKP** slip 1, knit 1, pass slipped stitch over; **st(s)** stitch(es) **yo** yarn over.

## INSTRUCTIONS

This garment is worked starting from the neck to the hem.

## FRONT

With US 13 (9mm) needles cast on 59 stitches, work 4 rows in garter st, then work in lace st following the chart. Once the chart has been worked, work in Stockinette st for the next 24 in (60 cm.)

With 7 mm needles work in 1x1 Rib for the next ½ in (4 cm.)  
Cast off all stitches.

## BACK

Work same as front.

## SLEEVES

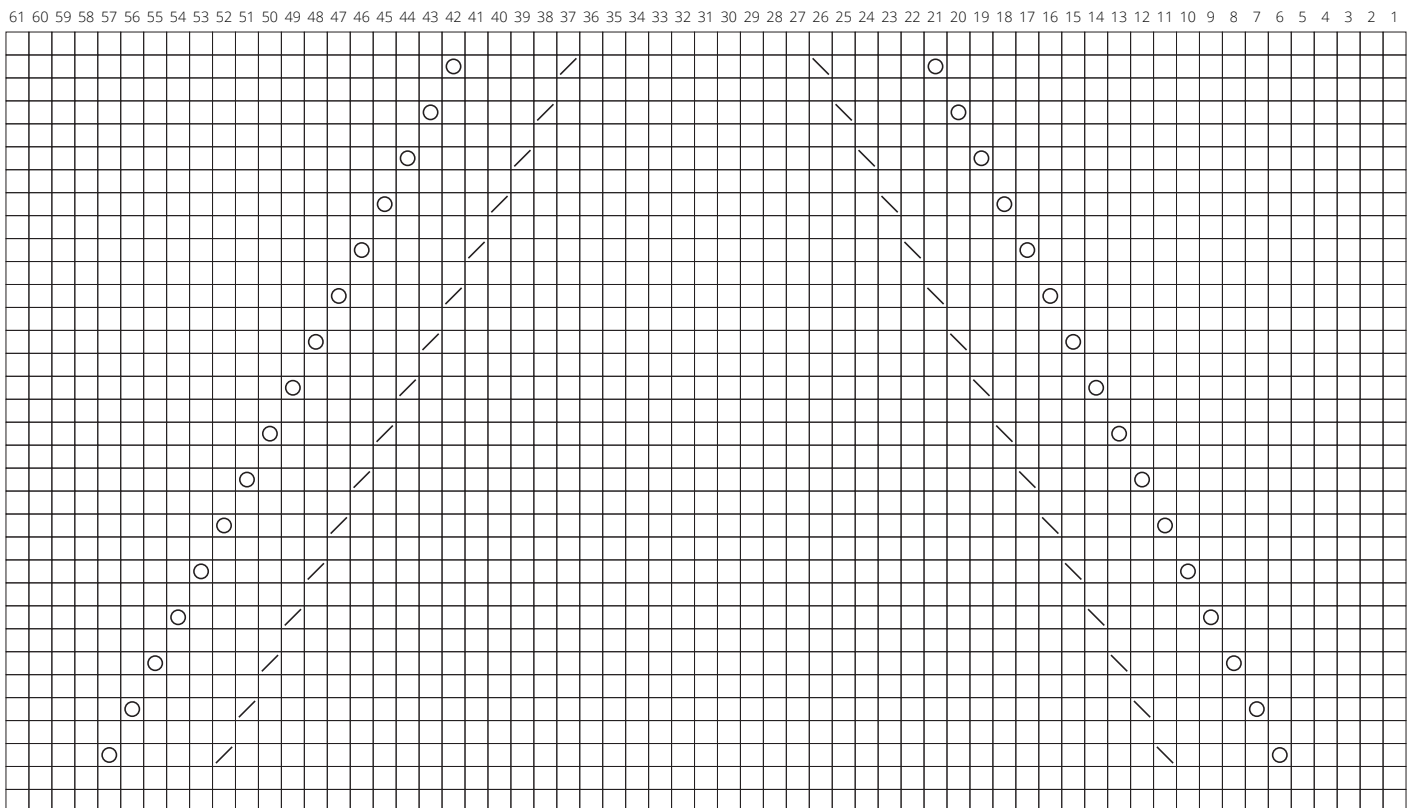
With 9 mm needles cast on 45 stitches starting with the color Light Grey. Decrease 1 stitch on both sides (after the first 2 stitches of the needle and before the last 2 stitches of needle), every 6 rows.

When the piece measures 14 in (36 cm) switch to US 11 or 7mm needles and work 4 rows in 1x1 Rib.

Work 2nd sleeve starting with color Dark Grey and finishing with color Black.

## FINISHING

Sew the shoulders, the sleeves and the sides of the sweater.  
Weave in ends.



Key    yo    k2tog    SKP