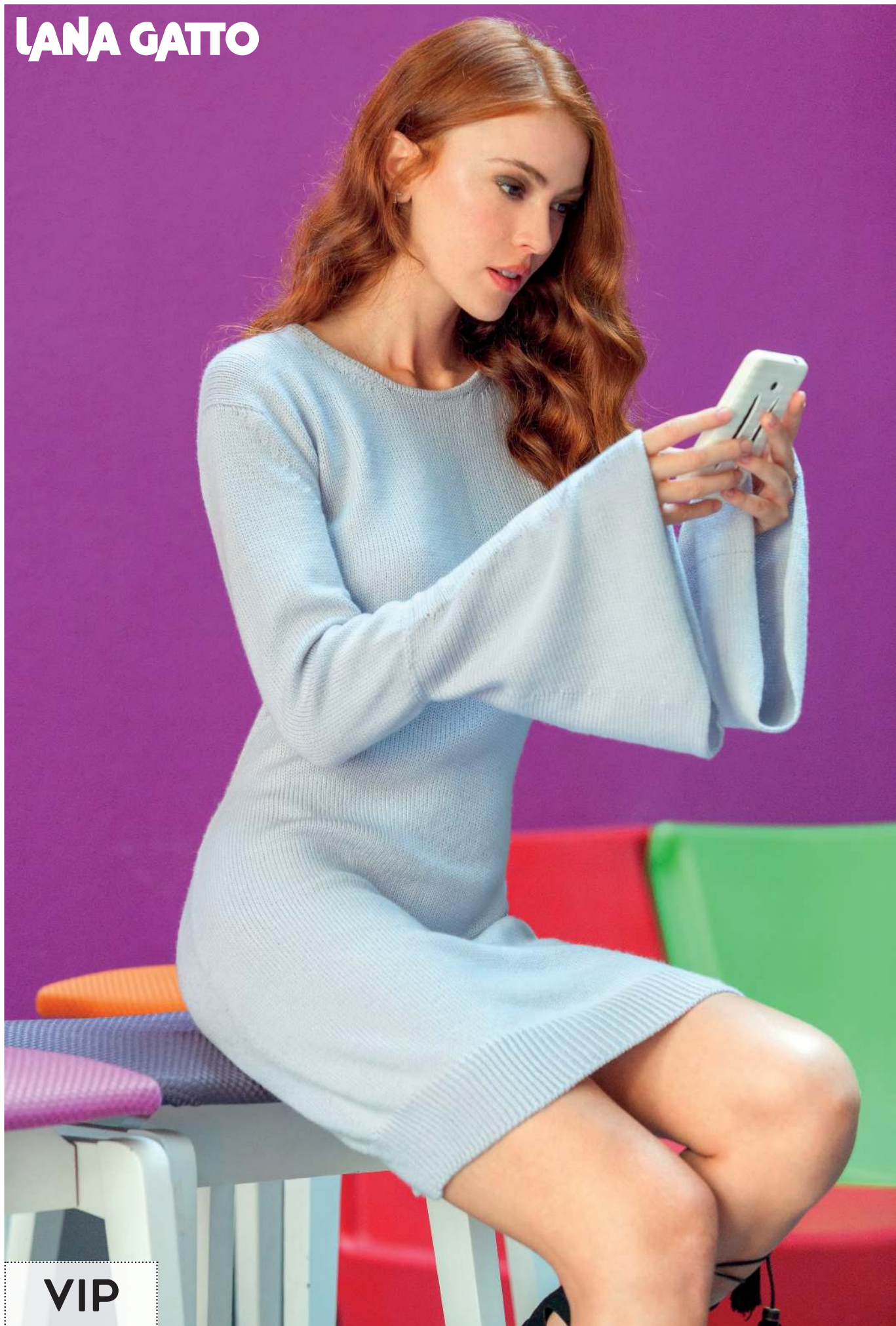


LANA GATTO



VIP

BELL SLEEVE DRESS

LANA GATTO

Size: 12 (16)

NOTE: figures in brackets () refer to larger size. Where only one figure is given this refers to both sizes.

Skill Level: intermediate

How much yarn:

g 500 (600) of Vip yarn, in pearl grey shade n. 12504

A small amount of scrap yarn

Needles: Pair of 3.00 mm (no. 11) knitting needles

A 3.00 mm (no. 11) circular needle

Pair of 4.00 mm (no. 8) knitting needles

A 4.00 mm (no. 8) double-pointed (Dp) needle

Crochet hook: A 3.00 mm (no. 11) crochet hook

Sewing needle: Yarn needle with rounded point

Other items: 3 stitch holders

STITCHES

Using needles: tubular stitch - stocking stitch (st st)
K1, P1 rib.

Using crochet hook: chain stitch

TENSION

26 sts and 34 rows measure 10 cm square over st st with 4.00 mm (no. 8) needles.

INSTRUCTIONS

Back: with 3.00 mm (no. 11) needles cast on 144 (154) sts. Work 4 rows in tubular and cm 7 (8) in K1, P1 rib. Change to 4.00 mm (no. 8) needles and work in st st, dec 1 st on each end, inside 3 sts, on 1st row (RS) and every 10th row 12 times, then every 8th row 4 times: 112 (122) sts remain. When piece measures cm 45 (47) from ribbed border, inc 1 st on each end, inside 3 sts, every 4th row twice and every 6th row 10 times: there are 136 (146) sts. When piece measures cm 65 (67) from ribbed border, shape armholes. Cast off 2 sts at beg of next 2 rows, then dec 2 sts at each end, inside 4 sts, every other row 3 times and every 4th row 3 times. For decreasing 2 sts at beg of row, K3 tog. For decreasing 2 sts at end of row, SK2P (= slip 1 st, knit 2 sts together, pass slipped st over K2 tog). 108 (118) sts remain. When armhole measures cm 20 (21) cm, shape shoulders as follows: **Next row (RS):** K until to last 7 sts, turn without working rem sts.

Next row (WS): slip first st from left to right needle, P to last 7 sts, turn without working rem sts.

Next row: slip first st from left to right needle, K to last 7 (8) sts, turn without working rem sts.

Next row: slip first st from left to right needle, P to last 7 (8) sts, turn without working rem sts. Rep last 2 rows twice more. There are on the needle the centre 52 (56) sts for neck.

Next row (RS): K the centre 52 (56) sts, K the 28 (31) sts of a shoulder.

Next row (WS): P 80 (87), P the 28 (31) sts of other shoulder. Leave all sts on a Dp needle.

Front: work as Back until armhole measures cm 12. There are 108 (118) sts. Shape neck as follows:

Next row (RS): K36 (41), SK2P, K3, leave centre 24 sts on a stitch-holder, join another ball of same yarn, K3, K3tog, K36 (41). Cont separately at the same time on each side dec 2 sts on neck edge, as before, inside 3 sts, every alternate row 3 (4) times more, then every 4th row 3 times: 28 (31) sts remain on each shoulder. Shape shoulders as made for Back and at the same height: on armhole edge omit to work on alternate row 7 sts once and 7 (8) sts 3 times. Then work 2 rows in st st on the 28 (31) sts of each shoulder and leave these sts on a stitch-holder (a stitch-holder for each shoulder).

Sleeve: commence to work Flared Part. With 4.00 mm (no. 8) needles and a scrap yarn cast on 66 (72) sts. Change yarn and continue to work using Vip yarn. Work 16 (18) rows in st st, * cont in st st, as follows: work 2 rows (forward and backward) only on first 6 sts, only on first 12 sts, only on first 18 sts and 6 more sts every alternate row, until are worked all 66 (72) sts (= short rows), then work 34 (36) rows on all 66 (72) sts; rep from * once more, then work short rows as before and 16 (18) rows on all 66 (72) sts. Cast off all sts using a scrap yarn. For sleeve, with 4.00 mm (no. 8) needles pick up and K 80 (86) sts along shorter vertical side of Flared Part: this row is the bottom edge of proper Sleeve. Starting with a purl a row (WS), work in st st inc 1 st on each end, inside 3 sts, on next and every 28th (14th) row twice (4 times) more. There are 86 (96) sts. When Sleeve measures cm 25 (27) from bottom edge, for sleeve top cast off 2 sts at beg of next 2 rows, then dec 2 sts on each end, inside 4 sts, every alternate row once (3 times) and every 4th row 11 times. When Sleeve measures cm 15 (16) from sleeve top, cast off rem 34 (36) sts.

Neck border: using yarn needle join in kitchener st the 28 (31) sts on right shoulder of Front (left on a stitch-holder) to corresponding 28 (31) sts on right shoulder of Back (left on a Dp-needle). Make the same for left shoulder. Using 3.00 mm (no. 11) circular needle, K the 52 (56) sts of Back neck, pick up and K 26 (30) sts down left side of Front neck edge, K the 24 sts on a stitch-holder at centre of Front neck, pick up and K 26 (30) sts up right side of Front neck edge: there are 128 (140) sts. Work 10 rounds in st st (all rounds K). Turn half border on WS

BELL SLEEVE DRESS

LANA GATTO

and, using yarn needle, sew the 128 (140) sts on needle in backstitch at the base of border, dropping each st from needle for each sewing stitch.

FINISHING

Unravel scrap yarns from cast-on and cast-off sts of Flared Part of each Sleeve and, with yarn needle and Vip yarn, sew corresponding sts in kitchener st. Set in sleeves

in position. Sew side and sleeve seams. Using 3.00 mm (no. 11) crochet hook work 2 rounds in chain st all around joining between flared part and bottom edge of each sleeve, as follows: bring yarn on WS, insert hook from RS to back, take yarn and draw a loop on front, * miss 2 sts and insert hook from front to back into next st, take yarn and draw a loop on front, draw loop through the loop on hook; rep from * to end. Work another round as previous. Fasten off.

