



S05

KATIA

AMIGURUMI

100% COTTON

AMIGURUMI SCARF 100% COTTON

MATERIALS

AMIGURUMI 100% COTTON: 1 bag col. S05

Knitting needles: size 7 (U.S.)/(4.5 mm)

Stitches

Stockinette st, reverse stockinette st, garter st (see basic instructions in our magazines or www.katia.com)

Pattern st (see graph A)

Stripe st: (follow the colour and stitch order)

- Salmon in *stockinette st*
- Mustard in *reverse stockinette st*
- Light brown in *stockinette st*
- Green in *reverse stockinette st*
- Water green in *stockinette st*
- Cream in *reverse stockinette st*
- Navy blue in *stockinette st*
- Grey in *reverse stockinette st*
- Dark brown in *stockinette st*
- Red in *reverse stockinette st*

GAUGE

The measurements are taken without blocking (pressing) the sample swatch

Using size 7 needles in *stockinette st*:

18 sts & 24 rows = 4x4"

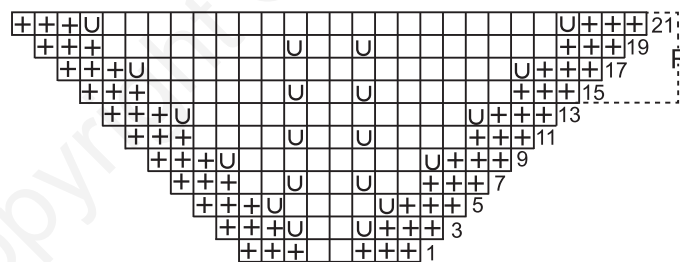
INSTRUCTIONS

Using salmon **cast on** 8 sts. Work in *stripe st* and *pattern st* following graph A.

From the 3rd row **increase** on every right side row, as indicated on the graph, **changing** the colour and the stitch at the end of each ball of yarn. When all the balls of yarn are finished, **bind (cast off)** all the sts.

Note: AMIGURUMI 100% COTTON is available in 3 more different colour assortments, chose the one you like best.

Graph A



On alternate rows work all sts and YO's as they present themselves

R- Repeat

work this st following the stripe st

+ 1 garter st

U 1 YO