

Katitica

AMIGURUMI

100% COTTON



S01

S02

S03

S04



S01

AMIGURUMI 100% COTTON SCARVES

MATERIALS

AMIGURUMI 100% COTTON: 1 bag for each scarf: colours S01, S02, S03 & S04

Crochet hook: E4 (U.S.)/(3.5 mm)

Stitches

Chain st, triple crochet (see basic instructions in our magazines or www.katia.com)

Pattern st (see graph A)

Stripe st (see explanation)

Stripe st (follow the colour order)

Scarf 1 col. S01:

Pink
Yellow
Pale lilac
White
Water green
Blue
Light salmon
Sky blue
Grey
Light beige

Scarf 2 col. S02:

Red
Green
Fuchsia
Blue
Dark lilac
Black
Light brown
Orange
Dark brown
Yellow

Scarf 3 col. S03:

Lime
Green
Blue
Dark pink
Water green
Light pink
Light orange
Dark orange
Grey
Beige

Scarf 4 col. S04:

Dark orange
Burnt orange
Dark green
Marine blue
Grey
White
Red

Light green

Blue

Salmon

GAUGE

The measurements are taken without blocking (pressing) the sample swatch

Using size E4 hook in *pattern st*:

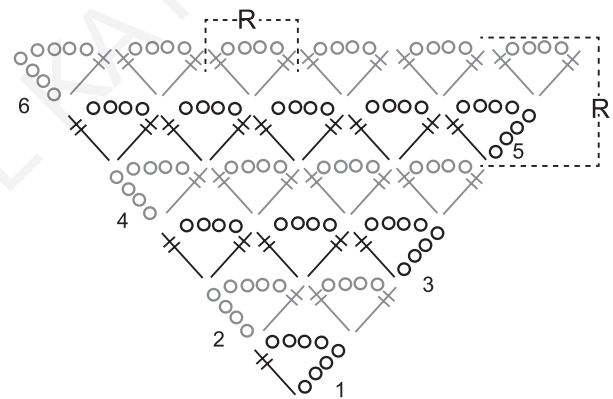
5 motifs & 6 rows = 4x4"

INSTRUCTIONS

Using the first colour **chain** 4 sts and cont working in *pattern st* following graph A, and in *stripe st*, **changing** colour when the ball of yarn is finished

When all the balls of yarn have been used, **cut** yarn and **fasten off**.

Graph A



R- Repeat

○ 1 chain st

⊕ 1 triple crochet