

**KATIA**®

[www.katia.com](http://www.katia.com)

AIR LUX



**SIZE:** -a) 40 1/8" -b) 44 1/8" -c) 47 1/4" -d) 51 1/8" finished bust measurement

**UK Sizes:** -a) 8-10 -b) 12-14 -c) 16-18 -d) 20-22

**The model in photograph corresponds to size -a) 8-10**

## MATERIALS

AIR LUX: -a) 2 -b) 2 -c) 3 -d) 3 balls in color no. 60 light grey  
-a) 1 -b) 2 -c) 2 -d) 2 balls in color no. 61 dark grey

## Knitting needles

Size 6 and 8 (US)/  
(4 and 5mm)

## Stitches

2x2 Ribbing (see Basic stitches)  
Stockinette St (see Basic stitches)  
Diamond Pattern St (see Graph A)

## GAUGE

With smaller needles in *Diamond Pattern*:  
17 sts and 26 rows = 4x4": **after** blocking

## BACK

Using dark grey with larger needles, **cast on** -a) 77 -b) 85 -c) 91 -d) 101 sts

**Change** to smaller needles and beginning and ending with -a) K2/P3 -b) K2/P3 -c) K2/K3 -d) K2/P3, work in 2x2 Ribbing for 1 1/4" (3cm); then following Graph A for *Diamond Pattern St*, **set up** pattern as follows:

-a) 77 sts in *Diamond Pattern St*

-b) 4 *Stockinette Sts*, 77 sts in *Diamond Pattern St*, 4 *Stockinette Sts*

-c) 1 *Stockinette St*, 89 sts in *Diamond Pattern St*, 1 *Stockinette St*

-d) 101 sts in *Diamond Pattern St*

When back measures 4" (10cm), **increase** 5 sts at each edge, and work increased sts in *Stockinette St*: [-a) 87 -b) 95 -c) 101 -d) 111 sts]

When back measures 13 3/8" (34cm), **change** to light grey and continue in established pattern.

When back measures -a) 24" (61cm) -b) 24 3/8" (62cm) -c) 24 3/4" (63cm) -d) 25 1/4" (64cm); **bind/cast off**.

## FRONT

Work same as back until front measures -a) 21 5/8" (55cm) -b) 22" (56cm) -c) 22 1/2" (57cm) -d) 22 7/8" (58cm)

## Neckline:

On next right side row, **bind/cast off** center -a) 17 -b) 19 -c) 21 -d) 23 sts. Working each side separately, **bind/cast off** at neck edge every 2 rows: 5 sts 1 time; 4 sts 1 time; 3 sts 1 time: [-a) 23 -b) 26 -c) 28 -d) 32 sts]

## Shoulder:

When front measures -a) 24" (61cm) -b) 24 3/8" (62cm) -c) 24 3/4" (63cm) -d) 25 1/4" (64cm); **bind/cast off** all remaining sts. Work other side the same, **reversing** all shaping.

## SLEEVES

Using dark grey with larger needles, **cast on** -a) 41 -b) 43 -c) 47 -d) 51 sts.

**Change** to smaller needles and beginning and ending with -a) K2/P3 -b) K2/K3 -c) K2/K3 -d) K2/P3, work in 2x2 Ribbing for 1 1/4" (3cm); then following Graph A for *Diamond Pattern St*, **set up** pattern as follows:

-a) 6 *Stockinette Sts*, 29 sts in *Diamond Pattern St*, 6 *Stockinette Sts*

-b) 7 *Stockinette Sts*, 29 sts in *Diamond Pattern St*, 7 *Stockinette Sts*

-c) 9 *Stockinette Sts*, 29 sts in *Diamond Pattern St*, 9 *Stockinette Sts*

-d) 5 *Stockinette Sts*, 41 sts in *Diamond Pattern St*, 5 *Stockinette Sts*

## AND AT THE SAME TIME:

**Increase** 1 st at each edge, every 6 rows: 19 times:

[-a) 79 -b) 81 -c) 85 -d) 89 sts]

**Note:** Work increased sts in *Stockinette St*.

When sleeve measures -a) 19 3/4" (50cm) -b) 20 1/8" (51cm) -c) 20 1/2" (52cm) -d) 20 7/8" (53cm), **bind/cast off** all sts.

Work 2<sup>nd</sup> sleeve the same.

## FINISHING (MAKING UP)

**Sew** all the seams of garment using *Side Seams* (see Basic Stitches).

**Sew** right shoulder seam.

## Collar:

Using light grey with smaller needles, **pick up** and knit -a) 108 -b) 112 -c) 116 -d) 120 sts around neck edge.

Beginning and ending with K2/P2 for all sizes, work in 2x2 Ribbing for 1 1/4" (3cm); **bind/cast off**.

**Sew** left shoulder and collar seam.

## Side slits edging of front:

Using dark grey with smaller needles, **pick up** and knit 18 sts at each edge of front, from to lower edge to increased 5 sts (= 4"/10cm) Beginning and ending with K2, work in 2x2 Ribbing for 1 1/4" (3cm); **bind/cast off**.

## Side slits edging of back:

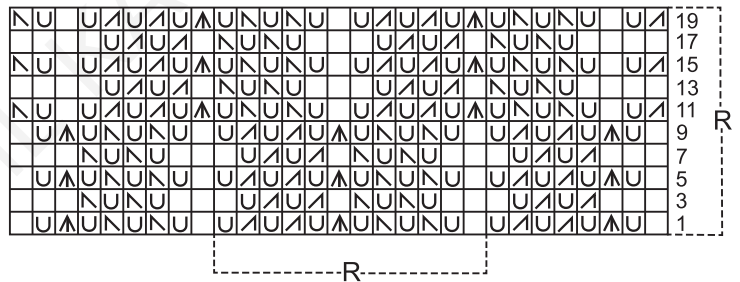
Work same as front.

Place markers on back and fronts -a) 7 1/8" (18cm) -b) 7 1/2" (19cm) -c) 7 7/8" (20cm) -d) 8 1/4" (21cm), down from shoulder seam on each side for armhole. Matching center of sleeve with shoulder seam; **set** in sleeves between markers

Lay garment open on a flat surface; carefully **block** all seams on the wrong side, using steam only.

**Sew** side and sleeve seams.

## Graph A



On alternate rows, purl all sts including yarn overs.

R- Repeat

□ Knit

U YO

∧ K2tog.

N sl 1, K1, PSSO

▲ sl 1, K2tog, PSSO

