

100



101



102



103



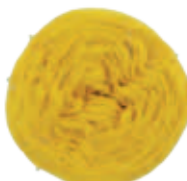
104



105



106



107



108



SUNSET SHAWL

MEASUREMENTS: 65" (165 cm) wide x 27 1/2" (70 cm) long, approx

MATERIALS

SUNSET: 1 ball col. 106

Crochet hook: E4 (U.S.)/(3.5 mm)

Stitches

Magic ring, chain st, double crochet, triple

crochet, single crochet: (see basic instructions in our magazines or www.katia.com)

Pattern st: (see graph A)

GAUGE

Using size E4 crochet hook in *pattern st*:

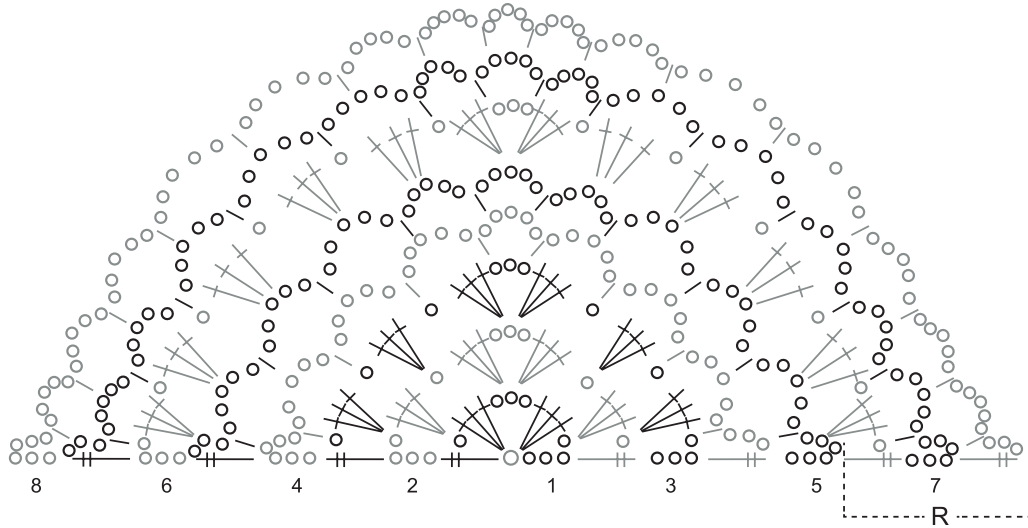
4 1/2 motifs and 8 rows = 4x4"

INSTRUCTIONS

Make a *magic ring* and continue working in *pattern st* following graph A.

Use the whole ball of yarn then **cut** the yarn and **fasten off**.

GRAPH A



R Repeat

o 1 chain st

l 1 single crochet

† 1 double crochet

≡ 1 triple crochet



SUNSET SHAWL

MEASUREMENTS: 19 5/8" (50 cm) wide x 37 3/4" (96 cm) long, **approx**

MATERIALS

SUNSET: 1 ball col. 105

Knitting needles: size 7 (U.S.)/(4.5 mm)

Stitches

Garter st: knit all sts and all rows

Pattern st: (see graph A)

GAUGE

Using size 7 needles in *pattern st*:

20 sts & 20 rows = 4x4"

INSTRUCTIONS

Cast on 103 sts and work in *garter st*.

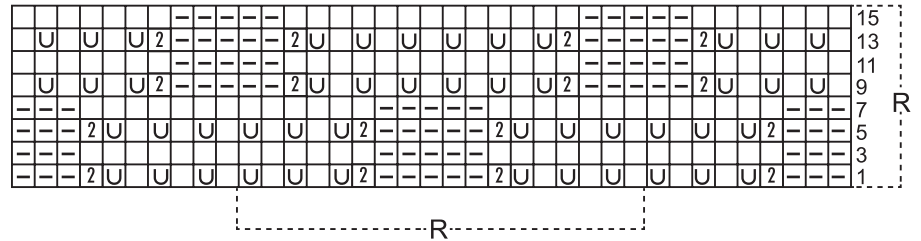
When shawl measures 1 1/8" (3 cm) measuring from the start, continue working in *pattern st* following graph A, **except** for the first and last 6 sts which are worked in *garter st*.

When shawl measures 36 5/8" (93 cm) measuring from the start, continue working 1 1/8" (3 cm) in *garter st* then **bind (cast off)** all the sts.

FINISHING (MAKING UP)

Fold the shawl in half and block (press) with maximum **steam**, taking care not to mark the fold.

GRAPH A



On alternate rows work all sts as they present themselves and purl the YO's.

R Repeat

- 1 purl st

□ 1 knit st

2 2 sts tog 2 times, and slip 1 st over the other

U 1 YO

