





# Katia

## BABY PAINT

2  = 



1  = 



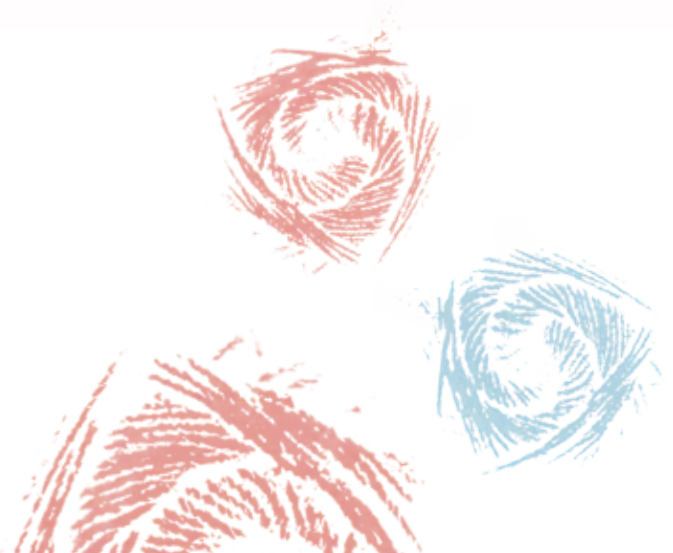
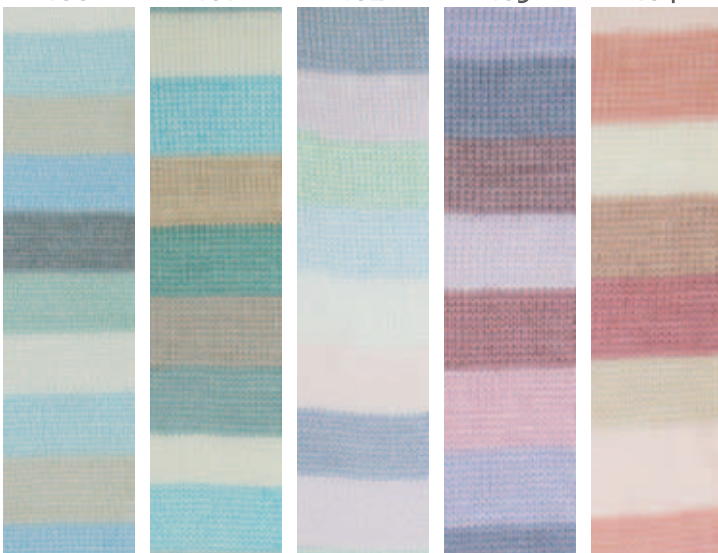
100

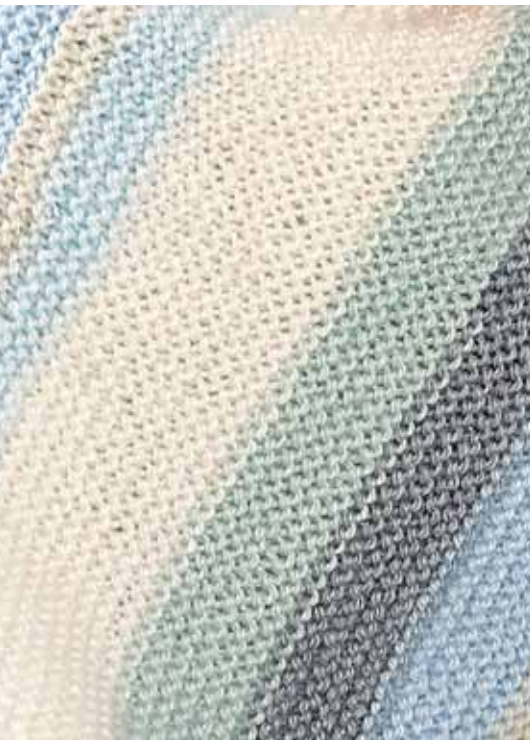
101

102

103

104





### BABY PAINT PONCHO

#### MATERIALS

BABY PAINT: 1 ball col. 100

**Knitting needles:** size 4 (U.S.)/(3.5 mm)

#### Stitches

**Garter st:** work all stitches and all rows in knit st

#### GAUGE

Using size 4 needles in *garter st*:  
23 sts & 44 rows = 4x4"

#### INSTRUCTIONS

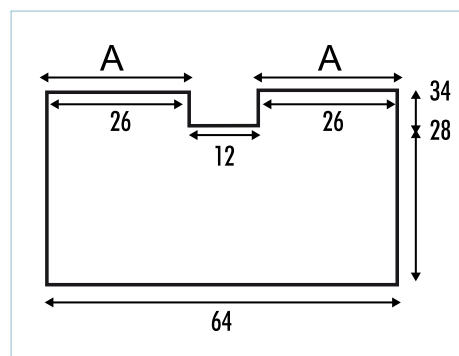
**Cast on** 148 sts and work in *garter st*.

**Neckline:** When poncho measures 11" (28 cm) measuring from the start, **bind (cast off)** the central 28 sts and continue working each side separately.

**Shoulder:** At a distance of 2 3/8" (6 cm) measuring from the start of the neckline shaping, **bind (cast off)** all the sts. Finish the other side the same.

#### FINISHING (MAKING UP)

Match the letter A with A as shown on the pattern and **sew**.



### BABY PAINT BLANKET

**MEASUREMENTS:** 22" (56 cm) wide x 35 3/8" (90 cm) long, approx

#### MATERIALS

BABY PAINT: 2 balls col. 103

**Knitting needles:** size 7 (U.S.)/(4.5 mm)

#### Stitches

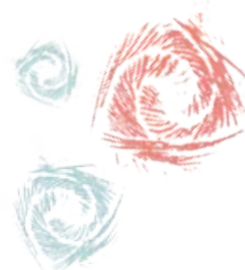
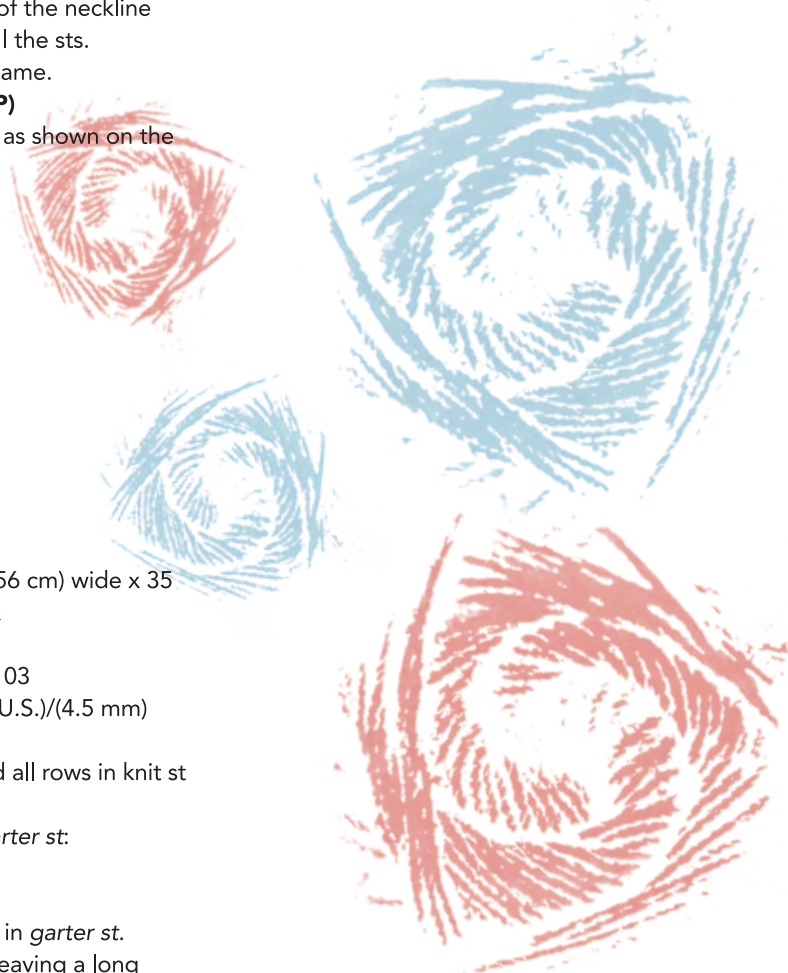
**Garter st:** work all sts and all rows in knit st

#### GAUGE

Using size 7 needles in *garter st*:  
21 sts & 40 rows = 4x4"

#### INSTRUCTIONS

**Cast on** 115 sts and work in *garter st*. Work the 2 balls of yarn, leaving a long length at the end of the 2<sup>nd</sup> ball to loosely **bind (cast off)** all the sts.



[www.katia.com](http://www.katia.com)