

# Queensland COLLECTION



KAKADUSTRETCHY KNIT CAP



## materials

- 100g of Queensland Collection **Kakadu** shade #01 Midnight.
- 50g of Mirasol **Nuna** shade #1050 Timberwolf.
- US 9/5.5mm 1 6in circular and double-pointed needles.
- 1 stitch marker for end of round.

## gauge

14sts per 4in/10cm in pattern with yarn doubled.  
Adjust needle size to obtain proper gauge.

## abbreviations

<b>cdd</b>	central double decrease	<b>pm</b>	place marker
	sl 2 knitwise tog, k1, sl 2	<b>sl</b>	slip
	slipped sts over	<b>sm</b>	slip marker
<b>dec</b>	decrease(ing)	<b>st</b>	stitch
<b>k</b>	knit	<b>tog</b>	together
<b>p</b>	purl		

## acknowledgements

Garment design & photography by **Nancy Nagle** for **Nangellini Designs**.

**T**his fun hat is a great gender neutral bulky knit and the fun stitch pattern makes it extra stretch to fit many heads! It is worked with both yarns held doubled throughout. Wind the Kakadu and Nuna together into a center-pull ball and work with both ends, using with the inside and the outside ends of the yarn simultaneously. Be mindful that you catch all the strands as you knit.

## instructions

### CAST ON

Loosely cast on 72 sts, PM, join to work in the round on first row.

### HAT BODY

**Round 1:** (k, p) repeat around.

**Round 2:** k2, p3, (k3, p3) around to last st, k1.

Repeat rounds 1 and 2 for approximately 7ins.

### DECREASING TOP OF HAT

**Dec Round 1:** (k1, p1, k1, p1, k1, cdd, k1, p1, k1, p1) repeat around.

**Dec Round 2:** (k2, p3, k1, p3, k1) repeat around.

**Dec Round 3:** (k1, p1, k1, p1, cdd, p1, k1, p1) repeat around.

**Dec Round 4:** (k2, p2, k1, p2, k1) repeat around.

**Dec Round 5:** (k1, p1, k1, cdd, k1, p1) repeat around.

**Dec Round 6:** (k2, p1, k1, p1, k1) repeat around.

**Dec Round 7:** (k1, p1, cdd, p1) repeat around.

**Dec Round 8:** k every st around.

**Dec Round 9:** (k1, cdd) repeat around.

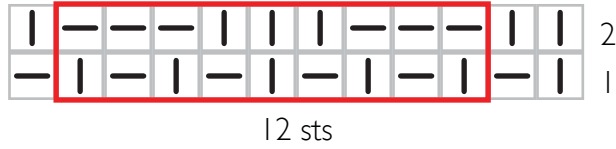
### FINISHING

Cut yarn and thread darning needle. Thread through all remaining stitches, back through first two stitches and down through the center to inside of hat. Weave tail into inside of hat.

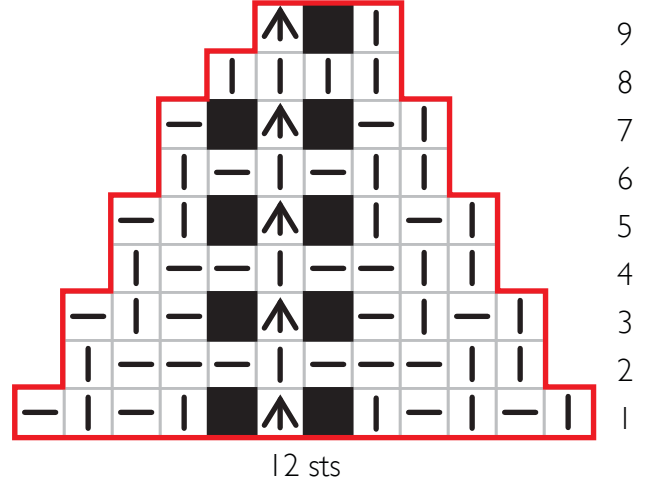
Weave in all tails securely. **Q**



Body Chart



Decreasing Chart



Key



knit



purl



cdd (central double decrease)